

Esso Exploration & Production Chad Inc.

Land Use Mitigation Action Plan

**Annual Individual Livelihood Restoration Report
2007**

31 January 2008

Executive Summary

Since mid-2006 the Environmental Management Plan's (EMP) Geographic Information System (GIS) and Socioeconomics groups have developed a number of survey tools designed to provide reliable data for future land acquisition and to review and filter out low quality data already in the Compensation Database. These tools are used to monitor and evaluate the impact of past land acquisition on inhabitants of the Oil Field Development (OFDA).

The EMP Department achieved a step change in identifying At-Risk Households through the use of Village Land Survey Teams and Fast Track Mitigation Team Surveys. These teams along with the Land Use Mitigation Action Plan (LUMAP) Advisor (anthropologist/sociologist/economist) analyze this data to determine actual impacts on households and villages.

These surveys are to be carried out in all seven (7) of the villages currently categorized as severely impacted. One village (Dokaidilti) has been completed and two more are well on their way (Ngalaba and Dildo). The same survey tools and questionnaires are also being applied to "Fast-Tracked" individuals who appear to be At-Risk in the EMP Compensation Database. The Fast Track Mitigation Survey Team is gathering data to determine their actual status and implement corrective actions as appropriate. The survey targets have been expanded to include people still surrendering land for Project needs, again in order to identify their potential risk.

The Village Land Surveys (GIS mapping of fields and in depth socioeconomic questionnaires) provide much more accurate data than was available from the previously used Compensation Questionnaires (declarative by land user).

For example, Dokaidilti:

	At Risk HH	At Risk HHM
Compensation Database (Declarative)	185	843
Village Land Survey (Real Land)	13	110
Fast Track Mitigation Survey Check on Cadastral Data (Real Land + Real Income)	2	14

HH Household

HHM Household Member

This comparison clearly illustrates the value of these tools. It is reasonable to expect similar data and results at the other severe and watch list villages.

1. Purpose

A critical task for the Land Use Mitigation Action Plan (LUMAP) is to identify households and individuals currently put "At Risk" by Chad Export Project land take, to assess how to rectify the situation, and then, to implement corrective measures that will mitigate their situation. The LUMAP team is also developing improved work processes for the EMP Department to use to identify potential at risk households, verify actual status and implement steps to restore livelihood or minimize impact in a timely manner using the EMP principles and procedures.

Action Area 1 of the Plan addresses "Identification & Assessment" by proposing to "Use various tools such as the project's Geographic Information System (GIS) and field surveys to identify current and future project impacts at the village and individual land user level. The information from the identification and assessment process will then be used in other action areas to mitigate current conditions and to minimize future impacts. The Identification and Assessment systems make it possible for the Project to apply the Environmental Management Plan in a more forward looking manner, assess cumulative land use impacts (total impacts over time) and predict areas of high potential land use impact."

Thus the GIS and survey tools developed to identify people already At-Risk must also be effective in identifying future situations when project impact is approaching the point at which people will be put at risk and facilitate timely implementation of EMP principles and procedures to minimize impact and/or livelihood restoration.

The purpose of the LUMAP's Annual Individual Report is to provide information on the number of people currently at risk because of past project impacts and to convey the corrective actions that are in place or have been completed to resolve their situation. The efficacy of the LUMAP tools going forward will be demonstrated by this annual reporting on the numbers of individuals / households whose situations have been resolved/improved or not further aggravated by the Project over the past year.

2. Database Issues Associated with Identifying People At Risk

2.1. Pre 2007 Individual Red Flag Process

Early in 2007, a Red Flag Function was introduced into the EMP Information System (EMPIS). The Red Flag Function used declared data collected through the existing Compensation Process and included in the existing database. The EMPIS now automatically identifies ("Red Flagged") the individuals e.g. resettlement factor less than 2/3 corde per household member (HHM) potentially eligible for resettlement. This Function was used to rapidly prioritize the livelihood restoration roster to target those with the least land. The following figure is a snapshot of the view used to identify Red Flag individuals.

Figure 1 : View Used To Identify Red Flag Individuals

The screenshot displays the EEPCI - EMP Information System interface. The main window shows a list of individuals with columns for Village, ID, Nom, Age, Compensé, Dommage, Pr. Dossier, Pr. Corde, Pr. Dep., Der. Dossier, Der. Corde, Der. Dep., Moy. Corde, Moy. Dep., Sup. Comp., Fact. Avant, Fact. Après, and Enquête. A red flag is visible in the Fact. Après column for several individuals. A foreground window titled 'Dossiers de compensation de M. Ndoutangone, Ernest (ID13041)' is open, showing a table with 7 rows of compensation data. The table has columns for Nom Village, # de dossier, Date, Dépendant, Cordes, Sup. Comp., Somme Co., Total JP, Total NP, and Total P.

Village	ID	Nom	Age	Compensé	Dommage	Pr. Dossier	Pr. Corde	Pr. Dep.	Der. Dossier	Der. Corde	Der. Dep.	Moy. Corde	Moy. Dep.	Sup. Comp.	Fact. Avant	Fact. Après	Enquête
Dido	ID42	M. Ramdoub, Jules	38	2	0	1998-12-14	10.0	6	2007-03-23	2.0	10	6,000	8,000	2,437	1,667	0.044	
Mbanga I	ID1594	Mme. Lili, Mireille	35	2	0	2001-02-17	0	1	2007-07-25	3.0	9	1,500	5,000	0.167	0	0.315	
Miandoum	ID2162	M. Nodjimojo, Albert	31	2	0	2001-03-10	5.0	4	2007-06-27	0	6	2,500	5,000	0.948	1,250	0.130	
Moundou I	ID12148	M. Mbangolom, Dominique	50	9	4	2004-11-02	3.0	12	2007-05-31	8.0	15	6,000	13,444	7,088	0,250	0.060	
Bégona	ID12155	M. Lokarmbaye, Aron	35	6	1	2004-11-02	6.0	10	2007-02-09	1.0	11	4,833	8,833	1,350	0,600	-0.032	
Moundou I	ID13041	M. Ndoutangone, Ernest	51	7	1	2001-07-28	21.0	6	2007-08-12	1.0	10	6,000	6,428	2,193	3,500	-0.119	
Bégonelara	ID13046	Mme. Riamadjio, Luolene	51	6	0	2001-10-18	6.0	5	2007-05-08	3.0	4	3,667	6,000	1,740	1,200	0.222	
Ngalaba	ID13639	M. Bayam, Jean	32	6	1	2002-04-10	4.0	8	2007-06-27	2.0	10	2,833	7,500	1,104	0,500	-0.184	
Bégurakol	ID13649	M. Ndouba, Bienvenu	38	2	0	2002-12-23	16.0	10	2007-05-31	9.0	11	12,500	10,500	0,405	1,600	0.781	
Bégurakol	ID13650	M. Dingamto, Toussaint	21	6	0	2002-12-23	3.0	2	2007-06-18	5.0	3	4,167	2,167	1,829	1,500	1.024	
Bégurakol	ID13652	M. Madjimbaye, Elysée	24													0.676	
Bégonelara	ID13653	M. Mbaissasem, Elysée	23													0.536	
Bégurakol	ID13657	M. Mbaissasem, Richard	26													0.182	
Bégonelara	ID13664	Mme. Salar, Catherine	58													0.126	
Bégonelara	ID13668	M. Beisiam, Léon	31													0.537	
Bégonelara	ID13670	M. Bendjium, Valentin	25													0.939	
Bégonelara	ID13673	M. Mbaissasem, Alfred	26													0.259	
Bégonelara	ID13674	Mme. Lartondjio, Albertine	51													0.222	
Moundou I	ID13678	M. Ngannim, Gilbert	56													-0.184	
Bégurakol	ID13781	M. Kouarabaye, Eric	22													1.182	
Poutougum	ID13827	M. Yonsimong, Amane	35													0.945	
Poutougum	ID13828	M. Nandoum, Jean	61													0.182	
Poutougum	ID13829	M. Ndoubanain, Abraham	51													0.945	
Poutougum	ID13830	M. Neurdinam, Charles	39													0.186	

Nom Village	# de dossier	Date	Dépendant	Cordes	Sup. Comp.	Somme Co.	Total JP	Total NP	Total P
Kianga	IN08041	2001-10-18	6	21	0.301	0.301	4	1	
Moundou I	IN15779	2005-04-11	6	3	0.216	0.517	1	2	1
Moundou I	IN15817	2005-05-09	5	8	0.816	1.333	4	1	1
Moundou I	IN16119	2005-09-26	6	3	0.052	1.385			
Moundou I	IN16164	2005-09-26	6	3	0.026	1.411			
Moundou I	IN16184	2005-10-03	6	3	0.262	1.673			
Moundou I	IN16975	2007-03-12	10	1	0.521	2.194	7	1	2

Compensated individual (see a row in the background windows), summary and detail information is provided in order to explain the resettlement factor (red cells column). By selecting an individual (selecting a row), the foreground window provides detailed information about each compensation file (each file is a row) related to him/her in the database. The next table shows the same data displayed by the foreground windows.

Table 1: Chronological Land Take of an Individual.

Date	Dependent	Corde	Exact Land Take (Corde)	Cumulative Land Take
10/18/2001	6	21	0.301	0.301
4/11/2005	6	3	0.216	0.517
5/9/2005	5	8	0.816	1.333
9/26/2005	6	3	0.052	1.385
9/26/2005	6	3	0.026	1.411
10/3/2005	6	3	0.262	1.673
3/12/2007	10	1	0.521	2.194

This table demonstrates how the declarative data reliability (Dependent and Corde) is less than adequate. As presented, answers are not consistent over time. In this example, the individual started with 21 cordes for 6 dependents. Six years later, after a cumulative Land Take of 2.1 cordes, he declares that he has land use of only 1 corde.

The above example is not isolated. Similar examples have been observed in OFDA over the years. The Village Land Survey at Dokaidilti validated the anecdotal observations leading EEPCI to adopt the Cadastral land Survey Methodology (See section 3).

Nevertheless, the Red Flag Function has allowed us to classify individuals into two categories: Not Eligible and Potential Eligible. Individuals in the Potential Eligible category are targeted for an in-depth analysis using the Cadastre tools. The Red Flag Function produces the two categories as presented in the next table.

Table 2 : Number Of Individuals Compensated In 2007 By Village

Village	Individual compensated not eligible	Number of dependent	Red flagged Individual	Number of dependent
Abassana	2	8	2	22
Atan	0	0	1	12
Bayande	2	11	7	63
Béboro	1	9	0	0
Bedjondo	1	8	0	0
Bédobara	0	0	2	24
Bégada	25	147	28	273
Bégonlara	2	5	6	64
Béguirakol	14	60	6	45
Béla	28	135	26	261
Bémira	2	17	7	61
Bengonelara	4	10	19	143
Benguirakol	12	43	10	81
Béro	40	112	111	1051
Béti	0	0	1	15
Danmadja	1	1	14	113
Dildo	4	19	28	379
Doba	0	0	1	17
Dokaidilti	17	71	39	392
Guirkou	1	7	0	0
Kagroye II	8	56	7	71
Komé	2	41	7	108
Koutou Nian	6	35	13	93
Madanan				
Nadpeur	1	10	0	0
Madjo	5	17	17	172
Madjo-Doba	2	6	3	24
Maiïbo	0	0	1	9
Maikéri	25	80	54	476
Maiïkiro	1	3	5	33
Maimbaye	5	25	9	75
Mainani	3	18	2	22
Mainani	5	32	5	43
Mbanga	107	436	227	2232

Miandoum	4	34	15	161
Missimadji	3	19	8	99
Morkété	4	20	4	19
Mouarom	16	58	37	305
Moundouli I	8	25	26	273
Naikam	18	136	1	4
Ngalaba	36	132	76	674
Ngara	0	0	2	16
Poutouquem	24	98	73	700
Total	439	1945	907	8699

A total of 1346 individuals (the sum of columns 2 + 4) received compensation in 2007. The following column after the village indicates how many compensated individuals were not eligible for resettlement after compensation. The next column indicates the total number of declared dependents of those not eligible (Ex.: 2 individuals from Abassana were not eligible after compensation. These 2 individuals had a total of 8 dependents.).

The next column indicates how many compensated individuals were potentially eligible after compensation (e.g. Red Flag indicating that their responses to current land holdings minus the amount being compensated left them with < 2/3 c/HHM). Finally, the last column indicates the total number of declared dependents of those potentially eligible (i.e. the wider impact of the land take).

The total number of potential eligible individuals is 907 representing 8699 dependents.

The sum of both "Number of dependents" columns is about 10,600. By crosschecking this number with available demographic data, it seems that the computed value is too high. This is explained by the fact some respondents to compensation questions data mix up the concept of Land User and Head of Household (CdM), allowing a dependent to depend on two different individuals (ex: A husband is compensated and declares 8 dependents – 1 wife and 7 children. Later, his wife is compensated and declares 7 dependents – her 7 children. In this case two (2) individuals were compensated, however, 15 dependents declared – the dependents were double counted). This is a Compensation System issue that needed to be corrected.

In order to correct this system issue, the household concept needed to be defined and built into the database in order to get a more realistic and accurate picture of any given household situation and then accurate data analysis for larger numbers of households.

2.2. Household concept

Later in 2007 the Household concept was integrated to the EMPIS. With GIS mapping and household-wide surveys, the improved data allows us to gather individuals and their surveyed land into a Household, cutting down the redundancy problem described in section 1.1. For those individuals/households, it is then possible to compute the resettlement factor based on measured data rather than data declared by individuals.

By storing all Household survey results into the system, we now get a better picture of individuals and their dependents. The next figure illustrates the view used to analyze information on households as of now going forward.

Figure 2: View Used To Identify Red Flag Households

Column Descriptions:

- On F. = Last On farm Training
- Off F. = Last Farm Training
- C. File = Number of Compensation File
- C. Area = Total Compensated Area (Corde)
- F. Now = Number of field
- Area Now = Corde
- HHM Now = Total Household Member
- Factor Now = Resettlement Factor = Area Now / HHM Now

The hierarchical view (*Treeview*) on the left part of the windows presents a list of village with icons that indicate their classification. User selects a village (*Node*) and sees in the right part summary of information on households (e.g. series of rows, each row displaying a HH). All rows in red indicate that the resettlement factor is less than 2/3 corde per HHM (last column) and that whether the HH is "At-Risk" for lack of farmland needs further investigation.

When viewing a village node in the tree view (next figure) all household data are displayed in details.

Figure 3: View Used To Indicate Details About A Particular Household

Sommaire des données socio de Memndigngar, Ernest (ID20257).

Date	Contexte
2005-01-01	Fam Training, Promotion 4 (2005), Agriculture améliorée
2005-02-08	Document: Enquête Éligibilité
2005-02-08	Enquête par Socio-éco
2007-06-12	Enquête par Socio-éco

Sommaire de la compensation du ménage (Total corde compensée: 2.678).

Date	IN	Nom	M²	Corde
2001-07-14	IN03301	Memndigngar, Ernest	75	0.016
2003-01-03	IN04633	Memndigngar, Ernest	4017	0.797
2003-12-05	IN12711	Memndigngar, Ernest	1520	0.302
2004-10-18	IN13957	Memndigngar, Ernest	1912	0.379
2004-11-03	IN13994	Memndigngar, Ernest	2405	0.477
2007-06-06	IN27830	Lehoutem, Kaltouma	922	0.183
2007-06-06	IN27839	Djelassem, Adore	856	0.170
2007-06-18	IN27898	Lardene, Augustine	1131	0.224
2007-07-31	IN28107	Madjimbaye, Marie	42	0.008
2007-08-04	IN28114	Madjimbaye, Marie	187	0.037
2007-08-04	IN28115	Memndigngar, Ernest	434	0.086

After a household is selected, the *treeview* details the composition of the household (wife, children, and other dependents) while the right panel lists all compensation files and socioeconomic activities (surveys, resettlement) conducted with the given household. This view allows us to build the chronological sequence of all interventions (compensation, resettlement, etc) provided to a given household by EEPCI.

The household concept is a major improvement in the way to collect and analyze data. Started in mid-2007, the Village Land Survey pulls together all information on a household. By surveying all the households plus the way land is being used and infrastructures of a given village we can get an accurate picture of the situation and find out who are the **At Risk Households**. These are the households who, even when pooling all the land resources of its various members, have too many dependents and too little land. These households' living derived from agriculture will be very low and can be improved only by other ways of exploiting resources (e.g. fishing, sale of products from wild trees) or by the skills of its members (tailor, distiller of local brews) or the acquisition of additional land. It also allows us to compare declared data obtained through the Compensation System (used for Red Flag computation) with the measured data of the Village Land Survey. The following section presents this comparison.

3. Data Quality Improvement Through the Village Land Survey

Process

The Village Land Survey performed in 2007 in Dokaidilti is interesting because declared data and reality were compared and a true picture of the agricultural impact on this village was developed. The following table presents all individuals compensated (Red Flag or not) in Dokaidilti since the beginning of the project (computed on compensation data) in 1998.

Table 3: Compensated Dokaidiltians since 2000 (Compensation Database)

Village	Individuals compensated not eligible	Number of dependents	Red flagged Individuals	Number of Dependents
Dokaidilti	50	91	185	843

This next table presents all individual surveyed in the Village Land Survey of Dokaidilti (computed on Cadastral data).

Table 4 : Dokaidilti Household Survey

	Nbr Household	Nbr HhM
Total	85	539
Not Eligible	73	439
Potential Eligible	10	100
Eligible	2	14

The Compensation Database indicated there are 235 compensated *individuals* (columns 2+4) with 934 declared dependents (columns 3+5).

The Village Land Survey data accurately identified 85 *households* with a total of 539 dependents. The difference in the "number of dependents" is to 1: 2. This point highlights the fact that the Red Flag concept, when computed on compensation data, tends to overstate the potential number of At Risk Households and the impact of project land needs on a given village.

Dokaidilti's Village Land Survey also allows us to compare the quality of declared versus measured data, such as "Number of dependents" and "Area cultivated by the Household". The next table presents the declared & measured answers of the 71 CdM (head of household) that have been previously compensated in the village and also surveyed by the Socio-Cadastral team.

Table 5 : Comparison Between Declared & Measured Data

	Declared Cordes (Compensation)	Measured Cordes (Cadastre)
Number of cord cultivated	6	12
Number of dependents	7	7

The difference between declared and measured cultivated area is a factor of 2. By using declared cultivated area to compute Red Flags led to an overestimation of the number of potential resettlement eligible people. The use of declared numbers of dependents and land holdings explains why, in Table 2, one hundred eighty five (185) individuals have been red flagged on the basis of their declarations while in fact only two (2) households (Table 3) are eligible on the basis of landholdings per capita in the household.

The addition of Cadastral mapping and the grouping of inhabitants into households have considerably improved the quality of the data used to calculate resettlement eligibility. But several other elements also affect inhabitants' economic viability. Since late 2007 a questionnaire has been administered as part of the land acquisition and Cadastral mapping process that addresses these factors as well as the household composition and agricultural status. These factors are economic and social:

- Surveyed or compensated households may have other sources of income which supplement their agricultural production
- The local concept of "dependent" is complex; one individual may provide certain kinds of economic support and declare the recipient a "dependent" although that dependent is also the beneficiary of other types of economic support from other household members. Some members of a household may, and frequently do, dispose of resources that they do not necessarily share with other members.

Therefore the concept of "economic viability" must be examined at both the Household and Individual level. The Household provides a safety net for obtaining land and the support of its economic subgroups that draw on various resources not necessarily available to the entire household. An individual in the household may also have economic dependents that are outside the household.

A Complex Household

(This household is fictional but displays social characteristics extremely common in the area)

Nadjingar, age 73, with three wives and 18 cordes of land. As the man who established the household concession (homestead) where most of his kin live, he is considered the CdM. Though he is crippled by arthritis and currently farms only 1 corde located within 0.5 km of the village, he is famous as a bone setter.

- Wife # 1 was from the same village. She had 3 surviving children by Nadjingar but the land she inherited from her father and farmed to provide food for her children returned to her family on her death
- Wife # 2, Nodjitel, is his distant maternal cousin from a village 24 km away. She has 3 surviving sons and 1 daughter by Nadjingar. She has moved back to her paternal village but never remarried so she is separated but not divorced.
- Wife # 3, Denelelem, comes from the adjacent village but is no kin of Nadjigar. She has 2 surviving daughters by Nadjigar but she also has 2 boys, now teenagers, by her previous husband. She feeds all her children and Nadjingar from the 2 cordes he offered her plus 1 corde she borrowed from her brother in her nearby home village. She also uses the product of Nadjingar's field which he gives to her as recognition of her services.

What has happened to the surviving children?

Wife # 1's sons remain with their father.

- Mbainaisem, the first born and first to marry has his house in the same concession as Nadjingar.
- Wife # 1 lives in a separate concession in the same village that he built for her and her 3 children. She cultivates 3 cordes from her father and also sells local brew. She sends Mbainaisem a meal every day; she doesn't send food to her father-in-law but makes sure Nadjingar always gets a bottle when she brews. Mbainaisem usually sends her half a sack of his home-grown grain each month and a washbasin full to his father Nadjingar.
- Son # 2, Yotoloum, married and had 2 children, both of whom died. His wife left him because he took to drink. Today he is an alcoholic, living in the same concession with his father and dependent on the household for support. He eats with his brothers Mbainaisem and Rimasbe.
- Son # 3 excelled at school and is now a civil servant in the capital. He sends his father 20 000 CFA each time he is paid, which may be anywhere from monthly to a 6 months gap. He has sent the two youngest of his 7 children to keep Nadjingar company and be fostered by their grandfather.

Wife # 2 Nodjitel

- Son # 1 was a trouble-maker. Eventually he moved to be with his mother in her home village.
- Daughter, Neaobe, married a man from a nearby village but is now separated. She has come home with her 3 children to stay with her brother, Rimasbe.
- Son # 2, Rimasbe, is a dedicated farmer. He has married two women from the same canton, both of whom help him farm his fields. They live in a concession next to Nadjingar's. Nadjingar is supported i.e. fed mainly by these two daughter-in-laws who regularly send him meals, which he then shares with his grandchildren. Wife # 1 is barren, but # 2 is pregnant.
- Son # 3 is about 18. He lives in the same concession but --is interested in marrying a village girl and has started farming peanuts in order to have enough money to make an impression on her. He eats with Rimasbe, his full brother.

Wife # 3, Denelelem,

- Laram, daughter # 1 has married and moved to town, where she makes beer and runs a cabaret. During the New Year's festivities she always sends her mother 4 new dresses.
- Daughter # 2 is living with her mother. She is old enough to undertake many of the household tasks.
- Son # 1 by previous husband is unmarried and lives with his mother and half-sister. He is old enough to farm independently but since he has no kin in the village he has no access to inherited land or anyone who will readily pay his bridewealth.
- Son # 1 is in his young teens. He still depends on his mother for support. From time to time he helps her farm but most of his time is spent "running with the boys". He sleeps most of the time with the oldest of his companions who has his own house.

The next table resumes the situation of this household while the next one presents the economic subgroups in the household.

Table 6 : Summary of a complex household

Nbr. of kin	36
Nbr living in Nadjingar's concession	18
Nbr economically supported by ChM	6
Nbr Cordes available to Nadjingar	18

Table 7 : Details of a complex household

# Economic subgroups in the household	# cords available	
1	Nadjingar+ wife#3 + 2 grandchildren	1
2	Wife#3 + Nadjingar + 1 da + 2 sons	3
3	Son#3/wife#1 contributes 20 000 CFA	0
4	Mbainaisem Son#1/wife#1 + 2wives+ 7ch + bro + Nadjingar	3
5	Wife#2/Mbainaisem + 3ch	3
6	Son#2 Rimasbe/wife#2 + 4si & ch +2w+ 2bro (incl. Yotoloum) + Fa (Nadjingar)	6
7	Laram, Da/Wife#3 4 dresses	0
	Nadjingar's land in fallow	2
Pending Inheritance Claims for cords	Son#2/Wife#1 Yotoloum	
	Son#3/Wife#2	
Residual Family claims to cords	Son#3/wife#1	
	Son#1/wife#2	

To comprehend this complexity the Land Acquisition team and Land Management Action Plan group are now using a detailed socioeconomic questionnaire as well as the Cadastral and Household survey teams. (See Appendix A for the questionnaire).

4. Red Flag Filter and Fast Tracking:

The Village Land Survey and new socioeconomic questionnaire provide clear and accurate data about a household, its individual members, and its agricultural assets. The questionnaire also shows the economic subgroups and the assets and earnings available to each of them.

Already compensated individuals deemed eligible for Resettlement Options have been evaluated based on the less reliable declared compensation data (discussed in section 1 above). Those below 2/3 c per HHM were investigated for other income sources which provided alternate support. Those with neither land nor other sources of adequate income were or will be offered the Resettlement Options.

What has become of these various individuals affected by Project land needs? In the case of those benefiting from Resettlement, it is dependent on how well they have fared through the resettlement option they chose. For those whose declarations did not put them under 2/3 corde, their situation is contingent upon the truthfulness of their declared dependents and land holdings.

To test the current situation of individuals compensated in the past, the Land Mitigation Action Plan Team developed a Fast-Track Mitigation Survey Team to assess individuals and households livelihood status. Their findings are assessed by the LUMAP Advisor. The LUMAP Advisor then conducts further assessment and recovery planning through the LUMAP Counselor.

As the first step, a data filter that draws on the correction factors learned in the Dokaidilti survey, shows compensated people that are more probably in difficulty. This filter is applied to all compensated individuals/dependents whether "Red-Flagged" or not. This filter and fast track work as Figure 4 demonstrates:

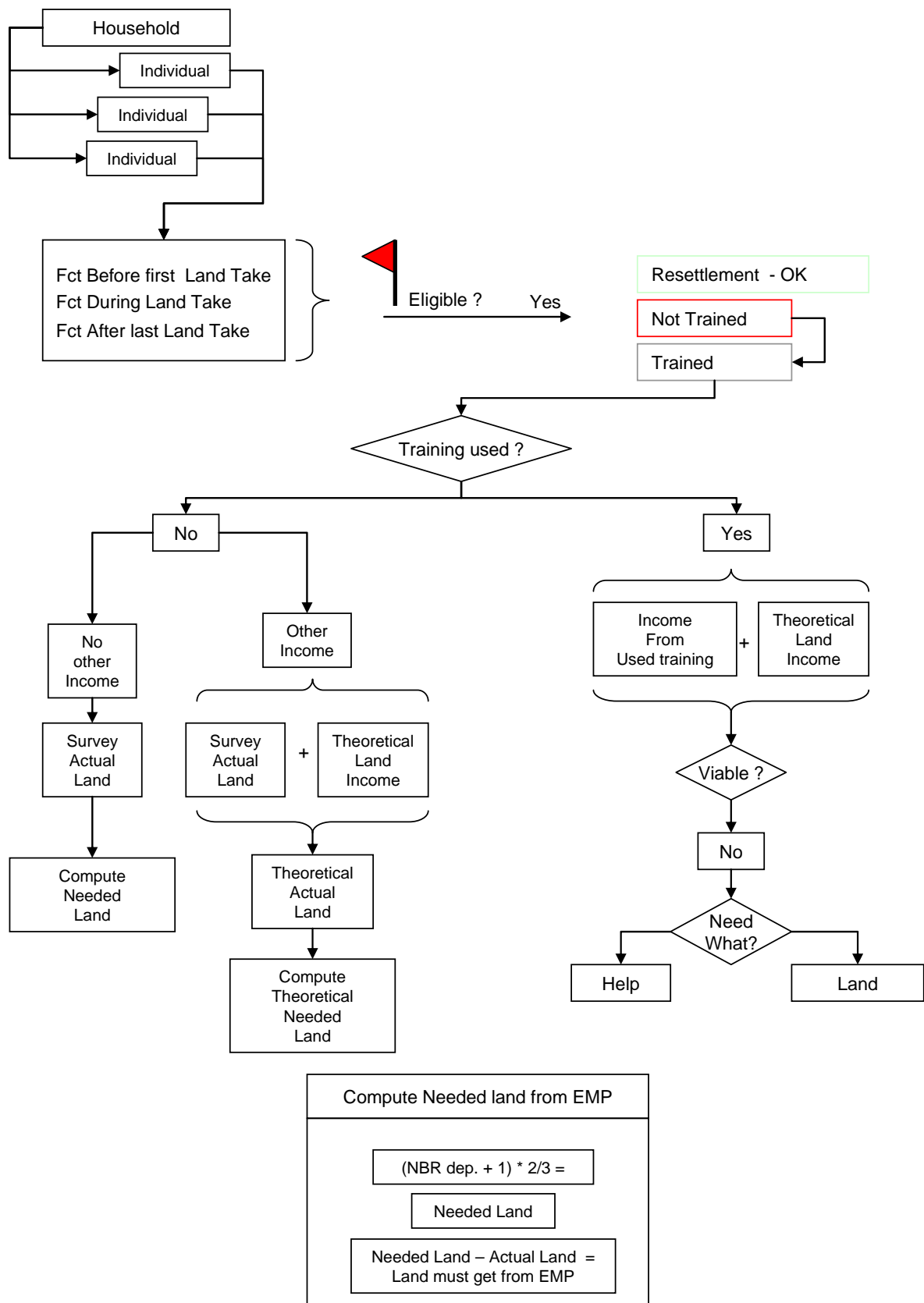


Figure 4: Fast-track livelihood process for individuals and households.

5. Summary of 2007

The LUMAP has developed mapping and socioeconomic survey tools that give a complete picture of the household situation and resource availability in severely affected villages. The same tools are being used to provide far more reliable information about already affected individuals in moderately and less affected villages to find who needs to be "Fast Tracked" to recovery.

Socioeconomic survey tools have been conjoined with monitoring results on the effectiveness of individual training in craft skills or improved agriculture techniques. When put all together into a filtering process it is possible to identify cases where households or individuals are truly at risk and in need.

The improved identification process demonstrates how on the single criterion of land availability alone many fewer people are at risk than appear to be from declarative data given by affected people.

The filtration process using additional economic income also demonstrates how many people are managing by farming and other activities to escape from deep poverty.

For all these reasons Red Flag (computed on compensation declared data) should be used with caution. Table 1 presents an overestimated number of resettlement eligible people that is not totally grounded in reality. Despite this fact, Red flag plus Lessons Learned Corrective Factors is used by the Fast Track Team to target individuals that present the highest chance of eligibility for inclusion in the filtration process.

Working on these two fronts, the situation in Dokaidilti is finished and Ngalaba and Dildo where Village Land Surveys are underway and 32 % complete at year end 2007. The Fast Track Team, which was trained, equipped and up and running at the beginning of December had surveyed 9% of possible at risk individuals in other villages.

6. 2008 Plan

Five of the seven severely affected villages should be surveyed by mid-rainy season 2008. Survey productivity will drop greatly during the rains due to farmers not available and difficult access for the teams. However, the remaining two villages should be finished before the end of 2008. As each village is completed the LUMAP team will analyze the data, as has already been done for Dokaidilti. Compensation Database maps will be queried to show the previous cultivators of compensated land waiting to be reclaimed and returned. This information will be matched to the land needs of those land-poor households and any additional needs for Third Party Compensation calculated. Site Specific Plans for community recovery will be developed one by one according to the Site Specific Livelihood Mitigation Plan Framework that has recently been generated.

People from other villages who are still at risk when filtered through survey and income information will also be consulted and counseled on livelihood recovery by means of increased income or additional land. One test to carry out in 2008 will be to survey a random number of project-affected individuals in moderate and less affected villages to test the accuracy of the filter.

Even though Cadastral mapping of the villages will not be completed by rainy season 2008, the Dokaidilti analysis and Site Specific Plan demonstrated ways in which the greatest land needs of this community can be dealt with soon enough to provide people with more arable land for the 2008 rainy season.

In addition to priority reclamation of land that can be returned to At-Risk people, LUMAP will implement a new resettlement option which allows people to access land too far to be easily cultivated but not far enough to require moving to another village.

An additional tactic for livelihood restoration is LUMAP evaluation of At-Risk individuals' performance track records in Off-Farm or Improved Agriculture training. For those whom the training has not yielded enough replacement income to compensate for land lost to the project, LUMAP will provide land through Third Party Compensation, or if necessary, through resettlement to make them viable. In other cases, after discussion, additional training or other assistance may appear enough to render motivated individuals viable.

The position of LUMAP Counselor has been created and begins in February 2008. The LUMAP Counselor will assist the At Risk person in developing a recovery plan. The recovery plan will utilize all of the options available through the Chad Resettlement and Compensation Plan as laid out in the Land Management Manual.

An important tool in targeting training to those who can use it will be the initiation of literacy, numeracy and management instruction open not just to those At-Risk but to everyone in the village. Interested people can profit to the degree they are willing to learn, but At-Risk individuals must demonstrate they can benefit from training before they can choose the Off Farm or Improved Agriculture Training resettlement options.

7. Appendix

1. Identification du chef de ménage

Prénom : _____ Nom du famille: _____ Autre noms : _____

CIN ID de la base de données Année naissance

Votre village de naissance : _____ Village/champ saison pluvieuse _____ Village saison sèche _____

2. Prénom du père : Nom de famille du père :

Village de Résidence du père : même village même canton (nom du village) ailleurs

Prénom de la mère : Nom de famille de la mère :

Village de Résidence de la mère : même village même canton (nom du village) ailleurs

*Est-ce que la personne enquêtée souffre d'une infirmité Parait-elle vulnérable? Maladie chronique Sourde
Aveugle Vieillesse Handicap physique Handicap mental Alcoolisme évident Autre.....*

3. Habitez-vous ce village depuis toujours? Oui Non Si non :

Êtes-vous venu..... Depuis mon mariage Avant début du Projet Après début du Projet

Venu à cause de..... Un parent Chercher des terres Chercher travail Esso Affectation Service Commerce

Préfecture d'origine Groupe ethnique

4. Qui est-ce que vous donne à manger? Moi-même Mon père Ma mère Mon mari Grand parent

Autre.....

Observations :

5. Combien êtes-vous dans la maison Enfant et adulte de chaque catégorie qui dorment et mangent tous les jours chez vous, depuis au moins 6 mois

Homme 16ans+ :	Femme 16ans+ :	Enfants 6-15 ans :	Enfants 0-5 ans :	Non Nucléaire :
NE PAS INCLURE dans le total les enfants venus au village pour les vacances			INCLURE les enfants partis pour les vacances	

6. Parmi les hommes de plus de 16 ans, combien ont ou sont :

Un travail chez Esso : _____	Un travail non-Esso : _____	Un commerce régulier : _____	Chercheur d'emploi : _____	Ne cherche pas : _____
------------------------------	-----------------------------	------------------------------	----------------------------	------------------------

7. Avez-vous dans votre maison des enfants qui fréquentent? Concerne tous les enfants habitant à la maison + les enfants directs qui fréquentent ailleurs

<input type="checkbox"/> Sans enfants en âge	<input type="checkbox"/> Ne vont pas à l'école (6-15)	<input type="checkbox"/> École	<input type="checkbox"/> Collège (jusqu'en 3 ^e)	<input type="checkbox"/> Lycée (2 nd e –	<input type="checkbox"/> Université ou grande	<input type="checkbox"/> Enseignement technique (tout
--	---	--------------------------------	---	---	---	---

scolaire	ans)	primaire		bac)	école	genre)
----------	------	----------	--	------	-------	--------

8. Parlez-vous Français? Oui Non Lisez-vous Français ? Oui Non Savez-vous écrire ? Oui Non

9. Quel est le niveau de scolarité que vous avez atteint?

<input type="checkbox"/> Aucune scolarité	<input type="checkbox"/> École primaire	<input type="checkbox"/> Collège (jusqu'en 3 ^e)	<input type="checkbox"/> Lycée (2 nd e – bac)	<input type="checkbox"/> Université ou grande école	<input type="checkbox"/> Enseignement technique (tout genre)
---	---	--	---	--	--

10. Avez-vous déjà reçu une compensation? Non Oui Si oui combien de fois? : _____ Numéro IN : _____

Avez- vous déjà reçu une formation Non Oui Si oui, formation en quoi ? _____

11. Quels sont vos activités habituelles?

Marquez X pour le répondant, A pour un autre dans la maison

Vous- même	<input type="checkbox"/> Agriculture	<input type="checkbox"/> Élevage	<input type="checkbox"/> Agent de l'état	<input type="checkbox"/> Dibiterie/ Boissons	<input type="checkbox"/> Commerce	<input type="checkbox"/> Petit commerce	<input type="checkbox"/> Pêche	<input type="checkbox"/> Chasse
	Artisan	<input type="checkbox"/> Manceuvre	<input type="checkbox"/> Petits boulots	<input type="checkbox"/> Maraîcher	<input type="checkbox"/> Journalier Esso	<input type="checkbox"/> Moso	<input type="checkbox"/> Inactif	<input type="checkbox"/> Autre

12. Votre rendement agricole de la dernière saison. Combien de sacs de.....

Culture	Mil pennicillaire	Sorgho	Arachide	Sésame	Riz	Autre.....
Nombre de sacs						

13. Combien gagnez-vous par semaine avec la chasse/pêche/boulots/maraîchage ? Saison sèche _____

Pluvieuse _____

14. Avez-vous actuellement un travail rémunéré? Oui Non

Si oui : Artisanat Salaire

Si métier, lequel _____ Combien gagnez-vous avec ce métier par semaine? _____

Comment avez-vous acquis ce métier Esso Parent Apprentissage

Si Salaire :

<input type="checkbox"/> Un salaire Non-Esso	<input type="checkbox"/> Un salaire journalier Esso	<input type="checkbox"/> Salaire permanent Esso	<input type="checkbox"/> Gardiennage <input type="checkbox"/> Une pension/retraite	<input type="checkbox"/> De l'argent régulière d'un parent de la ville	<input type="checkbox"/> Sans salaire, ni pension, ni argent de qq
---	---	---	---	---	--

Salaire annuelle de plus + OU de moins – de : 100 000 FCFA 50 000 FCFA

15. Quel sont les sources de revenus du ménage?

<input type="checkbox"/> Agriculture traditionnelle	<input type="checkbox"/> Cultures de rente	<input type="checkbox"/> Maraîchage	<input type="checkbox"/> Artisanat	<input type="checkbox"/> Petits boulot
<input type="checkbox"/> Pêche	Chasse	Beignets/bouillie	Timbrier	<input type="checkbox"/> Moso

<input type="checkbox"/> Boissons locales	<input type="checkbox"/> Charbon de bois	<input type="checkbox"/> Élevage	<input type="checkbox"/> Travail salarié non Esso	<input type="checkbox"/> Commerce
<input type="checkbox"/> Pension/Retraite	<input type="checkbox"/> Loyers	<input type="checkbox"/> Argent reçu de parents	<input type="checkbox"/> Travail salarié Esso	<input type="checkbox"/>
<input type="checkbox"/> vente matériels obtenus grâce à la compensation/salaires	<input type="checkbox"/> Autre	<input type="checkbox"/> Sans revenus		

16. Avez-vous vendu (ou gagné) plus ou moins que 50 000 (entre 50 et 100 000) ou plus de 100 000 FCFA depuis la dernière récolte?

Indiquez les activités génératrices avec - 5 ou + 5 ou -10 ou + 10

<input type="checkbox"/> Agriculture traditionnelle	<input type="checkbox"/> Cultures de rente	<input type="checkbox"/> Maraîchage	<input type="checkbox"/> Artisanat	<input type="checkbox"/> Petits boulot
<input type="checkbox"/> Pêche	Chasse	Beignets/bouillie	Timbrier	<input type="checkbox"/> Moso
<input type="checkbox"/> Boissons locales	<input type="checkbox"/> Charbon de bois	<input type="checkbox"/> Élevage	<input type="checkbox"/> Travail salarié non Esso	<input type="checkbox"/> Commerce
<input type="checkbox"/> Pension/Retraite	<input type="checkbox"/> Loyers	<input type="checkbox"/> Argent reçu de parents	<input type="checkbox"/> Travail salarié Esso	<input type="checkbox"/>
<input type="checkbox"/> vente matériels obtenus grâce à la compensation/salaires	<input type="checkbox"/>	<input type="checkbox"/> Autre	<input type="checkbox"/> Sans revenus	

17. Avez-vous reçu de la compensation d'Esso? Oui Non Si oui, combien de fois.....

18. Est-ce que d'autres de votre ménage ont reçu de la compensation d'Esso? Oui Non

19. Dot Combien de dots avez-vous payé avec argent de la compensation? Avec l'argent du salaire? La dot pour (parenté).....

20. Qualité de la maison principale construite par Esso par argent compensation par salaire par moi-même

Toiture	<input type="checkbox"/> Tôles	<input type="checkbox"/> Paille	<input type="checkbox"/> Terre	<input type="checkbox"/> Toit provisoire (bâches, plastique)	
Murs	<input type="checkbox"/> Terre simple	<input type="checkbox"/> Brique terre	<input type="checkbox"/> Briques cuites	<input type="checkbox"/> Semi-dur (terre+ciment)	<input type="checkbox"/> Dur (parpaings + ciment)
	<input type="checkbox"/> Seko	<input type="checkbox"/> Tôles	<input type="checkbox"/> Planches (partiellement)		
Sol	<input type="checkbox"/> Tout en terre	<input type="checkbox"/> Partiellement cimenté	<input type="checkbox"/> Complètement cimenté	<input type="checkbox"/> Carrelage	<input type="checkbox"/>

21. Que possédez-vous comme meubles?	<input type="checkbox"/> Sans meubles	<input type="checkbox"/> Salon en rotin	<input type="checkbox"/> Salon en bois	<input type="checkbox"/> Bois+coussin	<input type="checkbox"/> Salon moderne rembourré, couvert de tissu
--------------------------------------	---------------------------------------	---	--	---------------------------------------	--

22. Comme lit?	<input type="checkbox"/> Lit Local	<input type="checkbox"/> Lit Manufact.	<input type="checkbox"/> Matelas paille	<input type="checkbox"/> Matelas coton	<input type="checkbox"/> Matelas coton	<input type="checkbox"/> Matelas éponge	<input type="checkbox"/> Natte	<input type="checkbox"/> Carton /Rien
----------------	------------------------------------	--	---	--	--	---	--------------------------------	---------------------------------------

23. Latrine Vérifiez visuellement	<input type="checkbox"/> Sans latrines	<input type="checkbox"/> Latrine plein air	<input type="checkbox"/> Latrine entourée	<input type="checkbox"/> Latrine couverte	<input type="checkbox"/> WC intérieur avec chasse d'eau
	<input type="checkbox"/> partagée	<input type="checkbox"/> partagée	<input type="checkbox"/> partagée	<input type="checkbox"/> partagée	

24. Utilisez-vous des moustiquaires?	<input type="checkbox"/> Non	<input type="checkbox"/> Oui	<input type="checkbox"/> Combien pour le ménage
--------------------------------------	------------------------------	------------------------------	---

25. Dites-moi quelques choses concernant vos bétails :

Bœufs Combien achetés avec argent de la compensation?..... Avec l'argent du salaire?..... Argent d'Agriculture?.....
 Avec les naissances de votre bétail, combien de bœufs avez-vous maintenant?

26. Que possédez-vous comme équipement?

Indiquer si obtenu grâce à la Compensation (C) ou aux salaires (S) d'Esso ou par propre argent d'Agriculture (A) Indiquer le nombre si supérieur à 1

<input type="checkbox"/> Charrue	A - C - S	<input type="checkbox"/> Pousse-pousse	A - C - S	<input type="checkbox"/> Équipement de maraîchage	A - C - S
<input type="checkbox"/> Motopompe	A - C - S	<input type="checkbox"/> Fusil	A - C - S	<input type="checkbox"/> Équipement de forge	A - C - S
<input type="checkbox"/> Téléphone mobile	A - C - S	<input type="checkbox"/> Moulin à mil	A - C - S	<input type="checkbox"/> Grandes Matériels de cuisine	A - C - S
<input type="checkbox"/> Radio qui fonctionne	A - C - S	<input type="checkbox"/> Machine à coudre	A - C - S	<input type="checkbox"/> Décortiqueuse	A - C - S
<input type="checkbox"/> Moto ou mobylette	A - C - S	<input type="checkbox"/> Voiture	A - C - S	<input type="checkbox"/> Machine pate d'arachides	A - C - S
<input type="checkbox"/> Vélo	A - C - S	<input type="checkbox"/> Groupe Électrogène	A - C - S	<input type="checkbox"/> Fonds de commerce	A - C - S
<input type="checkbox"/> Charrette à bœufs	A - C - S	<input type="checkbox"/> Boutique	A - C - S	<input type="checkbox"/> Aucun équipement	A - C - S
<input type="checkbox"/> Corps butteur	A - C - S	<input type="checkbox"/> Gargote/dibiterie	A - C - S	<input type="checkbox"/> Rien	

Si la réponse est « Rien » mais le répondant/quelqu'un du ménage a reçu de la compensation ou salaire, demandez comment c'est disposé

.....

Signature EEPCI

Signature de l'Ayant Droit