



## Soaring Bird Sensitivity Map: A planning tool for wind energy and other sectors

### SEARCH SUMMARY

Masder

1km buffer

Countries: Jordan

Centroid: N31.870 E36.210 with 1 km buffer

Combined Sensitivity: Potential (0)

0 soaring bird species observed while a further 25 soaring bird species are thought to occur in this area.

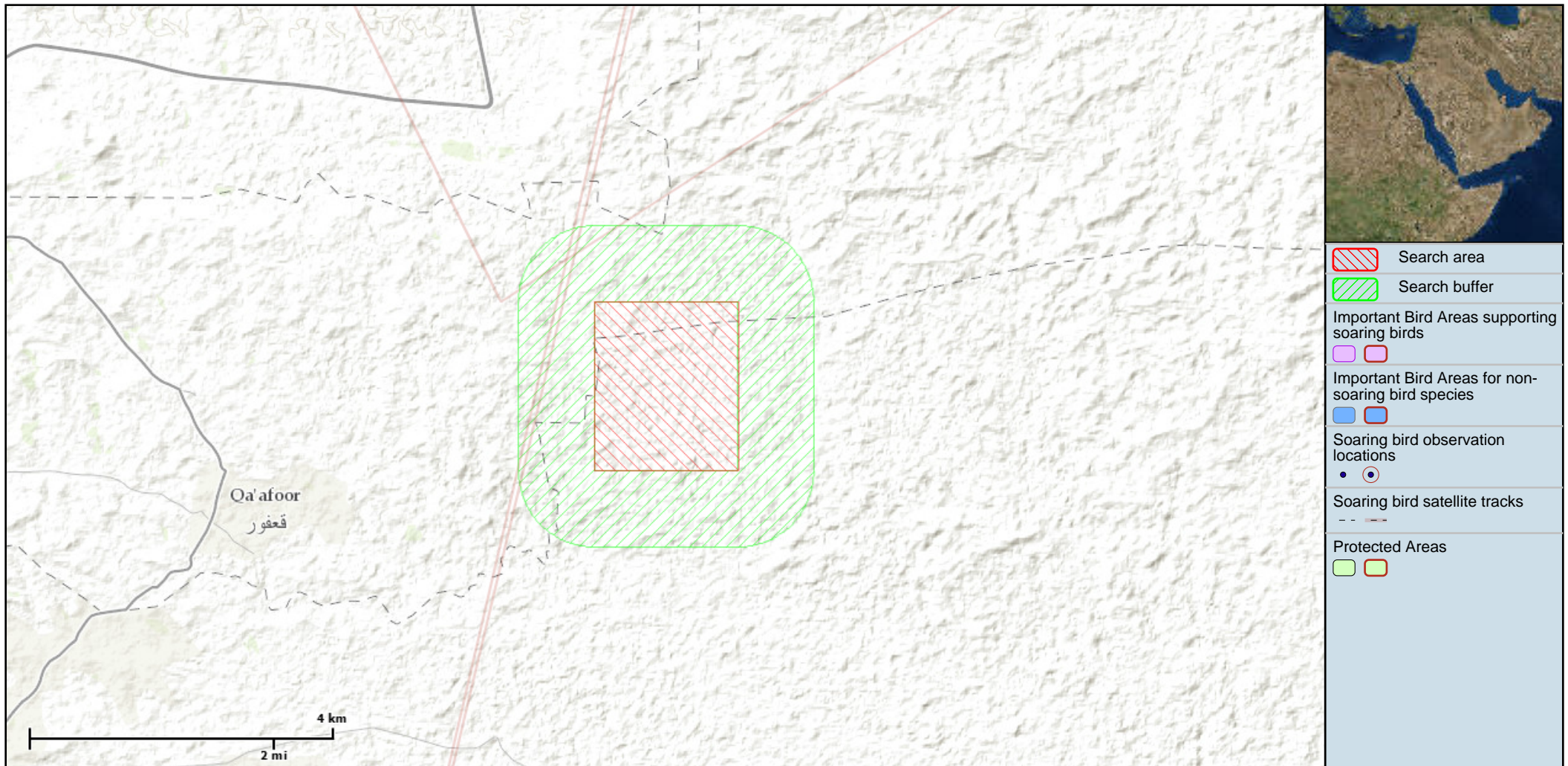
0 soaring bird observation locations.

0 IBAs supporting soaring birds plus a further 0 IBAs for non-soaring bird species.

0 protected sites.

2 satellite tracked migratory routes.

## MAP





## Soaring Bird Sensitivity Map: A planning tool for wind energy and other sectors

### GUIDANCE ON INTERPRETING SEARCH RESULTS

For each search that a user performs, the tool calculates a sensitivity value based on the available soaring bird data and assigns the location to one of six sensitivity categories (defined in more detail below). This calculation takes into account the proportion of each species' global population present, the global conservation status (IUCN Red List) of each species and the inherent collision vulnerability of each species based on their morphology and flight behaviour.

Information for this region is incomplete and an appropriate Environmental Impact Assessments (EIA) should always be undertaken to fully assess the sensitivity of a site. Further information on the underlying methodology can be found in the Instructions section of the web tool.

Sensitivity category: UNKNOWN

There are insufficient soaring bird data on which to base a sensitivity score. This should not, however, be interpreted as meaning that a site has no or low sensitivity.

Sensitivity category: POTENTIAL

A small number of soaring bird records exist within the defined search area suggesting that the site could be sensitive.

Sensitivity category: MEDIUM and HIGH

Soaring bird species are known to be present in significant numbers. Caution advised as development at this location may result in significant impacts on the populations of species present. Development may not be appropriate at or near to this location or may be appropriate only if special mitigation measures are put in place.

Sensitivity category: VERY HIGH and OUTSTANDING

Soaring bird species are known to be present in very significant numbers. Caution advised as development at this location may result in considerable impacts on the populations of species present. Wind energy development is unlikely to be appropriate at or near to this location.



# Soaring Bird Sensitivity Map:

A planning tool for wind energy and other sectors

## SPECIES (25)

Name	Peak Count	Presence	SVI	Status	Global population	Source
Lesser Kestrel	-	expected	6	LC	170000	BirdLife species range map
Bonelli's Eagle	-	expected	9	LC	10000	BirdLife species range map
Eastern Imperial Eagle	-	expected	9	VU	9250	BirdLife species range map
Steppe Eagle	-	expected	9	LC	160000	BirdLife species range map
White Stork	-	tracked	10	LC	510000	Fiedler et al.
Black Stork	-	expected	10	LC	34000	BirdLife species range map
Hen Harrier	-	expected	8	LC	370000	BirdLife species range map
Pallid Harrier	-	expected	8	NT	36000	BirdLife species range map
Montagu's Harrier	-	expected	8	LC	540000	BirdLife species range map
Greater Spotted Eagle	-	expected	9	VU	9100	BirdLife species range map
Lesser Spotted Eagle	-	expected	9	LC	79000	BirdLife species range map
Saker Falcon	-	expected	6	EN	32700	BirdLife species range map
Eurasian Sparrowhawk	-	expected	6	LC	4000000	BirdLife species range map
Peregrine Falcon	-	expected	6	LC	500000	BirdLife species range map
Eurasian Hobby	-	expected	6	LC	1200000	BirdLife species range map
Common Kestrel	-	expected	6	LC	8000000	BirdLife species range map



# Soaring Bird Sensitivity Map:

A planning tool for wind energy and other sectors

## SPECIES (25)

Name	Peak Count	Presence	SVI	Status	Global population	Source
Red-footed Falcon	-	expected	6	NT	550000	BirdLife species range map
Common Crane	-	expected	10	LC	365000	BirdLife species range map
Griffon Vulture	-	expected	10	LC	1000000	BirdLife species range map
Booted Eagle	-	expected	9	LC	253000	BirdLife species range map
Osprey	-	expected	7	LC	750000	BirdLife species range map
European Honey-buzzard	-	expected	7	LC	675000	BirdLife species range map
Short-toed Snake-eagle	-	expected	7	LC	170000	BirdLife species range map
Black Kite	-	expected	8	LC	2625000	BirdLife species range map
Long-legged Buzzard	-	expected	7	LC	274000	BirdLife species range map



# Soaring Bird Sensitivity Map:

A planning tool for wind energy and other sectors

## SATELLITE TRACKS (2)

Count	Species	Source
2	White Stork	Fiedler et al.



# Soaring Bird Sensitivity Map:

A planning tool for wind energy and other sectors

## LOCATIONS BY SPECIES

Name	Peak Count	Presence	SVI	Status	Global population	Source
Lesser Kestrel	-	expected	6	LC	170000	BirdLife species range map
Bonelli's Eagle	-	expected	9	LC	10000	BirdLife species range map
Eastern Imperial Eagle	-	expected	9	VU	9250	BirdLife species range map
Steppe Eagle	-	expected	9	LC	160000	BirdLife species range map
White Stork	-	tracked	10	LC	510000	Fiedler et al.

Name	SI	Type	Distance	Source
Flight - 10	Unknown	Track	unavailable	Fiedler et al.
Flight - 10	Unknown	Track	unavailable	Fiedler et al.

Black Stork	-	expected	10	LC	34000	BirdLife species range map
Hen Harrier	-	expected	8	LC	370000	BirdLife species range map
Pallid Harrier	-	expected	8	NT	36000	BirdLife species range map
Montagu's Harrier	-	expected	8	LC	540000	BirdLife species range map
Greater Spotted Eagle	-	expected	9	VU	9100	BirdLife species range map
Lesser Spotted Eagle	-	expected	9	LC	79000	BirdLife species range map
Saker Falcon	-	expected	6	EN	32700	BirdLife species range map



# Soaring Bird Sensitivity Map:

A planning tool for wind energy and other sectors

## LOCATIONS BY SPECIES

Name	Peak Count	Presence	SVI	Status	Global population	Source
Eurasian Sparrowhawk	-	expected	6	LC	4000000	BirdLife species range map
Peregrine Falcon	-	expected	6	LC	500000	BirdLife species range map
Eurasian Hobby	-	expected	6	LC	1200000	BirdLife species range map
Common Kestrel	-	expected	6	LC	8000000	BirdLife species range map
Red-footed Falcon	-	expected	6	NT	550000	BirdLife species range map
Common Crane	-	expected	10	LC	365000	BirdLife species range map
Griffon Vulture	-	expected	10	LC	1000000	BirdLife species range map
Booted Eagle	-	expected	9	LC	253000	BirdLife species range map
Osprey	-	expected	7	LC	750000	BirdLife species range map
European Honey-buzzard	-	expected	7	LC	675000	BirdLife species range map
Short-toed Snake-eagle	-	expected	7	LC	170000	BirdLife species range map
Black Kite	-	expected	8	LC	2625000	BirdLife species range map
Long-legged Buzzard	-	expected	7	LC	274000	BirdLife species range map



# Soaring Bird Sensitivity Map:

A planning tool for wind energy and other sectors

## DISCLAIMERS

BirdLife International makes no warranties or representations, express or implied, regarding the use of the material appearing on in this report with regard to its correctness, reliability, accuracy, or otherwise. The material and geographic designations in this report do not imply the expressions of any opinion whatsoever on the part of BirdLife International concerning the legal status of any country, territory or area, nor concerning the delimitation of its frontiers or boundaries. Neither BirdLife International nor its affiliated or related entities or its content providers shall be responsible or liable to any person, firm or corporation for any loss, damage, injury, claim or liability of any kind or character based on or resulting from any information contained in this report. BirdLife International may update or make changes to the data provided at any time without notice; however, BirdLife International makes no commitment to update the information contained therein.

## Errors and Omissions

BirdLife International endeavours to maintain accurate and up-to-date data at all times. However, if errors or omissions are identified, the user should notify BirdLife International so that they can be corrected in future releases of the data. Users can contact BirdLife International using the details below. Users can contact BirdLife International at [MSBtool@birdlife.org](mailto:MSBtool@birdlife.org)





## Soaring Bird Sensitivity Map: A planning tool for wind energy and other sectors

### SEARCH SUMMARY

Masder

2km buffer

Countries: Jordan

Centroid: N31.870 E36.210 with 2 km buffer

Combined Sensitivity: Potential (0)

0 soaring bird species observed while a further 23 soaring bird species are thought to occur in this area.

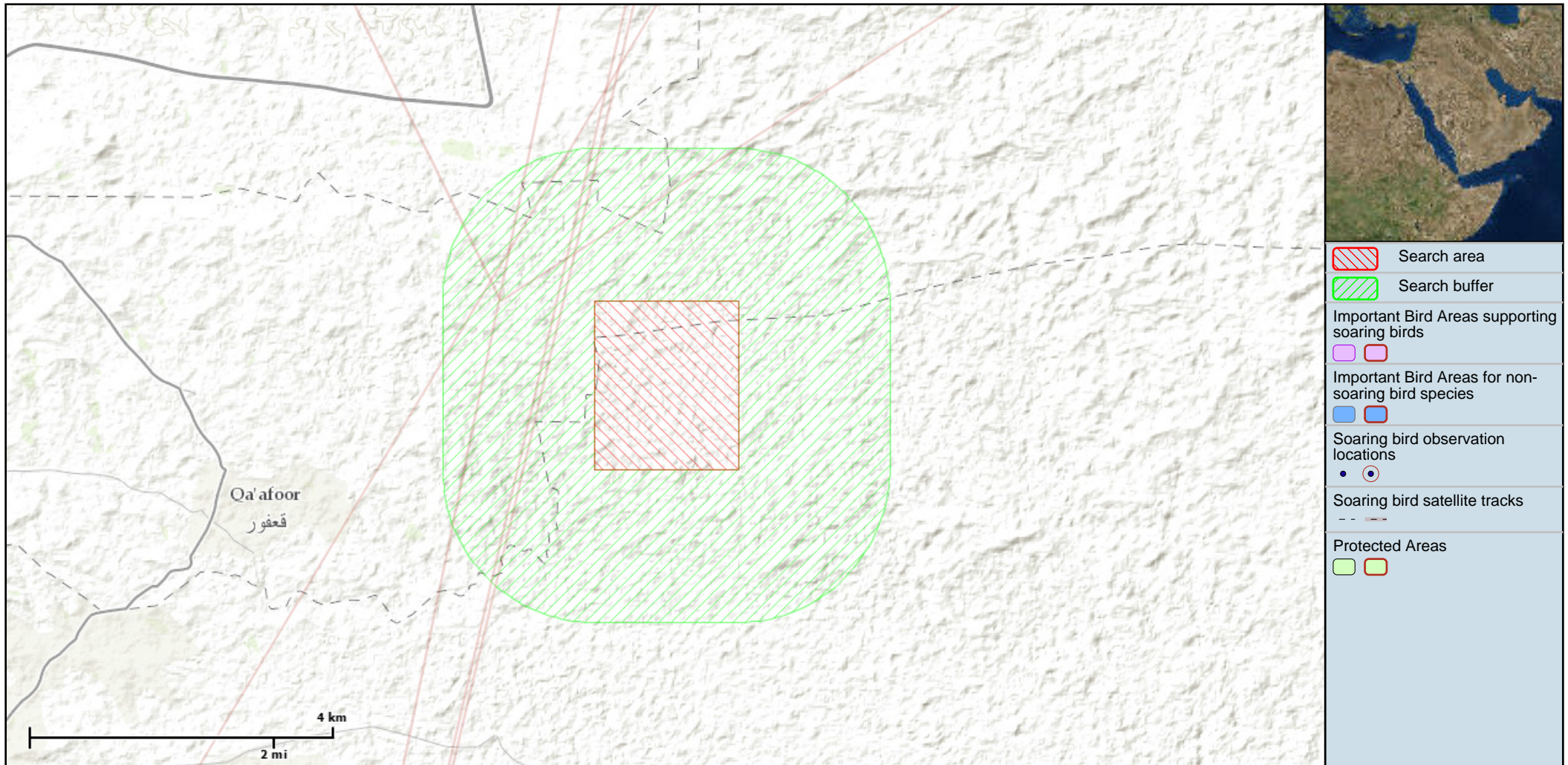
0 soaring bird observation locations.

0 IBAs supporting soaring birds plus a further 0 IBAs for non-soaring bird species.

0 protected sites.

4 satellite tracked migratory routes.

## MAP





## Soaring Bird Sensitivity Map: A planning tool for wind energy and other sectors

### GUIDANCE ON INTERPRETING SEARCH RESULTS

For each search that a user performs, the tool calculates a sensitivity value based on the available soaring bird data and assigns the location to one of six sensitivity categories (defined in more detail below). This calculation takes into account the proportion of each species' global population present, the global conservation status (IUCN Red List) of each species and the inherent collision vulnerability of each species based on their morphology and flight behaviour.

Information for this region is incomplete and an appropriate Environmental Impact Assessments (EIA) should always be undertaken to fully assess the sensitivity of a site. Further information on the underlying methodology can be found in the Instructions section of the web tool.

#### Sensitivity category: UNKNOWN

There are insufficient soaring bird data on which to base a sensitivity score. This should not, however, be interpreted as meaning that a site has no or low sensitivity.

#### Sensitivity category: POTENTIAL

A small number of soaring bird records exist within the defined search area suggesting that the site could be sensitive.

#### Sensitivity category: MEDIUM and HIGH

Soaring bird species are known to be present in significant numbers. Caution advised as development at this location may result in significant impacts on the populations of species present. Development may not be appropriate at or near to this location or may be appropriate only if special mitigation measures are put in place.

#### Sensitivity category: VERY HIGH and OUTSTANDING

Soaring bird species are known to be present in very significant numbers. Caution advised as development at this location may result in considerable impacts on the populations of species present. Wind energy development is unlikely to be appropriate at or near to this location.



# Soaring Bird Sensitivity Map:

A planning tool for wind energy and other sectors

## SPECIES (23)

Name	Peak Count	Presence	SVI	Status	Global population	Source
Peregrine Falcon	-	expected	6	LC	500000	BirdLife species range map
Steppe Eagle	-	expected	9	LC	160000	BirdLife species range map
White Stork	-	tracked	10	LC	510000	Fiedler et al.
Black Stork	-	expected	10	LC	34000	BirdLife species range map
Hen Harrier	-	expected	8	LC	370000	BirdLife species range map
Pallid Harrier	-	expected	8	NT	36000	BirdLife species range map
Montagu's Harrier	-	expected	8	LC	540000	BirdLife species range map
Greater Spotted Eagle	-	expected	9	VU	9100	BirdLife species range map
Lesser Spotted Eagle	-	expected	9	LC	79000	BirdLife species range map
Saker Falcon	-	expected	6	EN	32700	BirdLife species range map
Lesser Kestrel	-	expected	6	LC	170000	BirdLife species range map
Eastern Imperial Eagle	-	expected	9	VU	9250	BirdLife species range map
Eurasian Hobby	-	expected	6	LC	1200000	BirdLife species range map
Common Kestrel	-	expected	6	LC	8000000	BirdLife species range map
Red-footed Falcon	-	expected	6	NT	550000	BirdLife species range map
Common Crane	-	expected	10	LC	365000	BirdLife species range map



# Soaring Bird Sensitivity Map:

A planning tool for wind energy and other sectors

## SPECIES (23)

Name	Peak Count	Presence	SVI	Status	Global population	Source
Griffon Vulture	-	expected	10	LC	1000000	BirdLife species range map
Booted Eagle	-	expected	9	LC	253000	BirdLife species range map
Osprey	-	expected	7	LC	750000	BirdLife species range map
European Honey-buzzard	-	expected	7	LC	675000	BirdLife species range map
Short-toed Snake-eagle	-	expected	7	LC	170000	BirdLife species range map
Black Kite	-	expected	8	LC	2625000	BirdLife species range map
Long-legged Buzzard	-	expected	7	LC	274000	BirdLife species range map



# Soaring Bird Sensitivity Map:

A planning tool for wind energy and other sectors

## SATELLITE TRACKS (4)

Count	Species	Source
4	White Stork	Fiedler et al.



# Soaring Bird Sensitivity Map:

A planning tool for wind energy and other sectors

## LOCATIONS BY SPECIES

Name	Peak Count	Presence	SVI	Status	Global population	Source
Peregrine Falcon	-	expected	6	LC	500000	BirdLife species range map
Steppe Eagle	-	expected	9	LC	160000	BirdLife species range map
White Stork	-	tracked	10	LC	510000	Fiedler et al.

Name	SI	Type	Distance	Source
Flight - 10	Unknown	Track	unavailable	Fiedler et al.
Flight - 10	Unknown	Track	unavailable	Fiedler et al.
Flight - 10	Unknown	Track	unavailable	Fiedler et al.
Flight - 10	Unknown	Track	unavailable	Fiedler et al.

Black Stork	-	expected	10	LC	34000	BirdLife species range map
Hen Harrier	-	expected	8	LC	370000	BirdLife species range map
Pallid Harrier	-	expected	8	NT	36000	BirdLife species range map
Montagu's Harrier	-	expected	8	LC	540000	BirdLife species range map
Greater Spotted Eagle	-	expected	9	VU	9100	BirdLife species range map
Lesser Spotted Eagle	-	expected	9	LC	79000	BirdLife species range map
Saker Falcon	-	expected	6	EN	32700	BirdLife species range map



# Soaring Bird Sensitivity Map:

A planning tool for wind energy and other sectors

## LOCATIONS BY SPECIES

Name	Peak Count	Presence	SVI	Status	Global population	Source
Lesser Kestrel	-	expected	6	LC	170000	BirdLife species range map
Eastern Imperial Eagle	-	expected	9	VU	9250	BirdLife species range map
Eurasian Hobby	-	expected	6	LC	1200000	BirdLife species range map
Common Kestrel	-	expected	6	LC	8000000	BirdLife species range map
Red-footed Falcon	-	expected	6	NT	550000	BirdLife species range map
Common Crane	-	expected	10	LC	365000	BirdLife species range map
Griffon Vulture	-	expected	10	LC	1000000	BirdLife species range map
Booted Eagle	-	expected	9	LC	253000	BirdLife species range map
Osprey	-	expected	7	LC	750000	BirdLife species range map
European Honey-buzzard	-	expected	7	LC	675000	BirdLife species range map
Short-toed Snake-eagle	-	expected	7	LC	170000	BirdLife species range map
Black Kite	-	expected	8	LC	2625000	BirdLife species range map
Long-legged Buzzard	-	expected	7	LC	274000	BirdLife species range map



# Soaring Bird Sensitivity Map:

A planning tool for wind energy and other sectors

## DISCLAIMERS

BirdLife International makes no warranties or representations, express or implied, regarding the use of the material appearing on in this report with regard to its correctness, reliability, accuracy, or otherwise. The material and geographic designations in this report do not imply the expressions of any opinion whatsoever on the part of BirdLife International concerning the legal status of any country, territory or area, nor concerning the delimitation of its frontiers or boundaries. Neither BirdLife International nor its affiliated or related entities or its content providers shall be responsible or liable to any person, firm or corporation for any loss, damage, injury, claim or liability of any kind or character based on or resulting from any information contained in this report. BirdLife International may update or make changes to the data provided at any time without notice; however, BirdLife International makes no commitment to update the information contained therein.

## Errors and Omissions

BirdLife International endeavours to maintain accurate and up-to-date data at all times. However, if errors or omissions are identified, the user should notify BirdLife International so that they can be corrected in future releases of the data. Users can contact BirdLife International using the details below. Users can contact BirdLife International at [MSBtool@birdlife.org](mailto:MSBtool@birdlife.org)





## Soaring Bird Sensitivity Map: A planning tool for wind energy and other sectors

### SEARCH SUMMARY

Masder

5km

Countries: Jordan

Centroid: N31.870 E36.210 with 5 km buffer

Combined Sensitivity: Potential (0)

0 soaring bird species observed while a further 23 soaring bird species are thought to occur in this area.

0 soaring bird observation locations.

0 IBAs supporting soaring birds plus a further 0 IBAs for non-soaring bird species.

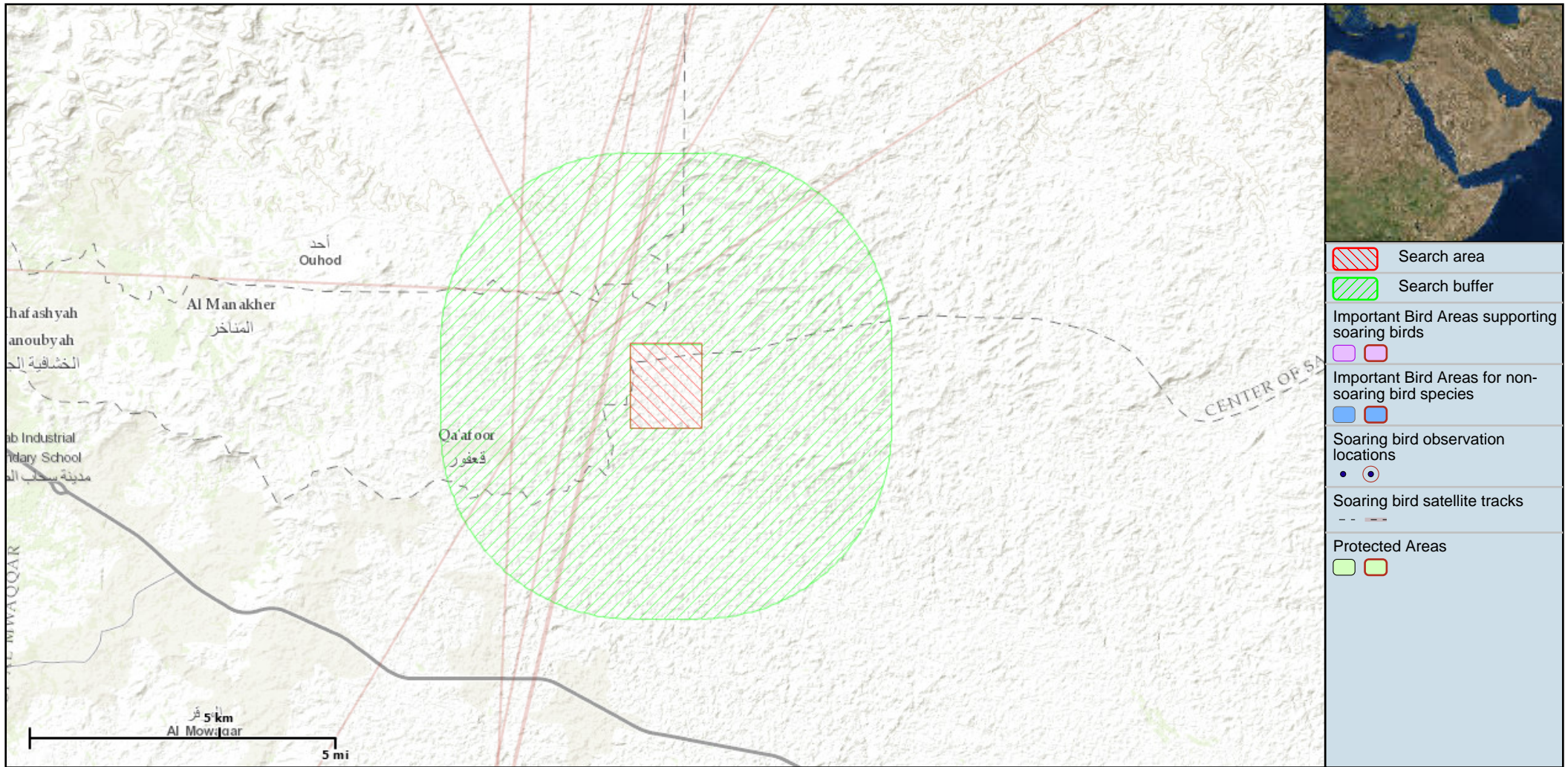
0 protected sites.

6 satellite tracked migratory routes.



# Soaring Bird Sensitivity Map: A planning tool for wind energy and other sectors

## MAP





## Soaring Bird Sensitivity Map: A planning tool for wind energy and other sectors

### GUIDANCE ON INTERPRETING SEARCH RESULTS

For each search that a user performs, the tool calculates a sensitivity value based on the available soaring bird data and assigns the location to one of six sensitivity categories (defined in more detail below). This calculation takes into account the proportion of each species' global population present, the global conservation status (IUCN Red List) of each species and the inherent collision vulnerability of each species based on their morphology and flight behaviour.

Information for this region is incomplete and an appropriate Environmental Impact Assessments (EIA) should always be undertaken to fully assess the sensitivity of a site. Further information on the underlying methodology can be found in the Instructions section of the web tool.

Sensitivity category: UNKNOWN

There are insufficient soaring bird data on which to base a sensitivity score. This should not, however, be interpreted as meaning that a site has no or low sensitivity.

Sensitivity category: POTENTIAL

A small number of soaring bird records exist within the defined search area suggesting that the site could be sensitive.

Sensitivity category: MEDIUM and HIGH

Soaring bird species are known to be present in significant numbers. Caution advised as development at this location may result in significant impacts on the populations of species present. Development may not be appropriate at or near to this location or may be appropriate only if special mitigation measures are put in place.

Sensitivity category: VERY HIGH and OUTSTANDING

Soaring bird species are known to be present in very significant numbers. Caution advised as development at this location may result in considerable impacts on the populations of species present. Wind energy development is unlikely to be appropriate at or near to this location.



# Soaring Bird Sensitivity Map:

A planning tool for wind energy and other sectors

## SPECIES (23)

Name	Peak Count	Presence	SVI	Status	Global population	Source
Peregrine Falcon	-	expected	6	LC	500000	BirdLife species range map
Steppe Eagle	-	expected	9	LC	160000	BirdLife species range map
White Stork	-	tracked	10	LC	510000	Fiedler et al.
Black Stork	-	expected	10	LC	34000	BirdLife species range map
Hen Harrier	-	expected	8	LC	370000	BirdLife species range map
Pallid Harrier	-	expected	8	NT	36000	BirdLife species range map
Montagu's Harrier	-	expected	8	LC	540000	BirdLife species range map
Greater Spotted Eagle	-	expected	9	VU	9100	BirdLife species range map
Lesser Spotted Eagle	-	expected	9	LC	79000	BirdLife species range map
Saker Falcon	-	expected	6	EN	32700	BirdLife species range map
Lesser Kestrel	-	expected	6	LC	170000	BirdLife species range map
Eastern Imperial Eagle	-	expected	9	VU	9250	BirdLife species range map
Eurasian Hobby	-	expected	6	LC	1200000	BirdLife species range map
Common Kestrel	-	expected	6	LC	8000000	BirdLife species range map
Red-footed Falcon	-	expected	6	NT	550000	BirdLife species range map
Common Crane	-	expected	10	LC	365000	BirdLife species range map



# Soaring Bird Sensitivity Map:

A planning tool for wind energy and other sectors

## SPECIES (23)

Name	Peak Count	Presence	SVI	Status	Global population	Source
Griffon Vulture	-	expected	10	LC	1000000	BirdLife species range map
Booted Eagle	-	expected	9	LC	253000	BirdLife species range map
Osprey	-	expected	7	LC	750000	BirdLife species range map
European Honey-buzzard	-	expected	7	LC	675000	BirdLife species range map
Short-toed Snake-eagle	-	expected	7	LC	170000	BirdLife species range map
Black Kite	-	expected	8	LC	2625000	BirdLife species range map
Long-legged Buzzard	-	expected	7	LC	274000	BirdLife species range map



# Soaring Bird Sensitivity Map:

A planning tool for wind energy and other sectors

## SATELLITE TRACKS (6)

Count	Species	Source
6	White Stork	Fiedler et al.



# Soaring Bird Sensitivity Map:

A planning tool for wind energy and other sectors

## LOCATIONS BY SPECIES

Name	Peak Count	Presence	SVI	Status	Global population	Source
Peregrine Falcon	-	expected	6	LC	500000	BirdLife species range map
Steppe Eagle	-	expected	9	LC	160000	BirdLife species range map
White Stork	-	tracked	10	LC	510000	Fiedler et al.

Name	SI	Type	Distance	Source
Flight - 10	Unknown	Track	unavailable	Fiedler et al.
Flight - 10	Unknown	Track	unavailable	Fiedler et al.
Flight - 10	Unknown	Track	unavailable	Fiedler et al.
Flight - 10	Unknown	Track	unavailable	Fiedler et al.
Flight - 10	Unknown	Track	unavailable	Fiedler et al.
Flight - 10	Unknown	Track	unavailable	Fiedler et al.

Black Stork	-	expected	10	LC	34000	BirdLife species range map
Hen Harrier	-	expected	8	LC	370000	BirdLife species range map
Pallid Harrier	-	expected	8	NT	36000	BirdLife species range map
Montagu's Harrier	-	expected	8	LC	540000	BirdLife species range map
Greater Spotted Eagle	-	expected	9	VU	9100	BirdLife species range map
Lesser Spotted Eagle	-	expected	9	LC	79000	BirdLife species range map



# Soaring Bird Sensitivity Map:

A planning tool for wind energy and other sectors

## LOCATIONS BY SPECIES

Name	Peak Count	Presence	SVI	Status	Global population	Source
Saker Falcon	-	expected	6	EN	32700	BirdLife species range map
Lesser Kestrel	-	expected	6	LC	170000	BirdLife species range map
Eastern Imperial Eagle	-	expected	9	VU	9250	BirdLife species range map
Eurasian Hobby	-	expected	6	LC	1200000	BirdLife species range map
Common Kestrel	-	expected	6	LC	8000000	BirdLife species range map
Red-footed Falcon	-	expected	6	NT	550000	BirdLife species range map
Common Crane	-	expected	10	LC	365000	BirdLife species range map
Griffon Vulture	-	expected	10	LC	1000000	BirdLife species range map
Booted Eagle	-	expected	9	LC	253000	BirdLife species range map
Osprey	-	expected	7	LC	750000	BirdLife species range map
European Honey-buzzard	-	expected	7	LC	675000	BirdLife species range map
Short-toed Snake-eagle	-	expected	7	LC	170000	BirdLife species range map
Black Kite	-	expected	8	LC	2625000	BirdLife species range map
Long-legged Buzzard	-	expected	7	LC	274000	BirdLife species range map



# Soaring Bird Sensitivity Map:

A planning tool for wind energy and other sectors

## DISCLAIMERS

BirdLife International makes no warranties or representations, express or implied, regarding the use of the material appearing on in this report with regard to its correctness, reliability, accuracy, or otherwise. The material and geographic designations in this report do not imply the expressions of any opinion whatsoever on the part of BirdLife International concerning the legal status of any country, territory or area, nor concerning the delimitation of its frontiers or boundaries. Neither BirdLife International nor its affiliated or related entities or its content providers shall be responsible or liable to any person, firm or corporation for any loss, damage, injury, claim or liability of any kind or character based on or resulting from any information contained in this report. BirdLife International may update or make changes to the data provided at any time without notice; however, BirdLife International makes no commitment to update the information contained therein.

## Errors and Omissions

BirdLife International endeavours to maintain accurate and up-to-date data at all times. However, if errors or omissions are identified, the user should notify BirdLife International so that they can be corrected in future releases of the data. Users can contact BirdLife International using the details below. Users can contact BirdLife International at [MSBtool@birdlife.org](mailto:MSBtool@birdlife.org)





## Soaring Bird Sensitivity Map: A planning tool for wind energy and other sectors

### SEARCH SUMMARY

Masder

10km

Countries: Jordan

Centroid: N31.870 E36.210 with 10 km buffer

Combined Sensitivity: Potential (0)

0 soaring bird species observed while a further 25 soaring bird species are thought to occur in this area.

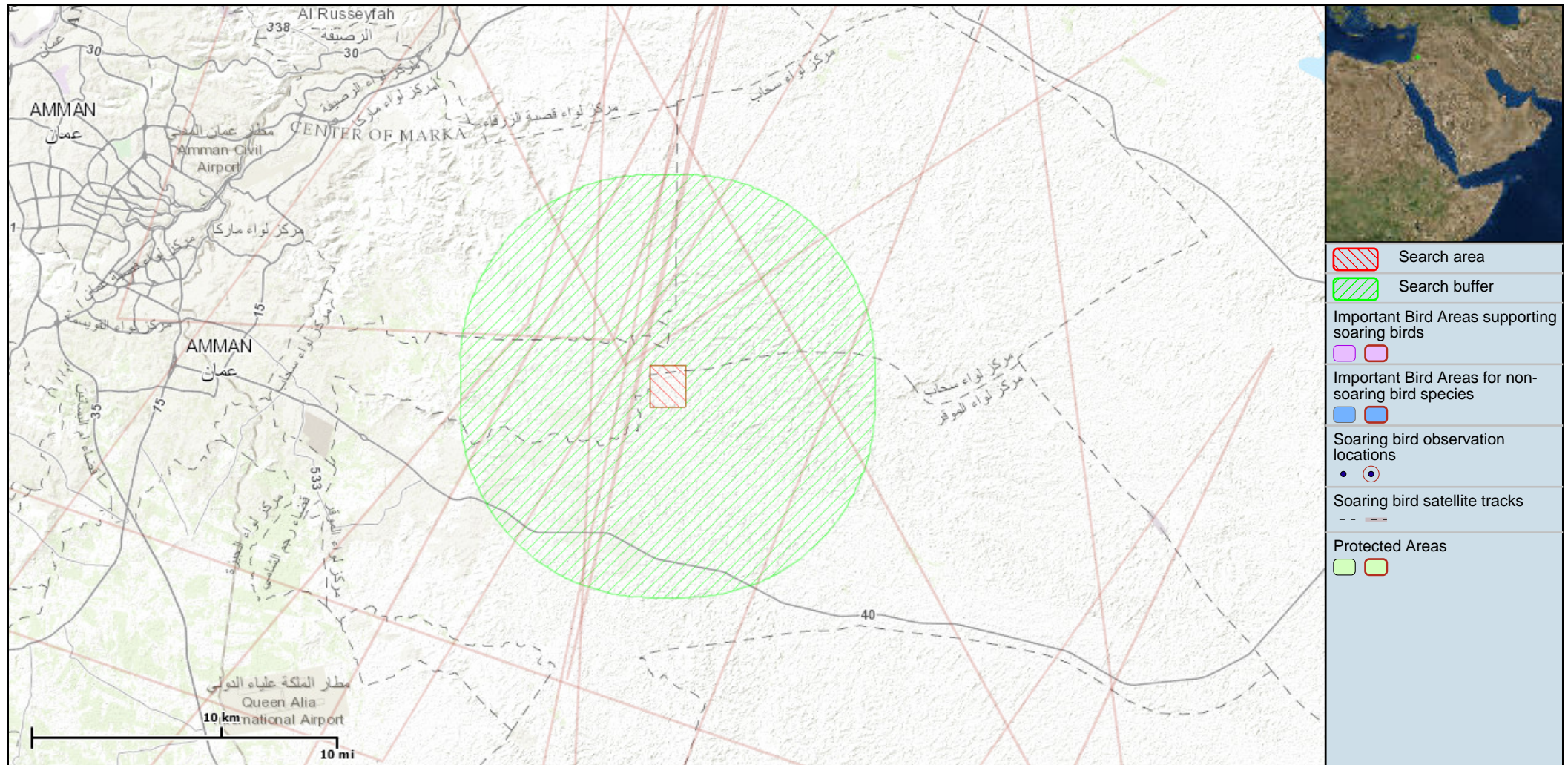
0 soaring bird observation locations.

0 IBAs supporting soaring birds plus a further 0 IBAs for non-soaring bird species.

0 protected sites.

10 satellite tracked migratory routes.

## MAP





## Soaring Bird Sensitivity Map: A planning tool for wind energy and other sectors

### GUIDANCE ON INTERPRETING SEARCH RESULTS

For each search that a user performs, the tool calculates a sensitivity value based on the available soaring bird data and assigns the location to one of six sensitivity categories (defined in more detail below). This calculation takes into account the proportion of each species' global population present, the global conservation status (IUCN Red List) of each species and the inherent collision vulnerability of each species based on their morphology and flight behaviour.

Information for this region is incomplete and an appropriate Environmental Impact Assessments (EIA) should always be undertaken to fully assess the sensitivity of a site. Further information on the underlying methodology can be found in the Instructions section of the web tool.

#### Sensitivity category: UNKNOWN

There are insufficient soaring bird data on which to base a sensitivity score. This should not, however, be interpreted as meaning that a site has no or low sensitivity.

#### Sensitivity category: POTENTIAL

A small number of soaring bird records exist within the defined search area suggesting that the site could be sensitive.

#### Sensitivity category: MEDIUM and HIGH

Soaring bird species are known to be present in significant numbers. Caution advised as development at this location may result in significant impacts on the populations of species present. Development may not be appropriate at or near to this location or may be appropriate only if special mitigation measures are put in place.

#### Sensitivity category: VERY HIGH and OUTSTANDING

Soaring bird species are known to be present in very significant numbers. Caution advised as development at this location may result in considerable impacts on the populations of species present. Wind energy development is unlikely to be appropriate at or near to this location.



# Soaring Bird Sensitivity Map:

A planning tool for wind energy and other sectors

## SPECIES (25)

Name	Peak Count	Presence	SVI	Status	Global population	Source
Lesser Kestrel	-	expected	6	LC	170000	BirdLife species range map
Bonelli's Eagle	-	expected	9	LC	10000	BirdLife species range map
Eastern Imperial Eagle	-	expected	9	VU	9250	BirdLife species range map
Steppe Eagle	-	expected	9	LC	160000	BirdLife species range map
White Stork	-	tracked	10	LC	510000	Fiedler et al.
Black Stork	-	expected	10	LC	34000	BirdLife species range map
Hen Harrier	-	expected	8	LC	370000	BirdLife species range map
Pallid Harrier	-	expected	8	NT	36000	BirdLife species range map
Montagu's Harrier	-	expected	8	LC	540000	BirdLife species range map
Greater Spotted Eagle	-	expected	9	VU	9100	BirdLife species range map
Lesser Spotted Eagle	-	expected	9	LC	79000	BirdLife species range map
Saker Falcon	-	expected	6	EN	32700	BirdLife species range map
Eurasian Sparrowhawk	-	expected	6	LC	4000000	BirdLife species range map
Peregrine Falcon	-	expected	6	LC	500000	BirdLife species range map
Eurasian Hobby	-	expected	6	LC	1200000	BirdLife species range map
Common Kestrel	-	expected	6	LC	8000000	BirdLife species range map



# Soaring Bird Sensitivity Map:

A planning tool for wind energy and other sectors

## SPECIES (25)

Name	Peak Count	Presence	SVI	Status	Global population	Source
Red-footed Falcon	-	expected	6	NT	550000	BirdLife species range map
Common Crane	-	expected	10	LC	365000	BirdLife species range map
Griffon Vulture	-	expected	10	LC	1000000	BirdLife species range map
Booted Eagle	-	expected	9	LC	253000	BirdLife species range map
Osprey	-	expected	7	LC	750000	BirdLife species range map
European Honey-buzzard	-	expected	7	LC	675000	BirdLife species range map
Short-toed Snake-eagle	-	expected	7	LC	170000	BirdLife species range map
Black Kite	-	expected	8	LC	2625000	BirdLife species range map
Long-legged Buzzard	-	expected	7	LC	274000	BirdLife species range map



# Soaring Bird Sensitivity Map: A planning tool for wind energy and other sectors

## SATELLITE TRACKS (10)

Count	Species	Source
10	White Stork	Fiedler et al.



# Soaring Bird Sensitivity Map:

A planning tool for wind energy and other sectors

## LOCATIONS BY SPECIES

Name	Peak Count	Presence	SVI	Status	Global population	Source
Lesser Kestrel	-	expected	6	LC	170000	BirdLife species range map
Bonelli's Eagle	-	expected	9	LC	10000	BirdLife species range map
Eastern Imperial Eagle	-	expected	9	VU	9250	BirdLife species range map
Steppe Eagle	-	expected	9	LC	160000	BirdLife species range map
White Stork	-	tracked	10	LC	510000	Fiedler et al.

Name	SI	Type	Distance	Source
Flight - 10	Unknown	Track	unavailable	Fiedler et al.
Flight - 10	Unknown	Track	unavailable	Fiedler et al.
Flight - 10	Unknown	Track	unavailable	Fiedler et al.
Flight - 10	Unknown	Track	unavailable	Fiedler et al.
Flight - 10	Unknown	Track	unavailable	Fiedler et al.
Flight - 10	Unknown	Track	unavailable	Fiedler et al.
Flight - 10	Unknown	Track	unavailable	Fiedler et al.
Flight - 10	Unknown	Track	unavailable	Fiedler et al.
Flight - 10	Unknown	Track	unavailable	Fiedler et al.
Flight - 10	Unknown	Track	unavailable	Fiedler et al.

Black Stork	-	expected	10	LC	34000	BirdLife species range map
-------------	---	----------	----	----	-------	----------------------------



# Soaring Bird Sensitivity Map:

A planning tool for wind energy and other sectors

## LOCATIONS BY SPECIES

Name	Peak Count	Presence	SVI	Status	Global population	Source
Hen Harrier	-	expected	8	LC	370000	BirdLife species range map
Pallid Harrier	-	expected	8	NT	36000	BirdLife species range map
Montagu's Harrier	-	expected	8	LC	540000	BirdLife species range map
Greater Spotted Eagle	-	expected	9	VU	9100	BirdLife species range map
Lesser Spotted Eagle	-	expected	9	LC	79000	BirdLife species range map
Saker Falcon	-	expected	6	EN	32700	BirdLife species range map
Eurasian Sparrowhawk	-	expected	6	LC	4000000	BirdLife species range map
Peregrine Falcon	-	expected	6	LC	500000	BirdLife species range map
Eurasian Hobby	-	expected	6	LC	1200000	BirdLife species range map
Common Kestrel	-	expected	6	LC	8000000	BirdLife species range map
Red-footed Falcon	-	expected	6	NT	550000	BirdLife species range map
Common Crane	-	expected	10	LC	365000	BirdLife species range map
Griffon Vulture	-	expected	10	LC	1000000	BirdLife species range map
Booted Eagle	-	expected	9	LC	253000	BirdLife species range map
Osprey	-	expected	7	LC	750000	BirdLife species range map



# Soaring Bird Sensitivity Map:

A planning tool for wind energy and other sectors

## LOCATIONS BY SPECIES

Name	Peak Count	Presence	SVI	Status	Global population	Source
European Honey-buzzard	-	expected	7	LC	675000	BirdLife species range map
Short-toed Snake-eagle	-	expected	7	LC	170000	BirdLife species range map
Black Kite	-	expected	8	LC	2625000	BirdLife species range map
Long-legged Buzzard	-	expected	7	LC	274000	BirdLife species range map



# Soaring Bird Sensitivity Map:

A planning tool for wind energy and other sectors

## DISCLAIMERS

BirdLife International makes no warranties or representations, express or implied, regarding the use of the material appearing on in this report with regard to its correctness, reliability, accuracy, or otherwise. The material and geographic designations in this report do not imply the expressions of any opinion whatsoever on the part of BirdLife International concerning the legal status of any country, territory or area, nor concerning the delimitation of its frontiers or boundaries. Neither BirdLife International nor its affiliated or related entities or its content providers shall be responsible or liable to any person, firm or corporation for any loss, damage, injury, claim or liability of any kind or character based on or resulting from any information contained in this report. BirdLife International may update or make changes to the data provided at any time without notice; however, BirdLife International makes no commitment to update the information contained therein.

## Errors and Omissions

BirdLife International endeavours to maintain accurate and up-to-date data at all times. However, if errors or omissions are identified, the user should notify BirdLife International so that they can be corrected in future releases of the data. Users can contact BirdLife International using the details below. Users can contact BirdLife International at [MSBtool@birdlife.org](mailto:MSBtool@birdlife.org)

