



Mocuba Solar PV Project

**Simplified Land Use and Compensation
Plan (SLUCP)**

2015.11.27 (English version)



TABLE OF CONTENTS

TERM GLOSSARY	5
ACRONYM AND ABBREVIATION LIST	6
1 INTRODUCTION.....	7
2 PROJECT DESCRIPTION	8
3 BASIC AND GUIDING PRINCIPLES FOR A SIMPLIFIED COMPENSATION PLAN	12
4 LEGAL FRAMEWORK	13
4.1 THE CONSTITUTION OF THE REPUBLIC.....	13
4.2 REGULATIONS ON THE RESETTLEMENT PROCESS RESULTING FROM ECONOMIC ACTIVITIES.....	14
4.3 TECHNICAL GUIDELINE FOR THE ELABORATION AND IMPLEMENTATION OF THE RESETTLEMENT PLANNING PROCESS	14
4.4 DIRECTIVE ON THE EXPROPRIATION PROCESS	14
4.5 ENVIRONMENTAL LAW	15
4.6 REGULATION ON THE ENVIRONMENTAL IMPACT ASSESSMENT PROCESS	15
4.7 GENERAL DIRECTIVE FOR PUBLIC PARTICIPATION IN THE ENVIRONMENTAL IMPACT ASSESSMENT PROCESS	15
4.8 LAND LAW AND LAND LAW REGULATION	15
5 CENSUS RESULTS AND ASSETS INVENTORY.....	17
5.1 AFFECTED POPULATION	17
5.2 VULNERABLE GROUPS.....	18
5.3 FARM PLOTS (MACHAMBAS)	19
5.4 FRUIT TREES	23
5.5 ANCILLARY STRUCTURES.....	26
6 ELIGIBILITY CRITERIA AND RIGHTS CHART	28
7 ASSESSMENT PROCESS	30

7.1	ANNUAL CROPS	30
7.2	FRUIT TREES	30
7.3	ANCILLARY STRUCTURES	30
8	IMPLEMENTATION STRUCTURE AND RESPONSIBILITIES	31
8.1	IMPLEMENTATION STRUCTURE	31
8.2	BIDDER’S RESPONSIBILITIES	32
8.3	DISPUTE RESOLUTION COMMITTEE (DRC) RESPONSIBILITIES	33
8.4	DISTRICT GOVERNMENT RESPONSIBILITIES	34
8.5	COMMUNITY LEADERSHIP RESPONSIBILITIES	35
9	COMPENSATION PAYMENT	36
10	CLAIMS AND DISPUTE RESOLUTION	38
10.1	CLAIM REGISTRATION AND DOCUMENT PROCESS	38
10.2	INSTANCES OF CLAIM AND DISPUTE RESOLUTION	39
11	INDICATIVE BUDGET	41
12	IMPLEMENTATION SCHEDULE	43
13	CONSIDERATIONS AND FINAL RECOMMENDATIONS	44

Figure List

Figure 1.	Delimitation frames of the Project area (DUAT area)	9
Figure 2	Typical Photovoltaic Power Station.....	10
Figure 3.	Project location	11
Figure 4.	Farm plots affected by the Project (DUAT area and access road.....	21
Figure 5.	Pumpkin farm plot within the Project area.....	22
Figure 6.	Manioc farm plot within the Project area.....	23
Figure 7.	Mango trees within the Project area.	25
Figure 8.	Banana farm plot within the Project area.	26
Figure 9.	Wells inside the Project area	27
Figure 10.	Recommended implementation structure	32
Figure 11.	Schematic representation of the claim process	40
Figure 12.	Implementation Schedule	43

Table List

Table 1 Project Area Approximate Coordinates	8
Table 2. Breakdown of the population affected by age group and gender	17
Table 3. Vulnerable situations reported	18
Table 4. Number of farm plots per household.....	19
Table 5. Farm plot use	19
Table 6. Most representative agricultural crops	22
Table 7. Fruit trees lost to the Project.....	24
Table 8. Ancillary structures forfeited to the project	26
Table 9. Rights Chart.....	29
Table 10. Indicative Compensation Budget.....	41

TERM GLOSSARY

Household	Group of individuals linked by family legal relations, living in communal housing and sharing a household economy (definition of the National Institute of Statistics of Mozambique). Under this document, the household designation is also used to indicate the families living in adjacent neighbourhoods to the Project area and who have land use rights (inheritance or through customary law) or property within this area.
Project Area	The entire area of the direct footprint of the Project, equivalent to the DUAT area (126 ha) and the partial protection zone of the access road.
Census and Asset Inventory	Field research performed to identify and determine the number of affected people and their property, according to National legislation or Internationally accepted good practice. This is in terms of a full and precise headcount of individuals, families, land, business and other assets on the ground that are affected by the Project. The definition also includes the eligibility criteria for compensation and transfer of assets and other agreements emanating from consultations with affected communities and local leaders in the Project area.
Head of Household	Household member recognized by the other members as household head, whose regular presence in the house and whose authority is essential in making decisions concerning the household.
Local Community	Grouping of families and individuals living in a territorial area at the local level. Who have an interest in safeguarding common interests through the protection of residential areas, agricultural areas (whether cultivated or fallow), forests, sites of cultural importance, pastures, water sources, and areas of potential community expansion.
Eligibility Criteria	Criteria for the identification of parties eligible for compensation, based on the nature of the Project impact on the affected parties in question and the types of rights that affected parties have in relation to affected land and property.
Economic Displacement	Loss of income sources or means of livelihood resulting from the acquisition of land or the obstruction of access to natural resources (land, water or forests) as a result of Project construction or operation (including the construction of associated infrastructure).
Physical Displacement	Loss of housing and real estate resulting from land acquisition associated with Project induced resettlement.
Use Rights and Utilization of Land	Legal rights that naturalized persons and local communities acquire in relation to land as per the requirements and limitations of the Land Law (Law 19/97 of October 1st).
Vulnerable Groups	Encompass people who on grounds of gender, age, physical or mental disability, economic disadvantage or social status may be more adversely affected (in relation to a specific project and its impacts) as compared to other members of society and who may be limited with regard to their ability to claim or take advantage of the assistance and benefits related to the project.
Special License	Document authorizing the performance of all economic activities in the areas of full or partial protection.
Farm Plot	Local agricultural land associated with subsistence farming.
Rights Matrix	Identifies the categories of persons eligible for compensation damages and the specific rights for each category within the scope of these compensation damages. The rights defined for each category of eligible persons correspond to compensatory measures which will vary depending on the type of losses incurred.
Claim Registration and Dispute Resolution Mechanism	Administrative mechanisms and processes established in order to allow people affected by the Project to submit grievances associated with the compensation process, or other aspects related to the acquisition and expropriation of their

	property, and which provides for the evaluation of claims and the fair, equitable and transparent mediation of potential disputes resulting therein.
Moratorium	Deadline for land occupation in an area that is acquired for Project development. All persons who have proven occupation of land after this date are not eligible for any compensation/damages. Normally, the moratorium is declared after the completion of the census and asset inventory. In Mozambique, given that the land is state property, the declaration of the moratorium is seen as an administrative act, which should be practiced by a competent State authority. However, the declaration of the moratorium is not expressly defined by law.
Affected Parties	Any person or group of people who, as a result of the implementation of a project, loses the right to own use or benefit from infrastructure, land, annual crops or perennials and trees, or any other fixed or movable assets in whole or in part, permanently or temporarily.

ACRONYM AND ABBREVIATION LIST

H	Household
EIA	Environmental Impact Assessment
IC	Identity Card
HH	Head of Household
DINOTER	Direcção Nacional de Ordenamento Territorial e Reassentamento (National Directorate for Land Planning and Resettlement)
ha	Hectare
MZM	Metical
NGO	Non-Governmental Organization
APs	Affected Parties
CSR	Corporate Social Responsibility Plan
GIS	Geographic Information System
SPSS	Statistical Package for Social Sciences
SEZ	Special Economic Zone

1 INTRODUCTION

This Simplified Land Use and Compensation Plan (SLUCP), intends to set out a plan to compensate all parties who are economically displaced by the development of the Photovoltaic Power Station in Mocuba, Zambezia Province, Mozambique, in accordance with the provisions of Mozambican law. The Project is the result of a partnership that involves Electricity of Mozambique (EDM), Scatec SA (Pty) Ltd¹, and the Norwegian Investment Fund (Norfund)².

The Project has been classified by MITADER as a category B project and it proposes to build and operate a 30MWac solar PV facility in an area of 126 hectares located near the current substation in Mocuba, about 13km from the city center. The Project is thus located in part of the Special Economic Zone (SEZ) of Mocuba, established by the Government of Mozambique in May 2014.

Field surveys have confirmed that Project development will not result in the physical displacement of any local communities. The analysis of the Project impacts, however, indicates that the development will result in economic displacement and therefore, according to Mozambican law and aligned to best international practices, mitigation of these impacts will be achieved through a Compensation Plan, the details of which are presented in this report.

¹ A subsidiary of Solar Scatec AS, a company specialized in the use of solar energy based in Norway with offices in several countries (including South Africa, The United States, Honduras and Jordan)

² An agency that promotes investment in sustainable projects in developing countries and that has a strong presence in Southern and Eastern Africa, with offices in Johannesburg, Maputo and Nairobi.

2 PROJECT DESCRIPTION

The aim of developing a Photovoltaic Power Station in Mocuba is to expand the production of renewable energy in Mozambique, diversify energy supply and stimulate private investment in this sector.

The Project is a part of the EDM strategy of developing a renewable energy exploration program through implementing energy production projects linked to the national network, a strategy that aims to achieve the following objectives:

- Security of energy supply;
- Diversification of production options;
- Rural electrification; and
- Environmental sustainability.

In this context, EDM signed on December 22, 2014, a Memorandum of Understanding with Solar Scatec and Norfund to assess the feasibility of establishing a PV power station in Mocuba, in the center-north zone of Mozambique. The energy produced will be bought by EDM, under a Power Purchase Agreement (PPA) for 25 years.

As stated above, the Project will be implemented in an area of 126 hectares located near the current substation in Mocuba, about 13km from the city center. *Table 1* below shows the approximate coordinates of the four vertices that define the Project location.

Table 1 Project Area Approximate Coordinates

Point	Latitude	Longitude
A	16°49'11.88"S	37° 2'3.37"E
B	16°49'13.78"S	37° 2'49.65"E
C	16°49'47.97"S	37° 2'36.23"E
D	16°49'42.29"S	37° 1'56.64"E

Figure 3 illustrates the Project area location, also showing the limits of the DUAT area.



Figure 1. Delimitation frames of the Project area (DUAT area)

From a technical point of view, the Project involves the construction of a photovoltaic power station composed of sets of solar panels mounted on metal substructures fixed to the ground. The panels will be fitted with a tracker system that allows them to follow the Sun, thereby optimizing the production of energy.

The solar energy harvesting stations use photovoltaic cells to capture and convert the Sun's energy into electricity through a process referred to as "photovoltaic effect". The photovoltaic cells are made of silicon which acts as a semiconductor, creating an electrical current. Photovoltaic cells are grouped into modules. The grouping of modules placed in the same support structure form a solar panel. When sunlight falls with enough energy on these structures it produces a stream of electrons, thereby enabling the solar panels to create usable electrical energy.

The various solar panels are grouped into larger units (arrays). The photovoltaic power station in Mocuba will have a total of 494 sets of solar panels (arrays) installed, with a 40MW production capacity. The figure below illustrates a typical photovoltaic power station.



Figure 2 Typical Photovoltaic Power Station

In addition to the sets of solar panels the following equipment will be installed:

- Load monitoring equipment for the solar panels;
- Measuring equipment for meteorological factors (rain, intensity and direction of wind, solar radiation, humidity and temperature);
- Inverters and associated air conditioning equipment; and
- A 20 kVA diesel generator to support the safety and monitoring systems in case of power failure.

A dirt road providing access to the Project site will also be built. In addition permanent support infrastructures will include:

- An office building; and
- A 2.5 meter high electrified fence around the power station perimeter and its respective access gates and lighting at the main entrance.

Figure 3 (next page) illustrates the location of the Project area in relation to the city of Mocuba. The DUAT area limits are clearly marked.

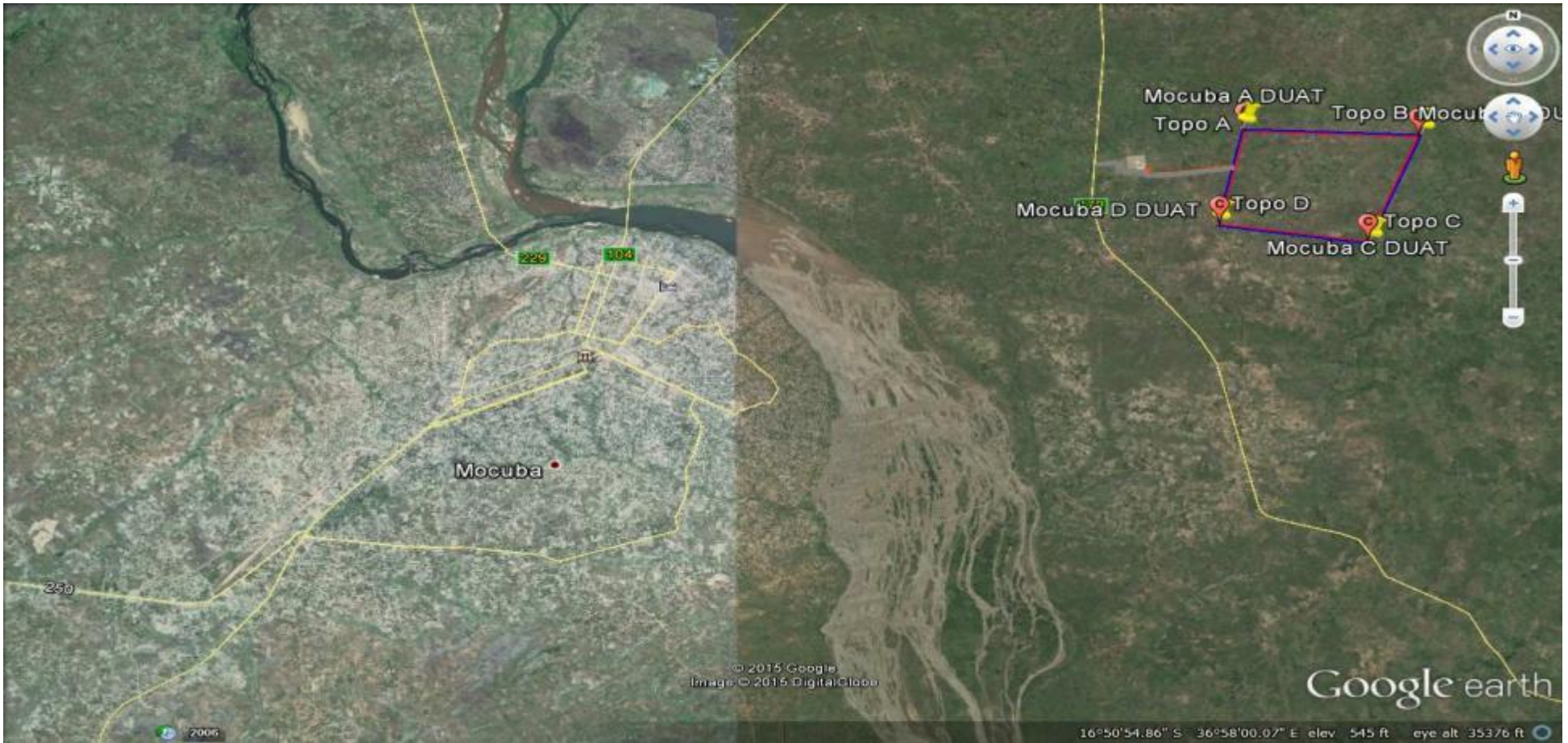


Figure 3. Project location

3 BASIC AND GUIDING PRINCIPLES FOR A SIMPLIFIED COMPENSATION PLAN

As mentioned above, the Project to develop a photovoltaic power station in Mocuba was classified as a category B project and it will form part of an area belonging to the Special Economic Zone (SEZ) in Mocuba, established by the Government of Mozambique in May 2014.

The Project will not result in any physical displacement of people in the surrounding areas, and thereby will not demand any resettlement action. The Project will however impact on agricultural land and some associated infrastructure, so there will be loss of rights of use and occupation of land and loss of property and improvements.

In this context, this Simplified Compensation Plan (SCLUP) aims to mitigate economic displacement situations, resulting from the implementation of the Project and aims to ensure the protection of the legitimate interests of the Affected Parties (APs) in order to ensure that any losses resulting from the implementation thereof are compensated fairly.

The SCLUP must meet the following key objectives:

1. Identify economic displacement situations generated by the Project and propose fair and equitable compensation measures;
2. Set eligibility criteria for compensation measures;
3. Develop a rights framework typifying the losses induced by the Project and propose adequate compensation;
4. Propose claim registration and dispute resolution mechanisms;
5. Define organizational responsibilities for the implementation of the compensatory measures proposed;
6. Prepare an indicative budget and implementation schedule; and
7. Propose monitoring and assessment mechanisms for the implementation phase of this SCLUP.

4 LEGAL FRAMEWORK

The Mozambican Legal Order contains a number of relevant legal instruments for the involuntary displacement (physical or economic) of people. Particular attention will be given to the following standards:

- The Constitution of the Republic;
- Regulations on the Resettlement Process Resulting from Economic Activities (Decree No. 31/2012 of August 8th);
- Technical Guideline for the Elaboration and Implementation of the Resettlement Planning Process (Ministerial Decree 156/2014 of September 19th);
- Directive on the Expropriation Process for Territorial Planning Effects (Ministerial Decree 181/2010 of November 3rd);
- Environment Law (Law No. 20/97 of October 1st);
- Regulation on the Environmental Impact Assessment Process (Decree No. 45/2004 of September 29th);
- General Directive for Public Participation in the Environmental Impact Assessment Process (Ministerial Decree No. 130/2006 of July 19th); and
- Land Law (Law No. 19/97 of October 1st) and Land Law Regulation (Decree No. 66/98 of December 8th).

4.1 THE CONSTITUTION OF THE REPUBLIC

One of the fundamental principles of Mozambican land law is that the land has been state owned since national independence in 1975. This principle is enshrined in the constitution and has survived the political and economic transformations that have occurred in Mozambique since the late 1980s. In relation to the market economy it represents the transitional period of a socialist-oriented development model.

Consecrating this principle, the current Constitution (2004), while recognizing the enjoyment of the right of use and exploitation of land for all citizens, expressly states that the land is state property, absolutely prohibiting its sale or taxation on any account, including seizure or mortgage (Article 109 of the Constitution). Consequently, the State reserves the right and responsibility to determine the conditions of use and exploitation of natural resources and land, in order to safeguard land as a national interest (Articles 102 and 110 of the Constitution)³.

³ The constitutional texts of 1975 and 1990 consecrated the same principle of state-owned land.

Without prejudice to this principle, however, the Constitution of the Republic also recognizes local communities as holders of rights to the land, namely protecting the rights acquired through inheritance or occupation, provided that such rights do not fall on land whose use has been legally assigned to another person or entity (Article 111 of Constitution).

4.2 REGULATIONS ON THE RESETTLEMENT PROCESS RESULTING FROM ECONOMIC ACTIVITIES

The recent Decree No. 31/2012 of August 8th approves the Regulations on the Resettlement Process Resulting from Economic Activities, and consists of a set of basic rules and principles on the resettlement process. These are aimed at ensuring that the population affected by economic activities of the public or private sector result in a better quality of life or social equity, and take into account the sustainability of physical, environmental, social and economic aspects. The Decree also makes provision for the creation of the Monitoring and Resettlement Supervision Technical Committee, a multi-sectoral body providing technical advice to the Minister responsible for overseeing the Project affected area.

This regulation also establishes the procedures that must be met to govern the resettlement plan, as well as the approach that will be adopted for public consultation.

4.3 TECHNICAL GUIDELINE FOR THE ELABORATION AND IMPLEMENTATION OF THE RESETTLEMENT PLANNING PROCESS

Ministerial Decree No. 156/2014 of September 19th clarifies and expands the provisions of the Regulations on the Resettlement Process Resulting from Economic Activities, recommending the phasing of the process and providing accurate information for each of the three recommended phases. Where applicable, the recommendations stipulated in the Decree in regard to situations of economic dislocation will be followed.

4.4 DIRECTIVE ON THE EXPROPRIATION PROCESS

According to the principle of the primacy of public interest, this Directive allows for the expropriation for territorial planning purposes, and establishes the principles to be used in the calculation of their compensation. In turn, Ministerial Diploma 156/2014 of September 19th (Technical Guideline for the Elaboration and Implementation of the Resettlement Planning Process) expressly provides in Article 1, for the applicability of the Expropriation Directive relating to resettlement processes. Although it is part of the suite of Mozambican legislation relating to the regulation of displacement situations (physical and economic), this piece of legislation is not necessarily applicable to the Project. It does however contain some

formulas that would assist in the assessment of the value of structures that may be impacted by the Project.

4.5 ENVIRONMENTAL LAW

The Environmental Law, approved by the Mozambican Parliament in July 1997 and published in the Government Gazette on October 1st of that year, aims to establish the legal framework for the proper use and environmental management to ensure sustainable development. The law applies to all public and private activities that may directly or indirectly have an impact on the environment (including socioeconomic environment). It establishes the obligation to undertake mitigation measures to minimize the impacts induced by development projects.

4.6 REGULATION ON THE ENVIRONMENTAL IMPACT ASSESSMENT PROCESS

According to this Regulation, the granting of an Environmental License is a prerequisite for the implementation of any Project. The Regulation stipulates the procedure to be followed in order to obtain this License.

4.7 GENERAL DIRECTIVE FOR PUBLIC PARTICIPATION IN THE ENVIRONMENTAL IMPACT ASSESSMENT PROCESS

This Directive defines the public participation process, which is considered an integral part of the EIA process for activities classified as Category A. The Directive stipulates the responsibility of the developer to ensure that public participation is undertaken during all phases of a Project.

4.8 LAND LAW AND LAND LAW REGULATION

The Land Law (Law No. 19/97 of October 1st) implements the constitutional principles and the recommendations of the National Land Policy. Thus, the law reiterates that the land belongs to the State, however, natural, legal persons and communities can acquire use and exploitation rights to land. The Land Law sets the terms of reference for the establishment, exercise, modification, transfer and termination of the land-use right (called "DUAT").

The law provides three ways of acquiring the DUAT⁴:

- Occupation of land by individuals and local communities, according to the rules and customary practices, as long as they are not contrary to the Constitution;
- Occupation of land by individuals who have been using the land for at least ten years; and

⁴ Article 12 of the Land Law

- By means of an application to use land submitted by natural or legal persons to the State.

There are some restrictions regarding the acquisition, use and exploitation of land rights. Thus, these rights cannot be acquired in protected areas; however, special licenses may be issued for the exercise of specific activities in terms of Article 9 of the Land Law.

Regulations associated with the Land Law were approved by Decree No. 66/98 of December 8th. These regulations reiterates that, under the law, the absence of a written title shall not affect the validity of the right of use and exploitation of land and the rights acquired by occupation in traditional ways (which is considered as being fully legitimate).

5 CENSUS RESULTS AND ASSETS INVENTORY

In order to identify the circumstances of economic displacement caused by the implementation of the Project, Impacto Lda, in conjunction with the local authorities (the District Services of the Agriculture and Land Registry and the Regulated Bivi), conducted a census and net asset inventory involving all the households that reported owning property, or having economic interests, within the area of direct influence of the Project (this included agricultural land, fruit trees, auxiliary structures, etc.). The census and asset inventory was conducted by interview teams trained for this specific purpose, under the guidance of a socio-economist and a field supervisor from Impacto.

Questionnaires were used to interview affected households (using electronic forms submitted with programmed Samsung tablets) and their assets were recorded and georeferenced with the help of GPS technology. A photographic record was captured of the heads of affected households and their identity cards. The results of the census and asset inventory were recorded in a database which was set up for this project. The data was captured with CSPRO support and the analysis was conducted with IBM SPSS support.

5.1 AFFECTED POPULATION

Two hundred and eight (208) households were registered in the Project area. These households received numbered registration cards which can be used to identify them as affected households who are eligible for compensatory measures. The eligibility focuses on the household itself and not on the head of household (or any other household member interviewed, in case of unavailability of the head of household). The total number of people who make up the 208 households was 1,283. This corresponds to an approximate average of 6 people per household. *Table 2* below shows the breakdown of the population affected by age group and gender.

Table 2. Breakdown of the population affected by age group and gender

Age Groups	Gender		Total
	Masculine	Feminine	
0 – 4	103	76	179
5 – 14	210	228	438
15 – 49	258	271	529
50 – 64	52	42	94
65 +	16	27	43
Total	639	644	1283

As can be seen, and in accordance with the general trend in Mozambique, the affected population is predominantly of a young age, with 617 individuals younger than 15 (48% of

the total population), and the number of women slightly higher than men. Only 43 people (0.03% of the total population) are over 65.

5.2 VULNERABLE GROUPS

During the survey, several vulnerable people were recorded as being part of the 1,283 people who comprising 208 households affected by the Project. *Table 3* below specifies the types of vulnerabilities and the number of cases reported by the respondents (thus potentially reflecting local perceptions). Note, for instance, that not all the elderly (43 in total) were reported as being vulnerable. Annex 4 presents the families which are considered vulnerable.

Table 3. Vulnerable situations reported

Vulnerability Type	Number of Incidents	%
Physical disability	26	8.5
Mental disability	8	3.6
Single mother	33	14.8
Widows	31	13.9
Woman head of household	12	5.4
Orphan child	45	20.2
Elderly (>65 years)	28	12.6
Chronic disease	28	12.6
Miscellaneous disabilities	11	4.9
Total	222	100.0

Indicative values of compensation to be paid (according to the crops and fruit trees present in their respective fields) have been assigned. Annex 4 shows the vulnerabilities of each household.

In accordance with the collected data, it appears that the reported vulnerability index is considerably high (222 people) representing 17.3% of the total population. As can be seen, vulnerability due to social causes plays an important role in all of the situations reported. The most frequent case being represented by orphans (20.2%), single mothers (14.8%) and widows (13.9%). These three categories constitute 48.9% of all vulnerable cases.

Social vulnerabilities do not, however, necessarily mean there is an inability to perform the tasks required for daily survival. Special measures to support this social group should focus on supporting sustainable production.

Physical vulnerabilities usually reduces or prevent a person's capacity to undertake activities to be self-sufficient. The mitigation for this type of vulnerability will have to be considered for each individual case.

If the Sponsors implement a Corporate Social Responsibility Policy (CSR), it is recommended that it contains specific provisions to support households where there are vulnerable people, in particular those whose vulnerability prevents them from continuing with their normal productive activity.

5.3 FARM PLOTS (MACHAMBAS)

232 farm plots were recorded and mapped in the Project area, whose loss will have to be compensated in accordance with the provisions of the law in effect. As can be seen by consulting *Table 4* below, the overwhelming majority of the 208 registered households own only 1 farm plot within the Project area.

Table 4. Number of farm plots per household

Number of farm plots per household	Households	%
1	185	88.9%
2	22	10.6%
3	1	0.5%
Total	208	100.0%

Most registered farm plots (161) are considered active, whether they are cultivated or in preparation for cultivation. There are also 71 fallow fields. In total, the agricultural land area affected by the Project and that will have to be reset through replacement land allocations represents 139.1 hectares (see *Table 5* below).

Table 5. Farm plot use

Type of plot use	Number of farm plots	%	Area (ha)
In use	161	69.4%	99.5
In fallow	71	30.6%	39.6
TOTAL	232	100.0%	139.1

One must point out that 62 of the 208 surveyed households do not currently have a productive activity within the Project area, having only fallow fields. Figure 4 shows, in Google Earth support, the farm plots mapped during the assets inventory.

It should be noted that there are "divided" farm plots, ie fields in which part of the occupied area lies within the area of the DUAT and elsewhere outside the DUAT area. In these cases,

during the implementation phase each case will be negotiated individually. If necessary then a new measurement of the farm area will be undertaken.



Figure 4. Farm plots affected by the Project (DUAT area and access road)

The Project area as well as the rest of the country, is dominated by subsistence agriculture in upland regime carried out in an intercropping system. Normally, several crops are present on the same farm plot.



Figure 5. Pumpkin farm plot within the Project area.

Table 6 shows the most representative crops including the number of households that plant them.

Table 6. Most representative agricultural crops

Crops	Households
Manioc	99
Boer Beans	74
Peanuts	42
Corn	38
Nhemba Beans	38
Sweet Potatoes	12
Jugo Beans	6
Rice	6
Pumpkins	4
Sesame	2
Mapira	2
Tomatoes	2
Sugar Cane	1

Where applicable and beyond the loss of the right of access to land, existing crops will need to be compensated. According to current practice, such compensation will be guided by the guidance values provided in the annual table issued by the Agriculture Services for the Mocuba District (**Appendix 2** of this Plan). For calculation purposes, and in order to benefit households, it is suggested that they be used as the basis of productivity values per hectare and cost per kg of manioc (cassava), the most representative culture in the area.



Figure 6. Manioc farm plot within the Project area.

5.4 FRUIT TREES

1,466 fruit trees were recorded within the Project area. The most representative species are banana plants (978 units, representing 66.7% of the total), mango trees (229 units, 15.6% of the total) and cashew trees (177 units, 12.0% of the total.)

Table 7 shows the registered trees and the number of households to which they belong.

Table 7. Fruit trees lost to the Project

Tree Type	Number of Households	Number of Trees
Banana	44	978
Mango	76	229
Cashew	45	177
Papaya	4	5
Orange	5	9
Guava	5	41
Lemon	2	4
Coconut	5	16
Palm	1	3
Other trees	2	4
Total	189	1,466

In summary, of the 208 registered households, 189 are owners of fruit trees of various species, with 19 households that do not have any fruit trees in the Project area. As is the case of agricultural crops, it is suggested that fruit trees be compensated on the basis of tables referring to compensation prices applicable to the Mocuba District or, in the event of shortcomings in the district tables for the Zambezia Province. In addition, it is suggested that two replacement seedlings be delivered for every tree lost.



Figure 7. Mango trees within the Project area.



Figure 8. Banana farm plot within the Project area.

5.5 ANCILLARY STRUCTURES

Three ancillary structures were mapped within the Project area; these structures are used to support productive activities.

Table 8. Ancillary structures forfeited to the project

Structure Type	Number of structures
Well	2
Porch	1
Total	3

These structures should be assessed by a local assessor and properly compensated.



Figure 9. Wells inside the Project area.

Appendix 1 lists a summary of the Census Results and Assets Inventory, indicating the registered households and providing brief information about them.

6 ELIGIBILITY CRITERIA AND RIGHTS CHART

For this particular Project, and in view of the information collected during the assets inventory with regard to the type of losses that will be recorded, the categories of Affected Parties eligible for compensation measures are as follows:

- Holders of rights to agricultural land located within the Project area;
- Owners of agricultural crops located within the Project area;
- Owners of improvements located within the Project area;
- Owners of fruit trees located within the Project area.

The Table below summarizes the rights chart applicable to the Project.

Table 9. Rights Chart

Type of Loss	Compensation Rights	Responsibility
Total or partial loss of agricultural land (<i>land plots</i> or parts of <i>land plots</i>):	<ul style="list-style-type: none"> Agricultural land forfeited to the Project will be compensated in kind (land for land) by alternative allocation of land of equal or higher quality than the lost land. The Project will cover deforestation costs and preparation of new land / farm plots in transfer sites. 	District Government Bidder
Loss of crops	<ul style="list-style-type: none"> Where possible, farmers will be informed in advance to allow the harvest of annual crops before relocation. Any loss of crop will be compensated on a cash basis, based on the annual tables provided for this purpose by the Agriculture Provincial Services, adjusted, where appropriate, for the Total Replacement Value, as defined by Performance Standard 5 of the IFC. 	Bidder
Loss of fruit trees	<ul style="list-style-type: none"> Monetary compensation, according to the annual tables provided for this purpose by the Agriculture Provincial Services. Assignment of seedlings for planting in sufficient quantity to compensate affected parties for the loss of fruit trees (2 seedlings per lost tree). 	Bidder
Loss of ancillary structures (farm plot sheds, wells, fences, etc.)	<ul style="list-style-type: none"> Provision of replacement structures by the Project or payment of monetary compensation and / or materials for self-construction. 	Bidder

It should be noted that the current legislation gives considerable responsibilities to District Governments, namely the responsibility to find and assign land to be replaced. During the fieldwork, it was found that the government of the District of Mocuba showed some difficulty in regards to this issue, since it is the first time that it is called to operate under the new legislative framework. Under no circumstances, however, may the bidder take over this responsibility. The bidder must therefore sensitize the District Government to this matter and, if necessary, appeal to the Provincial Government, since the National Directorate for Land Planning and Resettlement (who supervises the cases of physical and economic involuntary displacement of people) is in the process of forming Provincial Resettlement Committees.

7 ASSESSMENT PROCESS

This chapter describes the criteria and procedures to be used in the implementation of this Simplified Compensation and Land Use Plan (SCLUP), according to the defined Chart of Rights.

7.1 ANNUAL CROPS

Compensation for loss of annual crops will be monetary. As mentioned above, the amount of compensation to be awarded for this type of loss will be calculated based on the Compensation Table applied in the Mocuba District (**Appendix 2**) and taking manioc as the reference crop; this crop has the highest productivity rate per hectare of all the crops referenced in the area of influence of the Project. The formula applied to calculate the amount of damages / compensation per crop is as follows:

$$\text{Production per hectare/Area occupied by crop (m}^2\text{) x price of crop per kg}$$

The above criteria corresponds to a value of 55,000 MZM per hectare, such as expressed in the Compensation Table in force for the Mocuba District.

7.2 FRUIT TREES

Compensation for loss of fruit trees will be monetary. The amount of compensation to be awarded for this type of loss will be calculated based on the Compensation Table applied in the Mocuba District (**Appendix 2**) and where this is missing, the annual Table for the same purpose produced by the Agriculture Provincial Services of Zambezia.

The formula applied to calculate the amount of damages / compensation per crop is as follows:

$$\text{Number of trees (per type) x unit price per tree type}$$

Monetary compensation for the loss of fruit trees should be complemented by the provision of two seedlings for each tree lost to the Project.

7.3 ANCILLARY STRUCTURES

The ancillary structures affected by the Project should be assessed by a local assessor and properly compensated.

8 IMPLEMENTATION STRUCTURE AND RESPONSIBILITIES

8.1 IMPLEMENTATION STRUCTURE

In Mozambique it is common practice that the responsibility for planning and implementing Compensation Plans belongs to the Bidder of the Project. Given the sensitive nature of these processes, however, the State reserves the right to monitor and follow them closely, and therefore certain state institutions play an extremely important role. The District Government takes on a key role under the current regulatory framework, namely by monitoring the entire process, the allocation of replacement land and the approval of the Compensation Plan.

Figure 10 below shows the recommended implementation structure. Note, however, that the specific responsibilities of the various government bodies involved in the process, will have to be defined and agreed with their respective bodies, who have the prerogative to decide the level of active participation they allow for you. For the management of complaints and / or any disputes that may arise in the process, we recommend the establishment of a Dispute Resolution Committee, that should include staff from the Bidder, representatives of the District Government and representatives of the relevant community leaders.

To ensure more transparency to the process, it is recommended as an option, the involvement of an independent local NGO that can monitor the compensation payment to be awarded to the Affected Parties. If the Bidder so decides, the Consultant can assist him in the process of identifying an NGO capable of implementing such monitoring.

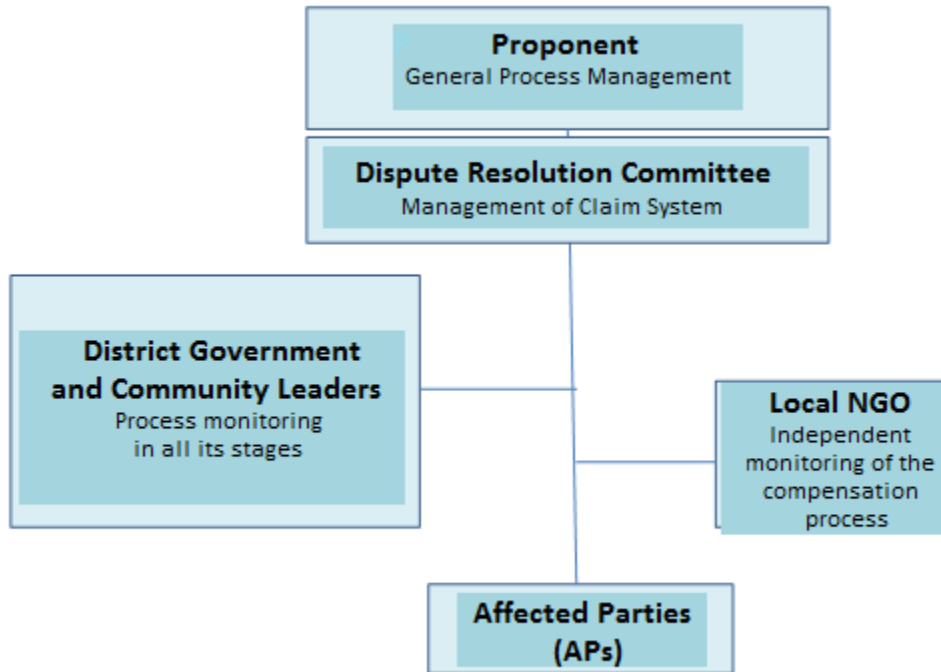


Figure 10. Recommended implementation structure

Although not directly a part of the implementation structure, we stress the key role of the new National Directorate for Land Planning and Resettlement (DINOTER), which shall, in principle, be responsible for the assessment and issuing of a technical opinion on this SCLUP, before final approval by the District Government. The responsibilities of the key players in the process are summarized below.

8.2 BIDDER'S RESPONSIBILITIES

The Bidder has the lead role in the implementation of the Compensation Plan. Thus, the Bidder has the following specific responsibilities:

- Management, supervision and coordination of all activities required to implement the Compensation Plan;
- Ensure, directly or through a subcontractor and in coordination with the Provincial Government, municipal authorities and community leaders, that the Affected Parties are duly informed of all relevant activities of the process;
- Ensure, directly or through a subcontractor and in coordination with the Provincial Government, municipal authorities and community leaders, that the APs are aware of their rights and obligations;

- Ensuring that the APs are properly informed about the proposed compensation package, including their right to lodge an objection to the terms of calculation of the compensation amounts;
- Establishing and managing a grievance and dispute resolution easy and affordable mechanism and disseminate their procedures to the APs;
- Ensure the necessary funds for the payment of compensation;
- Ensure monitoring of the process, in coordination with the local government;
- Consultation with relevant government officials (DINOTER and the District Government) on possible alternatives to offset / compensate people for the loss of ancestral rights over the land and the loss of land as a productive asset;
- Hiring (or appointing) an officer with the necessary skills to interact on a regular basis with communities, local leaders and Affected Parties, as Community Liaison Officer;
- Proceed to debranching and cleaning of replacement land parcels before delivery to the families affected.

Additionally, it is recommended that the Project Bidder establish an Employment Policy, to consider, to the extent possible, priority hiring of members of households affected as local labour (unskilled and semi-specialized), according to the needs of the various stages of the project.

It is also recommended that as part of a Corporate Social Responsibility Policy, if applicable, the Bidder consider concrete actions that benefit affected households, with special attention to those indicated as being vulnerable.

8.3 DISPUTE RESOLUTION COMMITTEE (DRC) RESPONSIBILITIES

The DRC should include representatives of the Bidder, the District Government and relevant local leaders and shall be responsible for the management of the claims received.

The DRC has the following specific responsibilities:

- Record, acknowledge and resolve in a timely manner, any claims received in relation to the Project or the Compensation Process;
- Record, acknowledge and resolve, in a timely manner, any disputes motivated by the Project or the Compensation Process;
- Maintain a current file of all open cases;
- Forward to a higher court any complaints and/or disputes not solvable at the level of the DRC.

8.4 DISTRICT GOVERNMENT RESPONSIBILITIES

Under the current legislation, the District Government assumes a role of primary importance throughout the whole Compensation Plan preparation and implementation process. Without prejudice to any other duties, the District Government has the following specific responsibilities:

- Track and monitor all stages of preparation of the Simplified Compensation and Land Use Plan;
- Coordinate with the National Directorate for Land Planning and Resettlement to define all the responsibilities incumbent upon it in the process, according to current Mozambican legislation;
- Identify and allocate the necessary replacement land;
- Provide a formal channel of communication and goodwill between community members and the Bidder;
- Guarantee that the APs are well informed by the local authorities (neighbourhood chiefs and chiefs) at all stages of the compensation process;
- Ensure that the APs are aware of their rights and obligations;
- Supervise the compensation payment;
- Approve the Simplified Compensation and Land Use Plan, on the advice of DINOTER;
- Establish a moratorium to prevent the opportunist settlement of people in the area of implementation of the Project and ensure compliance.

8.5 COMMUNITY LEADERSHIP RESPONSIBILITIES

Community leaders are an important link between the affected families and the Project. As such, they have the following specific responsibilities:

- Collaborate with the Project to ensure that all persons and property affected by the Project are properly identified;
- identify and address potential cases of opportunism and ensure compliance with the moratorium;
- Resolve issues of plots of land overlapping, and undue claims of property and improvements;
- Assist in contacting and scheduling restricted meetings with vulnerable APs;
- Participate in the claim and / or dispute resolution process;
- Manage the process of allocation of individual plots of land to affected families.

9 COMPENSATION PAYMENT

Payment of compensation is the Bidder's responsibility. Payments of compensation amounts should be made individually to the head of each household affected, in the presence of two reputable witnesses.

This does not preclude the possibility of the compensation payment be made in cash. This system has, however, several drawbacks, namely:

- Potential security issues for the paying party, associated with the transport of large sums of money to the place of payment.
- Potential security issues for the recipient, when it becomes public knowledge that he keeps the money received at home, thus making him vulnerable to criminal (assaults) or accidental situations (fire, for example) that may prevent him from enjoying of the compensation received.

Thus, in order to ensure a safe, transparent and documented process, it is recommended that payment of the agreed amounts be made to the Affected Parties by crossed check or bank transfer.

To enable this process, it is essential that the Bidder, in coordination with the District Government and other relevant bodies, facilitate the acquisition of Identity Cards to allow for the opening of bank accounts by the Affected Parties who might not have done so already. To this end, the following actions should be undertaken:

- Identification for the Affected Parties who do not yet have a bank account;
- Ensure that the Affected Parties have the documentation required for the opening of a bank account and provide support in obtaining this documentation, requesting through the District Government, the displacement of a flying squad of the National Civil Identification Directorate to Mugonda;
- Identify and contact a bank institution with representation in the city of Mocuba to conduct the necessary operations;
- Facilitate contact between the Affected Parties and the selected financial institution.

The following process will be followed:

- Cacluation of individual compensation
- Negotiation with affected parties
- Adoption of grievance mechanism

- Monitoring the identification and allocation of replacement land
- Monitoring the replacement and allocation of individual plots
- Monitoring the preparation of parcels for delivery
- Payment of monetary compensation

10 CLAIMS AND DISPUTE RESOLUTION

It is possible that over the compensation process disputes will arise related to the identification of property located within the Project area and the ownership of such property. Thus, it is recommended that the Bidder establish and publish grievance and dispute resolution procedures, to enable the Affected Parties to exercise their legal rights, and open channels of communication to seek to establish the necessary consensus regarding any claims or disputes that might emerge during the process. Ideally, there should be forms and / or claim books available at the headquarters of the neighbourhoods in order to ensure easy access by the interested parties to the complaint process (a model of claim and dispute record card is suggested in **Appendix 3**).

Dispute resolution must be carried out with the intermediation of community leaders and the District Government, and the process should be duly documented. For this purpose, it is recommended that a Dispute Resolution Committee (DRC) be constituted, comprised of representatives of the Bidder, the District Government and relevant community leaders. It is further recommended that the Bidder appoint a Community Liaison Officer (CLO) in order to maintain effective and permanent contact with the Affected Parties. If the parties, after mediation by the DRC, are unable to reach an agreement in due time, the matter shall be referred to the Court of Justice of Mocuba.

The claim and dispute resolution mechanism must be accessible, easy to use and widely spread within of the families affected.

10.1 CLAIM REGISTRATION AND DOCUMENT PROCESS

The process begins with the formal registration of a complaint. The Affected Parties may submit their complaints in writing or verbally. The verbal complaints should, as soon as possible, be copied in writing by the Bidder's CLO in the presence of the claimant and, if possible, of an older witness (preferably a community leader). The written record will be made in duplicate, the original to the Bidder (for prosecution) and a copy to the complainant. All issues raised during the dispute resolution process, as well as the resulting conclusions should be recorded in documents duly signed by the parties. These documents should be included in their personal files.

As a general rule, it is recommended that whenever the Affected Parties require assistance in filling out the complaint and dispute registration form, or in drafting letters and official requests, the Bidder (through his Community Liaison Officer) or local leaders should be the ones proving it.

The Project Bidder will be responsible for managing the claim and dispute resolution mechanism (through his Community Liaison Officer). The Project Bidder should keep records of the entire process, noting the complaints presented, as well as any answers and the agreements reached. This information should to be stored in a file (Claim and Dispute Database) in order to ensure that the process is transparent and

accessible. The Community Liaison Officer should ensure that all information regarding the solutions proposed by each level of mediation is conveyed to those who submitted the complaint, and provide the necessary explanations.

10.2 INSTANCES OF CLAIM AND DISPUTE RESOLUTION

The claim resolution process that is recommended here corresponds to a model established by practice and which takes place typically in three instances.

The **first instance** is the direct negotiation between the parties (Claimant and Bidder), to arrive at a consensus. If necessary, the parties may request mediation by a community leader, to arbitrate the process. The deadline for resolving claims or disputes in the first instance is 7 days.

The **second instance** intervenes in case of an impossibility to reach an agreement by direct negotiation and it consists of the DRC, the body who oversees the unsolved cases in the first instance. The deadline for resolving claims or disputes in the second instance is 30 days.

The **third and last instance** is made up of the Court of Justice of Mocuba, to which the DRC should refer all cases where it has not been possible to obtain an agreement between the parties. The Court's decision will be final.

Figure 11 below shows a schematic representation of the claim process.

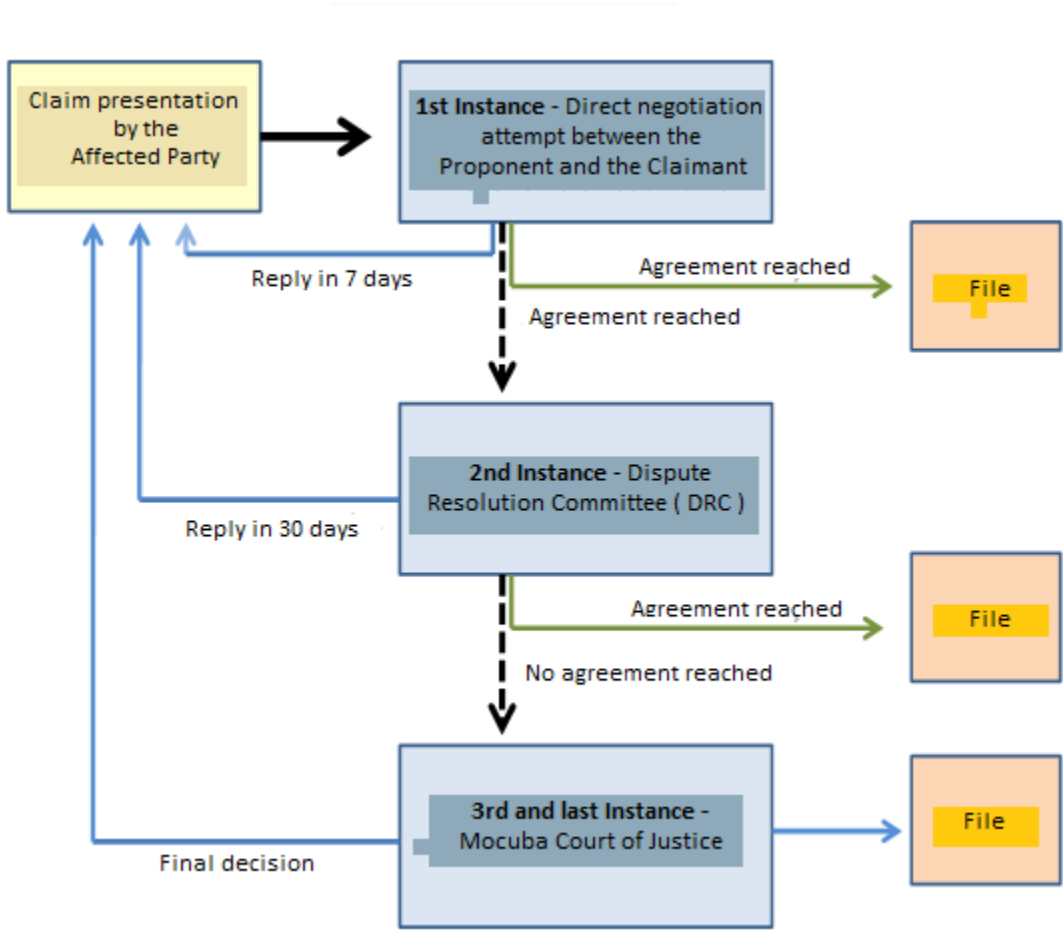


Figure 11. Schematic representation of the claim process

11 INDICATIVE BUDGET

Table 10 below shows the estimated compensation costs for loss of goods (annual crops and fruit trees) and improvements (ancillary structures) recorded in the Project area. This budget was prepared on the basis of the available evidence and is **merely indicative** and may be amended by the following circumstances:

- Changes to the Project design that will change the affected area and, consequently, the amount of affected assets; and / or
- Changes of compensation amounts as a result of the negotiation process between stakeholders in the process (Bidder, District Government and Affected Parties).

Table 10. Indicative Compensation Budget

Item	Compensation Amount (in MZM)
Agricultural crops	4.277.815,00
Fruit trees	1.853.510,00
Ancillary structures	50,000.00*
TOTAL	6.181.325,00

* Amount estimated as sufficient to offset the 3 structures to be assessed.

Note that in addition to the compensation costs above, the effective implementation of this plan will cover other related costs, whose estimate is not covered by this Compensation Plan. These costs relate to the following components:

- Logistics of holding meetings / meetings with communities and households affected to disseminate information about the SCLUP;
- Treatment of identification documents for the Affected Parties that do not have them yet (if applicable);
- Negotiating with banks to open accounts for Affected Parties (if applicable);
- Logistics inherent to the payment process of compensation / damages;
- Monitoring activities and assessing the implementation of the SCLUP and other associated activities;
- Implementation, management and maintenance of the claim registration mechanism and dispute resolution;

- Consulting and negotiating with communities and local leaders about the compensation methods for the loss of community heritage, including their monitoring and assessment activities;
- Defining and implementing viable options to compensate for the loss of the land use right, including their monitoring and assessment activities.

12 IMPLEMENTATION SCHEDULE

The implementation of this SCLUP should start as soon as it is approved. The figure below suggests an implementation schedule, considering the main tasks to be performed as a reference.

Figure 12. Implementation Schedule

Task	Month 1	Month 2	Month 3	Month 4
Calculation of Single Compensations	█			
Negotiation with the Affected Parties	█	█		
Assembly and disclosure of claim mechanism	█			
Identification and allocation of replacement land	█			
Replacement land installment and allocation of individual plots		█	█	
Preparation of plots for delivery (debranching and clearing)			█	█
Payment of monetary compensation				█

13 CONSIDERATIONS AND FINAL RECOMMENDATIONS

The situations of involuntary displacement of people (whether physical displacement or economic displacement) due to the implementation of development projects have been increasingly scrutinized by the Mozambican civil society. Motivated in part by some experiences considered as negative, this increasing scrutiny is the source of the recent legislative effort made by the Government to regulate this issue and the direct involvement trend of government bodies at all stages of these processes, with vast responsibilities assigned to District governments in this regard.

A properly conducted procedure is therefore a fundamental prerequisite for the Project to get a solid social consensus and establish a solid relationship with the surrounding communities. In this sense, it is recommended that in addition to the implementation of the SCLUP (a merely compensatory instrument) and according to international best practices, the Bidder insert in his Corporate Social Responsibility Policy, measures aiming at the consolidation of household living standards affected in the post-compensation period, such as protective measures for vulnerable people in particular and whenever possible, in the context of the employment recruitment policy.

Appendix 1

LIST OF REGISTERED HOUSEHOLDS AND PROPERTY SUMMARY

LIST OF REGISTERED HOUSEHOLDS AND PROPERTY SUMMARY

Card Nr.	Interviewee Name	Relationship with the Head of Household (HH)	Neighbourhood where Household resides	Number of Farm Plots	Ancillary Structures	Fruit Trees
1	FRANCISCO SUMANA	Head of Household	Mugonda	1		
2	LISERNA SANAIO	Head of Household	Mugonda	3		1
3	JOANQUINA JOAO MUCUI	Head of Household	Mugonda	1		
4	MONIZ AGUACHEIRO	Head of Household	Mugonda	2		
5	LICIA INDIA	Head of Household	Mugonda	1		
6	ROSALINA BERNARDO	HH's Spouse	Mugonda	1		
7	ISABEL MUSSURMAQUE	Head of Household	Samora Machel	2		22
8	VICTORINO SABONETE	Head of Household	Mugonda	1		15
9	JULIETA SANTOS	HH's Spouse	Mugonda	1		
10	AMELIA AGOSTINHO	Head of Household	Mugonda	1		3
11	CARLITOS MANTEIGA	Head of Household	Mugonda	1		3
12	CARLOS SIMOES	Head of Household	Mugonda	1		3
13	MAULIDA MATHESSO	Head of Household	Mugonda	1		4
14	VIRGINIA ARMANDO	HH's Spouse	Mugonda	2		
15	CANCELLED					
16	NELSON MONIZ	Son/Daughter	Mugonda	1		
17	LUCIA SUANGUETE	HH's Spouse	Mugonda	1		2
18	ROSA ARAUJO	Head of Household	Mugonda	1		
19	OFELIA ORLANDO	Head of Household	Mugonda	1		
20	MARIA JOAO	Head of Household	Mugonda	1		51
21	VALENTE MUSSIQUELOTA	Head of Household	Bive	1		
22	XADREQUE ERNESTO	Head of Household	Bive	1		
23	ADELINA PEQUENINO	Head of Household	Bive	2		
24	LUCIA MUALETE	Head of Household	Bive	1		
25	CARLITOS MONIZ	Head of Household	Mugonda	1		
26	RITA AGOSTINHO	HH's Spouse	Mugonda	1		39
27	INACIA ROSARIO	HH's Spouse	Mugonda	1		7
28	ADELINA MUNHOGA	Head of Household	Mugonda	2		1
29	CLEMENTINA MANUELA	Head of Household	Mugonda	1		1
30	LUISA MANUELA	Head of Household	Mugonda	1		1
31	LURDES DANIEL	HH's Spouse	Mugonda	1		
32	PAULINA MADEIRA	HH's Spouse	Mugonda	1		5
33	PAULINA INTABELA	Head of Household	Mugonda	1		1
34	ISAURA FELIZ	HH's Spouse	Mugonda	1		
35	FRANCISCA JOAO	Head of Household	Mugonda	1		

Card Nr.	Interviewee Name	Relationship with the Head of Household (HH)	Neighbourhood where Household resides	Number of Farm Plots	Ancillary Structures	Fruit Trees
36	EUGENIA JOAQUIM	HH's Spouse	Mugonda	1		
37	RAQUETA PAULO	Head of Household	Another neighbourhood	1		16
38	ALBERTINA RIBEIRO	HH's Spouse	Muandiva	1		1
39	LIDIA SOZINHO	Head of Household	Mugonda	1		1
40	GASPAR EUGENIO	Head of Household	Mugonda	1		
41	JORNE CARLITOS	Son/Daughter	Another neighbourhood	1		13
42	AMELIA SANTOS	Head of Household	Another neighbourhood	1		
43	LAURINDA ANTONIO	Head of Household	Another neighbourhood	1		
44	JOANA ANTONIO	HH's Spouse	Bive	1		
45	VASCO PEDRO MANGAO	Son/Daughter	Bive	1		
46	OSVALDO ALBERTO	Head of Household	Bive	1		
47	LIMITADA MANZACAO	Head of Household	Bive	1		27
48	JAIME RIBEIRO	Head of Household	Bive	1		16
49	LUISA BETINHO	HH's Spouse	Samora Machel	1		12
50	AIDA ANTONIO	HH's Spouse	Samora Machel	1		
51	FATIMA ALFREDO	Head of Household	Samora Machel	1		
52	ARTUR FONSECA MANUEL	Head of Household	Muandiva	1		32
53	ASISA AUGUSTA EMILIO	HH's Spouse	Samora Machel	1		
54	LUISA FABIO RUAONE	HH's Spouse	Samora Machel	2		3
55	LAURA VALENTIM	HH's Spouse	Samora Machel	1		1
56	EUSEBIO DANIEL JOAO	Head of Household	Mugonda	1		8
57	GUNLELA CAMPOS NICUE	Head of Household	Mugonda	1		
58	JULIETA NDUHA	Head of Household	Mugonda	1		
59	FRANCISCO NAHIVINERO	Head of Household	Mugonda	1		
60	ALBERTO JOSE NIBODO	Head of Household	Another neighbourhood	1		2
61	NOEMIA SOZINHO	HH's Spouse	Mugonda	1		4
62	ESTRELA LUIS	HH's Spouse	Samora Machel	1		4
63	SEBASTIAO MIUME	Head of Household	Muandiva	1		
64	FERNANDO SOZINHO	Head of Household	Mugonda	1		
65	VIOLENCIA NUVUNGUIUA	HH's Spouse	Another neighbourhood	1		4
66	MINDA AGOSTINHO	HH's Spouse	Mugonda	1		

Card Nr.	Interviewee Name	Relationship with the Head of Household (HH)	Neighbourhood where Household resides	Number of Farm Plots	Ancillary Structures	Fruit Trees
67	OLINDA VICTRORINO	HH's Spouse	Muandiva	1		
68	JULIA NIVAVIHA	HH's Spouse	Mugonda	2	WELL	1
69	LUDES UASSANANIA	Head of Household	Samora Machel	1		
70	ANTONIO GUNZANHANE	Head of Household	Samora Machel	1		
71	CATARINA M CARASASSE	Head of Household	Muandiva	1		17
72	ZECA P MAZAMELA	Head of Household	Another neighbourhood	1		
73	GLORIA ALFREDO	HH's Spouse	Samora Machel	1		18
74	JUBAR S BARROSO	Head of Household	Samora Machel	1		4
75	FANITO H OLIVEIRA	Head of Household	Samora Machel	1		3
76	FERNANDO WARANIGANE	Head of Household	Samora Machel	1		
77	MARGARIDA VICENTE	Head of Household	Mugonda	1		3
78	DAUNISA T MACONDE	Head of Household	Samora Machel	1		1
79	CLARA FRANCISCO	HH's Spouse	Samora Machel	1		1
80	MANUEL DOS SANTOS	Head of Household	Samora Machel	1		
81	JOANA B CIPRIANO	HH's Spouse	Samora Machel	1		
82	ARGELIO MARIO	Head of Household	Samora Machel	1		1
83	GABRIELA FRANCISCO	HH's Spouse	Samora Machel	1		
84	BERNARDO MOLE	Head of Household	Samora Machel	2		
85	JULIETA BENEDITO	HH's Spouse	Samora Machel	1		
86	HELENA ALBERTO	HH's Spouse	Samora Machel	1		1
87	LAURA ARLINDO	HH's Spouse	Samora Machel	1		1
88	ROSA PINTO	HH's Spouse	Muandiva	1		19
89	ALMEIDA GRAVATA	Head of Household	Mugonda	1		10
90	JULIO ANGELO	Head of Household	Mugonda	1		1
91	GERONIMO ANTONIO	Head of Household	Mugonda	2		
92	ROSITA SUATERA	Head of Household	Muandiva	1		1
93	MADALENA SULYAI	Head of Household	Mugonda	1		
94	JUDITE DOLIS	HH's Spouse	Samora Machel	2		
95	ANGELA ALFREDO	Head of Household	Muandiva	1		
96	MABNUEL CARLITOS	Head of Household	Muandiva	1		
97	ESTRELA ALBERTO	HH's Spouse	Samora Machel	1		1
98	ZITA FABIAO	HH's Spouse	Mugonda	1		4
99	ROFINO EUGENIO	Head of Household	Bive	1		
100	AFONSO EUGENIO	Head of Household	Bive	2		2
101	VELINDA EUGENIO	HH's Spouse	Bive	1		
102	ILDA ALFAIATE	HH's Spouse	Samora Machel	1		

Card Nr.	Interviewee Name	Relationship with the Head of Household (HH)	Neighbourhood where Household resides	Number of Farm Plots	Ancillary Structures	Fruit Trees
103	CARLOTA CAETANO	HH's Spouse	Samora Machel	1		2
104	ANTONIO JOSE MARECO	Head of Household	Samora Machel	1		14
105	IZALGINA MARIO	Head of Household	Samora Machel	1		5
106	BERTA MARCILIO	HH's Spouse	Samora Machel	1		1
107	AISSA JOAQUIM	HH's Spouse	Another neighbourhood	1		
108	ALICE CEBOLA	Head of Household	Samora Machel	1		
109	JOAO CINQUENTA	Head of Household	Samora Machel	1		112
110	JOSE MACONTARA	Head of Household	Samora Machel	1		
111	FATIMA OSORIO	HH's Spouse	Samora Machel	1		1
112	LIDIA REMIGIO	Head of Household	Muandiva	1		21
113	RIEZA CHIPOSSI	HH's Spouse	Muandiva	1		30
114	HERMINIO PEQUENINO	Head of Household	Muandiva	1		1
115	MATILDE JOSE	HH's Spouse	Samora Machel	1		
116	FERNANDA HERMINIO	HH's Spouse	Samora Machel	1		
117	MARIA RANGEIRO	HH's Spouse	Another neighbourhood	1		
118	ABILIO JANEIRO	Head of Household	Samora Machel	1		2
119	DALILA DA GRACA	Head of Household	Samora Machel	1		
120	HORTENCIA ALFREDO	Head of Household	Samora Machel	1		12
121	JORDAO DANIEL	Son/Daughter	Samora Machel	1		2
122	GRACINDA ALBERTO	Head of Household	Samora Machel	2		5
123	BENJAMIM MATECO	Head of Household	Mugonda	1		34
124	JOANA TRAVAO	HH's Spouse	Another neighbourhood	1	Porch	4
125	ARCANJO JOSE NICOLAO	Head of Household	Samora Machel	1		
126	JULIETA LAPISSONE	HH's Spouse	Samora Machel	1		1
127	DANIEL PEDRO	Head of Household	Samora Machel	1		1
127	DANIEL PEDRO	Head of Household	Samora Machel	1		1
128	ISAC JOAQUIM	Head of Household	Samora Machel	1		1
129	FATIMA MALADO	HH's Spouse	Samora Machel	1		
130	LUIS ROFINO	Head of Household	Samora Machel	2		3
131	EUSEBIO NAVELA	Head of Household	Samora Machel	1		
132	ISABEL ALBINO	HH's Spouse	Samora Machel	1		1
133	ISABEL FRANCISCO	HH's Spouse	Samora Machel	1		34
134	AGOSTINHO PAULINO	Head of Household	Muandiva	1		6
135	ESTEFANIA MANUEL	HH's Spouse	Samora Machel	1		2

Card Nr.	Interviewee Name	Relationship with the Head of Household (HH)	Neighbourhood where Household resides	Number of Farm Plots	Ancillary Structures	Fruit Trees
136	BERNARDO PEDRO	Head of Household	Samora Machel	1		2
137	EUSEBIO JOAO	HH's Spouse	Samora Machel	1		
138	ANTONIO AMELA	Head of Household	Mugonda	1		1
139	JULIETA PEDRO	Head of Household	Samora Machel	1		3
140	LUISA ETAGA	Head of Household	Samora Machel	1		0
141	CACILIA DA SILVA	Head of Household	Samora Machel	1		13
142	ADELIA ARMANDO	HH's Spouse	Samora Machel	1		
143	LEONARDO FERNANDO	Son/Daughter	Another neighbourhood	1		1
144	SOFIA AFONSO	HH's Spouse	Samora Machel	1		
145	ELIUS ANGELO	Head of Household	Samora Machel	1		32
146	ADELINA CHICUATE	HH's Spouse	Samora Machel	1		4
147	FLORIANA CESAR	HH's Spouse	Samora Machel	1		12
148	ISABEL NICOLOCA	HH's Spouse	Muandiva	1		2
149	FERNANDO SOZINHO	Head of Household	Samora Machel	1		21
150	BONEFACIO MUATEPULA	Head of Household	Samora Machel	1		15
151	JULIANO ANTONIO	Head of Household	Another neighbourhood	1		
152	VIDAL IMPUANO	Head of Household	Samora Machel	1		
153	CECILIA DOMINGOS	HH's Spouse	Muandiva	1		
154	ROSA SILVA	HH's Spouse	Samora Machel	1		1
155	JOAOZINHO RICARDO	Head of Household	Samora Machel	1		
156	FERNANDO VIRGILIO	Son/Daughter	Samora Machel	1		
157	ALEXANDRE MANGACAO	Head of Household	Samora Machel	1		6
158	ANA ANGELO	HH's Spouse	Samora Machel	1		
159	ANGELO AMARO	Head of Household	Samora Machel	1		
160	SALIMO NIVAVIVA	Head of Household	Samora Machel	1		1
161	OLINDO ALBERTO	Brother/Sister	Outro bairro	2		
162	DINIS GERENTE	Head of Household	Bive	1		7
163	BELITO BERNARDO	HH's Spouse	Another neighbourhood	1		
164	RAZANO VICIAL	Head of Household	Samora Machel	1		2
165	MARIA LUCIANO	HH's Spouse	Samora Machel	1		
166	CRISTIANO CASTIANO	Head of Household	Samora Machel	2		
167	ELISEU NICOSSE	Head of Household	Mugonda	1		1
168	TERESINHA MANTEIGA	HH's Spouse	Samora Machel	1		5
169	JOANA ALBERTO AVFELI	Head of Household	Another neighbourhood	1		1

Card Nr.	Interviewee Name	Relationship with the Head of Household (HH)	Neighbourhood where Household resides	Number of Farm Plots	Ancillary Structures	Fruit Trees
170	LUIS ROQUE	Head of Household	Mugonda	1		
171	JORGE NAMACUSSA	Head of Household	Samora Machel	1		222
172	OCTAVIO BASILIO	Head of Household	Samora Machel	1		
173	TERESA EUGENIO	HH's Spouse	Samora Machel	1		
174	ALFREDO A NIBODO	Head of Household	Mugonda	1		1
175	ARTUR DINIS MULOIUA	Head of Household	Mugonda	2		54
176	SIDALIA R TOMAS	HH's Spouse	Samora Machel	1		
177	FERNANDO EUGENIO	Head of Household	Mugonda	1		1
178	AMERICO CUNHEVO	Head of Household	Another neighbourhood	1		
179	DINA JEMISONE CHIPON	HH's Spouse	Another neighbourhood	1		2
180	HELENA ARTUR	HH's Spouse	Muandiva	1		40
181	EUSENIA ATIANA	Head of Household	Samora Machel	1		
182	ADELIA FABIAO	Head of Household	Samora Machel	1		
183	BETINHA MENDES	Head of Household	Samora Machel	2		
184	JAOQUINA ARMANDO	Head of Household	Samora Machel	1		3
185	ZEFERINO PORTUGUES	Head of Household	Samora Machel	1		87
186	LIDIA SEBASTIAO	HH's Spouse	Samora Machel	1		1
187	LUCINDA JANEIRO	HH's Spouse	Samora Machel	1		3
188	LUIS JACINTO	Head of Household	Samora Machel	2		101
189	ANTUNES MUEVESSORO	Head of Household	Samora Machel	1		
190	PEDRO EUGENIO	Head of Household	Samora Machel	1		
191	MANUEL JULIO	Head of Household	Samora Machel	1		
192	ERNESTO MANGULETE	Head of Household	Mugonda	1		
193	JULIETA LUIS	HH's Spouse	Mugonda	1		1
194	JOSE MUIRA	Head of Household	Another neighbourhood	1		59
195	REGINA ORLANDO	HH's Spouse	Samora Machel	1		1
196	OSVALDO JOAO	Son/Daughter	Samora Machel	1		46
197	AUGUSTO MUZENA	Head of Household	Muandiva	1		
198	MADALENA VICTOR	Head of Household	Another neighbourhood	1		
199	ANTONIO LUIS	Head of Household	Samora Machel	2		1
200	LEONORA JOSE	HH's Spouse	Samora Machel	1		1
201	EUGENIA MULALEIA	Head of Household	Mugonda	2		3
202	ADLAIDO FRANCISCO]	Son/Daughter	Samora Machel	1		1
203	ALVES NATAMILO	Head of Household	Mugonda	2		1

Card Nr.	Interviewee Name	Relationship with the Head of Household (HH)	Neighbourhood where Household resides	Number of Farm Plots	Ancillary Structures	Fruit Trees
204	INES JOSE	Son/Daughter	Samora Machel	1		
205	CAROLINA TAIBO	HH's Spouse	Muandiva	1		5
206	SANTOS NAUELA	Head of Household	Mugonda	1		
207	ARLINDO COMPANHEIRO	Head of Household	Mugonda	1	WELL	10
208	CASSIMO ARLINDO	Head of Household	Mugonda	1		1
209	MORAIS ALFREDO	Did not reply	Mugonda	2		

Appendix 2

TABLE OF COMPENSATION AMOUNTS FOR AGRICULTURAL PRODUCE FOR THE MOCUBA DISTRICT

DISTRICT OF MOCUBA

(Illegible Seal)

PRICE OF AGRICULTURAL CROP, FRUIT AND SHADOW TREES FOR COMPENSATION

Nr.	CROPS	Production Start Year/Month	Quantity of Fruit/Other Products Produced / Campaign	Cost in MZM (metical)		Total Cost	Price of Producing Plant	Price of Non-Producing Plant	Remarks
				Per Fruit or Unit	Per kg of Fruit				
1	Coconut tree	4 to 10	100 coconuts	10.00	-	1,000.00	700.00	500.00	
2	Mango tree	4 to 10	500 kg	-	12.50	6,250.00	450.00	280.00	
3	Cashew tree	3 to 10	10 kg	-	7.50	75.00	680.00	250.00	
4	Orange tree	4	60 kg	10.00	-	420.00	430.00	200.00	
5	Tangerine tree	4	60 kg	-	10.00	420.00	450.00	200.00	
6	Lemon tree	4	60 kg	5.00	-	120.00	375.00	155.00	
7	Papaya tree	1 to 2	-	10.00	-	600.00	350.00	150.00	
8	Sugar Cane	1	-	10.00	-	-	-	-	
9	Ata tree	5 to 10	-	10.00	-	250.00	200.00	150.00	
10	Guava tree	3	150 kg	-	10.00	1,500.00	100.00	50.00	
11	Manioc	6 to 12	5.5 tons/ha	-	10.00	55,000.00	-	-	
12	Corn	3 to 4	1 ton/ha	-	6.00	6,000.00	-	-	
13	Peanuts	3 to 4	0.8 tons/ha	-	8.00	6,400.00	-	-	
14	Boer Beans	6 to 7	0.8 tons/ha	-	13.00	10,400.00	-	-	
15	Nhemba Beans	3 to 4	0.8 tons/ha	-	12.00	9,600.00	-	-	
16	Sweet Potato	4	4 tons/ha	-	10.00	40,000.00	-	-	
17	Reno Potato	4	11 tons/ha	-	25.00	275,000.00	-	-	
18	Rice	4 to 6	1 ton/ha	-	8.00	8,000.00	-	-	
19	Mapira	6 to 7	0.7 tons/ha	-	30.00	21,000.00	-	-	
20	Mexoeira	3 to 4	0.5 tons/ha	-	25.00	12,500.00	-	-	
21	Solococo Beans	3 to 4	0.5 tons/ha	-	45.00	22,500.00	-	-	
22	Butter Beans	3 to 4	0.8 tons/ha	-	23.00	18,400.00	-	-	
23	Jugo Beans	3 to 4	0.6 tons/ha	-	12.00	7,200.00	-	-	
24	Horticultural	3 to 4	7.6 tons/ha	-	13.00	98,800.00	-	-	
25	Banana Plant	6 to 7	10 bunches	-	-	-	350.00	150.00	
26	Pineapple Plant	4 to 10	10,000	35.00	-	-	-	-	
27	Avocado Tree	3 to 10	-	-	-	-	450.00	250.00	
28	Breadfruit	3 - 10	-	-	-	-	350.00	200.00	

PRICE OF AGRICULTURAL CROP, FRUIT AND SHADOW TREES FOR COMPENSATION

Nr.	CROPS	Production Start Year/Month	Quantity of Seeds/ Cotton Produced	Cost in MZM (metical)		Total Cost	Price of Producing Plant	Price of Non-Producing Plant	Remarks
				Sisal and Cotton/kg	Seed/kg				
1	Jatropha	4 to 6	5 kg/Plant	-	12.00	-	150.00	100.00	
2	Sisal	3 to 6	25 Tons/ha	-	-	-	150.00	100.00	
3	Cotton	4	600/ha	8.00	-	4,800.00	-	-	

Nr.	Species	Age (years)	Cost of Production/ Plant	(Illegible) in MZM_(metrical)					
				Debranching/ Pruning	Weeding Control	Control against Forest Fires	Other Treatments	Emotional Value	(Illegi.)
Exotic Species									
1	Acacia	0 to 20	10.00	140.00	80.00	50.00	100.00	500.00	88 (Illegible)
2	Eucalyptus								
3	Pine								
Native Species									
	Umbila								
	Jambire								
	Chanfuta								
	Moringueira								

*Applicable only to planted species and not to those that sprout spontaneously.

Appendix 3

Detailed compensation table

Nº do AF	Nome do CF	Machamba (Codigo)	Area da nachamba (ha)	Estado da machamba	Culturas	Area ocupada	Preco unitario da cultura (MZM)	Valor total da cultura (MZM)	Tipo de arvore de fruta	Nº de arvores de fruta	Preco da arvore de fruta	Valor total de arvores de fruta (MZM)	Estruturas de apoio	Total Valuation	
1	FRANCISCO SUMANA		1	0.881467	Pousio	Nenhuma	0								
		Sub-Total	1	0.881467			0		0		0		0		0
2	LISERNA SANAIO		1	0.792366	Cultivada	Feijão boer	0.792366	10400	8241	Mangueira	1	6250	6250	14491	
			2	0.222638	Cultivada	Mandioca	0.222638	55000	12245					12245	
			3	0.086516	Cultivada	Arroz	0.086516	8000	692					692	
		Sub-Total	3	1.10152			1.10152		21178		1		6250		27428
3	JOANQUINA JOAO		1	0.134101	Pousio	Nenhuma	0								
		Sub-Total	1	0.134101			0		0		0		0		0
4	MONIZ AGUACHEIRO		1	0.428918	Pousio	Nenhuma	0								
			2	0.224015	Pousio	Nenhuma	0								
		Sub-Total	2	0.652933			0		0		0		0		0
5	LICIA INDIA		1	0.199818	Cultivada	Mandioca	0.199818	55000	10990					10990	
		Sub-Total	1	0.199818			0.199818		10990		0		0		10990
6	ROSALINA BERNARDO		1	0.346802	Pousio	Nenhuma	0								
		Sub-Total	1	0.346802			0		0		0		0		0
7	ISABEL MUSSURMAQUE		1	0.823663	Cultivada	Mandioca	0.823663	55000	45301	Bananeira	10	350	3500	48801	
			2	0.875156	Pousio	Nenhuma	0.875156			Mangueira	8	6250	50000	50000	
										Cajueiro	2	75	150	150	
										Coqueiro	2	1000	2000	2000	
		Sub-Total	2	1.698819			1.698819		45301		22		55650		100951
8	VICTORINO SABONETE		1	1.545663	Cultivada	Mandioca	1.545663	55000	85011	Mangueira	3	6250	18750	103761	
										Cajueiro	5	75	375	375	
										Laranjeira	1	420	420	420	
										Coqueiro	6	1000	6000	6000	
										Palmeira	3	1000	3000	3000	
		Sub-Total	1	1.545663			1.545663		85011	0	18		28545		113556
9	JULIETA SANTOS		1	0.449936	Cultivada	Mandioca	0.449936	55000	24746					24746	
		Sub-Total	1	0.449936			0.449936		24746	0	0		0		24746
10	AMELIA AGOSTINHO		1	0.430898	Cultivada	Mandioca	0.430898	55000	23699	Mangueira	2	6250	12500	36199	
										Laranjeira	1	420	420	420	
										Ateira	1	250	250	250	
		Sub-Total	1	0.430898			0.430898		23699	0	4		13170		36869
11	CARLITOS MANTEIGA		1	0.356289	Cultivada	Mandioca	0.356289	55000	19596	Cajueiro	3	75	225	19821	
		Sub-Total	1	0.356289			0.356289		19596	0	3		225		19821
12	CARLOS SIMOES		1	0.638033	Cultivada	Mandioca	0.638033	55000	35092	Bananeira	2	350	700	35792	
										Mangueira	1	6250	6250	6250	
		Sub-Total	1	0.638033			0.638033		35092	0	3		6950		42042
13	MAULIDA MATHESSE		1	0.84504	Cultivada	Mandioca	0.84504	55000	46477	Bananeira	4	350	1400	47877	

Nº do AF	Nome do CF	Machamba (Codigo)	Area da nachamba (ha)	Estado da machamba	Culturas	Area ocupada	Preco unitario da cultura (MZM)	Valor total da cultura (MZM)	Tipo de arvore de fruta	Nº de arvores de fruta	Preco da arvore de fruta	Valor total de arvores de fruta (MZM)	Estruturas de apoio	Total Valuation
		Sub-Total	1	0.84504		0.84504		46477		4		1400		47877
14	FRANCISCO ERNESTO		1	0.348976	Pousio	Nenhuma	0							
			2	0.214184	Cultivada	Mandioca	0.214184	55000						11780
		Sub-Total	2	0.56316			0.214184	11780		0		0		11780
16	RAQUETA NIHALELANE		1	0.304997	Cultivada	Milho	0.304997	6000						1830
		Sub-Total	1	0.304997			0.304997	1830		0		0		1830
17	FRANCISCO VURUCA		1	0.682461	Cultivada	Mandioca	0.682461	55000	Bananeira	2	350	700		38235
		Sub-Total	1	0.682461			0.682461	37535		2		700		38235
18	ROSA ARAUJO		1	0.374309	Cultivada	Mandioca	0.374309	55000						20587
		Sub-Total	1	0.374309			0.374309	20587		0		0		20587
19	OFELIA ORLANDO		1	0.185404	Cultivada	Mandioca	0.185404	55000						10197
		Sub-Total	1	0.185404			0.185404	10197		0		0		10197
20	MARIA JOAO		1	0.465503	Pousio	Nenhuma	0.465503		Bananeira	49	350	17150		17150
									Mangueira	2	6250	12500		12500
		Sub-Total	1	0.465503			0.465503	0		51		29650		29650
21	VALENTE MUSSIQUELOTA		1	0.427214	Cultivada	Mandioca	0.427214	55000						23497
		Sub-Total	1	0.427214			0.427214	23497		0		0		23497
22	XADREQUE ERNESTO		1	0.597688	Cultivada	Feijão boer	0.597688	10400						6216
		Sub-Total	1	0.597688			0.597688	6216		0		0		6216
23	ADELINA PEQUENINO		1	0.590403	Cultivada	Mandioca	0.590403	55000						32472
			2	N/A	Cultivada	Mandioca	N/A							
		Sub-Total	2	0.590403			0.590403	32472		0		0		32472
24	LUCIA MUALETE		1	0.670244	Cultivada	Mandioca	0.670244	55000						36863
		Sub-Total	1	0.670244			0.670244	36863		0		0		36863
25	CARLITOS MONIZ		1	0.808841	Pousio	Nenhuma	0.808841							
		Sub-Total	1	0.808841			0.808841	0		0		0		0
26	AVELINO JOAQUIM		1	0.270991	Cultivada	Mandioca	0.270991	55000	Bananeira	39	350	13650		28555
		Sub-Total	1	0.270991			0.270991	14905		39		13650		28555
27	AUGUSTO MUCUALE		1	1.141156	Cultivada	Feijão boer	1.141156	10400	Bananeira	5	350	1750		13618
									Mangueira	2	6250	12500		12500
		Sub-Total	1	1.141156			1.141156	11868		7		14250		26118
28	ADELINA MUNHOGA		1	0.955064	Cultivada	Feijão boer	0.955064	10400	Cajueiro	1	75	75		10008
			2	0.290427	Cultivada	Mandioca	0.290427	55000				0		15973
		Sub-Total	2	1.245491			1.245491	25906		1		75		25981
29	CLEMENTINA MANUELA		1	2.188207	Cultivada	Mandioca	2.188207	55000	Mangueira	1	6250	6250		126601
		Sub-Total	1	2.188207			2.188207	120351		1		6250		126601
30	LUISA MANUELA		1	0.625103	Pousio	Nenhuma	0		Mangueira	1	6250	6250		6250
		Sub-Total	1	0.625103			0	0		1		6250		6250

Nº do AF	Nome do CF	Machamba (Codigo)	Area da nachamba (ha)	Estado da machamba	Culturas	Area ocupada	Preco unitario da cultura (MZM)	Valor total da cultura (MZM)	Tipo de arvore de fruta	Nº de arvores de fruta	Preco da arvore de fruta	Valor total de arvores de fruta (MZM)	Estruturas de apoio	Total Valuation
31	ALFREDO MATUA		1	0.449539	Pousio	Nenhuma	0		Mangueira	1	6250	6250		6250
		Sub-Total	1	0.449539			0	0			1		6250	
32	PAULINA MADEIRA		1	1.056812	Pousio	Nenhuma	0		Mangueira	4	6250	25000		25000
		Sub-Total	1	1.056812			0	0		Cajueiro	1	75	75	
33	PAULINA INTABELA		1	1.17868	Pousio	Nenhuma	0		Mangueira	1	6250	6250		6250
		Sub-Total	1	1.17868			0	0			1		6250	
34	JOSE VIAGEM		1	1.044031	Cultivada	Mandioca	1.044031	55000						57422
		Sub-Total	1	1.044031			1.044031	55000	57422		0		0	
35	FRANCISCA JOAO		1	2.180182	Cultivada	Mandioca	2.180182	55000						119910
		Sub-Total	1	2.180182			2.180182	55000	119910		0		0	
36	INACIO NIVARA		1	0.48769	Cultivada	Mandioca	0.48769	55000						26823
		Sub-Total		0.48769		Feijão-nhema		9600		26823		0		0
37	RAQUETA PAULO		1	0.562577	Cultivada	Mandioca	0.562577	55000		Bananeira	15	350	5250	36192
		Sub-Total	1	0.562577			0.562577	55000	30942	Papaeira	1	600	600	600
38	OLIMPIO MADHUI		1	0.34545	Pousio	Nenhuma	0							350
		Sub-Total	1	0.34545			0	0			1		350	
39	LIDIA SOZINHO		1	0.613326	Cultivada	Feijão-boer	0.613326	10400		Mangueira	1	6250	6250	12629
		Sub-Total	1	0.613326			0.613326	10400	6379		1		6250	
40	GASPAR EUGENIO		1	0.309277	Cultivada	Mandioca	0.309277	55000						17010
		Sub-Total	1	0.309277		Feijão-boer		10400		17010		0		0
41	ADELINA SANTOS		1	1.03385	Pousio	Nenhuma	0			Bananeira	12	350	4200	4200
		Sub-Total	1	1.03385			0	0		Mangueira	1	6250	6250	6250
42	AMELIA SANTOS		1	0.610523	Cultivada	Mandioca	0.610523	55000						33579
		Sub-Total	1	0.610523			0.610523	55000	33579		0		0	
43	LAURINDA ANTONIO		1	0.377153	Cultivada	Feijão-boer	0.377153	10400						3922
		Sub-Total	1	0.377153			0.377153	10400	3922		0		0	
44	BASILIO CLAUDIO		1	0.727626	Pousio	Nenhuma	0							0
		Sub-Total	1	0.727626			0	0	0		0		0	
45	PEDRO ARMANDO		1	0.785145	Cultivada	Mandioca	0.785145	55000						43183
		Sub-Total	1	0.785145			0.785145	55000	43183		0		0	
46	OSVALDO ALBERTO		1	0.433156	Cultivada	Mandioca	0.433156	55000						23824
		Sub-Total	1	0.433156			0.433156	55000	23824		0		0	
47	LIMITADA MANGACAO		1	0.854592	Pousio	Nenhuma	0		Bananeira	14	350	4900		4900

Nº do AF	Nome do CF	Machamba (Codigo)	Area da nachamba (ha)	Estado da machamba	Culturas	Area ocupada	Preco unitario da cultura (MZM)	Valor total da cultura (MZM)	Tipo de arvore de fruta	Nº de arvores de fruta	Preco da arvore de fruta	Valor total de arvores de fruta (MZM)	Estruturas de apoio	Total Valuation
									Mangueira	4	6250	25000		25000
									Cajueiro	6	75	450		450
		Sub-Total	1	0.854592		0		0		24		30350		30350
48	JAIME RIBEIRO		1	0.82284	Cultivada	Milho	0.82284	6000	4937	Bananeira	9	350	3150	8087
										Mangueira	2	6250	12500	12500
										Cajueiro	3	75	225	225
										Laranjeira	2	420	840	840
		Sub-Total	1	0.82284		0.82284		4937		16		16715		21652
49	MARCELINO FRANCISCO		1	0.746914	Pousio	Nenhuma	0			Mangueira	10	6250	62500	62500
										Cajueiro	2	75	150	150
		Sub-Total	1	0.746914		0		0		12		62650		62650
50	RODRIGUES LAMPSON		1	0.484056	Pousio	Nenhuma	0							
		Sub-Total	1	0.484056		0		0		0		0		0
51	FATIMA ALFREDO		1	0.364567	Cultivada	Feijao-nhemba	0.364567	9600	3500					3500
		Sub-Total	1	0.364567		0.364567		3500		0		0		3500
52	ARTUR FONSECA MANUEL		1	1.681438	Cultivada	Mandioca		55000	92479	Bananeira	22	350	7700	100179
						Tomate	1.681438	?		Mangueira	5	6250	31250	31250
										Cajueiro	2	75	150	150
		Sub-Total	1	1.681438		1.681438		92479		29		39100		131579
53	ASISA AUGUSTA EMILIO		1	0.366056	Pousio	Nenhuma	0							
		Sub-Total	1	0.366056		0		0		0		0		0
54	LUISA FABIO RUAONE		1	0.646451	Pousio	Nenhuma	0			Mangueira	3	6250	18750	18750
			2	0.691131	Cultivada	Milho	0.691131	6000						0
						Feijao-boer		10400	7188					7188
		Sub-Total	2	1.337582		0.691131		7188		3		18750		25938
55	LAURA VALENTIM		1	0.126267	Cultivada	Milho	0.126267	6000		Cajueiro	1	75	75	75
						Amendoim		6400	808					808
		Sub-Total	1	0.126267		0.126267		808		1		75		883
56	EUSEBIO DANIEL JOAO		1	0.159336	Pousio	Nenhuma	0			Mangueira	4	6250	25000	25000
										Cajueiro	4	75	300	300
		Sub-Total	1	0.159336		0		0		8		25300		25300
57	GUNLELA CAMPOS NICUE		1	0.377223	Pousio	Nenhuma	0							
		Sub-Total	1	0.377223		0		0		0		0		0
58	JULIETA NDUHA		1	0.472679	Cultivada	Mandioca	0.472679	55000	25997					25997
						Feijao-boer		10400						
		Sub-Total	1	0.472679		0.472679		25997		0		0		25997
59	FRANCISCO NAHIVINERO		1	0.463674	Pousio	Nenhuma	0							
		Sub-Total	1	0.463674		0		0		0		0		0

Nº do AF	Nome do CF	Machamba (Codigo)	Area da nachamba (ha)	Estado da machamba	Culturas	Area ocupada	Preco unitario da cultura (MZM)	Valor total da cultura (MZM)	Tipo de arvore de fruta	Nº de arvores de fruta	Preco da arvore de fruta	Valor total de arvores de fruta (MZM)	Estruturas de apoio	Total Valuation
60	ALBERTO JOSE NIBODO		1	0.239032	Pousio	Nenhuma	0		Mangueira	1	6250	6250		6250
									Cajueiro	1	75	75		75
		Sub-Total	1	0.239032		0		0		2		6325		6325
61	GELITO ANTONIO		1	0.543798	Cultivada	Feijao-boer	0.543798		Bananeira	4	350	1400		1400
		Sub-Total	1	0.543798		0.543798		0		4		1400		1400
62	LUIS ALFANDEGA		1	1.334987	Cultivada	Mandioca	1.334987	55000	Bananeira	3	350	1050		74474
						Feijao-boer		10400	Mangueira	1	6250	6250		6250
		Sub-Total	1	1.334987		1.334987		73424		4		7300		80724
63	SEBASTIAO MIUME		1	0.161622	Cultivada	Feijao-boer	0.161622	10400						1681
		Sub-Total	1	0.161622		0.161622		1681		0		0		1681
64	FERNANDO SOZINHO		1	0.453633	Cultivada	Feijao-boer	0.453633	10400						4718
		Sub-Total	1	0.453633		0.453633		4718		0		0		4718
65	FERNANDO LAMPIAO		1	0.266806	Pousio	Nenhuma	0		Mangueira	4	6250	25000		25000
		Sub-Total	1	0.266806		0		0		4		25000		25000
66	SIMALGE JOAO		1	0.321329	Cultivada	Milho	0.321329	6000						
						Mapira			21000					
				Feijão-boer		10400								
Sub-Total	1	0.321329		0.321329		6748		0		0		0	6748	
67	JOSE MADEIRA		1	0.426757	Pousio	Nenhuma	0							
		Sub-Total	1	0.426757		0		0		0		0		0
68	ACIDE PEDRO LONDINHO		1	0.569357	Cultivada	Arroz	0.569357	8000	Cajueiro	1	75	75	Poço	4630
			2	0.313482	Pousio	Nenhuma	0							
		Sub-Total	2	0.882839		0.569357		4555		1		75		4630
69	LUDES UASSANANIA		1	0.237761	Cultivada	Milho	0.237761	6000						
						Mandioca			55000					13077
		Feijão-boer		10400										
		Feijão-nhemba		9600										
Sub-Total	1	0.237761		0.237761		13077		0		0		13077		
70	ANTONIO GUNZANHANE		1	0.38682	Pousio	Nenhuma	0							
		Sub-Total	1	0.38682		0		0		0		0		0
71	CATARINA M CARASASSE		1	0.34944	Cultivada	Mandioca	0.34944	55000	Bananeira	15	350	5250		24469
						Feijao-boer		10400	Mangueira	2	6250	12500		12500
		Sub-Total	1	0.34944		0.34944		19219		17		17750		36969
72	ZECA P. MAZAMELA		1	0.444531	Pousio	Nenhuma	0							
		Sub-Total	1	0.444531		0		0		0		0		0
73	GLORIA ALFREDO		1	0.482455	Cultivada	Mandioca	0.482455	55000	Bananeira	17	350	5950		32485
									Mangueira	1	6250	6250		6250
		Sub-Total	1	0.482455		0.482455		26535		18		12200		38735

Nº do AF	Nome do CF	Machamba (Codigo)		Area da nachamba (ha)	Estado da machamba	Culturas	Area ocupada	Preco unitario da cultura (MZM)	Valor total da cultura (MZM)	Tipo de arvore de fruta	Nº de arvores de fruta	Preco da arvore de fruta	Valor total de arvores de fruta (MZM)	Estruturas de apoio	Total Valuation	
74	JUBAR S. BARROSO		1	0.691855	Cultivada	Mandioca	0.691855	55000	38052	Bananeira	3	350	1050		39102	
						Feijao-boer		10400		Mangueira	1	6250	6250	6250	6250	
		Sub-Total	1	0.691855			0.691855			38052		4		7300		45352
75	FANITO H. OLIVEIRA		1	0.507788	Cultivada	Mandioca	0.507788	55000	27928	Mangueira	3	6250	18750		46678	
						Batata-doce		40000								
		Sub-Total	1	0.507788			0.507788			27928		3		18750		46678
76	FERNANDO WARANIGANE		1	0.601012	Cultivada	Mandioca	0.601012	55000	33056						33056	
						Feijão-nhema		9600								
				Batata-doce	40000											
Sub-Total	1	0.601012			0.601012			33056		0		0		33056		
77	MARGARIDA VICENTE		1	0.543637	Cultivada	Milho	0.543637	6000	5654	Mangueira	1	6250	6250		6250	
						Feijao-boer		10400		Cajueiro	2	75	150	5804		
		Sub-Total	1	0.543637			0.543637			5654		3		6400		12054
78	DAUNISA T MACONDE		1	0.73448	Cultivada	Mandioca	0.73448	55000	40396	Mangueira	1	6250	6250		46646	
		Sub-Total	1			0.73448					0.73448			40396		1
79	CLARA FRANCISCO		1	0.306238	Pousio	Nenhuma	0		0	Cajueiro	1	75	75		75	
		Sub-Total	1			0.306238					0			0		1
80	MANUEL DOS SANTOS		1	0.313656	Pousio	Nenhuma	0		0							
		Sub-Total	1			0.313656					0			0		0
81	JOANA B CIPRIANO		1	0.368593	Cultivada	Mandioca	0.368593	55000	20273						20273	
		Sub-Total	1			0.368593					0.368593			20273		0
82	ARGELIO MARIO		1	0.273024	Cultivada	Mandioca	0.273024	55000	15016	Mangueira	1	6250	6250		21266	
						Amendoim		6400								
		Sub-Total	1	0.273024			0.273024			15016		1		6250		21266
83	AGOSTINHO LUIS		1	0.618605	Pousio	Nenhuma	0		0							
		Sub-Total	1			0.618605					0			0		0
84	BERNARDO MOLE		1	0.515852	Cultivada	Mandioca	0.515852	55000	28372						28372	
						Amendoim		6400								
						Feijao-boer		10400								
						Feijão-nhema		9600								
			2	N/A	Cultivada	Mandioca	N/A									
Sub-Total	2	0.515852			0.515852			28372		0		0		28372		
85	SALVADOR FRANCISCO		1	0.554845	Cultivada	Mandioca	0.554845	55000	30516						30516	
		Sub-Total	1			0.554845					0.554845			30516		0
86	ARMANDO ATRETO		1	0.636048	Cultivada	Mandioca	0.636048	55000	34983	Mangueira	1	6250	6250		41233	
						Feijão-boer		10400								
		Sub-Total	1	0.636048			0.636048			34983		1		6250		41233

Nº do AF	Nome do CF	Machamba (Codigo)	Area da nachamba (ha)	Estado da machamba	Culturas	Area ocupada	Preco unitario da cultura (MZM)	Valor total da cultura (MZM)	Tipo de arvore de fruta	Nº de arvores de fruta	Preco da arvore de fruta	Valor total de arvores de fruta (MZM)	Estruturas de apoio	Total Valuation
87	FELICIANO BERNARDO		1	0.471441	Cultivada	Feijao-boer	0.471441	10400	4903	Mangueira	1	6250	6250	11153
		Sub-Total	1	0.471441			0.471441		4903		1		6250	11153
88	SALVADOR MOREIRA		1	0.945975	Cultivada	Mandioca	0.945975	55000	21345	Bananeira	9	350	3150	24495
		Feijão-boer				10400			Mangueira	5	6250	31250	31250	
		Amendoim				6400			Cajueiro	3	75	225	225	
		Feijão-nhemba				9600			Goiabeira	2	1500	3000	3000	
		Sub-Total	1	0.945975			0.945975		21345		19		37625	58970
89	ALMEIDA GRAVATA		1	1.873213	Pousio	Nenhuma	0			Mangueira	7	6250	43750	43750
								Cajueiro	3	75	225	225		
		Sub-Total	1	1.873213			0		0		10		43975	43975
90	JULIO ANGELO		1	0.506196	Pousio	Nenhuma	0			Cajueiro	1	75	75	75
		Sub-Total	1	0.506196			0		0		1		75	75
91	GERONIMO ANTONIO		1	0.595058	Cultivada	Milho	0.595058	6000						
		Mandioca				55000		32728					32728	
		Feijão-boer				10400								
			2	0.968125	Cultivada	Mandioca	0.968125	55000	53247					53247
Sub-Total	2	1.563183			1.563183		85975		0		0	85975		
92	ROSITA SUATERA		1	0.388088	Cultivada	Mandioca	0.388088	55000	21345	Goiabeira	1	1500	1500	22845
								Feijão-boer	10400					
Sub-Total	1	0.388088			0.388088		21345		1		1500	22845		
93	MADALENA SULYAI		1	0.292912	Cultivada	Feijao-boer	0.292912	10400	3046					3046
		Sub-Total	1	0.292912			0.292912		3046		0		0	3046
94	SANTOS MUSENO		1	0.272343	Cultivada	Feijao-boer	0.272343	10400	2832					2832
			2	0.549663	Cultivada	Mandioca	0.549663	55000	30231					30231
						Amendoim		6400						
Sub-Total	2	0.822006			0.822006		33064		0		0	33064		
95	ANGELA ALFREDO		1	0.437089	Cultivada	Feijao-boer	0.437089							
		Sub-Total	1	0.437089			0.437089		0		0		0	0
96	MABNUEL CARLITOS		1	0.143204	Cultivada	Mandioca	0.143204	55000	7876					7876
		Sub-Total	1	0.143204			0.143204		7876		0		0	7876
97	FAZBEM FRANCISCO		1	0.479321	Cultivada	Feijao-boer	0.479321	10400	4985	Cajueiro	1	75	75	5060
		Sub-Total	1	0.479321			0.479321		4985		1		75	5060
98	JAMILO MWEPETA		1	0.883885	Cultivada	Mandioca	0.883885	55000	48614	Bananeira	4	350	1400	50014
		Feijão-nhemba				9600								
		Abóbora				?								
Sub-Total	1	0.883885			0.883885		48614		4		1400	50014		
99	ROFINO EUGENIO		1	0.139157	Cultivada	Mandioca	0.139157	55000	7654					7654
								Feijão-boer	10400					

Nº do AF	Nome do CF	Machamba (Codigo)	Area da nachamba (ha)	Estado da machamba	Culturas	Area ocupada	Preco unitario da cultura (MZM)	Valor total da cultura (MZM)	Tipo de arvore de fruta	Nº de arvores de fruta	Preco da arvore de fruta	Valor total de arvores de fruta (MZM)	Estruturas de apoio	Total Valuation
					Feijão-nhemba		9600							
		Sub-Total	1	0.139157		0.139157		7654		0		0		7654
100	AFONSO EUGENIO		1	0.136984	Cultivada	Mandioca	0.136984	55000	7534	Mangueira	2	6250	12500	20034
						Feijao-nhemba		9600						
						Batata-doce		40000						
			2	0.080844	Cultivada	Mandioca	0.080844	55000	4446					4446
						Feijão-boer		10400						
		Sub-Total	2	0.217828		0.217828		11981		2		12500		24481
101	PACHICHE CASTIANO		1	0.318937	Cultivada	Mandioca	0.318937	55000	17542					17542
			Sub-Total	1	0.318937		0.318937		17542		0		0	
102	DOMINGOS ARNAUA		1	0.13269	Cultivada	Mandioca	0.13269	55000	7298					7298
						Feijão-boer		10400						
		Sub-Total	1	0.13269		0.13269		7298		0		0		7298
103	AUGUSTO BRANQUINHO		1	0.853089	Cultivada	Mandioca	0.853089	55000	46920	Coqueiro	2	1000	2000	48920
						Amendoim		6400						
						Feijao-boer		10400						
						Feijao-nhemba		9600						
			Sub-Total	1	0.853089		0.853089		46920		2		2000	
104	ANTONIO JOSE MARECO		1	0.87128	Cultivada	Milho	0.87128	6000		Bananeiras	14	350	4900	4900
						Mandioca		55000	47920					47920
						Amendoim		6400						
						Batata-doce		40000						
			Sub-Total	1	0.87128		0.87128		47920		14		4900	
105	IZALGINA MARIO		1	2.512479	Cultivada	Mandioca	2.512479	55000	138186	Mangueira	4	6250	25000	163186
						Feijão-boer		10400		Cajueiro	1	75	75	75
						Feijão-nhemba		9600						
	Sub-Total	1	2.512479		2.512479		138186		5		25075		163261	
106	AUGUSTO SETEMANE		1	0.386115	Pousio	Nenhuma	0.386115			Mangueira	1	6250	6250	6250
			Sub-Total	1	0.386115		0.386115		0		1		6250	
107	MANUEL PEDRO		1	0.268041	Pousio	Nenhuma	0.268041							
			Sub-Total	1	0.268041		0.268041		0		0		0	
108	ALICE CEBOLA		1	0.478125	Cultivada	Feijão-boer	0.478125	10400	4973					4973
			Sub-Total	1	0.478125		0.478125		4973		0		0	
109	JOAO CINQUENTA		1	0.503113	Cultivada	Mandioca	0.503113	55000	27671	Bananeiras	112	350	39200	66871
			Sub-Total	1	0.503113		0.503113		27671		112		39200	
110	JOSE MACONTARA		1	0.0769	Cultivada	Mandioca	0.0769	55000	4230					4230
						Feijao Boer		10400						
		Sub-Total	1	0.0769		0.0769		4230		0		0		4230

Nº do AF	Nome do CF	Machamba (Codigo)	Area da nachamba (ha)	Estado da machamba	Culturas	Area ocupada	Preco unitario da cultura (MZM)	Valor total da cultura (MZM)	Tipo de arvore de fruta	Nº de arvores de fruta	Preco da arvore de fruta	Valor total de arvores de fruta (MZM)	Estruturas de apoio	Total Valuation	
111	AUGUSTO DA CONC		1	0.567657	Pousio	Nenhuma	0.567657		Mangueira	1	6250	6250		6250	
		Sub-Total	1	0.567657			0.567657		0		1		6250		6250
112	LIDIA REMIGIO		1	1.047203	Cultivada	Arroz	1.047203	8000	8378	Bananeira	20	350	7000	15378	
		Sub-Total	1	1.047203			1.047203		8378		21		13250		21628
113	REMIGIO RONDA		1	0.908438	Cultivada	Amendoim	0.908438	6400	5814	Bananeira	30	350	10500	16314	
		Sub-Total	1	0.908438			0.908438		5814		30		10500		16314
114	HERMINIO PEQUENINO		1	0.734332	Pousio	Nenhuma	0.734332			Papaeira	1	350	350	350	
		Sub-Total	1	0.734332			0.734332		0		1		350		350
115	JOSE FELIZARDO		1	0.544752	Cultivada	Mandioca	0.544752	55000	29961						29961
		Feijão-nhemba				9600									
		Arroz				8000									
		Batata-doce				40000									
Sub-Total	1	0.544752		0.544752		29961		0		0		29961			
116	NOEL SAMUEL		1	0.434259	Pousio	Nenhuma	0.434259							0	
		Sub-Total	1	0.434259		0.434259		0		0		0		0	
117	LUCIANO NAUHO		1	1.815729	Pousio	Nenhuma	1.815729							0	
		Sub-Total	1	1.815729		1.815729		0		0		0		0	
118	ABILO JANEIRO		1	4.848581	Cultivada	Mandioca	4.848581	55000	266672	Cajueiro	2	75	150	266822	
		Sub-Total		4.848581		4.848581			266672		2		150		266822
119	DALILA DA GRACA		1	0.452672	Cultivada	Mandioca	0.452672	55000	24897					24897	
		Sub-Total	1	0.452672		0.452672			24897		0		0		24897
120	HORTENCIA ALFREDO		1	0.303736	Cultivada	Mandioca	0.303736	55000	16705	Bananeira	12	350	4200	20905	
		Sub-Total	1	0.303736		0.303736		16705		12		4200		20905	
121	DANIEL ANIBAL		1	0.55325	Cultivada	Milho	0.55325	6000		Mangueira	2	6250	12500	12500	
		Sub-Total	1	0.55325		0.55325			3541		2		12500		16041
122	GRACINDA ALBERTO		1	0.984946	Cultivada	Mandioca	0.984946	55000	54172	Mangueira	1	6250	6250	60422	
			2	0.102151	Cultivada	Mandioca	0.102151	55000	5618	Cajueiro	2	75	150	5768	
		Sub-Total	2	1.087097		1.087097		59790		4		6750		66540	
123	BENJAMIM MATECO		1	1.824404	Cultivada	Mandioca	1.824404	55000	100342	Bananeira	18	350	6300	106642	
		Feijao Boer				10400			Mangueira	6	6250	37500	37500		
									Cajueiro	10	75	750	750		
Sub-Total	1	1.824404		1.824404		100342		34		44550		144892			
124	CARLITOS PEQUENINO		1	0.677078	Cultivada	Milho	0.677078	6000		Bananeira	4	350	1400	Alpendre	1400

Nº do AF	Nome do CF	Machamba (Codigo)	Area da nachamba (ha)	Estado da machamba	Culturas	Area ocupada	Preco unitario da cultura (MZM)	Valor total da cultura (MZM)	Tipo de arvore de fruta	Nº de arvores de fruta	Preco da arvore de fruta	Valor total de arvores de fruta (MZM)	Estruturas de apoio	Total Valuation
					Mandioca		55000	37239						37239
					Feijão-boer		10400							
					Batata-doce		40000							
		Sub-Total	1	0.677078		0.677078		37239		4		1400		38639
125	ARCANJO JOSE NICOLAO		1	0.441003	Cultivada	Amendoim	0.441003	6400						4586
					Feijão-boer		10400	4586						4586
		Sub-Total	1	0.441003		0.441003		4586		0		0		4586
126	ANGELO AMARO		1	0.60336	Cultivada	Milho	0.60336	6000	Mangueira	1	6250	6250		6250
					Mandioca		55000	33185						33185
					Amendoim		6400							
					Feijão-boer		10400							
		Sub-Total	1	0.60336		0.60336		33185		1		6250		39435
127	DANIEL PEDRO		1	0.365644	Pousio	Nenhuma	0.365644		Mangueira	1	6250	6250		6250
		Sub-Total	1	0.365644		0.365644		0		1		6250		6250
128	ISAC JOAQUIM		1	0.21807	Cultivada	Milho	0.21807	6000	Mangueira	1	6250	6250		6250
					Mandioca		55000	11994						11994
					Feijão-boer		10400							
					Batata-doce		40000							
		Sub-Total	1	0.21807		0.21807		11994		1		6250		18244
129	LUCAS TOMAS		1	0.234072	Pousio	Nenhuma	0.234072							
		Sub-Total	1	0.234072		0.234072		0		0		0		0
130	LUIS ROFINO		1	0.520511	Cultivada	Mandioca	0.520511	55000	Cajueiro	1	75	75		28703
					Feijão-boer		10400	10400	Goiabeira	2	1500	3000		3000
					Feijão-nhemba		9600							
			2	0.146078	Cultivada	Mandioca	0.146078	55000						8034
					Feijão-boer		10400	8034						8034
		Sub-Total	2	0.666589		0.666589		36662		3		3075		39737
131	EUSEBIO NAVELA		1	0.594291	Pousio	Nenhuma	0.594291							
		Sub-Total	1	0.594291		0.594291		0		0		0		0
132	ABEL ANTONIO		1	0.307381	Cultivada	Mandioca	0.307381	55000	Mangueira	1	6250	6250		23156
					Feijao Boer		10400	10400						
		Sub-Total	1	0.307381		0.307381		16906		1	6250	6250		23156
133	ALVARO JOAO		1	0.268636	Cultivada	Mandioca	0.268636	55000	Mangueira	30	6250	187500		202275
									Cajueiro	4	75	300		300
		Sub-Total	1	0.268636		0.268636		14775		34		187800		202575
134	AGOSTINHO PAULINO		1	0.840232	Cultivada	Feijao Boer	0.840232	10400	Mangueira	1	6250	6250		14988
									Cajueiro	1	75	75		75
									Goiabeira	4	1500	6000		6000

Nº do AF	Nome do CF	Machamba (Codigo)	Area da nachamba (ha)	Estado da machamba	Culturas	Area ocupada	Preco unitario da cultura (MZM)	Valor total da cultura (MZM)	Tipo de arvore de fruta	Nº de arvores de fruta	Preco da arvore de fruta	Valor total de arvores de fruta (MZM)	Estruturas de apoio	Total Valuation
		Sub-Total	1	0.840232		0.840232		8738		6		6325		15063
135	JAIME ANTONIO		1	0.689285	Cultivada									
					Mandioca	0.689285	55000	37911	Mangueira	1	6250	6250		44161
					Feijao-Nhemba		9600		Cajueiro	1	75	75		75
		Sub-Total	1	0.689285		0.689285		37911		2		6325		44236
136	BERNARDO PEDRO		1	1.931532	Cultivada									
					Milho	1.931532	6000		Mangueira	1	6250	6250		6250
					Mandioca		55000	106234	Cajueiro	1	75	75		106309
					Amendoim		6400							
					Feijão-boer		10400							
					Feijão Nhemba		9600							
		Sub-Total	1	1.931532		1.931532		106234		2		6325		112559
137	MATIAS MACAVANE		1	0.332737	Cultivada									
					Mandioca	0.332737	55000	18301						18301
		Sub-Total	1	0.332737		0.332737		18301		0		0		18301
138	ANTONIO AMELA		1	0.430066	Cultivada				Mangueira	1	6250	6250		6250
		Sub-Total	1	0.430066		0.430066		0		1		6250		6250
139	JULIETA PEDRO		1	0.217576	Pousio				Mangueira	2	6250	12500		12500
					Nenhuma	0.217576			Laranjeira	1	420	420		420
		Sub-Total	1	0.217576		0.217576		0		3		12920		12920
140	LUISA ETAGA		1	0.320577	Pousio									
		Sub-Total	1	0.320577		0.320577		0		0		0		0
141	CACILIA DA SILVA		1	0.519653	Cultivada									
					Milho	0.519653	6000		Bananeira	9	350	3150		3150
					Mandioca		55000	28581	Mangueira	4	6250	25000		53581
					Amendoim		6400							
					Gergelim		?							
					Feijão-boer		10400							
		Sub-Total	1	0.519653		0.519653		28581		13		28150		56731
142	MANUEL CALADO		1	0.14479	Cultivada									
					Milho	0.14479	6000							
					Mandioca		55000	7963						7963
					Amendoim		6400							
					Feijão-boer		10400							
					Feijão-nhemba		9600							
		Sub-Total	1	0.14479		0.14479		7963		0		0		7963
143	ANGELINA SOZINHO		1	2.128165	Pousio				Mangueira	1	6250	6250		6250
		Sub-Total	1	2.128165		2.128165		0		1		6250		6250
144	ERMELINDO ANTONIO		1	0.901357	Cultivada									
					Milho	0.901357	6000							
					Amendoim		6400							
					Feijão-boer		10400	9374						9374
					Feijão-nhemba		9600							
		Sub-Total	1	0.901357		0.901357		9374		0		0		9374

Nº do AF	Nome do CF	Machamba (Codigo)	Area da nachamba (ha)	Estado da machamba	Culturas	Area ocupada	Preco unitario da cultura (MZM)	Valor total da cultura (MZM)	Tipo de arvore de fruta	Nº de arvores de fruta	Preco da arvore de fruta	Valor total de arvores de fruta (MZM)	Estruturas de apoio	Total Valuation		
145	ELIUAS ANGELO		1	0.206013	Pousio	Nenhuma	0.206013		Goiabeira	32	1500	48000		48000		
		Sub-Total	1	0.206013			0.206013	0		32		48000		48000		
146	LUIS MESA		1	0.166732	Cultivada	Milho	0.166732	6000	Bananeira	3	350	1050		1050		
						Mandioca		55000	9170	Mangueira	1	6250	6250		15420	
						Amendoim		6400								
						Feijão-boer		10400								
						Feijão-nhemba		9600								
		Sub-Total	1	0.166732		0.166732		9170		4		7300		16470		
147	MOISES VICTOR		1	0.598011	Cultivada	Milho	0.598011	6000	Bananeira	12	350	4200		4200		
						Mandioca		55000	32891					32891		
						Amendoim		6400								
						Feijão-boer		10400								
						Feijão-nhemba		9600								
		Sub-Total	1	0.598011		0.598011		32891		12		4200		37091		
148	FERNANDO JOAO		1	0.226295	Pousio	Nenhuma	0.226295		Mangueira	2	6250	12500		12500		
		Sub-Total	1	0.226295			0.226295	0		2		12500		12500		
149	FERNANDO SOZINHO		1	0.216448	Pousio	Nenhuma	0.216448		Bananeira	21	350	7350		7350		
		Sub-Total	1	0.216448			0.216448	0		21		7350		7350		
150	BONEFACIO MUATEPULA		1	0.172765	Pousio	Nenhuma	0.172765		Mangueira	15	6250	93750		93750		
		Sub-Total	1	0.172765			0.172765	0		15		93750		93750		
151	JULIANO ANTONIO		1	0.515041	Pousio	Nenhuma										
		Sub-Total	1	0.515041			0	0		0		0		0		
152	VIDAL IMPUANO		1	0.717702	Pousio	Nenhuma										
		Sub-Total	1	0.717702			0	0		0		0		0		
153	JEMUSSE AGUACEIRO		1	0.083126	Cultivada	Feijão Nhemba	0.083126	9600						798		
						Abóbora		?								
						Tomate		?								
		Sub-Total	1	0.083126		0.083126		798		0		0		798		
154	SANTO ELIAS		1	0.645902	Cultivada	Mandioca	0.645902	55000	Cajueiro	1	75	75		35600		
						Feijão Nhemba		9600								
		Sub-Total	1	0.645902		0.645902		35525		1		75		35600		
155	JOAZINHO RICARDO		1	0.580394	Pousio											
		Sub-Total	1	0.580394			0	0		0		0		0		
156	MADALENA TELEGRAMA		1	0.116458	Cultivada	Feijão Boer	0.116458	10400						1211		
		Sub-Total	1	0.116458			0.116458	1211		0		0		1211		
157	ALEXANDRE MANGACAO		1	0.651333	Cultivada	Mandioca	0.651333	55000	Cajueiro	4	75	300		36123		
						Amendoim		6400	Mangueira	2	6250	12500		12500		
						Feijão Boer		10400								

Nº do AF	Nome do CF	Machamba (Codigo)		Area da nachamba (ha)	Estado da machamba	Culturas	Area ocupada	Preco unitario da cultura (MZM)	Valor total da cultura (MZM)	Tipo de arvore de fruta	Nº de arvores de fruta	Preco da arvore de fruta	Valor total de arvores de fruta (MZM)	Estruturas de apoio	Total Valuation	
		Sub-Total	1	0.651333			0.651333		35823		6		12800		48623	
158	OLIVEIRA JOSE		1	0.433293	Cultivada	Milho	0.433293	6000								
						Amendoim		6400								
						Feijão boer		10400	4506							4506
						Feijão jugo		7200								
						Feijão nhemba		9600								
		Sub-Total	1	0.433293			0.433293		4506		0		0		4506	
159	ANGELO AMARO		1	0.666824	Cultivada	Milho	0.666824	6000								
						Amendoim		6400								
						Feijão Boer		10400	6935							6935
						Feijão Nhemba		9600								
		Sub-Total	1	0.666824				0.666824		6935		0		0		6935
160	SALIMO NIVAVIVA		1	0.710013	Pousio	Nenhuma	0			Mangueira	1	6250	6250		6250	
		Sub-Total	1	0.710013					0		1		6250		6250	
161	ADINANE LUCAS		1	0.800066	Pousio	Nenhuma	0									
			2	0	Pousio	Nenhuma	0									
		Sub-Total	2	0.800066					0		0		0		0	
162	DINIS GERENTE		1	0.430755	Cultivada	Mandioca	0.430755	55000	23692	Bananeira	7	350	2450		26142	
						Feijão Boer		10400								
						Feijão Nhemba		9600								
						Abóbora		?								
		Sub-Total	1	0.430755			0.430755		23692		7		2450		26142	
163	TARZAN MARIO		1	0.350436	Cultivada	Mandioca	0.350436	55000	19274						19274	
		Sub-Total	1	0.350436			0.350436		19274		0		0		19274	
164	RAZANO VICIAL		1	0.489444	Pousio	Nenhuma				Cajueiro	1	75	75		75	
										Mangueira	1	6250	6250		6250	
		Sub-Total	1	0.489444			0		0		2		6325		6325	
165	ANTONIO JOSE		1	0.070118	Pousio	Nenhuma										
		Sub-Total	1	0.070118			0		0		0		0		0	
166	CRISTIANO CASTIANO		1	0.254077	Pousio	Nenhuma										
			2	0.325352	Cultivada	Amendoim	0.325352	6400	2082						2082	
		Sub-Total	2	0.579429			0.325352		2082		0		0		2082	
167	ELISEU NICOSSE		1	0.941442	Pousio	Nenhuma				Mangueira	1	6250	6250		6250	
		Sub-Total	1	0.941442			0		0		1		6250		6250	
168	DANIEL SANTOS		1	1.291575	Cultivada	Milho	1.291575	6000		Cajueiro	4	75	300		300	
						Mandioca		55000	71037	Mangueira	1	6250	6250		77287	
						Amendoim		6400								
						Feijão Nhemba		9600								

Nº do AF	Nome do CF	Machamba (Codigo)		Area da nachamba (ha)	Estado da machamba	Culturas	Area ocupada	Preco unitario da cultura (MZM)	Valor total da cultura (MZM)	Tipo de arvore de fruta	Nº de arvores de fruta	Preco da arvore de fruta	Valor total de arvores de fruta (MZM)	Estruturas de apoio	Total Valuation
		Sub-Total	1	1.291575			1.291575		71037		5		6550		77587
169	JOANA ALBERTO AVFELI		1	1.408584	Cultivada	Milho	1.408584	6000		Mangueira	1	6250	6250		6250
		Mandioca				55000		77472					77472		
		Amendoim				6400									
		Feijão Boer				10400									
		Feijão jugo				9600									
Sub-Total	1	1.408584			1.408584		77472		1		6250		83722		
170	LUIS ROQUE		1	0.600928	Cultivada	Arroz	0.600928	8000	4807						4807
		Sub-Total	1	0.600928			0.600928		4807		0		0		4807
171	JORGE NAMACUSSA		1	1.527184	Cultivada	Milho	1.527184	6000		Bananeira	204	350	71400		71400
		Amendoim				6400			Cajueiro	13	75	975		975	
		Feijão Boer				10400		15883	Mangueira	5	6250	31250		47133	
		Sub-Total				1		1.527184			1.527184		15883		222
172	OCTAVIO BASILIO		1	0.728742	Cultivada	Milho	0.728742	6000							
		Amendoim				6400									
		Feijão Boer				10400		7579							
		Feijão jugo				7200									
		Sub-Total				1		0.728742			0.728742		7579		0
173	TERESA EUGENIO		1	0.294844	Cultivada	Milho	0.294844	6000							
		Mandioca				55000		16216							
		Amendoim				6400									
		Feijão Boer				10400									
		Feijão Nhemba				9600									
Sub-Total	1	0.294844			0.294844		16216		0		0		16216		
174	ALFREDO A NIBODO		1	0.487572	Cultivada	Mandioca	0.487572	55000	26816	Mangueira	1	6250	6250		33066
		Sub-Total	1	0.487572			0.487572		26816		1		6250		33066
175	ARTUR DINIS MULOIUA		2	N/A	Cultivada	Mandioca	N/A	55000	18970	Bananeira	20	350	7000		25970
		Mandioca							Cajueiro	10	75	750		750	
		Amendoim							Coqueiro	1	1000	1000		1000	
		Feijão Boer							Laranjeira	4	420	1680		1680	
		Gergelim							Limoeiro	3	120	360		360	
									Mangueira	15	6250	93750		93750	
									Papaeira	1	600	600		600	
Sub-Total	1	0.344916			0.344916		18970		54		105140		124110		
176	SIDALIA R TOMAS		1	0.754931	Pousio	Nenhuma									
		Sub-Total	1	0.754931			0		0		0		0		0
177	FERNANDO EUGENIO		1	0.548915	Pousio	Nenhuma				Mangueira	1	6250	6250		6250
		Sub-Total	1	0.548915			0		0		1		6250		6250

Nº do AF	Nome do CF	Machamba (Codigo)	Area da nachamba (ha)	Estado da machamba	Culturas	Area ocupada	Preco unitario da cultura (MZM)	Valor total da cultura (MZM)	Tipo de arvore de fruta	Nº de arvores de fruta	Preco da arvore de fruta	Valor total de arvores de fruta (MZM)	Estruturas de apoio	Total Valuation	
178	AMERICO CUNHEVO		0.323943	Pousio	Nenhuma										
		Sub-Total	1	0.323943			0		0		0		0		0
179	SILVERIO MAJAMANDO		1.018691	Pousio	Nenhuma				Cajueiro	2	75	150		150	
		Sub-Total	1	1.018691			0		0		2		150		150
180	LOURENCO MANUEL		0.208332	Cultivada	Nenhuma	0.208332			Bananeira	40	350	14000		14000	
		Sub-Total	1	0.208332			0.208332		0		40		14000		14000
181	EUSENIA ATIANA		0.31451	Cultivada	Mandioca	0.31451	55000	17298						17298	
		Sub-Total	1	0.31451			0.31451		17298		0		0		17298
182	ADELIA FABIAO		0.129456	Pousio	Nenhuma										
		Sub-Total	1	0.129456			0		0		0		0		0
183	FELIZ ARTUR		0.107659	Cultivada	Mandioca	0.107659	55000	5921						5921	
					Feijão Nhemba		9600								
			2	N/A	Cultivada	Amendoim	N/A								
					Feijao Boer										
Sub-Total	2	0.107659			0.107659		5921			0		0		5921	
184	JAOQUINA ARMANDO		0.353434	Cultivada	Mandioca		55000	19439	Mangueira	3	6250	18750		38189	
					Amendoim	0.353434	6400								
					Feijão Boer		10400								
					Feijão Nhemba		9600								
Sub-Total	1	0.353434			0.353434		19439		3		18750		38189		
185	ZEFERINO PORTUGUES		3.96591	Cultivada	Milho		6000		Bananeira	7	350	2450		2450	
					Mandioca		55000	218125	Cajueiro	76	75	5700		223825	
					Amendoim	3.96591	6400		Mangueira	4	6250	25000		25000	
					Feijão Boer		10400								
					Batata doce		40000								
Sub-Total	1	3.96591			3.96591		218125		87		33150		251275		
186	LYUCAS HERMINIO		0.190762	Cultivada	Milho		6000		Limoeiro	1	120	120		120	
					Mandioca	0.190762	55000	10492						10492	
					Feijão Boer		10400								
					Feijão jugo		7200								
					Batata doce		40000								
Sub-Total	1	0.190762			0.190762		10492		1		120		10612		
187	VALDIMIRO PEDRO		0.979234	Cultivada	Milho		6000		Cajueiro	1	75	75		75	
					Mandioca	0.979234	55000	53858	Mangueira	2	6250	12500		66358	
					Amendoim		6400								
					Feijão jugo		7200								
					Feijão Nhemba		9600								
Sub-Total	1	0.979234			0.979234		53858		3		12575		66433		

Nº do AF	Nome do CF	Machamba (Codigo)		Area da nachamba (ha)	Estado da machamba	Culturas	Area ocupada	Preco unitario da cultura (MZM)	Valor total da cultura (MZM)	Tipo de arvore de fruta	Nº de arvores de fruta	Preco da arvore de fruta	Valor total de arvores de fruta (MZM)	Estruturas de apoio	Total Valuation
188	LUIS JACINTO	1	2.848075	Cultivada	Feijão Boer	2.848075	10400		Bananeira	26	350	9100		9100	
					Feijão Nhemba		9600								
					Batata doce		40000	113923					113923		
					Cana-de-açucar		?								
		2	1.542765	Cultivada	Milho	1.542765	6000		Cajueiro	59	75	4425		4425	
					Mandioca		55000	84852	Coqueiro	4	1000	4000	88852		
					Amendoim		6400		Mangueira	10	6250	62500	62500		
					Feijão Boer		10400		Papaeira	2	600	1200	1200		
Feijão jugo	7200														
Sub-Total	2	4.39084		4.39084		198775		101		81225		280000			
189	ANTUNES MUEVESSORO	1	0.639018	Pousio	Nenhuma										
Sub-Total	1	0.639018		0		0		0		0		0		0	
190	PEDRO EUGENIO	1	0.149761	Pousio	Nenhuma										
Sub-Total	1	0.149761		0		0		0		0		0		0	
191	MANUEL JULIO	1	0.388189	Cultivada	Milho	0.388189	6000								
					Mandioca		55000	21350							
					Amendoim		6400								
					Feijão Nhemba		9600								
Sub-Total	1	0.388189		0.388189		21350		0		0		21350			
192	ERNESTO MANGULETE	1	0.577347	Cultivada	Tomate	0.577347	?								
Sub-Total	1	0.577347		0.577347		0		0		0		0		0	
193	ROSARIO MULAUA	1	0.300177	Cultivada	Milho	0.300177	6000		Mangueira	1	6250	6250		6250	
					Mandioca		55000	16510					16510		
					Amendoim		6400								
					Feijão Boer		10400								
					Feijão Nhemba		9600								
Sub-Total	1	0.300177		0.300177		16510		1		6250		22760			
194	JOSE MUIRA	1	0.889255	Cultivada	Mandioca	0.889255	55000	48909	Bananeira	57	350	19950		68859	
					Feijão Nhemba		9600		Cajueiro	1	75	75	75		
					Batata doce		40000		Mangueira	1	6250	6250	6250		
					Arroz		8000								
Sub-Total	1	0.889255		0.889255		48909		59		26275		75184			
195	CARLOS MUANAVAVA	1	0.649271	Cultivada	Milho	0.649271	6000		Bananeira	1	350	350		350	
					Amendoim		6400	4155					4155		
		Sub-Total	1	0.649271		0.649271		4155				350		4505	
196	LUIA CUNHETE	1	2.356399	Pousio	Nenhuma	2.356399			Bananeira	37	350	12950		12950	
									Cajueiro	1	75	75		75	
									Mangueira	8	6250	50000		50000	

Nº do AF	Nome do CF	Machamba (Codigo)		Area da nachamba (ha)	Estado da machamba	Culturas	Area ocupada	Preco unitario da cultura (MZM)	Valor total da cultura (MZM)	Tipo de arvore de fruta	Nº de arvores de fruta	Preco da arvore de fruta	Valor total de arvores de fruta (MZM)	Estruturas de apoio	Total Valuation		
		Sub-Total	1	2.356399			2.356399		0		46		63025		63025		
197	AUGUSTO MUZENA		1	0.235722	Cultivada	Milho	0.235722	6000									
						Mandioca		55000	12965					12965			
						Amendoim		6400									
						Feijão Boer		10400									
						Feijão Nhemba		9600									
		Sub-Total	1	0.235722			0.235722		12965		0		0		12965		
198	MADALENA VICTOR		1	0.626149	Cultivada	Nenhuma	0.626149										
			Sub-Total	1	0.626149			0.626149		0		0		0		0	
199	ANTONIO LUIS		1	0.158318	Cultivada	Milho	0.158318	6000			Mangueira	1	6250	6250		6250	
						Mandioca		55000	8707					8707			
						Amendoim		6400									
						Feijão Boer		10400									
						Feijão Nhemba		9600									
			2	0.517724	Cultivada	Milho	0.517724	6000									
		Mandioca				55000		28475					28475				
		Amendoim				6400											
		Feijão Boer				10400											
		Sub-Total	2	0.676042			0.676042		37182		1		6250		43432		
200	MAZIDE ANTONIO		1	0.117329	Cultivada	Mandioca	0.117329	55000	6453	Bananeira	1	350	350		6803		
					Feijão Nhemba	9600											
		Sub-Total	1	0.117329			0.117329		6453		1		350		6803		
201	EUGENIA MULALEIA		1	0.445006	Cultivada	Mandioca	0.445006	55000	24475	Cajueiro	1	75	75		24550		
						Amendoim		6400									
			2	0.344574	Cultivada	Milho	0.344574	6000			Mangueira	2	6250	12500		12500	
						Amendoim		6400									
				Sub-Total	2	0.78958			0.78958		28059		3		12575		40634
202	FRANCISCO PEDRO		1	1.225296	Cultivada	Mandioca	1.225296	55000	67391	Cajueiro	1	75	75		67466		
						Mapira		21000									
						Amendoim		6400									
						Feijão Boer		10400									
		Sub-Total	1	1.225296			1.225296		67391		1		75		67466		
203	ALVES NATAMILO		1	0.47822	Cultivada	Milho	0.47822	6000		Mangueira	1	6250	6250		6250		
						Feijão Boer		10400	4973						4973		
	2	0.095565	Cultivada	Milho	0.095565	6000		573						573			
Cana-de-açúcar																	

Nº do AF	Nome do CF	Machamba (Codigo)	Area da nachamba (ha)	Estado da machamba	Culturas	Area ocupada	Preco unitario da cultura (MZM)	Valor total da cultura (MZM)	Tipo de arvore de fruta	Nº de arvores de fruta	Preco da arvore de fruta	Valor total de arvores de fruta (MZM)	Estruturas de apoio	Total Valuation
		Sub-Total	2	0.573785				5547		1		6250		11797
204	JACINTA BERNARDO		1	0.368147	Pousio	Nenhuma	0.368147							
		Sub-Total	1	0.368147			0.368147	0		0		0		0
205	AGOSTINHO LUIS		1	0.227247	Cultivada	Mandioca	0.227247	55000	Bananeira	1	350	350		12849
						Amendoim		6400						
		Sub-Total	1	0.227247			0.227247	12499		1		350		12849
206	SANTOS NAUELA		1	0.103644	Pousio	Nenhuma	0.103644							
		Sub-Total	1	0.103644			0.103644	0		0		0		0
207	ARLINDO COMPANHEIRO		1	0.200929	Pousio	Nenhuma	0.200929		Bananeira	10	350	3500	Poço	3500
		Sub-Total	1	0.200929			0.200929	0		10		3500		3500
208	CASSIMO ARLINDO		1	0.883459	Cultivada	Milho		6000	Cajueiro	1	75	75		75
						Mandioca	0.883459	55000						48590
						Amendoim		6400						0
						Feijão Boer		10400						0
		Sub-Total	1	0.883459			0.883459	48590		1		75		48665
209	MORAIS ALFREDO		1	1.089084	Cultivada	Amendoim	1.089084	6400						11326
						Feijão Boer		10400						
			2	0.562916	Pousio	Nenhuma	0							
		Sub-Total	2	1.652			1.089084	11326		0		0		11326

Pressupostos: em machambas com mais de uma cultura, uma vez que a pratica é em regime de consociação de culturas, optou-se por utilizar a cultura de maior valor para calcular o valor a compensar.

Fonte: Tabela do Distrito de Mocuba



Valores que não constam na tabela



Machambas que precisam ser medidas novamente; informação que necessita ser confirmada no campo
Agregados familiares vulneráveis

Appendix 4

Vulnerability types per family

**PROJECT TO BUILD A PHOTOVOLTAIC POWER STATION
IN MOCUBA, ZAMBEZIA PROVINCE**

AFnº / Cartão nº	Nome do entrevistado	Relação com o Chefe AF	Género	Idade	Tipo de vulnerabilidade
2	VISERNA SAVAIO	Chefe do af	Feminino	73	VIÚVA
2	EZIO FELICIANO	Outra	Masculino	22	HIV
3	JOAQUINA J MACUIA	Chefe do af	Feminino	50	MULHER CHEFE DE FAMÍLIA
3	ARLINDO LUIS	Filho(a)	Masculino	20	DEFICIÊNCIA FÍSICA
4	BELILA MEDIA	Esposa do cf	Feminino	40	PESSOA COM DOENÇA
5	LUCIA INDIA	Chefe do af	Feminino	53	VIÚVA
7	ISABEL MUSSURMAQUE	Chefe do af	Feminino	40	VIÚVA
8	VICTORINO SABONETE	Chefe do af	Masculino	62	PESSOA IDOSA (ACIMA DE 60 ANOS)
8	ZENITO DOMINGO	Outra	Masculino	16	CRIANÇA ORFÃ
10	AMELIA AGOSTINHO	Chefe do af	Feminino	33	MÃE SOLTEIRA
11	MUNAVIANA CEMENTE	Sogro(a)	Feminino	82	VIÚVA
13	MAULIDA MATHESSO	Chefe do af	Feminino	35	MÃE SOLTEIRA
13	VIVI RONDINHO	Filho(a)	Feminino	5	PESSOA COM DOENÇA
14	EDGAR FRANCISCO	Filho(a)	Masculino	26	DEFICIÊNCIA FÍSICA
16	RAQUETA NIHALELANE	Chefe do af	Feminino	70	MÃE SOLTEIRA
16	GLORIA MONIZ	Filho(a)	Feminino	20	MÃE SOLTEIRA
16	JOHN AFONSO	Outra	Masculino	9	DEFICIÊNCIA FÍSICA
18	ROSA ARAUJO	Chefe do af	Feminino	66	MÃE SOLTEIRA
19	OFELIA ORLANDO	Chefe do af	Feminino	36	MÃE SOLTEIRA
20	MARIA JOAO	Chefe do af	Feminino	47	MULHER CHEFE DE FAMÍLIA
20	CRISTINA EDUARDO	Filho(a)	Feminino	27	MÃE SOLTEIRA

**PROJECT TO BUILD A PHOTOVOLTAIC POWER STATION
IN MOCUBA, ZAMBEZIA PROVINCE**

21	MUSSIQUETELA ANGOLA	Pai/mãe	Masculin o	80	PESSOA IDOSA (ACIMA DE 60 ANOS)
23	ADELINA PEQUENINO	Chefe do af	Feminino	57	MÃE SOLTEIRA
23	MARTA LUCIANO	Filho(a)	Feminino	20	DIFICIENCIA AUDITIVA
24	LUCIA MUALATE	Chefe do af	Feminino	59	VIÚVA
25	CARLITOS MONIZ	Chefe do af	Masculin o	62	PESSOA IDOSA (ACIMA DE 60 ANOS)
27	AUGUSTO MUCUALE	Chefe do af	Masculin o	60	DEFICIÊNCIA FÍSICA
28	ADELINA MUNHOGA	Chefe do af	Feminino	75	PESSOA IDOSA (ACIMA DE 60 ANOS)
29	CLEMENTINA MANUELA	Chefe do af	Masculin o	77	VIÚVA
30	LUISA MANUEL RIBEIRO	Chefe do af	Feminino	50	MULHER CHEFE DE FAMÍLIA
30	NEIDE AMILCAR	Filho(a)	Feminino	18	MÃE SOLTEIRA
30	AMANCIA JONE	Outra	Feminino	3	NÃO SABE / NÃO RESPONDE
31	NANCY VICTORINO	Outra	Feminino	10	CRIANÇA ORFÃ
31	LURDINA VICTORINO	Outra	Feminino	9	CRIANÇA ORFÃ
31	IVANILDO NESTINHO	Outra	Masculin o	8	CRIANÇA ORFÃ
31	THINTCHIM NESTINHO	Outra	Masculin o	0	CRIANÇA ORFÃ
32	SARA FLAVIANO	Outra	Feminino	15	CRIANÇA ORFÃ
32	AGNALDO FLAVIANO	Outra	Masculin o	10	CRIANÇA ORFÃ
32	PONCIANO FLAVIANO	Outra	Masculin o	9	CRIANÇA ORFÃ
32	EUFRASIA FLAVIANO	Outra	Feminino	6	CRIANÇA ORFÃ
33	PAULINA INTABELA	Chefe do af	Feminino	72	VIÚVA
34	LILIANA FRANCISCO	Outra	Feminino	14	PESSOA COM DOENÇA
35	FRANCISCA JOAO	Chefe do af	Feminino	75	VIÚVA
36	VANILDO ESTEVAO	Outra	Feminino	13	CRIANÇA ORFÃ
36	FARIZANA EVARISTO	Outra	Feminino	12	CRIANÇA ORFÃ
36	MICAS MANUEL	Outra	Masculin o	13	CRIANÇA ORFÃ
36	MAIDENE MANUEL	Outra	Masculin o	9	CRIANÇA ORFÃ

**PROJECT TO BUILD A PHOTOVOLTAIC POWER STATION
IN MOCUBA, ZAMBEZIA PROVINCE**

36	INACIO MANUEL	Outra	Masculino	18	CRIANÇA ORFÃ
37	RAQUETA PAULO	Chefe do af	Feminino	47	OUTRA
37	LIDIA VICTORINO	Filho(a)	Feminino	18	MÃE SOLTEIRA
39	LIDIA SOZINHO	Chefe do af	Feminino	52	OUTRA
41	ADELINA SANTOS	Chefe do af	Feminino	58	OUTRA
41	NADIA CARLITOS	Filho(a)	Feminino	20	MÃE SOLTEIRA
42	AMELIA SANTOS	Chefe do af	Feminino	39	OUTRA
42	FLAVIA VICENTE	Filho(a)	Feminino	17	MÃE SOLTEIRA
42	XADREQUE JULIO	Outra	Masculino	18	CRIANÇA ORFÃ
42	DELITO JULIO	Outra	Masculino	13	CRIANÇA ORFÃ
42	LEVE JULIO	Outra	Masculino	12	CRIANÇA ORFÃ
43	LAURINDA ANTONIO	Chefe do af	Feminino	49	OUTRA
43	PALMIRA VIRGILIO	Filho(a)	Feminino	12	DEFICIÊNCIA FÍSICA
44	ARNALDO BENTO	Outra	Masculino	5	PESSOA COM DOENÇA
45	AMINA PEDRO	Pai/mãe	Feminino	71	OUTRA
47	LIMITADA MANGACAO	Chefe do af	Masculino	65	PESSOA IDOSA (ACIMA DE 60 ANOS)
47	ZINHA LIMITADA	Filho(a)	Feminino	17	MÃE SOLTEIRA
47	DEDINHA LIMITADA	Filho(a)	Feminino	30	MÃE SOLTEIRA
49	MARCELINO FRANCISCO	Chefe do af	Masculino	22	DEFICIÊNCIA FÍSICA
51	MARIA PAULO	Filho(a)	Feminino	18	PESSOA COM DOENÇA
52	ARTUR MANUEL	Chefe do af	Masculino	74	OUTRA
52	MADALENA SULVAI	Esposa do cf	Feminino	61	OUTRA
54	LINO MATEMATE	Chefe do af	Masculino	74	PESSOA IDOSA (ACIMA DE 60 ANOS)
57	GUNLELA CAMPOS NICUE	Chefe do af	Feminino	78	OUTRA
58	JULIETA NDUHA	Chefe do af	Feminino	65	OUTRA

**PROJECT TO BUILD A PHOTOVOLTAIC POWER STATION
IN MOCUBA, ZAMBEZIA PROVINCE**

58	GAWENHERANE NIHELO	Pai/mãe	Feminino	85	OUTRA
59	MAURICIO FRANCISCO	Filho(a)	Masculino	3	PESSOA COM DOENÇA
60	CONSTANCIO ALBERTO	Filho(a)	Masculino	5	DEFICIÊNCIA FÍSICA
62	ANA PAULA LUIS	Filho(a)	Feminino	5	PESSOA COM DOENÇA
65	CANDIDA FERNANDO	Filho(a)	Feminino	18	MÃE SOLTEIRA
65	ANAPaula FERNANDO	Filho(a)	Feminino	16	MÃE SOLTEIRA
65	RISUAN ADAMO	Outra	Masculino	2	PESSOA COM DOENÇA
68	ACIDO LONDINHO	Chefe do af	Masculino	51	PESSOA COM DOENÇA
68	JULIA NIVAVIHA	Esposa do cf	Feminino	37	PESSOA COM DOENÇA
68	BONEFACIO HILARIO	Outra	Masculino	18	CRIANÇA ORFÃ
69	LURDE UASSANANIA	Chefe do af	Feminino	74	OUTRA
70	MANUEL JOAO	Outra	Masculino	15	CRIANÇA ORFÃ
71	CATARINA CARACASSE	Chefe do af	Feminino	68	OUTRA
73	AMBROSIO ALFREDO	Cunhado(a)	Masculino	53	DEFICIENCIA MENTAL
74	XARIFO JUBAR	Filho(a)	Masculino	16	DIFICIENCIA AUDITIVA
77	MARGARIDA VICENTE	Chefe do af	Feminino	50	VIÚVA
77	CARLITOS MARIO	Outra	Masculino	18	DEFICIENCIA MENTAL
77	PELI SALIMO	Outra	Masculino	15	CRIANÇA ORFÃ
77	FARUK SALIMO	Outra	Masculino	13	CRIANÇA ORFÃ
77	JAGUAR SALIMO	Outra	Masculino	11	CRIANÇA ORFÃ
77	SARA SALIMO	Outra	Feminino	9	CRIANÇA ORFÃ
78	DAUNISA T MACONDE	Chefe do af	Feminino	71	VIÚVA
83	AGOSTINHO LUIS	Chefe do af	Masculino	35	DEFICIÊNCIA FÍSICA

**PROJECT TO BUILD A PHOTOVOLTAIC POWER STATION
IN MOCUBA, ZAMBEZIA PROVINCE**

83	ZITO AGOSTINHO	Filho(a)	Masculino	13	SURDO
83	NOEMIA AGOSTINHO	Filho(a)	Feminino	10	DEFICIÊNCIA FÍSICA
84	BERNARDO MOLE	Chefe do af	Masculino	78	PESSOA IDOSA (ACIMA DE 60 ANOS)
88	SALVADOR MOREIRA	Chefe do af	Masculino	71	OUTRA
88	ROSA PINTO	Esposa do cf	Feminino	63	PESSOA IDOSA (ACIMA DE 60 ANOS)
90	JULIO ANGELO	Chefe do af	Masculino	36	PESSOA COM DOENÇA
91	ANABELA GERONIMO	Filho(a)	Feminino	22	MÃE SOLTEIRA
92	ROSITA SUATERA	Chefe do af	Feminino	47	MULHER CHEFE DE FAMÍLIA
92	MELUCHA AUGUSTO	Filho(a)	Feminino	8	PESSOA COM DOENÇA
93	MADALENA SULYAI	Chefe do af	Feminino	61	PESSOA IDOSA (ACIMA DE 60 ANOS)
95	ANGELINO ALFREDO	Chefe do af	Feminino	49	MULHER CHEFE DE FAMÍLIA
96	ROSA SIAMANTO	AvÔ/avÓ	Feminino	80	OUTRA
97	ROSA AUGUSTO	AvÔ/avÓ	Feminino	78	OUTRA
100	AFONSO TAVA	Chefe do af	Masculino	40	PESSOA COM DOENÇA
100	JON AFONSO	Filho(a)	Masculino	11	DEFICIENCIA MENTAL
101	ANGELO RACHIDE	Filho(a)	Masculino	9	DEFICIÊNCIA FÍSICA
105	IZALGINA NAMALUPA	Chefe do af	Feminino	41	MULHER CHEFE DE FAMÍLIA
106	EUGENIO AUGUSTO	Filho(a)	Masculino	10	PESSOA COM DOENÇA
108	ALICE CEBOLA	Chefe do af	Feminino	75	OUTRA
108	EDILSON HORACIO	Outra	Masculino	12	CRIANÇA ORFÃ
108	EMILTON ADOLFO	Outra	Masculino	9	CRIANÇA ORFÃ
108	AURELIO ANDRE	Outra	Masculino	6	CRIANÇA ORFÃ
109	JOAO CINQUENTA	Chefe do af	Masculino	74	PESSOA IDOSA (ACIMA DE 60 ANOS)
109	ANGELINA	Esposa do	Feminino	69	PESSOA IDOSA (ACIMA DE 60

**PROJECT TO BUILD A PHOTOVOLTAIC POWER STATION
IN MOCUBA, ZAMBEZIA PROVINCE**

	LAMPISSONE	cf			ANOS)
110	JOSE MACONTARA	Chefe do af	Masculino	61	PESSOA IDOSA (ACIMA DE 60 ANOS)
112	LIDIA REMIGIO	Chefe do af	Feminino	39	MULHER CHEFE DE FAMÍLIA
113	REMIGIO RONDA	Chefe do af	Masculino	73	PESSOA IDOSA (ACIMA DE 60 ANOS)
114	HERMINIO PEQUENINO	Chefe do af	Masculino	52	DEFICIÊNCIA FÍSICA
114	ESPERANCA HERMINIO	Filho(a)	Feminino	13	PESSOA COM DOENÇA
114	OSVALDO HERMINIO	Filho(a)	Masculino	12	PESSOA COM DOENÇA
115	GREGORIO JOAQUIM	Outra	Masculino	4	PESSOA COM DOENÇA
115	ANTONIO AUGUSTO	Outra	Masculino	14	OUTRA
115	ALBERTINA AUGUSTO	Outra	Feminino	13	CRIANÇA ORFÃ
117	DALILA LUCIANO	Filho(a)	Feminino	30	VIÚVA
117	ALICIANA LUCIAMO	Filho(a)	Feminino	30	VIÚVA
117	EDI COSTA	Outra	Masculino	16	MÃE SOLTEIRA
117	WALTER DA COSTA	Outra	Masculino	12	CRIANÇA ORFÃ
117	RICHA DA COSTA	Outra	Masculino	6	CRIANÇA ORFÃ
117	QUELVE DA COSTA	Outra	Masculino	3	CRIANÇA ORFÃ
118	LIDIA BAPTISTA	Esposa do cf	Feminino	34	DEFICIÊNCIA FÍSICA
119	DALILA PENEIRA	Chefe do af	Feminino	39	MULHER CHEFE DE FAMÍLIA
119	GILDA ILANIO	Outra	Feminino	14	CRIANÇA ORFÃ
119	GENIA ILANIO	Outra	Feminino	12	CRIANÇA ORFÃ
119	VIVIA ILANIO	Outra	Feminino	10	OUTRA
119	EDSON ILANIO	Outra	Masculino	7	CRIANÇA ORFÃ
120	LISEU DANIEL	Outra	Masculino	4	CRIANÇA ORFÃ
120	JOAQUIM ALFREDO	Irmão/irmã	Feminino	40	PESSOA COM DOENÇA
121	JORDAO DANIEL	Filho(a)	Masculino	22	PESSOA COM DOENÇA

**PROJECT TO BUILD A PHOTOVOLTAIC POWER STATION
IN MOCUBA, ZAMBEZIA PROVINCE**

122	GRACINDA SETEMANE	Chefe do af	Feminino	69	OUTRA
122	JULIO MANUEL	Filho(a)	Masculino	15	DEFICIENCIA MENTAL
124	CONCEICAO JOSE	Outra	Feminino	20	MÃE SOLTEIRA
127	DERCIA DANIEL	Filho(a)	Feminino	10	DEFICIENCIA AUDITIVA
128	ANALISA DOS SANTOS	Irmão/irmã	Feminino	29	MÃE SOLTEIRA
131	EUSEBIO NAVELA	Chefe do af	Masculino	61	PESSOA IDOSA (ACIMA DE 60 ANOS)
132	CURIANA CAMPO	Sogro(a)	Feminino	73	PESSOA IDOSA (ACIMA DE 60 ANOS)
134	AMINA JAIME	Esposa do cf	Feminino	28	PESSOA COM DOENÇA
137	EUGENIA NANHALO	Esposa do cf	Feminino	64	
137	ESTRELA FERNANDO	Filho(a)	Feminino	27	MÃE SOLTEIRA
137	ANTONIO JOAO	Cunhado(a)	Masculino	60	DEFICIÊNCIA FÍSICA
138	ANTONIO AMELA	Chefe do af	Masculino	77	PESSOA IDOSA (ACIMA DE 60 ANOS)
139	JULIETSA PEDRO	Chefe do af	Feminino	76	OUTRA
140	LUISA ETAGA	Chefe do af	Feminino	80	OUTRA
141	CECILIA NAMAELA	Chefe do af	Feminino	48	OUTRA
141	INES ARLINDO	Filho(a)	Feminino	22	MÃE SOLTEIRA
141	TERESA ARLINDO	Filho(a)	Feminino	20	MÃE SOLTEIRA
142	MANUEL AMBROSIO	Chefe do af	Masculino	62	PESSOA IDOSA (ACIMA DE 60 ANOS)
142	BEATRIZ MANUEL	Filho(a)	Feminino	19	MÃE SOLTEIRA
143	ANGELA PANAVE	Chefe do af	Feminino	58	VIÚVA
146	VICTORIA LUIS	Filho(a)	Feminino	17	DEFICIENCIA MENTAL
146	SONIA LUIS	Filho(a)	Feminino	10	OUTRA
147	SARA MOISES	Filho(a)	Feminino	25	MÃE SOLTEIRA
148	FERNANDO JOAO	Chefe do af	Masculino	80	PESSOA IDOSA (ACIMA DE 60 ANOS)
148	ISABEL NICOLOCO	Esposa do cf	Feminino	68	PESSOA IDOSA (ACIMA DE 60 ANOS)
151	JULIANO ANTONIO	Chefe do	Masculino	74	OUTRA

**PROJECT TO BUILD A PHOTOVOLTAIC POWER STATION
IN MOCUBA, ZAMBEZIA PROVINCE**

		af	o		
151	BERTA NAHINNE	Esposa do cf	Feminino	65	PESSOA IDOSA (ACIMA DE 60 ANOS)
152	VIDAL NALELO	Chefe do af	Masculin o	64	PESSOA IDOSA (ACIMA DE 60 ANOS)
152	BELITA MACAVA	Esposa do cf	Feminino	60	PESSOA IDOSA (ACIMA DE 60 ANOS)
152	LUISA CESAR	Outra	Feminino	11	CRIANÇA ORFÃ
152	JEOVA CESAR	Outra	Masculin o	12	CRIANÇA ORFÃ
152	JAMILA CESAR	Outra	Feminino	10	CRIANÇA ORFÃ
155	JOAOZINHO RICARDO	Chefe do af	Masculin o	40	DEFICIÊNCIA FÍSICA
155	VERONICA JOAOZINHO	Filho(a)	Feminino	20	PESSOA COM DOENÇA
156	MADALENA TELEGRAMA	Chefe do af	Feminino	56	OUTRA
156	DIOLINDA VIRGILIO	Filho(a)	Feminino	17	DEFICIÊNCIA FÍSICA
156	FIDEL EVARISTO	Outra	Masculin o	14	CRIANÇA ORFÃ
156	ROSARIO EVARISTO	Outra	Masculin o	9	CRIANÇA ORFÃ
156	ESPERANCA EVARISTO	Outra	Feminino	5	CRIANÇA ORFÃ
157	ALEXANDRE MANGACAO	Chefe do af	Masculin o	65	PESSOA IDOSA (ACIMA DE 60 ANOS)
157	ANASTACIA ALEXANDRE	Filho(a)	Feminino	28	PESSOA COM DOENÇA
157	ISAIDA ALEXANDRE	Filho(a)	Feminino	20	MÃE SOLTEIRA
161	SIDINE ADINANE	Chefe do af	Masculin o	47	PROBLEMA DE VISTA
161	OLINDO ALBERTO	Irmão/irm Ã	Masculin o	49	DEFICIENCIA MENTAL
161	AGOSTINHO MARCOS	Outra	Masculin o	15	CRIANÇA ORFÃ
163	ABEL TARZAN	Filho(a)	Masculin o	20	DEFICIÊNCIA FÍSICA
163	IRANIA TARZAN	Filho(a)	Feminino	18	MÃE SOLTEIRA
165	ATIJA LUCIANO	Irmão/irm Ã	Feminino	15	MÃE SOLTEIRA
166	CRISTINA CORDEIRO	Chefe do af	Feminino	45	MULHER CHEFE DE FAMÍLIA
167	ELISEU NICOSSE	Chefe do af	Masculin o	65	OUTRA

**PROJECT TO BUILD A PHOTOVOLTAIC POWER STATION
IN MOCUBA, ZAMBEZIA PROVINCE**

169	JOANA AVELINO	Chefe do af	Feminino	39	MULHER CHEFE DE FAMÍLIA
169	ARMANDO EMILIO	Filho(a)	Masculino	12	DEFICIÊNCIA FÍSICA
170	LUIS ROQUE	Chefe do af	Masculino	62	PESSOA IDOSA (ACIMA DE 60 ANOS)
172	SAIDE ANTONIO	Irmão/irmã	Masculino	6	CRIANÇA ORFÃ
176	ANTONIO SAJONE	Chefe do af	Masculino	62	SOFRE DE RINS
179	SILVERIO MAJAMANDA	Chefe do af	Masculino	56	PESSOA COM DOENÇA
179	ILDA SILVERIO	Filho(a)	Feminino	34	OUTRA
181	EUGENIA NACARANI	Chefe do af	Feminino	55	MULHER CHEFE DE FAMÍLIA
182	ADELIA FABIAO	Chefe do af	Feminino	37	OUTRA
182	ALJOFRE FABIO	Irmão/irmã	Masculino	10	CRIANÇA ORFÃ
182	MILAIDE FABIO	Irmão/irmã	Feminino	8	CRIANÇA ORFÃ
183	AMINA FELIZ	Filho(a)	Feminino	4	DEFICIENCIA AUDITIVA
184	OAQUINA MUNHALA	Chefe do af	Feminino	59	OUTRA
185	ZEFERINO NIHUMA	Chefe do af	Masculino	74	PESSOA IDOSA (ACIMA DE 60 ANOS)
185	MARGARIDA MAGALA	Esposa do cf	Feminino	60	PESSOA COM DOENÇA
188	LUIS MUTANAGUE	Chefe do af	Masculino	42	DEFICIÊNCIA FÍSICA
191	CRISTINA MANUEL	Cunhado(a)	Feminino	18	DEFICIENCIA MENTAL
196	LUISA CUNHETE	Chefe do af	Feminino	49	VIÚVA
197	SILVA MUSSAMARIA	Outra	Masculino	30	DEFICIÊNCIA FÍSICA
197	DOMINGA MUSSAMARIA	Outra	Feminino	28	MÃE SOLTEIRA
197	JOZEFA PONPICIO	Outra	Feminino	18	OUTRA
198	MADALENA TULIUA	Chefe do af	Feminino	48	VIÚVA
199	MARIANA PEQUENINO	Pai/mãe	Feminino	52	OUTRA

**PROJECT TO BUILD A PHOTOVOLTAIC POWER STATION
IN MOCUBA, ZAMBEZIA PROVINCE**

200	FAUSIA CARLITO	Outra	Feminino	10	CRIANÇA ORFÃ
201	EUGENIA MULALEIA	Chefe do af	Feminino	70	OUTRA
202	LUCIA FRANCISCO	Filho(a)	Feminino	22	MÃE SOLTEIRA
202	EMANUEL DAVIDE	Outra	Masculino	4	DEFICIENCIA MENTAL
204	JACINTA BERNARDO	Chefe do af	Feminino	44	MULHER CHEFE DE FAMÍLIA
204	IVONE JOSE	Filho(a)	Feminino	27	MÃE SOLTEIRA
206	SANTOS NAUELA	Chefe do af	Masculino	39	PROBLEMA DE AUDICAO
206	SIMONE SANTOS	Filho(a)	Masculino	6	PESSOA COM DOENÇA
206	OLINDA SANTOS	Filho(a)	Feminino	0	PESSOA COM DOENÇA

Appendix 5

**MODELS OF
CLAIM REGISTRATION FORM (MODEL 1)
AND
CLAIM RESOLUTION REPORT
(MODEL 2)**

**PROJECT TO BUILD A PHOTOVOLTAIC POWER STATION
IN MOCUBA, ZAMBEZIA PROVINCE**

MODEL 1

Claim Registration Form			
Claim Nr. (to be completed by the LC)		Date	
Name of person filing the claim		Village/Neighbourhood	
ID Nr. of person filing the claim		Census Registration Number (if applicable)	
Contact of person filing the claim		Claim filed by (name and title):	
Detailed Description of the Claim			
Pictures and /or support documents (insert reference and attach copy)			

**PROJECT TO BUILD A PHOTOVOLTAIC POWER STATION
IN MOCUBA, ZAMBEZIA PROVINCE**

MODEL 2

Claim Resolution Report			
Claim Nr.		Date Claim Was Received	
Name of person filing the claim		Village/Neighbourhood	
ID Nr. of person filing the claim		Census Registration Number (if applicable)	
Contact		Issue Solved By	
Description of the Resolution Measure Taken			
Acceptance of the Resolution Measure Applied by the Person Filing the Claim			
<p>I _____, declare that my claim was handled in a timely and effective manner, and I declare that I agree with the resolution measure proposed and implemented.</p>			
Name of the person filing the claim:			
Signature (or fingerprint) of the person filing the claim:			
Officer Name:			
Officer Signature:			
Witness Name:			
Witness Signature:			

**PROJECT TO BUILD A PHOTOVOLTAIC POWER STATION
IN MOCUBA, ZAMBEZIA PROVINCE**