

AES Sonel

Kribi Power Project 150 MW Gas Plant & 225kV Transmission Line Cameroon

Community and Indigenous People's Plan

December 2007



Table of Contents

1	Introduction	6
2	CIPP Methodology	9
2.1	Socio-Economic Baseline	9
2.2	Consultation Process	10
3	Main Findings	12
3.2	Bakola people and the legal framework.....	12
3.3	Socio-Economic Baseline	13
3.3.2	Estimation of Project Impacts on the Bakola Communities	20
3.4	Consultation Findings.....	21
3.4.1	Stakeholder Mapping of Natural Resources.....	21
3.4.2	Benefits of the Transmission Line to the locality	23
3.4.3	Livelihood issues and measures to address negative issues with the Bakola	24
3.4.4	Livelihood issues and measures to address negative issues with the Bantou.....	27
4	Summary of Community Development Priorities	29
4.1.1	Bakola Community Development Priorities.....	29
4.1.2	Bantou Village Development Priorities	29
4.2	Community and Indigenous Peoples Plan	30
4.3	Community and Indigenous Peoples Plan 5Year Framework	Erreur ! Signet non défini.
4.4	CIPP Implementation Gant Chart.....	36
5	Bibliography	37
	Appendix 1 Socio Economic Baseline Questionnaire.....	38

List of Tables

Table 1- Age Distribution.....	15
Table 2- Summary of Main Project Impacts on Kola Communities residing in Project Area.....	21
Table 3 & Table 4 –Natural Resources affected by the Transmission Line in the Bakola and Bantu Communities.....	21
Table 5 & Table 6 – Perceived Benefits of the Transmission Line by the Bakola and Bantu Communities	23
Table 7 – Negative livelihood issues in the Bakola Communities	24
Table 8 – Development Measures as indicated by the Bakola Communities.....	26
Table 9 – Negative Livelihood issues in the Bantu Communities.....	27
Table 10 - Development Measures as indicated by the Bantu Communities	28

Abbreviations

AfDB	African Development Bank
CIPP	Community and Indigenous Peoples Plan
CDP	Community Development Plan
CBOs	Community Based Organizations
DFI's	Development Finance Institutions
ESD	Edéa Subdivision
ESIA	Environmental and Social Impact Assessment
FAO	Food Agricultural Organization
IFC	International Financial Cooperation
KSD	Kribi Subdivision
NGO	Non Governmental Organizations
PAP	Project Affected People
RAP	Resettlement Action Plan
ROW	Right of Way
ToR	Terms of Reference
SEB	Socio-Economic Baseline
SME	Small & Medium Enterprises
SMFE	Small & Medium Forest Enterprises
SW	Scott Wilson

“We Pygmies are also human beings. We were living in this forest before these villagers claiming now to be our patrons joined us. The forest was our life: we were in the forest and the forest in us. They (the Bantou) asked us to come and live here. The result is bad. You have vehicles, clothes and money. Do you want us to be like you now that we are living in villages like the Bantou¹?”

“Unfortunately, nobody is taking care of us. We are abandoned. Logging companies don’t care about us. We see them every day going into the forest of our ancestors and our spirits, to log timber. Maybe one day we will go back to the forest, our forest, but to do what and to live how? The Government is ignoring us².”

1 www.cifor.cgiar.org

2 www.cifor.cgiar.org

1 Introduction

- 1.1.1.1 The Kribi Power Project comprises the construction of a 150 MW power plant fuelled with natural gas that will be located approximately 9 km north-east of Kribi in the South Province and the erection of a 100 km 225 kV transmission line between this proposed plant and the existing Mangombe 225/90 kV substation at Edéa in the Littoral province. In addition, there will be a new step up substation at the new plant site (11kV to 225 kV) and a new 225 kV bay for connection at the Mangombe substation³.
- 1.1.1.2 The transmission line will be approximately 100km in length with a 30 metre wide corridor with 15 metres from either side of the main axis of the transmission line. This 30 metre wide corridor is called the right of way (ROW).
- 1.1.1.3 The transmission line will go through the Littoral Province (35Km) and the South Province (65km). In the Littoral Province, the transmission line will pass through 11 villages namely Apouh (APO), Koukoue (KOU), Beon (BEO), Nlonamioh (NLO), Mbanda (MBA) Malimba Farm (MALF), Ekite1, 2, & 3, (EKI 1, 2 & 3) Ekite Pilote (EKIP) and Malimba Urbain (MALU). In the South Province it will go through 15 villages namely Mpolongwe 2 (MPO2), Bebambwe 1, 2 (BEB1 &2), Ebea (EBE), Fifinda1 & 2 (FIF1 & 2), Londji2 (LON), Bipaga 1 & 2 (BIP1 & 2) Pama (PAM), Bivouba (BIV), Mbebe (MBE), Elogbatindi (ELO), Dehane (DEH), and Bonguen (BON).
- 1.1.1.4 The 150 MW Power Plant will be located in Mpolongwe 2 within an area of approximately 16ha.
- 1.1.1.5 This project will be financed by the DFIs and will therefore follow World Bank and International Financial Corporation (IFC) guidelines and standards. As such, both the Environmental and Social Impact Assessment (ESIA) and the Resettlement Action Plan (RAP) have already been elaborated.
- 1.1.1.6 Due to the proximity of the project area to vulnerable indigenous groups the World Bank and IFC asked AES SONEL to prepare a Community and Indigenous Peoples Plan (CIPP) as part of the overall Kribi power generation project to meet the requirements of Operational Policy (“OP”) 4.10 and Performance Standard (“PS”) 7, respectively, by addressing the avoidance and mitigation of project impacts on Indigenous Peoples.

³ Scott Wilson “Environmental Impact Assessment Report for the Kribi Power Project, Cameroon” 2007

1.1.1.7 The World Bank's TOR presented to AES SONEL required a comprehensive Community and Indigenous Peoples Plan (CIPP) that would:

- Elucidate the magnitude and nature of the impacts from the transmission line project on the communities, with particular attention as to how the Bakola/Kola will be impacted;
- Describe the consultation and planning process that was undertaken in formulating the CIPP, demonstrating that the principles of free, prior and informed consultation and informed participation were followed;
- Frame the on-going process of public consultation that will be undertaken to ensure continued participation by all stakeholders;
- Identify other possible stakeholders for developing and implementing the Community and Indigenous Peoples plan, including such possible partners as NGOs;
- Define the roles and responsibilities of KPDC staff, government, local authorities, traditional community leadership, civil society and other stakeholders in relation to implementing the Community and Indigenous Peoples plan;
- Identify and prioritize specific community development projects for implementation in the short term that will minimize, mitigate and/or compensate for the identified impacts of the project (including scheduling, costing and responsibility for implementation);
- Provide an overall framework and guidance to KPDC (and other stakeholders) on how best to take a proactive and consistent stance on community development initiatives that are linked to the project;
- Identify opportunities for (i) culturally-appropriate development benefits from the project that are commensurate with the project impacts and (ii) for fostering the long-term sustainability of the natural resources on which the communities depend; and
- Describe how the Community and Indigenous Peoples Plan will be monitored, evaluated and integrated into the social and environmental management system of KPDC

1.1.1.8 Under this context AES SONEL's requested Scott Wilson to elaborate the CIPP and provide an assessment of the project impacts on their livelihood. This led to the current community and indigenous peoples plan, which includes a separate baseline study, consultation process and mapping of resource utilisation.

1.1.1.9 The community and indigenous peoples plan is composed of:

- The Socio-Economic Baseline (including legal framework)
- The Consultation Process (including mapping of natural resources used)
- It will follow the subsequent structure:

2. Methodology

3. Main Findings

- 3.1 Legal Framework
- 3.2 Socio-Economic Baseline
- 3.3 Consultation Process (including resource mapping)

4. Community Development Priorities

- 4.1 Community Action Plan

2 CIPP Methodology

2.1 Socio-Economic Baseline

- 2.1.1.1 The Bakola's socio-economic baseline (SEB) study was conducted at the same time as the Resettlement Action Plan SEB and used the same team of surveyors (SEB survey team) and questionnaire.
- 2.1.1.2 It comprised of quantitative methods such as the employment of a questionnaire as well as semi-structured informal interviews with key stakeholders such as the Bantou and Bakola traditional chiefs, local consultants experienced in the area. The semi-structured informal interviews allowed Scott Wilson to obtain additional information on the Bakola people as well as cross reference the information obtained from the questionnaire.
- 2.1.1.3 The SEB survey team was trained in conducting the questionnaire before the start of the survey and the questionnaire was pre-tested and modified according to the characteristics of the area.
- 2.1.1.4 The socio-economic baseline (SEB) survey team identified which villages, from the project area, the Bakola people lived in from the respective village chiefs, which also provided with an estimate of the number of existing households in each village. The SEB team planned to conduct interviews for 50% of the existing households.
- 2.1.1.5 In total the Bakola Ethnic group is located among 4 villages in the South Province (Bipaga 1, Bonguen, Elogbatindi and Bivouba) and according to the traditional leaders of each village in June 2007, there was an estimated total of 30 households. The survey team conducted the SEB survey for 18 households (60%) of the estimated 30.
- 2.1.1.6 The SEB survey team comprised an experienced team leader, two senior surveyors and three junior surveyors. The SEB survey was undertaken between the 30th May and the 1st June 2007. It was undertaken using an extensive socio-economic questionnaire (see Appendix 1) that covered several areas of the household's daily life, leisure time, education and health of the household, livelihood assets, income, main activities, religion, cultural aspects, and others. In addition, literature review regarding the legal and institutional framework applicable to the Bakola was also undertaken.

2.2 Consultation Process

2.2.1.1 The consultation sought to expand on the socio-economic baseline data gathered and comprised of four tasks and a gender and intergenerational consultation framework that was culturally appropriate to the Bakola. It was participatory from the outset and used a range of tools adapted from PRA, SARAR and BA methodologies⁴:

- (i) Natural Resource Use mapping
- (ii) Key Project Stakeholder identification.
- (iii) Assessment of potential adverse and positive impacts
- (iv) Identification and evaluation of measures to avoid adverse effects.

2.2.1.2 An initial stakeholder analysis was carried out with the project staff of AES Sonel to identify the key stakeholders that required further consultation. These were the four Bakola communities living alongside Bantou villages, within the Kribi-Edéa transmission line corridor. In line with the guidance, the stakeholders were broken down into three groups within each community, men, women and young people.

2.2.1.3 The consultation process was initiated by a visit to the Bantou and Bakola chiefs of Bipaga 1, Bivouba, Elogbatindi and Bonguen villages. Each chief was presented with gifts and a request to meet with the communities within their respective village settings. They were requested to arrange discussion groups comprising of men, women and young people respectively. The Bakola groups' size ranged between 8 and 20 participants and the Bantou between 20 and 40 participants respectively

2.2.1.4 The participatory consultation process was further facilitated by the use of translators in the Bakola communities and through French in the Bantou villages to avoid creating unnecessary inequities for other poor and marginal social groups.

2.2.1.5 The process took place over a period of six days and started with stakeholder mapping of natural resources. This enabled an assessment of the respective communities' natural capital assets and the perceived effect of the transmission line upon them.

2.2.1.6 The initial assessment was followed by semi-structured discussions with the respective groups, men, women and youth, to identify the perceived benefits of the transmission line

⁴ A set of three participatory methodologies for consulting and collaborating with local-level stakeholders- Participatory Rural Appraisal (PRA), Self Esteem, Associative strength, Resourcefulness, Action planning and Responsibility (SARAR) and Beneficiary Assessment (BA)

including livelihood issues within their communities and measures to ameliorate the negative issues.

2.2.1.7 Pair wise ranking exercises were used to identify three priority measures to investigate further.

2.2.1.8 The groups then participated in drawing up basic action plans for each of the three priorities identified. This process assisted the groups to identify the activities required to achieve the respective measures, the available resources that they were able to contribute, and the resources needed. It also identified the people who would be responsible and determined their indicators of success.

2.2.1.9 Finally, semi-structured interviews were carried out with each of the four Bakola chiefs to discuss land rights and to develop an action plan for the legal recognition of ownership of Bakola land by the Bakola people.

3 Main Findings

3.1.1.1 This section is going to look at the main findings obtained from the literature review (regarding the legal framework), the socio-economic baseline study and the consultation process and natural resource mapping.

3.2 Bakola people and the legal framework

3.2.1.1 According to the existing legal framework in Cameroon, the “pygmy” people are citizens equal to other natives in Cameroon (Preamble of the constitution of 18/1/1996). In practice, they are neither represented in any of the 339 councils in Cameroon, nor in the state administration nor the parliament and not a single Bakola is working as a civil servant⁵.

3.2.1.2 According to Schmidt-Soltau, K 2003, one of the main reasons for this lack of Bakola representation is the fact that most of them do not hold ID cards or birth certificates which are essential to vote during elections. The President of the Republic of Cameroon - Paul Biya - made clear, that “the pygmies are not different from any other Cameroonian citizen” (Biya quoted in: Logo 2002), but to act as an equal citizen, the Bakola need ID-cards.

According to the World Bank’s Community Development Program Support Project⁶, the whole procedure of getting an ID card costs around 15,000CFCA⁷ (approximately US\$25), which is far beyond the financial capacities of most Bakola. According to Schmidt-Soltau, K 2003 and later on evidenced by the SEB survey undertaken, the average total annual cash income per capita among the Bakola is said to be around 24,300 CFCA (US\$ 50).

3.2.1.3 Land Rights

3.2.1.4 One of the legacies of the colonial period was that all land was considered under national law to be property of the state even though almost all land is also held under customary principles. There were however exceptions made for titled land or cultivated and developed land (the owners of the later would gain inheritable usufructory rights). However only 2.3% of Cameroon’s land has been titled since 1974 (FAO, 2004)

3.2.1.5 Furthermore, even though the law granted customary rights, there was nothing that identified a definite territory where hunters/gatherers (recognized as not only being the “first inhabitants of

5 Indigenous People Development Program for the Forestry and Environmental Sectoral Program (IPP86)

6 http://www-wds.worldbank.org/servlet/WDSContentServer/WDSP/IB/2004/02/19/000104615_20040219092013/Rendered/PDF/ISDS0P073629.pdf

7 This includes additional costs such as transport and additional payments, however the official cost is 6,000 CFCA

the forest”, but also of having their livelihoods heavily dependant on the forest and forest resources) would gain full control of the resource, i.e. the inheritable rights.

3.2.1.6 In 1994, the Government of Cameroon undertook a reform of the forest laws (The 1994 Law and its 1995 Decree of Application on wildlife (Wildlife Decree) in order to recognize traditional custodians of wildlife resources as partners in the resource management exercise. These were enacted on the assumption that resources are better managed when their local custodians have shared or exclusive rights to make decisions and benefit from their use.

3.2.1.7 Unfortunately, this legislation is not targeted at hunter-gatherers despite the 1995 Wildlife Decree’s mention of community hunting zones and, the concept of traditional hunting rights as conceived by the Cameroon legislators does not reflect reality. As such, the gap between hunting rights as set out in the legislation and traditional hunting right as they are actually practiced by forest dwellers is excessively wide and has caused a deep mistrust between communities and wildlife services⁸.

3.2.1.8 The Indigenous groups are thus losing a battle for their livelihood as mainly commercial logging; agriculture and even over hunting are taking away their land and reducing their livelihood. This survival insecurity is exacerbated by their unequal access to the law and the fact that their hunting and gathering way of life is not recognized as a valid livelihood system in forests upon which they have long relied.

3.3 Socio-Economic Baseline

3.3.1.1 This section describes the particular social and economic characteristics of the Bakola people and the indirect impact the project will have on them.

There are three main indigenous ethnic groups, formerly known as ‘Pygmies’ in Cameroon: (i) The Aka (which encompass Mbezele, Bayaka and Babinga groups) that are located along the border of Cameroon with Central African Republic with permanent links with Ubangians and Bantou groups; (ii) The Baka (which encompass Bebayaka, Bibaya, Babinga and Bangombe groups) that are in the Southeast Province and east of South Province of Cameroon. These are mainly linked with the Bantous and Ubangians; (iii) The Kola (which encompass the Gyele, Bagyele, Bagiele, Bajeli, Bogyeli, Bako, Bekoe, Bakola, Babinga) that are located in west of

⁸According to ODI ,2001“Rural development Forest Network, Traditional hunting is authorised throughout the national territory except in State forests protected for wildlife conservation or on the property of third parties. It is legally defined as hunting using material made of plant origin, and can only be undertaken for subsistence consumption –never commercial transactions. Traditional hunting may be forbidden or regulated where it endangers the conservation of certain species and in protected areas where it is subject to the area’s management plan. Small reptiles, birds and other class C animals may be hunted

South province of Cameroon and are linked with the Bassa, Ngumba, Mabea, Batanga and Iyasa

9

- 3.3.1.2 The main group found in the project area (west of South Province) is the Bagieli, which are considered to be part of the Bakola ethnic group.
- 3.3.1.3 The Bakola people live in the rainforest of Cameroon together with various other ethnic groups. They are a people of hunters and gatherers. In the Project area, 30 Bakola households were identified, all in the KSD. Of these 30 households, 18 (equivalent to 77 household members) were interviewed in order to obtain a better understanding of their socio-economic characteristics. Only one household will be directly affected by the project, i.e. has his crops within the ROW, and will be compensated accordingly and as per the RAP.
- 3.3.1.4 Note that the number of households interviewed is not considered statistically significant to provide a 95% confidence level of accuracy, due to the small number of total households. As such, the main analysis that follows will give absolute values as well as percentages. In addition, it should be noted that the majority of the respondents did not speak French, therefore the traditional leader of the neighbouring Bantou communities usually helped with the translation, which might have influenced some of the replies given in some instances.
- 3.3.1.5 Demographic Information & Household Characteristics
- 3.3.1.6 According to the SEB survey, the average family size of a Bakola household is around 4.3, which is slightly lower than the average size of the KSD obtained in the SEB survey (5.3). In addition, the SEB survey showed that the household mainly consists of Head of Household (24%), Wife (20%), Sons/Daughters (42%) and Grandchildren (13%).
- 3.3.1.7 Regarding marital status, the majority (15 out of 18) of the heads of households were married and they were all monogamous. In other words, they only had one wife. This is in line with the statistics found with their neighbouring communities.
- 3.3.1.8 Age and Gender Distribution
- 3.3.1.9 Of the 18 households interviewed only two family members were over the age of 60 years old, which could be an indication of their low life expectancy¹⁰, which in turn could be a proxy indicator for low-income status and health status.

9 Schmidt-Soltau, K. 2003.

10 According to the World Bank, the average life expectancy in the world is 67 years old.

Table 1- Age Distribution

Age Range	0-14	15-59	60+
Percentage of Total Population	43.1%	51.3%	5.6%
Baka People interviewed	44%	52%	3%

3.3.1.10 Within the households interviewed, 63% of the respondents were male whilst only 37% were female. In addition, when looking at the sex of the head of the household this distribution changes dramatically with 100% of the heads of the household being male.

3.3.1.11 Religion

3.3.1.12 According to Schmidt-Soltau, K 2003, the Bakola are animist and worship a forest spirit known as *Jengi* or *Djengi*, whom they perceive as both a parental figure and guardian. However, according to the interviews the majority indicated Catholicism as their main religion, which could possibly indicate the practice of both religious beliefs. Nonetheless, their animist religion reflects the importance that the forest means to them. As such, forest loss as a result of the project will have an additional impact, which will need to be mitigated through further consultation with the Bakola groups.

3.3.1.13 Furthermore and according to Schmidt-Soltau, K 2003 they believe that these spirits live in forest camps similar to those used by Bakola and that they look like human beings, of both sexes as well as hunt animals and speak Bakola languages. These spirits often play a negative role to those who do not respect tradition and often pay a visit to forest camps in order to dance and sing with the Bakola people. Spirits are considered to have a positive role in terms of aiding individuals with the provision of useful information regarding forest issues.

3.3.1.14 Ethnic Background and Mother Tongue

3.3.1.15 The majority of the Bakola people interviewed in the area spoke Badjele, a native language of the Bakola ethnic group. According to Schmidt-Soltau, K 2003, the main neighbouring ethnic groups around the Bakola people are the Bassa, Ngumba, Mabea and Batanga. This is in line with the fact that most people in the surveyed Kribi Sub division were from the Bassa ethnic group¹¹.

3.3.1.16 History of Community Settlement

¹¹ Resettlement Action Plan: Kribi Power Project (2007)

3.3.1.17 According to the respondents, all of the heads of households and respective wives have been living in the same location since the year 2000. The campsites were all located next to their Bantou's neighbours and a few meters from the main Kribi to Edéa road.

3.3.1.18 This is in line with Schmidt-Soltau, K 2003 as he states that "when utilisation of a given zone no longer has a visible impact (not successful for hunting and gathering), the Bakola groups usually moved to another place. However due to the arrival of the "Bantou" which used the river border for agriculture practice and have established commercial relationships with the Bakola, these groups started living together with the "Bantou". Consequently, "with the reduction of the land used for hunting and gatherings as well as the necessity of labour in "Bantou" plantations and sensitisation campaigns, the Bakola people stay longer in their camps surrounding Bantou Villages".

3.3.1.19 Household Education

3.3.1.20 The Cameroon Government considers education to be very important for the survival of the Bakola people even though it might have a negative impact on their traditional system of knowledge¹². Nevertheless, from the households interviewed approximately half of the respondents had no formal education whilst the other half had only primary education. However, only a small number (12) of children were currently studying. This lack of education is further evidenced by the fact that only 3 respondents stated they could read and write in French, which is an indicator of formal education. All of the children that are currently going to school walk to their place of education and stated that the majority takes more than one hour to get to the school¹³.

3.3.1.21 Household Health

3.3.1.22 With regards to the current health status of the Kola population in the project area, the main diseases affecting the members of the households in the last three years were Malaria, followed by different types of diarrhoea. When compared to the head of the household, these figures change slightly as Malaria becomes more predominant and there is a decrease in numbers in the different types of diarrhoea that suggests that this latter disease affects children more. There is however an increase in diseases associated with coughing. No one identified HIV/AIDS as an occurring disease.

12 Formal education usually takes the form of western education as it is identifiable with progress or civilization as such indigenous knowledge is usually not taken into account in the formal education curricula. According to Enkiwe, L. (2003) Formal education, as promoted by the state, has contributed to the marginalization of indigenous knowledge.

13 Please note that there is one primary school in each village and that they do not measure time in terms of hours by through the day light.

3.3.1.23 Furthermore, when asked about child mortality in the household over the last three years, the SEB survey showed that 5 households of the 18 questioned had suffered from such a misfortune. Some of the main known diseases that were stated as being responsible were Malaria and Yellow Fever.

3.3.1.24 With regards to the existing disabilities the SEB survey showed that only two Bagyeli households suffered from a disability.

3.3.1.25 In addition, to the health status of the household, the SEB survey also enquired about the main place of treatment. According to the respondents, the main place of treatment was the local hospital. In addition, the Bakola people are renowned for their knowledge of traditional medicine. The latter was evidenced by the fact that the majority of respondents mentioned at least three medicinal plants they used with malaria, diarrhoea, sterility and protection against witchcraft.

3.3.1.26 Leisure Activities

3.3.1.27 When asked about the household's main leisure activities, the majority of the respondents answered that they spend their free time in the house/camp whilst the children play sports as a main activity. As such, the time spent getting to the place of leisure was mostly less than five minutes.

3.3.1.28 Economic Activities and Livelihood Options

3.3.1.29 This subsection looks at the different economic activities and livelihood options mentioned by the respondents.

3.3.1.30 The main economic activity of by the respondents during the household SEB survey was agriculture (27%) closely followed by hunting (17%) and traditional healing (10%). The remaining respondents mentioned they were students, or children. Additionally, of the respondents that had a second activity, 89% mentioned hunting with 11% mentioning agriculture. The fact that agriculture was a key occupation could be an indication of their more long-term settlement in the campsites.

3.3.1.31 With regard to other sources of income besides productive activities, all respondents indicated that they did not receive monetary assistance from other family members outside the household unit. In addition, when asked about the rearing and selling of animals, the majority of respondents stated they did not rear any animals (with the exception of 3 households, of

which 2 stated they owned chickens for own consumption and one mentioned the rearing of dogs for consumption).

3.3.1.32 The monthly income levels that the household obtained taking into account all of the activities mentioned above, was of an average of less than 25,000CFA (52USD).

3.3.1.33 Wealth

3.3.1.34 In order to obtain an image of the wealth of the households in the project area, the questionnaire asked the household if they had certain assets that ranged from luxury assets such as mobile phone, TV, Stereo to more basic assets such as a mattress and agriculture tools. The majority of respondents (14 households) stated they did not have any of the assets mentioned. A very small percentage stated they had a radio, however only one household mentioned a bed/mattress. This lack of physical assets was further evidenced by on site observations into the houses of the respondents.

3.3.1.35 Household Resources

3.3.1.36 In order to obtain a more precise image of the Kola household routine, the questionnaire asked each household what were their main sources of water, fuel to cook, fuel used for lighting and their waste disposal methods.

A) Water

3.3.1.37 The SEB survey found that when looking at the main source of water all of the households interviewed mentioned the river as their main source of water. When asked if the household did anything to the water before using it, all respondents stated they didn't do anything. The source of water in combination with the lack of safety measures with the drinking water might be one of the main factors causing diarrhoea.

3.3.1.38 According to the time per day spent in collecting the water is between 5 to 30 minutes by foot, the main source of water does not seem to be very far from the camps where the households reside and is free. In addition, the average water storage capacity in the household is approximately 40 – 50 litres of water.

B) Fuel used for cooking and lighting

3.3.1.39 With regards to the sources of fuel to cook, all respondents stated that the main source was fuel wood, with the majority stating it took more than one hour by foot to collect it. In contrast,

the main source of fuel for lighting was petroleum/kerosene followed by incense. As such, an equal number of respondents said they spent between 1001 to 5000CFA (equivalent to US\$2.1 to US\$10.5) per month and the other more than 5000CFA (US\$10.5) per month to obtain the fuel used for lighting.

3.3.1.40 With regards to time spent in collecting/buying the fuel, half of the respondents mentioned it took them between 5 to 30 minutes by foot whilst the remaining said it took more than 30 minutes by foot.

C) Waste

3.3.1.41 When looking at the household waste disposal methods in the project area, the majority of respondents stated they bury their waste in the bush/forest.

3.3.1.42 Information Provision and Conflict resolution

3.3.1.43 The study showed that the majority of respondents considered the radio to be the most reliable source of information followed by friends/family. In order to solve a community conflict, all respondents indicated their own traditional leader.

3.3.1.44 Relationship with Neighbouring Communities, Attitudes & Concerns

3.3.1.45 According to Schmidt-Soltau, K 2003 the Bakola live relatively symbiotically with the Bantou neighbours. They set their camps along roadsides to better facilitate trade and provide forest game in exchange for produce and manufactured goods. Nevertheless, exploitation of the Bakola by other ethnic groups is a grave reality, especially since the latter are still largely unaccustomed to the cash-based economy.

3.3.1.46 Additionally, according to informal interviews with the traditional chiefs of the villages, the communities they are inserted in do not give the Bakola traditional chiefs as much recognition as community Bantou leaders.

3.3.1.47 In order to better understand how the respondents perceive their relationship with the neighbouring Bantou communities the questionnaire asked them to choose one of the 6 categories that described the said relationship as being Excellent, Very good, Good, Not so good, Poor or No relationship. The majority of respondents mentioned the relationship as being not so good or poor however, a few stated that they considered the relationship to be very good. As the majority of the respondents did not speak French, the traditional leader of

the neighbouring communities usually helped with the translation, which might have influenced the replies given.

3.3.1.48 The majority of respondents stated they did not receive any benefits from the Government Integration Programmes.

3.3.1.49 Finally the main concerns regarding the communities interviewed were more to ensure benefits are received for the whole community rather than on an individual basis. These consisted mainly of a better camp or house, followed by electricity, schools, health centres, water and ID cards.

3.3.2 Estimation of Project Impacts on the Bakola Communities

3.3.2.1 As mentioned in the Resettlement Action Plan, Cameroon's forests have undergone extensive conversion, with half the historic forest cover (cover that existed prior to extensive human disturbance) cleared for farms and settlements. At least 20% of the remaining forests are degraded or considered secondary forests. Agricultural clearing and logging are the primary causes of deforestation and degradation and logging has significant environmental and economic consequences at both the local and national level.¹⁴

3.3.2.2 The accelerating pressure upon Cameroon's forests reserves not only has widespread ecological impacts but it also severely disrupts the nature of non-indigenous and indigenous local communities and their day-to-day existence. This is particularly true for the indigenous local communities such as the Bakola groups that are mainly gatherers and hunters.

3.3.2.3 Deforestation and degradation reduce the availability and quality of the forest products, which play a vital role in sustaining local lives. These products are used not only as medicines, food, tools and building materials within local villages and households but they are also used as an exchange coin in the existing barter system between the indigenous groups and the non-indigenous groups.

3.3.2.4 In addition, and again depending on the degree of the project impact (described below) on the existing forest resources, this might lead to a direct impact on the relationship between the indigenous groups and their neighbours, the Bantou.

3.3.2.5 The project will closely follow the main Edéa - Kribi road running almost parallel to it. It will destroy a total area (in both Edéa and Kribi Subdivision) of 300ha composed of secondary tropical forest (30-40% of the route), fallow lands (40-50%) and subsistence farms (20%). The

¹⁴ Hand On/ TVE/ITDG. 2004. "Money Grows on Trees – Cameroon"

Kribi Sub -division will account for 65% of the route (i.e. equivalent to 195ha area) of which we assume that 40% is secondary forestland (i.e. equivalent to 78ha over 65km).

3.3.2.6 In addition, given that the intensity of human intervention diminishes as the distance from the road and their settlements increases, then it is safe to assume that the existing secondary forest near the road has already suffered extensively from human intervention. As the Bakola communities are living next to the road, before the resource mapping was conducted it assumed that for their main timber and non-timber forest products, that they travel deeper into the forest.

3.3.2.7 As a result, given that (i) that the project will follow the road and thus affect the secondary forest next to the road (ii) there are only 30 households of the Kola group in the project area and (iii) that only 78ha over a 65km distance will be affected it is believed that this impact is not very significant and is localised.

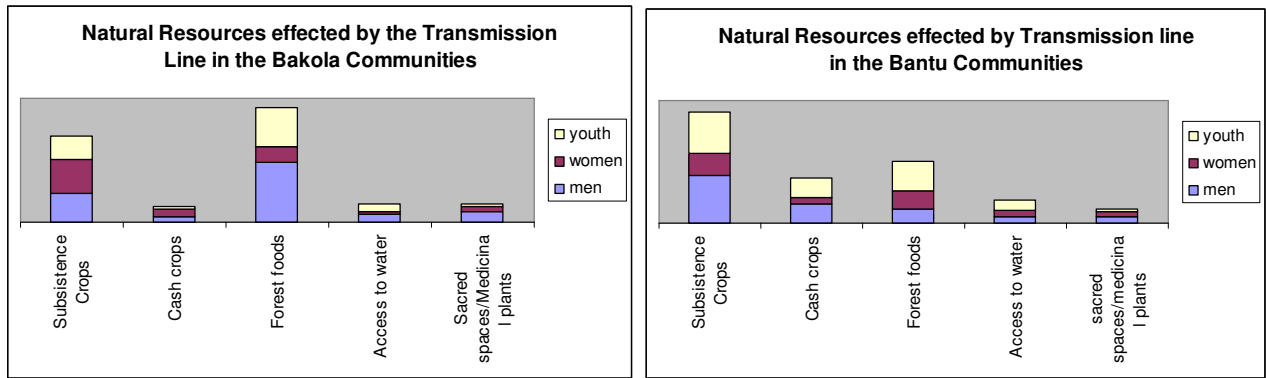
Table 2- Summary of Main Project Impacts on Kola Communities residing in Project Area

Nature of Impact	Potential Impact on Kola’s livelihoods	Impact degree
Loss of secondary forest (78ha) over a 65km stretch.	Loss of some medicinal plants/trees that exist close to the camps Migration of existing animals further away	This impact has a local influence and is considered insignificant.

3.4 Consultation Findings

3.4.1 Stakeholder Mapping of Natural Resources

Table 3 & Table 4 –Natural Resources affected by the Transmission Line in the Bakola and Bantu Communities



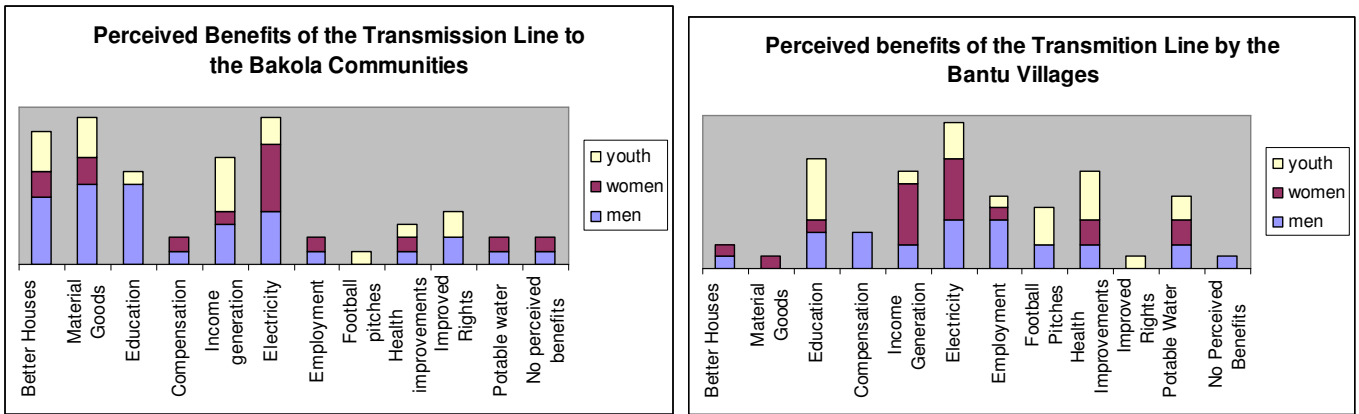
3.4.1.1 The biggest adverse effect of the transmission line is the disruption to local livelihoods through loss of access to the natural capital assets upon which they depend. These assets were identified with each community group which were divided into five groupings:

- Subsistence crops: manioc, cassava, coco yam, plantain, coconut, papaya and plantain
- Cash crops: palm oil palms, cocoa fruit trees (citrus, guava, mango) and pineapples
- Forest foods: animals hunted (forest antelope, porcupine, monkey, cane rat, pangolin, cervil) forest fruits, roots and leaves
- Access to water for domestic use, agricultural use and for fishing
- Sacred spaces and medicinal plants used for animistic rites and traditional medicine
- The Bakola believe that their traditional hunting and gathering activities will be the most affected by the transmission line corridor. The baseline study indicates that the forest clearance has been kept to a minimum. The concerns are more of an access issue, i.e. the greatest impact is not being able to access forest through the corridor. They believed that the construction of the line would scare away the animals they hunt and rely upon for both food and barter, with their Bantou neighbours. Two of the villages, Elogbatindi and Bonguen were also concerned that their 'sacred spaces' would be destroyed.

3.4.1.2 The Bantou communities perceive that their pastoral activities and in particular crops such as cassava, maize, manioc and plantain would suffer. The main cash crops to be affected will be palm oil, palm trees and some cocoa trees.

3.4.1.3 Benefits of the Transmission Line to the locality

Table 5 & Table 6 – Perceived Benefits of the Transmission Line by the Bakola and Bantu Communities



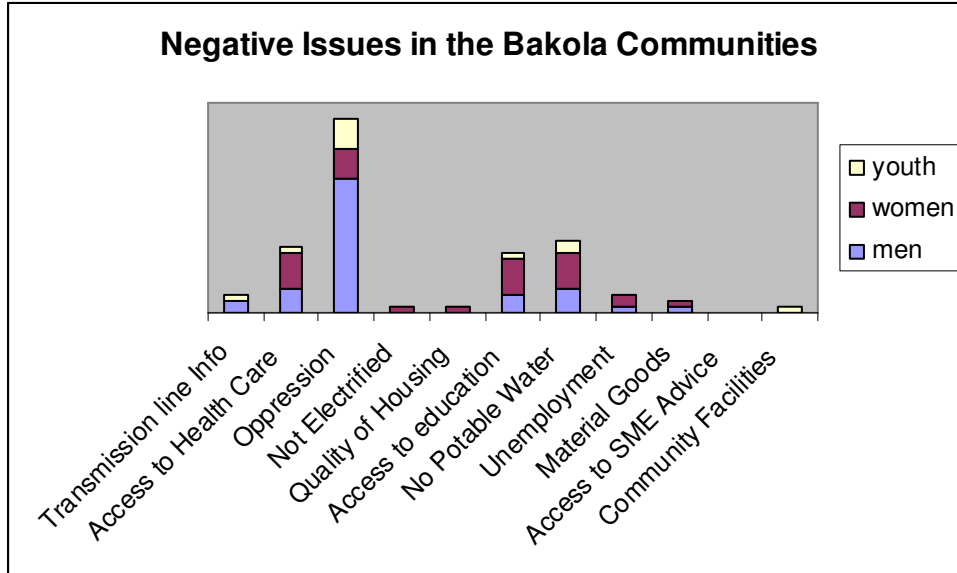
3.4.1.4 Electricity was perceived to be the main benefit by both communities but for very different reasons. The Bantou see increased access to electricity as a means to mechanising their livelihoods, whereas the Bakola simply want to have electric light. The Bakola women, who currently sleep outside, in particular want electric light, as they believe it will keep the snakes away. Material goods were second on the Bakola list. There was a consensus amongst each village that the Bantou would take any financial compensation they received, however, artefacts could be protected. Preferred items for the men were guns for hunting and chain saws for cutting down the trees with clothes, shoes and cooking utensils for the women. Young people wanted a combination.

3.4.1.5 The men, in general, anticipated being provided with better housing as well as village schools for their children. Again and again the Bakola told us that the Bantou chivvied them to come out of the forest, “.....we now told to go away, move away.” The men thought that if they had to move because of the line then they should have farms, which would generate income to support their families. They would rather this than rely on the bartering system, ‘troc’, on which they currently depend.

3.4.1.6 Both Bakola men and youths saw identity cards as a benefit of the transmission line. This was thought to be a possible means of improving their status with their Bantou neighbours. One group of young Bakola would be losing the space where they play football. They wanted this replaced with a proper pitch, boots and their own football strip. Likewise the male Bantou youth had a healthy preoccupation with football. Female Bakola youth thought they would benefit from being able to set up hairdressing and tailoring micro enterprises.

3.4.2 Livelihood issues and measures to address negative issues with the Bakola

Table 7 – Negative livelihood issues in the Bakola Communities



3.4.2.1 In exploring livelihood issues with the Bakola, we sought to identify the vulnerability context within which they live, how resistant they are to shocks and trends and what access and influence they have with the meso and macro levels of society in Cameroon.

3.4.2.2 First impressions indicate, as per the literature review, that the Bakola live relatively symbiotically with their Bantou neighbours. Indeed the communities in this study were along the roadside adjacent to each other. This appears to facilitate trade; the Bakola provide bush meat in exchange for produce and manufactured goods.

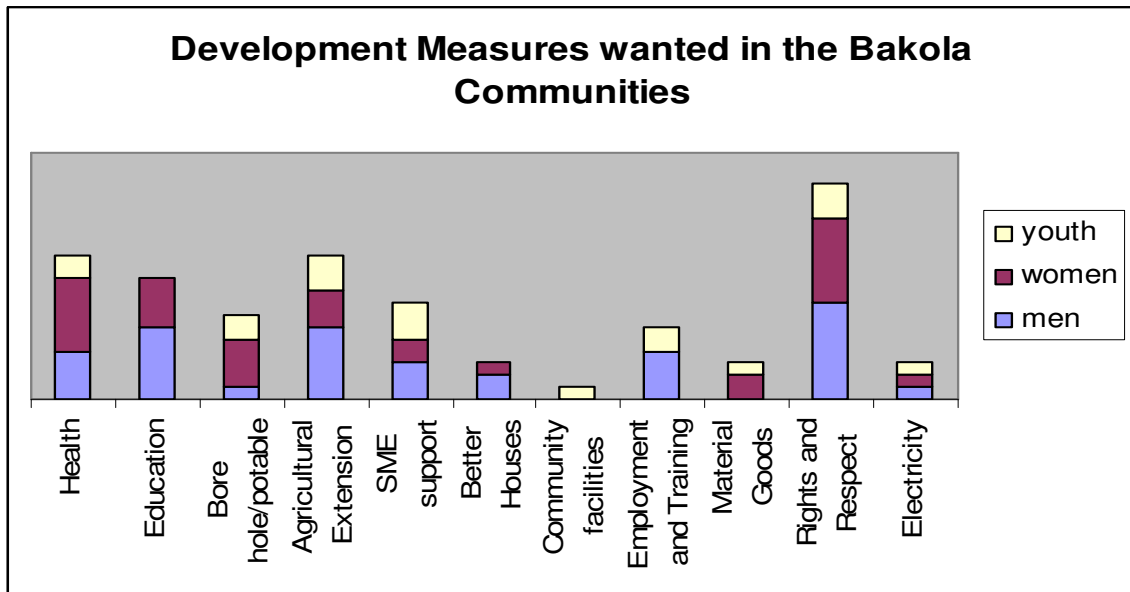
3.4.2.3 However relations with the ‘neighbours’ dominated discussions in every Bakola village with the men and were a major concern with the women and youth. The Bakola feel that they are oppressed by their Bantou neighbours. No trust exists between these two communities. Networks of obligation were very much one-way. The result of this key issue is that the Bakola feel vulnerable and insecure.

3.4.2.4 Consultations were held in the Bakola villages, with the exception of Bonguen, a Bantou man had built a house on the edge of this Bakola village. He claimed, to us, on our initial visit, that they (the Bakola) were his, so those consultations were held in the Bantou chief’s palace. All of the consultations used translators to enable an open and culturally sensitive approach to the issues discussed. The two translators were a daughter of one of the Bakola Chiefs and a migrant worker from Bamenda, North (Anglophone) Cameroon, who lived amongst the Bakola.

Nonetheless, each Bakola consultation provoked intrusions from the Bantou neighbours to listen and try to influence/ intimidate the Bakola and their responses.

- 3.4.2.5 Land and security of tenure in particular was a major issue. According to the Bakola men, they came out of the forest at the Bantou (Governments) demand and now the Bantou were trying to move them on again so they could build on or develop their land.
- 3.4.2.6 The women told us that the Bantou governed access to potable water. They were only permitted access to Borehole water (Elogbatindi) in return for cleaning the area; otherwise they depended on stream water. They accused the Bantou of deliberately polluting the stream water.
- 3.4.2.7 Young people said that they felt exploited by their neighbours, that they were paid virtually nothing for a full days work, also the Bantou demanded hefty commissions from any independent income generating activities, such as provision of traditional healing, to 'outsiders'
- 3.4.2.8 Lack of access to health care provision was another key issue, which was having a detrimental effect on all the Bakola communities. As described in the SEB, Sickness and death were predominantly caused by water born or insect born diseases and childbirth. Anecdotal evidence was provided of high levels of under five mortality, morbidity and low life expectancy. Almost every woman in each of the groups had lost a child within its first year, often at child birth. This happens in the village where there isn't any extra health care. The oldest person in the four communities was around 50 years old.
- 3.4.2.9 Women want their children to go to school yet also want them to retain their cultural distinction. They feel that without education they will remain isolated from Cameroonian society; with it they will not be perceived as primitive, by their neighbours. There was a divided opinion on whether Bakola children should go to the state schools or be educated within their villages to ensure they retained their culture. The men want their children educated in Bakola (their language) and French.
- 3.4.2.10 Adult literacy was also an issue. Most of the Bakola participants were illiterate and had a very limited grasp of French.

Table 8 – Development Measures as indicated by the Bakola Communities



3.4.2.11 Discussions about livelihood measures indicated that both Bakola men and women want increased rights with and respect from their neighbours. They collectively saw this as the priority measure for their development. They perceive that rights and respect will come from formalising their identity as Cameroonians, i.e. Identity cards and legal tenure of the land and forest they live on, farm and hunt in, together with their sacred spaces.

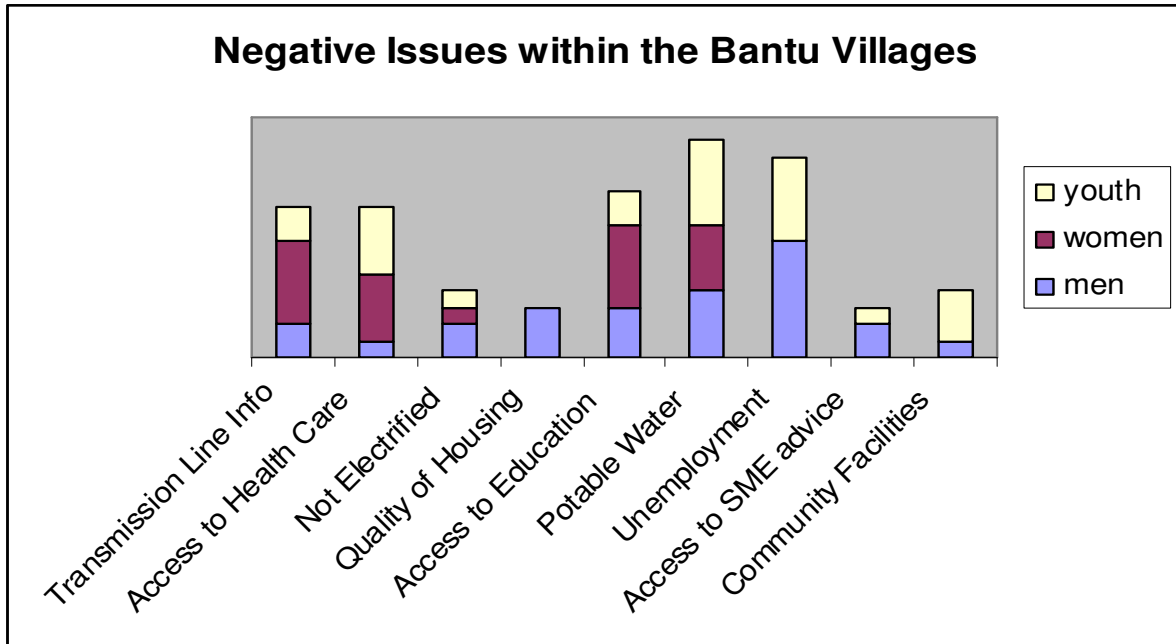
3.4.2.12 Men, women and youth want support in developing agricultural activities and women want to be able to process food crops such as palm nuts for oil. Men and youth identified a link between employment and training. They wanted access to employability skills to supplement their traditional livelihoods. All wanted support in micro enterprise development. Men saw provision of material goods such as chain saws and hunting guns as a means towards this end. Women believed that material goods as basic cooking utensils, beds to sleep on, clothes and shoes for their families would be beneficial.

3.4.2.13 Health provision, education and access to potable water were identified as key issues in sustaining the well being of their communities. These were often linked, especially by the women, who, through in depth discussions, wanted to combine health and education for them selves. This would enable them to understand non-traditional cures and thus be able to take responsibility for primary health care within their villages.

3.4.2.14 Interestingly electricity was seen as a measure, but not a priority measure to explore further.

3.4.3 Livelihood issues and measures to address negative issues with the Bantou

Table 9 – Negative Livelihood issues in the Bantu Communities

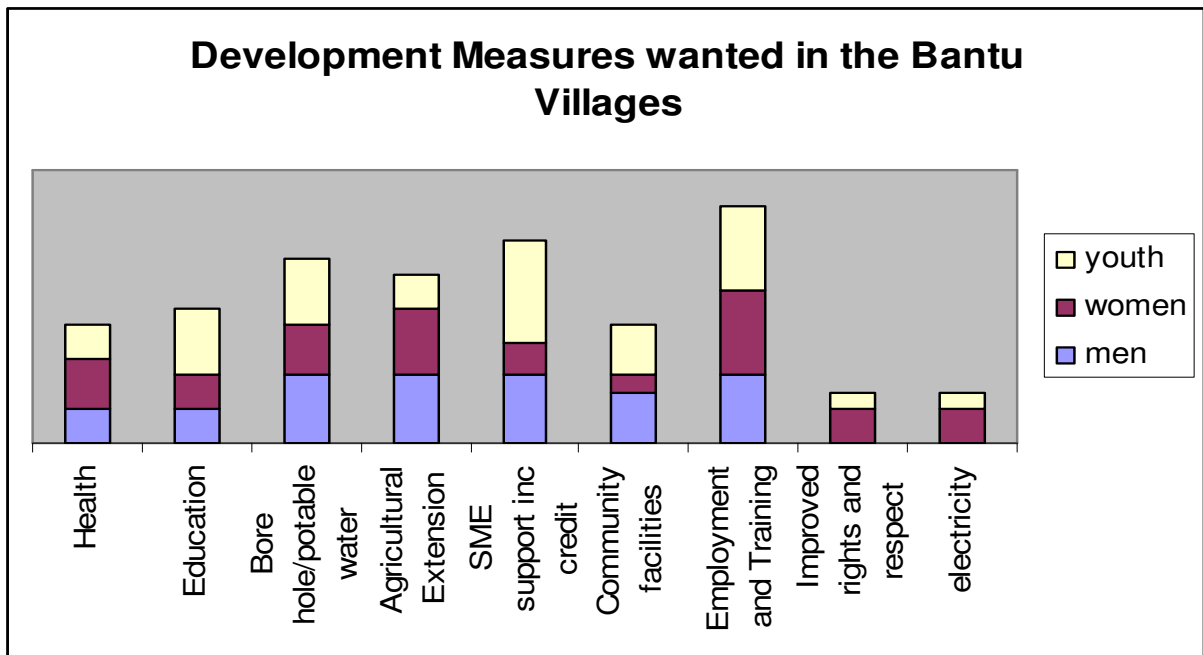


3.4.3.1 Collectively, water was the major issue in the Bantou communities. Most villages were dependent upon river and stream water interspersed with a few boreholes. The issue of water was followed by unemployment, access to health care, education and information regarding the transmission line.

3.4.3.2 Men and young people wanted employment as an alternative livelihood strategy to farming and extension support to improve their yields. Information regarding the transmission line including risks, benefits was wanted. Most people get their information from the radio as this was perceived to be the most appropriate form of communication.

3.4.3.3 Women want better access to health centres, which currently are between 2 and 7km from each of the villages, and to schools, which were similarly dispersed. The secondary schools, which were in the two towns Kribi and Edea, were an exception. Children travel to school on foot or in a shared taxi, depending on the distance, likewise to the health centres. Community facilities, in particular football pitches, were an issue with young people. This was a major issue in Bipaga1 where the village chief is seventeen years old.

Table 10 - Development Measures as indicated by the Bantu Communities



3.4.3.4 Development measures within the Bantu villages tended to focus on access issues, improving of existing livelihood skills and employment opportunities. Access focused on the distance to be travelled to school, health centres and hospitals and potable water, improving of livelihoods skills, employment opportunities, agricultural extension, small & medium enterprise support and micro-credit facilities. Access to health centres was a key issue and community owned and managed health centres were a topical discussion point. On exploring this further there was also interest in health insurance schemes to enable regular small payments into a fund that would cover or subsidise the full cost of medical treatment and drugs, so long as the fund holder or group could be trusted.

3.4.3.5 Women and young people want increased rights within their communities. Women saw electricity as a means to an end, with one group of women saying that once they had electricity they wouldn't need anything else.

4 Summary of Community Development Priorities

4.1.1 Bakola Community Development Priorities

1. Land Rights and Identity Cards
2. Agricultural Extension and Appropriate Technologies
3. Primary Health Care
4. Boreholes
5. Better Housing
6. Baku School
7. SME support

4.1.2 Bantou Village Development Priorities

1. Agricultural Extension and Appropriate Technologies
2. Boreholes
3. Vocational Education and Training,
4. Health Centre
5. SME support
6. Village Market
7. Football Pitches and Chiefs Palaces

4.1.2.1 Once the community development priorities had been identified by the respective groups they were worked with to develop an action plan that identified the key activities and the capital assets the groups could contribute. It also identified what was required, who should be responsible and for what and how they knew that they had been successful (observable, verifiable indicators).

4.1.2.2 In comparing the two communities' development priorities, there were key issues that involve increasing of both self-esteem, the rights of the Bakola and equitable access to services. These include land rights and identity cards, primary health care awareness, education provision for Bakola children that feed into mainstream provision and a framework for consultation and engagement with both Government structures and traditional tribal structures dominated by the Bantou Community. The four Bakola chiefs agreed to meet with each other and an AES Sonel representative to discuss and agree the process of securing identity cards and land rights for their community. The Community members were willing to provide labour and some natural materials towards developing community infrastructure and all of the women want to receive training in primary health care awareness

4.1.2.3 There were also areas for joint cooperation and support that could also seek to build positive two-way relationships between the Bakola and the Bantou. These included agricultural extension which should be provided for free to the Bakola and subsidised for the Bantou, access to vocational education and training to increase employability, ideally with apprenticeship schemes training, Small and Medium Enterprise (SME) and Small and Medium Forest Enterprise (SMFE) Support with micro credit schemes, improvements to existing health care facilities, creating community run health centres and establishing community health care scheme to subsidise the cost of health care for those participating in the scheme. A separate fund is needed to support and develop community owned projects such as borehole drilling, better housing in the Bakola communities and community facilities such as football pitches and refurbished Chiefs palaces (which are the village communal meeting places). Both Bakola and Bantou communities would contribute time labour, land and naturally occurring building materials to support their development priorities.

4.2 Community and Indigenous Peoples Plan

4.2.1.1 The responses have been collated into a Community and Indigenous Peoples Plan. There are three development objectives in the plan:

- To establish legal recognition of ownership and usage of Bakola Land,
- To develop a strategy for continued interaction, consultation and sustainable livelihoods for the Bakola.
- To promote sustainable social and economic development in the Bakola and Bantou communities

4.2.1.2 Each development objective is broken down into Action Measures and actions to address them. Roles and responsibilities, observable and verifiable indicators of success and means of verification are also detailed, together with an outline budget for each action over a five year period. The budgeting period is broken down into Year 1, Years 2-3 and Year 4-5.

4.2.1.3 The baseline data combined with the participatory consultation provide an understanding of existing livelihood conditions and can be used as a quantitative and qualitative benchmark from which CIPP progress can be measured.

- 4.2.1.4 Further to the meeting with the AfDB/IFC E&S team and the proposal that AES Sonel set up a community interest entity to oversee the community development plan, additional discussions have resulted in an amended proposal for the action plan to be implemented through the use of local NGOs,(a list of NGOs is included at the end of the section, ones with relevant expertise are highlighted), and that AES Sonel appoints a CIPP Liaison Officer to facilitate this process and represent their interests.
- 4.2.1.5 In order to maintain the momentum initiated by the consultation process, once agreed, the action plan should go out to tender as a whole or component parts to local NGOs as a priority action.
- 4.2.1.6 Tender agreements should be based on the NGOs capacity and capability to implement the action plan and should include:
- Organisation capacity statement
 - Detailed experience of working with indigenous people in Cameroon
 - Detailed experience of working in the individual priority areas ie land rights, agricultural extension, microcredit etc
 - Mechanism to monitor, evaluate and report on the implementation process, this should not exceed 5% of the total budget
 - Detailed budget within the confines of the outline budget
 - Project Administration should not exceed 10% of the total budget.
- 4.2.1.7 Monitoring data will be fed to AES Sonel who will consider, with appropriate consultation, the need for different actions to achieve the objectives.

4.3 Community and Indigenous Peoples Plan 5 yr Framework

To establish legal recognition of ownership and usage of Bakola Land						
Actions	Roles and Responsibilities	Observable Verifiable Indicators	Means of Verification	Outline Budget Year('s)		
1. Land Tenure and access to entitlements for the Bakola				1	2-3	4-5
Organise community-based discussions with and between the four Bakola communities regarding their rights over their traditional land and how to obtain identity cards.	AES Sonel Liaison Officer and local NGO to arrange meeting with the four Bakola chiefs together to agree and start this process.	Dialogue over land rights and the ability to bring issues to the attention of local officials without being harassed for not having identity cards.	1. Notes of meetings 2. Identity Cards for members of the Bakola communities	15000	1000	
Work with the four Bakola communities to provide training in GPS data collection and map representation, to document the lands they use for hunting and gathering, and for agriculture through community land use maps.	AES Sonel Identify local NGO to facilitate this process through the four Bakola Chiefs. NGO implements action measures with Bakola Communities. (It is recognized that the rights over extended hunting areas are unlikely to be formally granted but the exercise will be informative and provide skills training.)	Training received in GPS Lands documented Land use maps prepared	1. Records of numbers of Bakola trained 2. Community maps produced by local NGO / AES Sonel	40000	45000	
Arrange presentation of their maps of community land use to local leaders and the government, to obtain their validation of these maps.	Bakola Chiefs with support from AES Sonel / local NGO with land rights expertise.	Bakola Chiefs finalise local agreements over land, thus securing their land tenure.	1. Notes of meeting with Land Rights lawyer 2. legal process documented 3. Land rights received by Bakola Chiefs	5000	22000	

			4. Report on the demarcation and titling of Bakola lands			
Totals				60000	68000	

To develop a strategy for continued interaction, consultation and sustainable livelihoods for the Bakola						
2. Framework for Consultation and Engagement with the Bakola				1	2-3	4-5
Establish a programme of community based meetings to draw up their own community development initiatives and seek support from the community development fund	Local NGO to work with the Bakola to provide capacity building support to the associations/ interest groups in project preparation and development.	The development of a common development agenda with each other.	.Notes of meetings 2.Record of participants 3.Number of development initiatives 4.Applications prepared by the community	20000	20000	10000
Set up community-based associations / interest groups to discuss shared issues with each other and mechanisms for addressing them	Local NGO to support and train Bakola in development and negotiation skills to participate more actively in civil society processes affecting them	Increased communities' control over the orientation and decision-making of their initiatives	.No of interest groups set up 2.No's receive training in negotiation skills 3.Officially acknowledged by the Paramount Chief	20000	10000	10000
Establish a platform for dialogue between all local stakeholders with local authorities and Bantu neighbours	Bakola chiefs together with representatives from the community based associations attend, platform facilitated by Local NGO	Increased knowledge and skills to engage with civil society and policy makers and defend their rights	1.First meeting arranged 2.notes of meeting 3.no participants 4..Action points agreed upon 5.no of subsequent meetings	10000	15000	10000
3. Livelihood Development Strategy for the Bakola						
Establish community based education centres (CBEC) oriented towards the Bakola population with designated space for education and training	Bakola community to provide labour with construction support and guidance from	Empowered communities with access to new skill sets and resources	1.Local participation in the design and fabric of the structure 2. Local involvement in	20000	5000	5000

Community and Indigenous Peoples Plan

and group activities such appropriate food technologies	AES Sonel Construction firm		the construction 3.Completion of the CBEC			
Provide community based primary health care training and health awareness in the CBEC	Bakola Women to receive community based training with support from local/ national NGO	Better informed about domestic health issues like insect born and water born diseases and hygiene	1.No women participating in training 2.No completers 3.%age reduction in insect & water borne disease post training	20000	10000	5000
Development and provision of educational materials for Bakola children so they can receive basic education in their communities	NGO that specialises in education of Bakola children to provide education within the CBEC	Increased levels of literacy Increased levels of enrolment in state schools	.No children attending regularly .No children enrolled in state schools	5000	5000	2500
To support and develop an agricultural extension program for Bakola communities that encourages self reliance and sustainable food production	Training programme to be developed and delivered by NGO specialising in sustainable agriculture	Increased production Improved nutrition Use of appropriate agro-processing technologies	1. Variety of subsistence crops grown 2. Variety of cash crops grown 3. Evidence of agri food processing at village level	10000	15000	10000
TOTALS				175000	138000	52500

To promote sustainable social and economic development in the Bakola and Bantu communities						
Actions	Roles Responsibilities	Observable Verifiable Indicators	Means of Verification	Budget Years		
1. Community Mobilisation and Training				1	2-3	4-5
Audit of local skills within the Bakola and Bantou Communities	Local NGO/Consultancy to carry out local skills audit of the four Bakola and Bantu communities	No of skilled and semi skilled potential employees	Record of locally available skills within the communities	1000		
Work based Vocational Education and Training (VET) Opportunities for rural youths from Bakola and Bantou Communities	Transmission line construction companies / AES Sonel workforce to provide work based learning opportunities to local youths from the Bakola and Bantu Communities	Increased employability skills for young people Positive relationships between communities and AES Sonel 10% of construction work force sourced locally	1. % employees sourced from the Bakola and Bantou communities 2. No's of young people offered work placements 3. %age Bakola vs Bantu offered opportunities. 4. No's employed post construction	In kind, include in construction firm contract	In kind	In kind
2. Microenterprise and micro credit scheme				1	2-3	4-5
Capacity building support for SMEs and SMFEs within Bakola communities	Regional Development Agency together with local NGO able to provide community based training provision and SME /SMFE support to Bakola	Increased incomes and improved livelihoods More female entrepreneurs	1. No's and gender spread of trainees 2. No's entrepreneurs receiving support from both communities 3. No's women start up	5000	10000	7500

			and run SMEs /SMFEs			
Provision of small loans to groups within communities, guaranteed by interdependence of group members as a Rotating Credit Scheme	Local NGO with Rural banking institution and loan repayment systems to facilitate the disbursement of low-interest soft loans	Better financial planning and management through training Effective as revolving credit scheme Requires no further financial input after year 4	<ol style="list-style-type: none"> 1. Credit scheme established 2. No participants in credit scheme 3. %age of debts recovered 4. no of new loans 	5000	30000	15000
5. Social Infrastructure Micro-projects				1	2-3	4-5
Identified, developed and implemented by local communities. i.e. borehole drilling, improved health centres, community facilities etc	Local NGO to work with Community Associations using participatory methodology to assure ownership and encourage sustainability	25% 'contribution' from community members Ownership by community members	<ol style="list-style-type: none"> 1. no of projects submitted in years 1,2, 3, 2. no of improved facilities in the communities 	30000	50000	30000
6. Sustaining Development Support (years 5-10) Optional						
<ul style="list-style-type: none"> - Build on foundation laid by CIPP initial activities – continue community driven and managed infrastructure rehabilitation projects - Capacity building for both communities and local NGOs, CBOs through secondary and tertiary micro-projects - Economic development – especially in agriculture and local enterprises - Enhance Community – Cross community interaction and cooperation - Develop community driven environmental initiatives as part of the CIPP 				10000	20000	5000
TOTAL S				50000	100000	67500
TOTAL COST				\$583,000		

4.4 CIPP Implementation Gant Chart for the first 3 years broken down into quarters (Q1-12)

Action	Q1	Q2	Q3	Q4	Q5	Q6	Q7	Q8	Q9	Q10	Q11	Q12
Establish legal recognition of ownership and usage of Bakola Land												
Community-based discussions with Bakola Chiefs	X	X	X	X	X	X						
Processing ID Cards		X	X									
Train Bakola in GPS data collection and map representation		X	X	X	X							
Produce community land use maps			X	X	X	X						
Validate maps with Government					X	X	X	X				
Strategy for continued interaction, consultation and sustainable livelihoods for the Bakola												
Programme of community based meetings	X	X	X	X	X	X	X	X	X	X	X	X
Set up community-based associations		X	X	X	X	X	X	X	X	X	X	X
Establish a platform for dialogue between all local stakeholders					X		X		X		X	
Establish community based education centres		X	X									
Provide community based primary health care training				X	X	X	X	X	X	X	X	X
Basic education provision in Bakola communities				X	X	X	X	X	X	X	X	X
Agricultural extension program				X	X	X	X	X	X	X	X	X
Sustainable social and economic development in the Bakola and Bantu communities												
Local skills audit of both communities	X											
Work based VET Opportunities		X	X	X	X	X	X	X	X			
Capacity building support for SMEs and SMFEs			X	X	X	X	X	X	X	X	X	X
Establish Rotating credit Scheme				X	X	X	X	X	X	X	X	X
Social Infrastructure Micro-projects				X	X	X	X	X	X	X	X	X

5.0 Bibliography

Baka Pygmies:

<http://www.pygmies.info/>

Centre for International Forest Research (CIFOR) “Forest Dwellers on the Brink

<http://www.cifor.cgiar.org/Publications/Corporate/NewsOnline/NewsOnline34/dwellers.htm>

Hand on/TVE/ITDG.2004. “Money Grows on Trees”.

<http://www.tve.org/ho/doc.cfm?aid=1524&lang=English>

FAO. 2004. “Land Reform- Land Settlement and Cooperative: A survey of indigenous land tenure in Sub-Sahara Africa”. Volume 1.

<ftp://ftp.fao.org/docrep/fao/007/y5407t/y5407t00.pdf>

Ministry of Environment and Forestry of Cameroon. “Indigenous People (“Pygmies”) Development Programme for the Forestry and Environment Sectoral Program.” (IPP86)

PNDP 2003. République du Cameroun/MINEF (2003) *Etude sectorielle des impacts sociaux et environnementaux du programme sectoriel forêts et environnement. Rapport principal*. Yaoundé : République du Cameroun. République du Cameroun (2003) *Poverty Reduction Strategy Paper*. Yaounde: Republique du Cameroun

Rupp, S. 2003. “Interethnic relations in Southeastern Cameroon: challenging the “hunter-gatherer” – “farmer” dichotomy” African Study Monographs, Suppl.28: 37-56.

Scott Wilson, 2007, “Environmental and Social Impact Assessment Report for the Kribi Power Project, Cameroon”

Scott Wilson, 2007, “Resettlement Action Plan for the Kribi Power Project, Cameroon”

Stone, J. 2006, “The Baka Pygmies of Cameroon”

http://www.articlecity.com/articles/travel_and_leisure/article_2651.shtml

Soltau. K.S. 2003. “Plan de développement des peuples pygmées pour le programme national de développement participatif (PNDP)”

www.wds.worldbank.org/.../WDSP/IB/2003/07/12/000094946_03070712233780/Rendered/INDEX/multi0page.txt

Tamache J.2000. “Population et développement dans la province du Littoral”.Rapport d’analyse.

World Bank “Life Expectancy”

<http://www.worldbank.org/depweb/english/modules/social/life/index.html>

World Bank. 2004. “Community Development Program Support Project – AC127.

http://www.wds.worldbank.org/servlet/WDSContentServer/WDSP/IB/2004/02/19/000104615_20040219092013/Rendered/PDF/ISDS0P073629.pdf

Appendix 2 Socio Economic Baseline Questionnaire