



Document Number: 9970-S-CPL-00001 Rev 0

GAC CORPORATE DOCUMENT

STAKEHOLDER ENGAGEMENT PLAN

DS
B

DocuSigned by:
Anthony Kneuker
6C89A18631D4470...

DocuSigned by:
Basile Grosdidier
BBB91EAF90C34E9...

Revision:	Date revised:	Reason for revision:	Revised by:	Checked by:	Approved by:
0	30 Sept 2017	Issued for Disclosure	Basile Grosdidier	Tony Kneuker	Basile Grosdidier

CONFIDENTIAL – This document has been prepared for the sole use of Guinea Alumina Corporation, SA (“GAC”) and contains confidential information which is the property of GAC. Any distribution, reproduction or other use of this document without GAC’s express written consent is strictly forbidden. Any recipient who distributes, reproduces or otherwise uses this document without GAC’s written consent will be prosecuted and GAC reserves its rights in this regard.

TABLE OF CONTENTS

1.	DEFINITIONS OF TERMS, ABBREVIATIONS AND ACRONYMS.....	1
2.	INTRODUCTION.....	1
	2.1 PROJECT OVERVIEW.....	2
	2.2 PROJECT DESCRIPTION.....	2
	2.2.1 Overview.....	2
	2.2.2 Mine.....	3
	2.2.3 Port.....	5
	2.2.4 Rail.....	5
3.	PURPOSE AND SCOPE.....	6
	3.1 OBJECTIVES OF THE STAKEHOLDER ENGAGEMENT PLAN (SEP).....	6
4.	REGULATORY AND GOVERNANCE FRAMEWORK.....	7
5.	KEY PRINCIPLES OF STAKEHOLDER ENGAGEMENT.....	7
	5.1 WHAT IS STAKEHOLDER ENGAGEMENT?.....	7
	5.2 PRINCIPLES OF EFFECTIVE STAKEHOLDER ENGAGEMENT.....	8
	5.3 STAKEHOLDER ENGAGEMENT CONSIDERATIONS.....	9
6.	STAKEHOLDER IDENTIFICATION AND ANALYSIS.....	10
	6.1 INTRODUCTION.....	10
	6.2 STAKEHOLDER IDENTIFICATION APPROACH.....	10
	6.3 DEFINITION OF STAKEHOLDERS.....	10
	6.4 STAKEHOLDER ANALYSIS.....	10
7.	SUMMARY OF PREVIOUS STAKEHOLDER ENGAGEMENT ACTIVITIES.....	11
	7.1 STAKEHOLDER ENGAGEMENT FROM 2001 TO 2008.....	11
	7.2 STAKEHOLDER ENGAGEMENT POST-2008.....	12
	7.3 DETAILS OF THE STAKEHOLDER'S ENGAGEMENT UNDERTAKEN AS PART OF THE SEIA ADDENDUM AND UPDATE OF THE SEP.....	13
	7.3.1 Overall SEIA consultations.....	13
	7.3.2 Consultation of Women, Vulnerable Populations and Minority Groups.....	14
	7.4 ENGAGEMENT WITH SPECIFIC GROUPS.....	15
	7.4.1 Herders.....	15
	7.4.2 Engagement with Herders during SEIA Consultations.....	17
	7.4.3 Boké Prefectural Association of Cattle Breeders.....	17
	7.4.4 Fishermen.....	19
8.	PROJECT STAKEHOLDERS.....	20
	8.1 INTRODUCTION.....	20
	8.1.1 Concession Area.....	21
	8.1.2 Port Area.....	22
	8.2 KEY STAKEHOLDERS – CENTRAL GOVERNMENT AND ADMINISTRATION LEVEL.....	22
	8.2.1 Ministre de l'Environnement, des Eaux et des Forêts.....	22
	8.2.2 BGEED.....	22
	8.2.3 Minister of Territorial Administration and Decentralisation.....	23
	8.2.4 Labour Inspectorate.....	23
	8.3 KEY STAKEHOLDERS – REGIONAL GOVERNMENT AND ADMINISTRATION LEVEL.....	23
	8.3.1 Regional Governorate of Boké.....	23
	8.3.2 Prefecture of Boké.....	23
	8.3.3 Security Forces (Police & Gendarmes).....	24

8.4	KEY STAKEHOLDERS – LOCAL ADMINISTRATION (SUB-PREFECTURES).....	24
8.4.1	Sub-prefecture of Sangarédi	24
8.4.2	Sub-prefecture of Tanéné.....	25
8.4.3	Sub-prefecture of Boké.....	25
8.4.4	Sub-prefecture of Kolaboui.....	25
8.4.5	Sub-prefecture of Kamsar.....	25
8.5	COMMUNES LEVEL (TOWN COUNCILS)	25
8.5.1	Commune of Sangarédi.....	25
8.5.2	Commune of Tanéné.....	26
8.5.3	Commune of Boké.....	26
8.5.4	Commune of Kolaboui.....	26
8.5.5	Commune of Kamsar.....	27
8.6	DISTRICTS AND SECTOR WITHIN THE CONCESSION AREA	27
8.7	CIVIL SOCIETY ORGANISATIONS.....	27
8.8	NGOS.....	28
8.8.1	Youth.....	29
8.8.2	Women.....	29
8.8.3	Livestock breeders.....	29
8.8.4	Fishermen	29
8.9	OTHER STAKEHOLDERS	29
8.9.1	Religious Authorities.....	29
8.9.2	Local Entrepreneurs	30
8.9.3	Contractors	30
8.9.4	Media	30
9.	STAKEHOLDER MAPPING.....	30
9.1	METHODOLOGY	30
9.2	OVERVIEW RESULTS.....	30
9.3	ENGAGEMENT METHODS.....	31
10.	STAKEHOLDER ENGAGEMENT PROGRAMME.....	33
10.1	BOREALIS INFORMATION SYSTEM	33
10.2	STAKEHOLDER ENGAGEMENT MATRIX.....	33
10.3	STAKEHOLDER ENGAGEMENT PROGRAMME DETAILS	34
11.	TIMETABLE	34
11.1	SEIA ADDENDUM CONSULTATIONS.....	34
11.2	DAM SEIA CONSULTATIONS.....	35
12.	RESOURCES, RESPONSIBILITIES AND COORDINATION.....	35
12.1	ORGANISATIONAL STRUCTURE	35
12.2	COORDINATION.....	35
13.	GRIEVANCE MECHANISM	37
14.	MONITORING AND REPORTING.....	38
14.1	MONITORING	38
14.2	REPORTING.....	38
14.3	MONTHLY REPORTS.....	38
14.4	QUARTERLY REPORTS	38
14.5	ANNUAL REPORTS	38
14.6	COMMUNITY SURVEY	38

15. MANAGEMENT FUNCTIONS.....	39
15.1 MANAGEMENT RESPONSIBILITY	39
15.2 STAFFING AND REPORTING LINES.....	39
15.3 EXTERNAL COMMUNICATION OF STAKEHOLDER ENGAGEMENT	39
15.4 ROLE OF THE COMMUNITY DEPARTMENT	39
15.5 ROLE OF THE GOVERNMENT RELATIONS FUNCTION/COMMUNICATIONS.....	39
15.6 INTERNAL COMMUNICATION OF STAKEHOLDER ENGAGEMENT.....	39
15.7 CONTRACTORS.....	40
APPENDIX 1. STAKEHOLDER ENGAGEMENT PROGRAMME	41
APPENDIX 2. LIST OF ASSOCIATIONS/NGOS AND COMPANIES IN THE PROJECT AREA.....	50
APPENDIX 3. HERDERS ENGAGEMENT PLAN.....	55
APPENDIX 4. MINUTES OF MEETINGS: PUBLIC HEARING SEIA –ADDENDUM	58
APPENDIX 5. MBS PROJECT- ENGAGEMENT PLAN.....	73

LIST OF FIGURES

Figure 2.1 Overview of GAC's bauxite export project in the Préfecture of Boké	2
Figure 7.1 Overview of regional seasonal movements of transhumance	16
Figure 7.2 Overview of seasonal movements of transhumance	18
Figure 7.3 Fishing routes and Fishing grounds.....	20
Figure 9.1 General Stakeholders mapping for the GAC Project	31
Figure 12.1 Stakeholder Engagement Reporting Structure	36
Figure 12.2 Coordination between GAC's Departments	37

LIST OF TABLES

Table 8.1 Social hierarchy and interdependence among villages east of the Tinguilinta River, GAC concession area	22
Table 9.1 Engagement Methods	32

1. DEFINITIONS OF TERMS, ABBREVIATIONS AND ACRONYMS

AfDB	African Development Bank
AfDB ISS	African Development Bank Integrated Safeguards System
AfDB OS	African Development Bank Operating Safeguards
AMC	Alliance Mining Commodities Limited
ANAIM	Agence Nationale d'Aménagement des Infrastructures Minières
BAC	Boké Alumina Corporation
BGEEE	Bureau Guinéen d'Études et d'Évaluation Environnementale
CBG	Compagnie des bauxites de Guinée
CEO	Chief Executive Officer
COBAD	Compagnie de Bauxite et d'Alumine de Dian-dian
CPD	Comité Préfectoral de Développement
CSR	Corporate Social Responsibility
DSMP	Discipline Specific Management Plans
EDG	Electricité de Guinée
EGA	Emirates Global Aluminium
EIA	Environmental Impact Assessment
EMP	Environmental Management Plans
GAC	Guinea Alumina Corporation SA
GNF	Guinea Franc
Henan Chine	Part of China Henan International Cooperation Group (CHICO). Currently hold bauxite concession south of GAC's concession.
HIV/AIDS	Human Immunodeficiency Virus/Acquired Immune Deficiency Syndrome
ICD	Investment Corporation of Dubai
IFC	International Finance Corporation
IFC PS	International Finance Corporation Performance Standards
IFI	International Finance Institutions
MBS	Marketing Bauxite Sample
NGO	Non-governmental Organisation
Project	The GAC bauxite export project
RAP	Resettlement Action Plan
RUSAL	Russian Aluminium Company (UC RUSAL)
SEIA	Social and Environmental Impact Assessment
SEMP	Social and Environmental Management Plan
SEP	Stakeholder Engagement Plan

2. INTRODUCTION

This Stakeholder Engagement Plan has been prepared following the SEIA-addendum for the overall Project. As the Project evolves overtime, some components have not been studied as yet from an SEIA perspective and therefore this SEP does not cover all stakeholders that the Project will interface with. Components not covered in the SEP are the SEIA for the rail, dam, and new activities not initially planned (MBS as an example). If specific groups of stakeholders happen to be added after this SEIA, specific Appendix will be added accordingly. This document, which covers the period ending December 2016, includes MBS and Herdsmen SEPs.

This document is a living document and as such it requires to be updated at least annually. The next revision, planned for December 2017 will also include a Gender Strategy.

2.1 PROJECT OVERVIEW

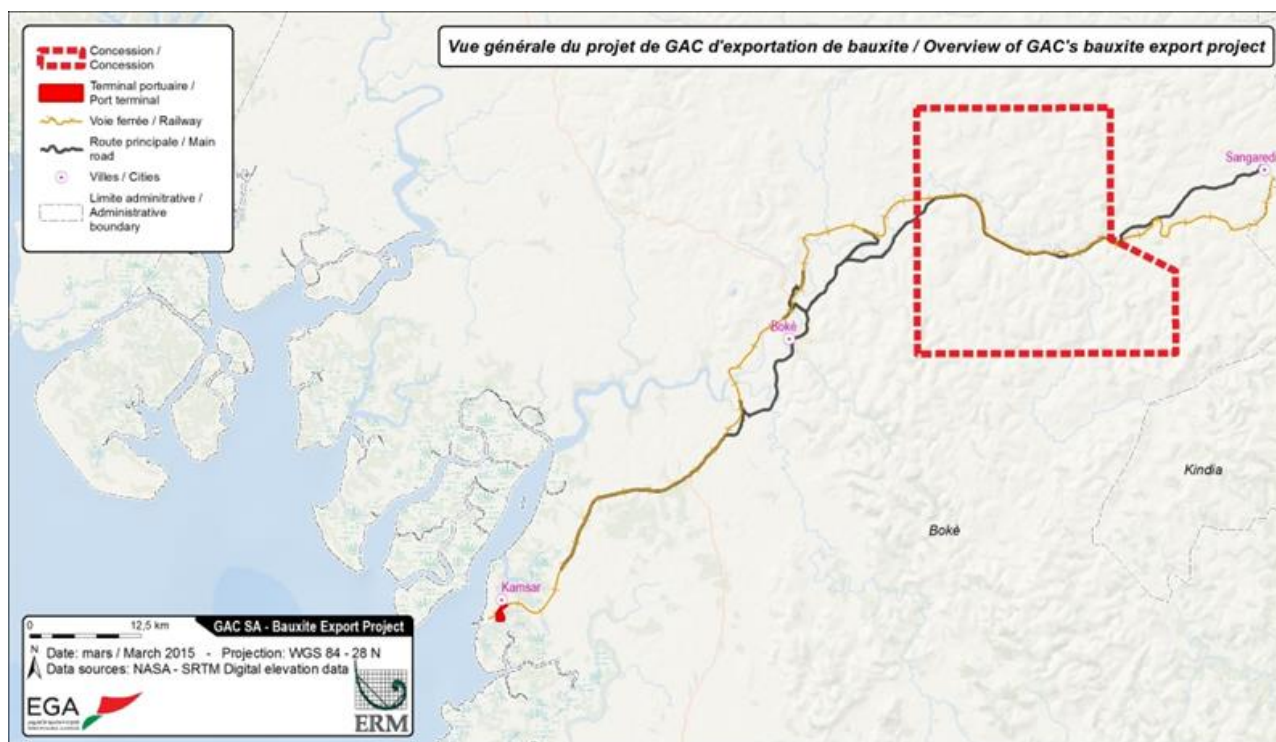
Guinea Alumina Corporation S.A. (GAC) aims to commercialise the bauxite resources on the GAC concession in the Boké region of Guinea. The Project involves the extraction of export grade bauxite from the 10 bauxite bearing plateaus on the southern part of the GAC concession. The bauxite extracted will be transported by rail to new port facilities in the port of Kamsar and shipped to international markets.

A summary description of the Project is provided in Section 2.2 and a map of the main project components is provided in Figure 2.1.

The Project will be operated by Guinea Alumina Corporation S.A. a wholly owned subsidiary of Emirates Global Aluminium (EGA), a joint venture of Mubadala, an investment and development company established by the Government of Abu Dhabi, and the Investment Corporation of Dubai (ICD) established by the Government of Dubai. EGA acquired full ownership of GAC in June 2013.

The Project schedule is targeting the first bauxite export in early 2018.

Figure 2.1 Overview of GAC's bauxite export project in the Préfecture of Boké



2.2 PROJECT DESCRIPTION

2.2.1 Overview

GAC's bauxite export project will include:

- Greenfield bauxite mining activities in the southern part of the GAC concession, with capacity to produce up to 17 million tons per annum of high grade bauxite.

- The development of two rail sidings connected to the existing Sangarédi to Kamsar rail line, at the mine and port locations to load and unload the ore.
- A bauxite ore crushing plant, stockyards and rail loading facility, to be located adjacent to the bauxite mine, within the concession area.
- The development of bauxite storage and export facilities at the GAC port concession in Kamsar.
- A water supply dam and associated pipeline located approximately 6 km north-east of the mine infrastructure.

GAC intends to mine, process and export 8 Mtpa (dry) of bauxite from Q2 2018, ramping up to potentially 17 Mtpa (dry) from 2020, for a proposed Project life of at least 20 years.

Ore transportation will require upgrading the existing Sangarédi to Kamsar rail line, currently operated under concession by CFB (Chemin de Fer de Boké). All necessary rail upgrades (except GAC's rail sidings at the mine area and the port) will be managed by CFB and are therefore not covered under this Stakeholder Engagement Plan (SEP). However, as the rail tracks will be used for GAC's ore transportation to Kamsar, GAC will closely follow up on the SEP defined and implemented by CFB for the construction and operation of the rail extension.

In addition, in order to promote financing of the bauxite export project and to demonstrate the value of marketing this bauxite, GAC is currently implementing a pre-phase in which samples of bauxite are extracted (project MBS). In the context of the MBS Project, exploitation and export of 250,000 to 300,000 tons per year over a period of 2 to 3 years as of July 2016 is planned. The bauxite resources to be exploited for MBS project will only be those located north of Plateau 20, which is a plateau of bauxite located west of the GAC concession in the sub-prefecture of Tanéné. The transport of the bauxite to the Kamsar Container Terminal (KCT) at the port will be done by road and not by train, until the upgrade to the railroad infrastructure planned in the context of the multiuser agreement between ANAIM, CBG, GAC, and RUSAL is implemented. Port operations and offshore loading will also be simplified to 6 yearly shipments of bauxite via Supramax ore carriers (50,000 tons). The GAC market bauxite samples project is being developed by EGA/ GAC in line with all GAC's commitments related to environment and communities. This implies EGA and GAC's continuous attention to proactive and sound management of health, safety and environmental risks and impacts. In particular, all commitments described in this SEP and relevant for the MBS project, will be implemented by GAC.

2.2.2 Mine

Mine Infrastructure

The mine infrastructure area will include the crushing plant, transfer conveyor, ore stockpile, loading platform as well as a water clarification and settling dam and cover a footprint of approximately 3 to 4 hectares. It will be located approximately 500 metres south of the existing road linking Boké to Sangarédi.

In addition to the main facilities, the mine will also include:

- a diesel-fuelled power generator (up to approximately 10 megawatt) to supply electricity to the ore processing plant and other facilities;
- a bulk fuel storage facility (500 to 2,000 cubic metre storage tank);
- an explosives storage area, already developed and permitted, and located in the northern half of GAC's concession;
- fire system and associated water tanks;
- a drinking water treatment unit and storage facilities;
- wastewater and storm water collection and treatment facilities; and
- offices.

Mine Pits/Plateaus/Haul Roads

The ore will be mined on the different plateaus, in open pits created by drilling and blasting the rock, then loading it onto haul trucks and moving it to crushers and sizers.

The mining plan is not yet totally defined. However, mining activities will start on plateaus 20, 24, 26 and 27. They will then extend to other plateaus. At any given stage during mine life, GAC expects that at least three plateaus will be actively mined. Several pits may be mined simultaneously to ensure consistent product quality on a given plateau.

In order to achieve target grade requirements, the bauxite mined from various pits will be blended at the pit location and at the mine processing infrastructure.

The mine has been designed to provide both export and future refinery-grade bauxites. The export grade bauxite will be transported to the crusher and stockpiled close to the mine plant. Where needed, refinery-grade material will be mined concurrently with export grade and stockpiled on the plateaus at a distance of 2 to 5 kilometres maximum from the pit for future use. This will allow for mine restoration to be carried out on the mined-out areas. Areas of solely refinery grade will not be mined but left in-situ. No further mining operation are planned in the future in these areas. Overburden will be stored on the plateaus to be used during the concurrent rehabilitation of the pit.

The mine will operate on the basis of a 24-hour day, seven days per week (drilling bauxite excavation, loading, hauling and processing). Blasting will happen during daytime only.

Plateaus will be connected by haul roads running along the tops of the plateaus and designed to accommodate the selected vehicles. Haul roads will connect plateaus to one another and to the processing facility

The Project does not expect mining activities to generate any significant quantity of mine water, since most of the bauxite reserves are located above the saturated zone.

MBS project

The MBS Project includes:

- the development and exploitation of a bauxite mine north of Plateau 20 of the GAC concession and set up of infrastructures necessary to the mining operations on Plateau 20 (haul roads, mobile ore crushing plant);
- the transport of the bauxite ore by national road from Plateau 20 to the KCT at the port of Kamsar via trucks with 40 ton carrying capacity; and
- the configuration of the KCT at the port of Kamsar to allow for the stockpiling of the bauxite ore and its loading on barges. These barges will then transit to the loading point of the ore carriers located at the northern end of the navigation channel of the port.

Tiouladiwol River Dam

To provide water requirements for mining operations, GAC will construct a dam in the Upper Tiouladiwol River, to 14 metres height at an elevation of 74 metres. This dam is based on the location presented in the 2008 refinery project Social and Environmental Impact Assessment (SEIA). The dam will be smaller than the one described in the 2008 SEIA, to be built where the upstream dam coffer was proposed in 2008.

2.2.3 Port

Port Facilities

In 2007, GAC developed a compacted sand platform over the entirety of its port concession area at Kamsar, to the south of the existing ANAIM rail line, and north of the Dougoufissa Creek flowing into the Rio Nuñez estuary.

As part of the bauxite export Project, this platform will include a rail terminal and train offloading facilities, a bauxite stockpile area as well as a reclaiming and conveyor transport to load the bauxite onto vessels, at a new loading berth to be located approximately 2.5 kilometres to the west of the GAC port platform.

Supporting utilities and ancillary facilities, including water desalination, power generation, and workforce accommodation will also be constructed in the port concession.

Key activities to take place at the port will be:

- unloading of rail wagons using a dual rotary tippler;
- conveyor from bauxite unloading point to a stacker / stockpile facility, into the bauxite stockpile;
- bauxite reclaimer and loading onto a conveyor to the vessel loading berth; and
- use of transshipment vessels to complete the loading of vessels partially loaded at the berth and then topped up in a dedicated transshipment area located outside the entrance of the channel.

The port infrastructure area will be powered by diesel generators. The power requirements are estimated to be less than 25 megawatts.

A reverse osmosis desalination plant will also be provided within the port concession area, to treat water pumped from the Dougoufissa Creek, with a production capacity of 450- 600 cubic metres per day of treated water.

Dredging

As presented above, GAC considered different options for the loading and export schemes of the ore. The preferred one would be to export 100% of the bauxite in Capesize vessels without using transshipment vessels, allowing vessels to be loaded directly at the berth. For this option, the existing navigation channel in the Rio Nuñez estuary would need to be increased from its existing width by an additional 80 metres. In addition, the channel would need to be deepened from its current 9 metres depth, to 19 metres.

The dredging programme will be implemented in successive phases. This will include the initial widening and deepening of the channel to allow Newcastlemax vessels to sail to the berth to be partially loaded, and then topped-up at a transshipment site. At a further stage, the channel will be deepened to allow Newcastlemax vessels to be fully loaded at the berth and sail at mean high water neap tides. The exact schedule of these deepening stages is not yet defined and will be influenced by economics determined by the bauxite international market.

The execution of this dredging programme would generate 6 million cubic metres of dredging sediments in the first phase (widening and deepening) and an additional 28.4 million cubic metres in total for the further phases (deepening for fully loaded Newcastlemax passage).

2.2.4 Rail

GAC is participating in the expansion of the main rail line between Kamsar and Sangarédi as part of a multi rail user agreement with other mining companies in the area (CBG and Rusal (COBAD)). CFB is the

concessionaire of the railway and will therefore be responsible for the expansion and operation of the 135 km rail track. Land-take will involve a 50 m to 75 m strip of land along the current rail line.

At this point in time the exact footprint of the rail expansion project is not known, however it will likely involve the installation of multiple rail loops at strategic points. As CFB has publically undertaken to implement IFC Performance Standards, it is expected that work will be managed under a social and environmental management plan compliant with IFC and other international standards of best practice.

Although GAC is not directly involved in the rail expansion project it will seek to ensure that social and environmental management undertaken by CFB is in full compliance with IFC, AfBD and CBG's own standards and CBG's SEMP, as well as with GAC's standards and SEMP. This will include: reviewing the social and environmental management plan document to be developed by CFB and participating in regular coordination meetings with CFB personnel relating to social and environmental management activities associated with the rail line expansion. GAC will also conduct independent monitoring and evaluation to assess social and environmental impacts on the communities within its concession area.

3. PURPOSE AND SCOPE

In 2015 scoping consultations were held for the preparation of the Social and Environmental Impact Assessment (SEIA) update for the Bauxite Export Project, undertaken by GAC with support from consultants ERM and INSUCO. Further consultations took place as part of subsequent SEIA update stages, for social and environmental baseline data gathering as well as discussion / evaluation of likely social and environmental opportunities and impacts from the Project, and preferred enhancement/ mitigation approaches. Several rounds of additional consultations were undertaken as part of a dedicated SEIA update study for GAC's proposed dam and reservoir in the Tiouladiwol valley. While these consultations provided many stakeholders (individuals and groups of individuals) with an opportunity to be informed on the Project, and express their opinions, concerns and expectations, GAC suggests that further ongoing consultations are appropriate to support the Project's community relations and social acceptance through the planning, construction and operation phase of the Project. Further specialist studies and continued engagement will assist with ensuring all relevant issues are captured and that all stakeholders feel they have had an appropriate level of information on the Project, and a chance to express their expectations, suggestions and concerns.

This Stakeholder Engagement Plan (SEP) will assist GAC with managing and facilitating future engagement through the various stages of the Project's life cycle from exploration through to construction, operations, closure and rehabilitation. Specific SEP-annual operating plan are developed with specific details regarding implementation of the plan (Ref: Plan de dialogue avec les parties prenantes-communautés-Fev. 2015, SEP for RAP)

This SEP adopts an inclusive life-of-mine perspective. It details engagement undertaken with stakeholders during the feasibility stage of the Project and serves as a guide to engagement during the Project construction and operations stages. This version of the SEP is an initial guide to engagement and will need to be revised following Project approval to inform on-going stakeholder engagement through the various stages of Project development, construction, operation and closure/rehabilitation.

3.1 OBJECTIVES OF THE STAKEHOLDER ENGAGEMENT PLAN (SEP)

The SEP seeks to define a technically and culturally appropriate approach to consultation and disclosure. The goal of this SEP is to improve and facilitate decision making and create an atmosphere of understanding that actively involves project-affected people and other stakeholders in a timely manner, and that these groups are provided sufficient opportunity to voice their opinions and concerns that may influence Project decisions. The SEP is a useful tool for managing communications between GAC and its stakeholders. To feed the stakeholder

engagement process in a timely manner allowing the SEP to be regularly updated, the stakeholders identification and analysis will continue throughout the life of the project on periodic and as needed basis.

The key objectives of the SEP can be summarised as follows:

- Understand the stakeholder engagement requirements of Guinean legislation;
- Provide guidance for stakeholder engagement such that it meets the standards of International Best Practice, including International Finance Corporation (IFC) Performance Standards (IFC PS), African Development Bank (AfDB) Integrated Safeguards System (AfDB ISS) and the Equator Principles;
- Identify key stakeholders that are affected, and/or able to influence the Project and its activities;
- Identify the most effective methods and structures through which to disseminate project information, and to ensure regular, accessible, transparent and appropriate consultation;
- Guide GAC to build mutually respectful, beneficial and lasting relationships with stakeholders;
- Develops a stakeholders' engagement process that provides stakeholders with an opportunity to influence project planning and design;
- Establish formal grievance/resolution mechanisms;
- Define roles and responsibilities for the implementation of the SEP;
- Define reporting and monitoring measures to ensure the effectiveness of the SEP and periodical reviews of the SEP based on findings; and
- Assist GAC with securing and maintaining a social licence to operate throughout the life of the Project.

4. REGULATORY AND GOVERNANCE FRAMEWORK

GAC is negotiating a financial package with a consortium of banks including the IFC and the AfDB. Accordingly, GAC is required to comply with the IFC PS and the AfDB ISS (or AfDB OS). These requirements also stipulate the need for a full Social and Environmental Impact Assessment (SEIA). The Project undertook an SEIA in 2015 and an environmental permit No. 0133/MEEF/CAB/BGEEEE/2016 was issued on the 23 February 2016 by the Guinean Ministry for the Environment, Water and Forests (MEEF). Following a review of the SEIA report, the Lenders required a number of supplementary social and environmental studies and documents necessary to meet the IFC PSs and AfDB ISS and international good practice. The package of supplementary social and environmental social documents, as well as the SEIA report (2015) together form the Project SEIA.

This Stakeholder Engagement Plan forms part of the supplementary social and environmental documents that is part of the Project SEIA and allow GAC to manage its environmental and social obligations, maintain strong stakeholder support and retain its "social license to operate".

5. KEY PRINCIPLES OF STAKEHOLDER ENGAGEMENT

5.1 WHAT IS STAKEHOLDER ENGAGEMENT?

According to IFC PS 1, paragraph 12: "*Stakeholder engagement is the basis for building strong, constructive, and responsive relationships that are essential for the successful management of a project's environmental and social impacts. Stakeholder engagement is an ongoing process that may involve, in varying degrees, the following elements: stakeholder analysis and planning, disclosure and dissemination of information, consultation and participation, grievance mechanism, and ongoing reporting to Affected Communities. The nature, frequency, and level of effort of stakeholder engagement may vary considerably and will be commensurate with the project's risks and adverse impacts, and the project's phase of development.*"

Stakeholder engagement should provide information that is timely, relevant, understandable and accessible in a culturally appropriate manner, and free of manipulation, interference, coercion and intimidation¹. Effective stakeholder engagement develops a “social licence” to operate and depends on mutual trust, respect and transparent communication between a company and its stakeholders. It thereby improves a company’s decision-making and performance by²:

- Controlling costs: Effective engagement can help project proponents avoid costs, while its absence can be costly both in terms of money and reputation;
- Managing risk: Engagement helps project proponents and communities to identify, prevent, and mitigate environmental and social impacts that can threaten project viability;
- Enhancing reputation: By publicly recognising human rights and committing to environmental protection, project proponents and financial institutions involved in financing the project can boost their credibility and minimise risks;
- Avoiding conflict: Understanding current and emerging issues such as tension around influx and employment opportunities;
- Improving corporate policy: Obtaining perceptions about a project, which can act as a catalyst for changes and improvements in corporate practices and policies;
- Identifying, monitoring and reporting on impacts: Understanding a project’s impact on stakeholders, evaluating and reporting back on mechanisms to address these impacts; and
- Managing stakeholder expectations: Consultation also provides the opportunity for exploration and mining licence holders to become aware of and manage stakeholder attitudes and expectations.

5.2 PRINCIPLES OF EFFECTIVE STAKEHOLDER ENGAGEMENT

Stakeholder engagement is usually informed by a set of principles defining core values underpinning interactions with stakeholders. Key principles based on IFC recommendations include the following³:

- Providing meaningful information in a format and language that is readily understandable and tailored to the needs of the target stakeholder group(s)
- Providing information in advance of consultation activities and decision-making
- Disseminating information in ways and locations that make it easy for stakeholders to access it
- Respect for local traditions, languages, timeframes, and decision making processes
- Two-way dialogue that gives both sides the opportunity to exchange views and information, to listen, and to have their issues heard and addressed
- Inclusiveness in representation of views, including women, vulnerable and/or minority groups
- Processes free of intimidation or coercion
- Clear mechanisms for responding to people’s concerns, suggestions, and grievances
- Incorporating feedback into project or program design, and reporting back to stakeholders

¹ European Bank for Reconstruction and Development, Performance Requirement 10, paragraph 5 (May 2014).

² World Resources Institute Report: Breaking Ground: Engaging Communities in Extractive and Infrastructure Projects (2009)

³ IFC Stakeholder Engagement: A Good Practice Handbook for Companies Doing Business in Emerging Markets (2007)

5.3 STAKEHOLDER ENGAGEMENT CONSIDERATIONS

The following considerations should be made when planning for stakeholder engagement⁴:

- **It takes time and resources:** It takes time to develop and build trust-based relationships with stakeholders. The consensus from practitioners is that from the outset relationships with stakeholders should develop and grow, and that these relationships should be nurtured and not fostered to fade. Additional stakeholders might be identified that also want to be engaged. No willing stakeholder should be excluded from the process of engagement. Some stakeholders will need to be educated about the concept of engagement itself, as well as on the complex issues requiring specialised and technical knowledge. These demands can increase the cost of consultation required to meet external expectations, and often this occurs at a time when a project lacks the internal capacity and resources to implement a broad engagement strategy.
- **It raises expectations:** Stakeholders can have unrealistically high expectations of benefits that may accrue to them from a project. As such project proponents from the outset must be clear on what they can and cannot do, establishing a clear understanding of their roles and responsibilities. In developing countries, project proponents are often expected to take on responsibilities that are usually the responsibility of the government (e.g. infrastructure development and the provision of healthcare and education facilities). This behaviour should be avoided, as by doing so, governments may be relieved of delivering on their responsibilities and a project proponent will be burdened with projects beyond the realm of their expertise. Instead the engagement processes should provide project proponent with an opportunity to develop relationships with stakeholders and potential project partners who can assist with implementing corporate social responsibility projects.
- **Securing stakeholder participation:** Cultural norms and values can prevent stakeholders from freely participating in meetings. Often there are conflicting demands within a community, and it can be challenging for a project to identify stakeholders who are representative of common interests. This might be avoided by employing local community liaison officers who are sensitive to local power dynamics, which requires project proponents developing an awareness of the local context and implementing structures to support and foster effective stakeholder engagement.
- **Consultation fatigue:** Moreover there is evidence to suggest that stakeholders can easily tire of consultation processes especially when promises are unfulfilled, and their opinions and concerns are not taken into consideration. Often stakeholders feel their lives are not improving as a result of a project and this can lead to consultation meetings being used as an area to voice complaints and grievances about the lack of development. This might be avoided by coordinating stakeholder engagement during an SEIA process, and by ensuring practitioners do not make promises to stakeholders, but rather use the public consultation process as an opportunity to manage expectations, challenge misconceptions, disseminate accurate project information, and gather stakeholder opinions which are feedback to the project proponent and other project specialists.

The remainder of this Stakeholder Engagement Plan will assist GAC to manage these considerations of stakeholder engagement and attain the overarching objective of free, prior and informed consultation.

⁴ The Stakeholder Engagement Manual, Volume 1: The Guide to Practitioners' Perspectives on Stakeholder Engagement (2005)

6. STAKEHOLDER IDENTIFICATION AND ANALYSIS

6.1 INTRODUCTION

Stakeholder identification and analysis is the critical first step in stakeholder consultation and engagement. This section addresses the following themes in this context:

- Approach to the identification of stakeholders
- Description of the stakeholder groups
- Analysis of stakeholders to determine the extent to which they are potentially impacted by the Project, or could exert influence upon it.
- Overview of consultation and engagement approaches and tools relevant to various life-cycle phases.

6.2 STAKEHOLDER IDENTIFICATION APPROACH

Identification of stakeholders is a first and essential step in effective engagement. For the purposes of this SEP, stakeholders were identified through previous consultations. Stakeholder identification is a particular priority at the beginning of the SEIA process, but additional stakeholders will be identified after the completion of the SEIA (with all Project Component-MBS, Rail, Dam etc) has been completed. All stakeholders are recorded in the database (Borealis). The database is continuously updated throughout the life of the Project as the activities evolves.

Following identification, stakeholder analysis describes stakeholders in terms of project impacts, and their potential to influence the project. A stakeholder analysis will inform the selection of engagement approaches and tools. This analysis has the potential to enhance the effectiveness of engagement.

6.3 DEFINITION OF STAKEHOLDERS

The IFC's Handbook on Stakeholder Engagement (2007) defines stakeholders as "persons or groups who are directly or indirectly affected by a project, as well as those who may have interests in a project and/or the ability to influence its outcome, either positively or negatively."

Stakeholders include locally affected communities and individuals and their formal and informal representatives, government, politicians, religious leaders, civic organisations, and other groups with special interests, the academic community, employees, their families and employee representatives, other businesses, shareholders and joint venture partners.

6.4 STAKEHOLDER ANALYSIS

Stakeholder analysis involves an in-depth look at stakeholder group interests, how they will be affected by the Project and to what degree, and what influence they could have on the Project. The answers to these questions provides the basis for building GAC's stakeholder engagement strategy. It is important to keep in mind that not all stakeholders in a particular group or sub-group will necessarily share the same concerns or have unified opinions or priorities⁵.

⁵ IFC Stakeholder Engagement: A Good Practice Handbook for Companies Doing Business in Emerging Markets (2007)

GAC's stakeholder analysis will consider the following⁶:

- What type of stakeholder engagement is **mandated by law** or other requirements?
- Who will be **adversely affected** by potential environmental and social impacts in the Project's area of influence?
- Who are the **most vulnerable** among the potentially impacted, and are special engagement efforts necessary?
- At **which stage** of the Project development will stakeholders be most affected (e.g. construction, operations, closure and rehabilitation)?
- What are the various **interests** of the Project stakeholders and what influence might this have on the Project?
- Which stakeholders might help to **enhance** the Project design or reduce Project costs?
- Which stakeholders can best **assist with the early scoping** of issues and impacts?
- Who strongly **supports or opposes** the changes that the Project will bring and why?
- Whose **opposition** could be **detrimental** to the success of the Project?
- Who is it **critical** to engage with first, and why?
- What is the **optimal sequence** of engagement?

7. SUMMARY OF PREVIOUS STAKEHOLDER ENGAGEMENT ACTIVITIES

The section presents the engagement activities that have been undertaken, up to April 2016.

7.1 STAKEHOLDER ENGAGEMENT FROM 2001 TO 2008

At the time of the Project's inception, the development plan included a 3 million tonnes per annum alumina refinery, power station, alumina terminal at the port of Kamsar and associated infrastructure.

The Project has a long history with stakeholder engagement activities going at least as far back as February 2001 as part the Social and Environmental Impact Assessment undertaken by the Project proponent at the time, Boké Alumina Corporation (BAC). Further stakeholder engagement was undertaken during the early works and development phases by Global Alumina, including the following:

Public Consultation and Disclosure Plan – November 6 2002

- Port EIA – June – 2004
- Port RAP – June 2005
- Refinery EIA – January 2005
- Refinery RAP – October 2005
- Consultation Report – December 2005
- An Addendum to both EIAs – March 2006

In 2007, Global Alumina entered into a joint venture with BHP Billiton, DUBAL (Dubai Aluminium) and Mubadala Development Corporation to form Guinea Alumina Corporation (GAC). GAC retained an independent consultant to undertake a gap analysis of the Social and Environmental Impact Assessments undertaken up to 2007. In their report (September 2007) they made the following comments with regards to public consultation and stakeholder engagement:

⁶ Ibid

“Particularly in the areas of public consultation and stakeholder engagement, the project appears to have done a much better job on the substance of the requirements and on the ground than is reflected in the current documentation. The project appears to have carried out in-depth consultations with potentially affected communities and been responsive to the communities’ concerns. Proposed facilities have been relocated in response to concerns raised by communities, for example. This bodes well for ongoing relationships with local stakeholders, and when documented, will assist IFC substantially in its decision making around whether free, prior and informed consultations have occurred, and in addition, whether broad community support for the project has been achieved.”

In July 2008, Knight Piésold was engaged by GAC to consolidate and update the historical SEIA documents into a single, comprehensive SEIA. The 2008 SEIA described the stakeholder programme between 2001 and 2008 as such:

- **First Phase** – Planning and scoping of the EIA (Environmental Impact Assessment) process (completed between 2001 – 2002);
- **Second Phase** – Examination and validation of the EIA report, as well as planning and of resettlement programme (completed between 2004 – 2005); and
- **Third Phase** – Ongoing engagement during construction and operations (started in 2006 and continuing as full construction begins in early to mid-2008).

The project development was put on hold by the shareholders in February 2009.

7.2 STAKEHOLDER ENGAGEMENT POST-2008

Following the hiatus in project development in February 2009, stakeholder engagement was largely focused on informing the key stakeholders (communities, local authorities and the national government) that the shareholders were committed to the project, however the prevailing conditions (global financial crisis, falling commodity prices and political uncertainty in Guinea) had resulted in a decision to reconsider the scale and schedule for development.

In May 2013, Mubadala and DUBAL acquired the remaining shares in the project and transferred the ownership of GAC to the newly formed Emirates Global Aluminium (EGA). In November 2013, an amendment protocol was signed with the Government of Guinea relating to a US\$ 5 billion investment in two phases. The amended GAC project scope was unanimously ratified by the National Assembly of Guinea at the end of June 2014 to permit phased implementation of the project, with bauxite mining for export purposes in Phase I (as described in Section 2.2) and alumina refining in Phase II.

In June 2014, GAC engaged the international sustainability consultancy ERM (Environmental Resources Management) in partnership with Guinean social consultancy INSUCO to prepare an SEIA Addendum study, covering the GAC’s proposed export-grade bauxite project. The SEIA Addendum was undertaken by GAC with support from ERM, in collaboration with INSUCO, Guinée Ecologie, and inputs from the Wild Chimpanzee Foundation. The SEIA Addendum was published in October 2015 and included an associated Stakeholder Engagement Plan dated April 2015. The Stakeholder Engagement Plan was intended to serve as a guidance document to manage and record interactions between the Project and stakeholders at different stages of the project’s design and execution. Its objectives were to:

- complete and update the Project stakeholders list;
- report on the initial stakeholder process undertaken as part of the scoping phase of the SEIA Addendum;
- define the basis for compliance with regards to external stakeholder engagement required as part of the Project;

- provide a framework for stakeholder communication to help ensure that the Project is:
 - well understood by external stakeholders; and
 - build constructive relationships between the Project and stakeholders;
- provide a framework for monitoring stakeholder relationships and identify new issues, expectations and potential constraints that may be raised by stakeholders;
- facilitate GAC's community engagement and support strategy; and
- facilitate multilateral communication among stakeholders and ensure disclosure of information as widely and transparently as possible.

7.3 DETAILS OF THE STAKEHOLDER'S ENGAGEMENT UNDERTAKEN AS PART OF THE SEIA ADDENDUM AND UPDATE OF THE SEP

7.3.1 Overall SEIA consultations

Stakeholder engagement in the Project's area of influence was undertaken across the execution phase of the SEIA addendum study in 2014, 2015 and throughout 2016⁷.

Various rounds of stakeholder engagement took place as part of the initial SEIA scoping study, followed by baseline studies and the social impact assessment studies. The following groups of stakeholders were engaged:

- Representatives of various GAC Project's employees;
- The regional, prefectural and sub-prefectural authorities;
- Representatives of the Communes Rurales where the project will be implemented;
- Populations of local communities through "public meeting" approaches and selected focus groups;
- Technical services at prefectural and sub-prefectural levels (water and forestry, fisheries, rural development, promotion of women and children, education, labor inspection, quality control, etc.);
- Port authorities (Kamsar);
- The state security services (Police, customs);
- Health and education facilities staff;
- Local private companies; and
- Representatives of civil society (health committee, Islamic league, youth associations, NGOs, etc.).

The first objective of the meetings with these active stakeholders from the project area was to disclose a consistent level of information on the Project status, proposed configuration and implementation plans. Those meetings were then devoted to the inventory of stakeholder's views on the Project and expectations towards the Project, in order to prepare more specifically the social impact study.

Local communities were directly engaged through three iterations of stakeholder engagement campaigns (scoping phase / baseline study phase / impact assessment phase), where GAC and the SEIA Consultants engaged with traditional authorities in each community, representatives of various civil society organizations (women's associations, agricultural groups, youth associations).

As part of the baseline study phase in the Mine area, a census of local communities located within the Project's area of influence was undertaken and quantitative socio-economic baseline data was collected, as well as an

⁷ SEIA-addendum main report completed but sub-components are still being studied by the time this SEP is documented. The engagement with stakeholders is an ongoing process that goes beyond the SEIA-Addendum phase. As such, it is anticipated that the studies will continue in 2017 and throughout the life of the project. For the purpose of this document, engagements undertaken are described till end of 2016.

inventory of cultural heritage and key ecosystem services (e.g. springs, forestry areas etc.). As part of this survey, GAC and the SEIA team engaged with a large number of community members and heads of households, providing a consistent level of information on the Project, and collecting feedback on community expectations and concerns. Individual interviews with heads of households and selected civil society representatives (e.g. women's associations) allowed to collect a fine level of data on local household and community structures, livelihoods and social sensitivity/ vulnerability, regardless of gender, ethnicity, language (recruitment of a team of multilingual investigators) or social status. Engagement was undertaken in local language by a joint team of international and Guinean experts and surveyors.

Random sampling followed the census, in order to implement an extensive household surveys campaign and deepen the initial individual interviews with hundreds of heads of household heads (386) who were fully representative of the local population diversity.

Finally, within the specific context of field missions dedicated to the social impact study, fifty public meetings involving about 1900 people over 15 years (nearly 20% of the total adult population recorded) were conducted in the communities of the mine area. The participants of those meetings were informed of updates and consulted once again.

7.3.2 Consultation of Women, Vulnerable Populations and Minority Groups

The quantitative baseline survey in the Mine area allowed to speak directly to a broad and representative sample of communities living along the project, including the most vulnerable groups within the local population. Whether economic or social vulnerability, the sampling done allowed to engage with a number of households headed by very young, old and especially women, while patrilineal land management rules out women's property rights so that women do not have full access to resources, opportunities and public services needed to improve living standards for themselves and their families.

More generally, the perspective of households with limited access to various factors such as land, political power or mobility (that can therefore be de facto seen as socially vulnerable entities) could be considered while implementing the social studies. In terms of economic vulnerability, household surveys have once again been carried out on a representative sample of the population which included the poorest households. Thus, the total incomes (monetary and non-monetary) of nearly 60% of the surveyed households were estimated below US \$ 1.68 per day and per consumption unit.

While conducting qualitative surveys on cultural heritage, local governance, access to basic services, economic activities (agriculture, livestock, harvesting natural resources), mobility or land tenure, the objective was once again to address the most diverse strata of the population, with particular attention to vulnerable groups such as women and youth. The implementation of individual and group interviews with groups of women and youth representatives ("focal" groups) allowed reporting their practices and views.

About 50 public consultations were conducted in the local communities during the social impact assessment phase. Those consultations gathered about 1 900 adult members of local communities, i.e. nearly 20% of the total adult population registered in the area. Besides being formally invited to attend these meetings, women, older people and younger people have consistently been invited to raise their concerns.

7.4 ENGAGEMENT WITH SPECIFIC GROUPS

7.4.1 Herders

In the mine area, pastoralism is a traditional activity and a cattle breeding is widespread. According to the household surveys⁸, approximately 21% of households own cattle, including small owners who are not livestock breeders. Households own on average 5.5 cattle heads. It should be noted that more households own cattle in the Sangarédi Sub-Prefecture compared with those in the Tanéné Sub-Prefecture (41.2% against 11.3%) and their herds are also larger (9.7 against 3.3 heads). The Sangarédi Sub-Prefecture is mainly populated with Fula people who are traditionally involved in cattle breeding while few Landouma households are involved in this activity.

Only 16% of cattle-breeding households conduct this activity as their primary one.

The GAC concession appears to be considered as an area of pastures and has become an area favored by transhumant herders. Livestock and pastures are present everywhere irrespective of the season. The river Tinguilinta is no obstacle to transhumance. Herds cross it through the bridge between Doubhi and Tinguilinta.

Two types of transhumance may be observed:

- Long-distance transhumance involves men with large herds, whether they come from the Concession or not. It takes place during the dry season. In the Concession, long-distance transhumance takes two forms:
 - Some herdsmen may cover long distance (e.g. between the Téliimélé and Boffa areas) and only cross the Concession.
 - Some others, often from neighbouring regions, settle in the Concession throughout the rainy season. Although their presence is temporary, they come back every year. Six temporary settlements were geotagged in the Tanéné Sub-Prefecture. Conversely, some herdsmen from the Concession such as in Dogoyombe, leave the Concession to go to the south of the Boké Prefecture or toward Boffa.
- Short-distance transhumance consisting of moving village herds according to the growing season (to avoid large crops during rainy season and market gardening areas during the dry season). It takes place between neighbouring village territories.

Transhumance movements that are depicted on the map overleaf show how livestock breeders are keen to move according to the geographical location of pastoral resources and water points. The cattle owners from the central plateau and the foothills of Fouta Djallon, where the rivers seasonally dry up, tend to reach the coastal region during the dry season after rice harvest: there, water is available all year round, the grass keeps growing despite the absence of rain and hay is plentiful thanks to the importance of rice fields. The Mine area of the Project is thus crossed by transhumant herders from Gaoual and Téliimélé Prefectures (two spots with the largest herds from Fouta region) who walk to Boké and Boffa Prefectures on the coast.

APPENDIX 3, presents the specific engagement activities and plan for this group of stakeholders.

⁸ Source: SEIA 2015-Volume 2: Social Studies

Figure 7.1 Overview of regional seasonal movements of transhumance



7.4.2 Engagement with Herders during SEIA Consultations

Household surveys as part of the SEIA that were conducted among a representative sample of the population in the Mine area allowed engaging with a number of residents who consider herd management as their main or secondary economic activity: about one-fifth of the surveyed households consisted of livestock owner. The views of residential cattle breeders could be considered through these household surveys and semi-structured interviews devoted exclusively to farming practices in the area.

7.4.3 Boké Prefectural Association of Cattle Breeders

The GAC Community Team also engaged with herdsmen during May-June 2016 through the Boké Prefectural Association of cattle breeders. This institution has been identified as the main focal point for establishing a two-way communication between the Project and cattle owners (dissemination of information related to the mining plan, discussion about compensation measures in the event of proven impacts on pastoral activities, etc.). The leaders of the association have a special relationship with the nomadic herders who do not live perpetually in the study area, thus it is through this association that the Project aim to establish a communication with the cattle owners of neighbouring regions that may cross the Project area while organizing seasonal transhumance.

From these consultations, GAC managed to gather some information regarding transhumance tendencies in the concession area and the results are presented in the figure below. The majority of herdsmen are taking the cattle to the north part of the concession, or towards Boffa over the south limit of the concession and to Sangarédi over the east limit of the concession. Specific Engagement Plan with Herdsmen is presented in APPENDIX 3.

7.4.4 Fishermen

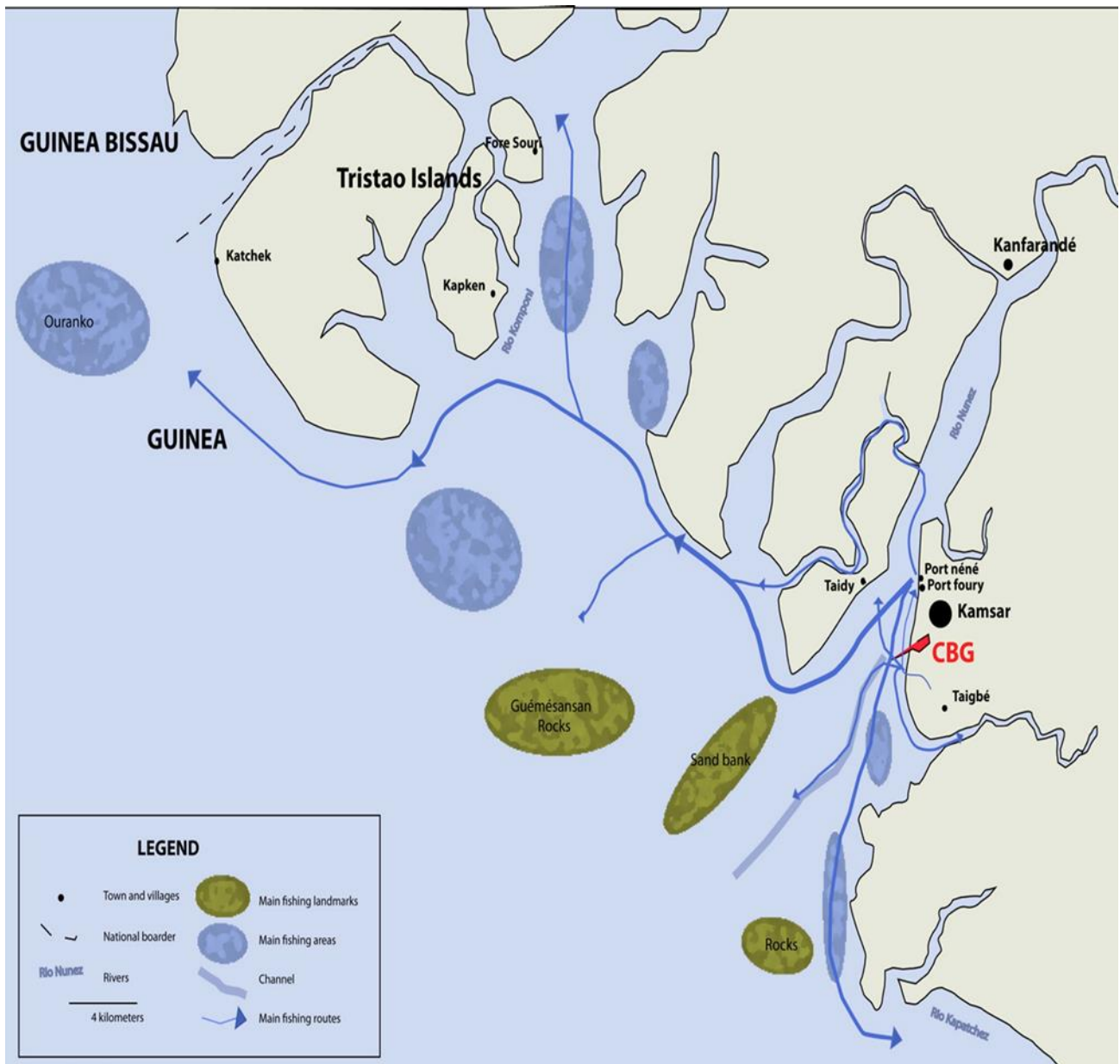
The offshore components of the Project may have impacts to fishing activities in the Rio Nunez and beyond. Some basic data were available from previous studies (2008 SEIA) and the SEIA carried out by ERM/INSUCO but remained to a limited level of detail. A supplemental survey of these activities was therefore carried out in November, 2015 to gain a better understanding of fishing, fishermen involved, and potential impacts

The survey was limited in time and in field team, the fieldwork was restricted to the communities located in the social impact area of the project, as defined by the 2015 SEIA Addendum prepared by ERM and Insuco , with a focus on the villages located in a radius of about 5 kilometers around the multi-user port terminal of the GAC project, namely:

- Port Néné in Kamsar;
- Port Fory in Kamsar;
- The villages of Taigbé and Memsenkréné;
- The village of Taidy.

The Figure 7.3 shows fishing routes and fishing grounds that were identified in the fishing survey.

Figure 7.3 Fishing routes and Fishing grounds



The construction of the GAC terminal port has potential to impact fishing resources and fishing routes for Port Néné and Port Fory fishermen, but the most severe impacts are likely to affect Memsenkrené and Taigbé villages. These two villages fish from the Memsenkrené channel, located less than 1km to the South of the future GAC jetty. They rely on fishing for subsistence, and fish is the first or the second source of income in these villages. The jetty may restrict access to sea and to fishing grounds, and the safety of fishermen may be affected. Mitigation measures are required to address these impacts on safety and livelihoods and are addressed in Section 5.11 in the Kamsar RAP.

8. PROJECT STAKEHOLDERS

The section is largely taken from the SEP (April 2015) that formed part of the SEIA (October 2015).

8.1 INTRODUCTION

For the purpose of this SEP, stakeholders are defined using the IFC's criteria described in Section 6.3.

In the context of social and environmental assessment, this does not include GAC's own personnel, since interaction with these internal stakeholders is a core business function within GAC's management structure.

History and Hierarchy of Villages on the Concession Area

8.1.1 Concession Area

Historically, the concession area was populated by Landoumas, speaking the language and practicing exclusively Landouma animism.

Over the centuries, indigenous communities have welcomed new populations in search of land. From the north of the Sub-region, a majority of Fulani have settled in the area. They are superior in number today. They also participated in the dissemination of Islam to all people in the area, although animist practices remain very pervasively present.

Nowadays, especially in the part of the concession located west of Tinguilinta River, villages populated exclusively by people Landoumas co-exist with other villages populated exclusively by Fulani populations. Mixed settlement villages are relatively rare. The Landoumas communities, even if they are a minority in number, often claim their status as founders, and therefore "legitimate leadership" in local governance.

Throughout the Project area, there are villages called "mothers" or founders. These villages are historically the first established in an area. It is the authorities of the villages that have allowed foreigners to have access to their ancestral lands to found new villages. So-called "foundation" links are thus created over time, between the new towns and villages that took them under their control for not only access to land but also to other social issues, political, economic and cultural.

Wossou village

The village of Wossou is the oldest in the area of the study area. It was founded on the directive of the Fouta theocratic king with the goal of spreading Islam and conquering new lands in the region.

In fact, there is a hierarchy among strongly established villages in the districts of the study area to the east of the river Tinguilinta (mainly villages in the Wossou district). This must be taken into account in structuring communication actions, consultation and development of the Project.

Basic information on the hierarchical relationships between some of the villages within the area is provided in Table 8.1. These relationships will be described and analysed in more detail in the social baseline study (especially in the land and cultural heritage section) and will need to be taken into account in GAC's communication strategy.

Priority should be given to keeping Wossou regularly informed. All requests to operate on /develop the land located east of Tinguilinta should be addressed to Wossou. No decision will be made without Wossou's approval, which should systematically consult with all other villages concerned.

Table 8.1 Social hierarchy and interdependence among villages east of the Tinguilinta River, GAC concession area

Villages	Authorising Village (village that gave permission for other villages to be developed on the land)	Historical Hierarchy
Villages founded by members of the Bah family of Wossou		
"Entities of Wossou territory"		
Wossou	-	Founding village
Petoun Koloni	Wossou	Members of the Bah family, founders of Wossou
Barkere		
Bhouloï Gabo		
Kewi		
Koufa		
Villages founded by outsiders, under the authority of Wossou		
Thiankoye (to be confirmed) Wadiya Tounlahy Level crossing	Wossou	Under the authority of Wossou
Villages occupied by the "former captives" of Wossou		
Soucka	Wossou	Under the authority of Wossou
Sampirin Missidé		
Sampirin Mamacira		
Sampirin Thialéré		
Bansoumaï 1-2-3		
Padan		
Petel Kindi		

8.1.2 Port Area

Historically, the indigenous people of the port area are Bagas, Landoumas and Nalous.

Nowadays, the coastal villages remain predominantly inhabited by native populations. However, the city of Kamsar is populated by representatives of many ethnic groups and nationals of neighbouring countries.

Very active in trade, a small Lebanese community has been established for several generations in Boke like in Kamsar.

8.2 KEY STAKEHOLDERS – CENTRAL GOVERNMENT AND ADMINISTRATION LEVEL

8.2.1 Ministre de l'Environnement, des Eaux et des Forêts

Environmental issues are under the authority of the Ministry of Environment, Water and Forest (Ministère de l'environnement, des eaux et forêts, acronym MEEF). MEEF is in charge of elaborating, implementing and monitoring Guinea's environmental management and sustainable development policies. The MEEF was created by Decree D/2011/047/PRG/SGG du 25 février 2011 portant attributions et organisation du Ministère Délégué à l'Environnement, aux eaux et forêts.

8.2.2 BGEEE

The Bureau Guinéen des Etudes et Evaluations Environnementales (BGEE) is responsible for overseeing the environmental permitting procedure in Guinea, and coordinating the review of environmental and social impact assessments that are submitted by project proponents as part of environmental permit applications. The BGEE

was established pursuant to Decree D/2011/047/PRG/SGG of 25 February 2011 that covered the duties and responsibilities of the Ministry of the Environment, Water and Forests.

BGEEE's main responsibilities include:

- promoting environmental issues in national policies through the use of Environmental Assessments and this in such a way as to ensure that all these issues are taken into account in policies, plans, programmes and projects;
- objectively assessing Environmental Assessments in accordance with the law (legislation and regulations, international conventions ratified by Guinea);
- determining the type and extent of any problems on existing installations through external environmental audits;
- helping to update existing and develop new legislation on environmental protection in general, and on environmental and social impact assessments in particular;
- developing and implementing guidelines, procedures and methodologies for carrying out impact assessments in line with current legislation; and
- overseeing and conducting monitoring & evaluation on the Environmental and Social Management Plan (ESMP).

8.2.3 Minister of Territorial Administration and Decentralisation

The Ministry of Territorial Administration is in charge of organising, overseeing and supporting regional and local authorities across Guinea, as well as implementing Guinea's decentralisation policy.

8.2.4 Labour Inspectorate

The Labour inspectorate operates under the Ministry of Employment and Vocational Training and is responsible for discharging the requirements of the Guinean Labour Law, specifically the dictates of the Labour Code. Their mandate is to ensure companies abide by law in respect of human resources and employment by means of :

- regular compliance inspections & audits
- review and approval of internal company procedures and policies

At a regional level, relevant to GAC operations, the Labour inspectorate is represented in cities of Kamsar, Boké and Sangarédi.

8.3 KEY STAKEHOLDERS – REGIONAL GOVERNMENT AND ADMINISTRATION LEVEL

8.3.1 Regional Governorate of Boké

The highest-level devolved body is the Governorate, which represents the government at the regional level. Prefectural authorities report weekly on their activities in the governorate, which in turn reports to the central government.

8.3.2 Prefecture of Boké

The GAC concession area is located in the Préfecture of Boké. There are numerous other mining projects within the Boké Préfecture, including CBG, RUSAL, Henan Chine, AMC and Rio Tinto/ Alcoa's Kabata project.

There is still no entity with within the Préfecture of Boké in charge of overseeing the activities of the various operators active in the area. However, ad-hoc committees are typically created once a project is permitted by the Ministry in charge of Environment, to supervise the implementation of environmental and social management plans of individual operators.

Note also that a prefectural development committee, Comité Préfectoral de Développement (CPD), has now been created following a decree from the Ministry of the Interior (4360/MATD/CAB/2013). Its members include representatives from the civil society and elected officials from the Communes in Boké Préfecture. The committee is currently in the process of structuration, and has met for the first time from September 5 to September 7, 2014, in Boké and since, without a budget, the committee is not operational

It should include seven commissions (education, health, rural development, ethics and transparency, conflict, urban development, etc.). The aim of this committee is to create a permanent consultation framework between the Prefecture and mining companies in the area, to enforce the implementation of local development plans and to involve all stakeholders concerned by the development issues in the Prefecture.

8.3.3 Security Forces (Police & Gendarmes)

Apart from high level Ministerial interaction, GAC Security mainly interacts on a regional level with the Police and Gendarme, which fall under the Ministry of Interior and Ministry of Defence, respectively. Both authorities have presence in Sangarédi, Kamsar, Boké and Tanéné. Their mandate involves maintaining and order on regional and town levels from Boké up to the Senegalese border; identifying and investigating national and local security issues (terrorism, theft, piracy, etc.). GAC Security, in particular, depends on the resources of the Gendarme as a source of security intelligence and analysis collection.

Engagement with these authorities is essentially through regular monthly and ad hoc meetings and inspection of on-site facilities.

8.4 KEY STAKEHOLDERS – LOCAL ADMINISTRATION (SUB-PREFECTURES)

Sub-prefectures are devolved administrative bodies represented by a Sub-Prefect (Sous-préfet). They have technical departments and, in theory, supervise the local authorities at Rural Commune level (there is currently a Sub-Prefecture for each Rural Commune, which is not the case for Urban Communes).

In Guinea, sub-prefectures and rural communes have the same boundaries. The headquarters of the sub-prefecture and the town are always located in the same locality.

All representatives of sub-prefectures of the Project Area have been met, either informed or consulted as part of the SEP for the SEIA.

8.4.1 Sub-prefecture of Sangarédi

Part of the Mine component of the Project Area is located within the Sangarédi Sub-Prefecture.

In 2012, the Ministry of Local Government and Decentralisation, in conjunction with the Ministry of Mines and Geology, created, through a joint decree, "Mining Area Consultation Committees", bodies whose competencies fall within the remit of the Sub-Prefecture.

The Sub-Prefect of Sangarédi confirmed that the government is soon to set up one of these committees in Sangarédi, Boké and Kamsar. They request that GAC actively participates in this committee once it is officially established. However, to the close of the version of SFP, none of the committees set up in other regions of Guinea have been implemented.

8.4.2 Sub-prefecture of Tanéné

Some of the villages within the concession area and a section of the ANAIM railway line are located within the Tanéné Sub-Prefecture.

This Sub-prefecture corresponds to the Rural Commune of the same name. Whilst in terms of infrastructure, it benefits from its proximity to Boké (its social and administrative services are nearby); it also faces strong competition from the urban area, which attracts the majority of any (social and public) investment, as well as people (notably some of Tanéné's elected officials and civil servants, who actually live in Boké).

The CBG railway line crosses the Sub-prefecture. The deputy Sub-Prefect is currently acting as the facilitator for the CBG's "Gare au train" programme, an initiative to promote safety along the railway tracks that will also be used by the GAC project and other potential users

8.4.3 Sub-prefecture of Boké

The Boké Sub-prefecture no longer exists as an administrative body having been replaced by the Urban Commune of Boké.

8.4.4 Sub-prefecture of Kolaboui

The ANAIM railway line crosses the Kolaboui Sub-prefecture, which has also received investment from CBG, however, relatively limited, in favour of community development from CBG. Many villages have settled along the ANAIM railway, on a distance of about 140 km.

8.4.5 Sub-prefecture of Kamsar

As well as the Rural Commune, the Kamsar Sub-prefecture covers both the mining town built by the CBG, the rest of the city of Kamsar and many surrounding villages whose economy is oriented towards agriculture and fishing craft.

Heavily populated and enjoying the benefits of CBG in the city of Kamsar, this Sub-prefecture is a major actor in the Prefecture in terms of governance.

Historically, the Sub-prefecture has received considerable support from CBG (water supply, electricity supply, workers' accommodation, urban development). However, the disparities between the CBG housing development and the rest of the town continue to grow.

8.5 COMMUNES LEVEL (TOWN COUNCILS)

All town councils of the Project Area were met during the SEP field mission. Representatives for Kolaboui and Tanéné communes emphasized the importance of the consultation. This was raised as an all-the-more important point as these communes have historically been neglected in Boké's local governance system.

8.5.1 Commune of Sangarédi

The Mine component of the Project is to be developed within the boundaries of the Sangarédi Rural Commune (in French: "commune rurale").

The Communal Council of Sangarédi was dissolved in 2011 for political reasons and the commune has been overseen by a Special Delegation ever since.

Under the Local Government Law, the Rural Commune is responsible for managing the commune area and for development. It establishes 5-year Local Development Plans, along with an Annual Investment Plan.

In light of this, it should be noted that mining projects are currently being developed in Sangarédi Rural Commune by both CBG and GAC, but also other mining companies including RUSAL and Henan Chine. Sangarédi Rural Commune recognises that, historically, CBG assistance has helped to make the commune what it is today. For example, the Rural Commune buildings, constructed by CBG, are in good condition and well-equipped. CBG supplies part of the town of Sangarédi with water and electricity, which is a source of pride for the Rural Commune.

The Rural Commune of Sangarédi receives 35 million GNF per year in turnover tax from CBG, a figure set in the 1990s. These provisions run until the end of the agreement of the Convention de Base, which expires in 2016.

8.5.2 Commune of Tanéné

A large part of the Project's mining activities and related infrastructure will be set within the Rural Commune of Tanéné. Many villages located within the perimeter of the mining concession, south of the rail, are part of this Commune.

The railway passes through Tanéné Rural Commune. Three other mining companies, CBG, RUSAL (COBAD) and AMC also intend to implement activities in this commune, in particular the transportation of bauxite by rail (and possibly by barge on the Rio Nuñez, for the AMC project).

8.5.3 Commune of Boké

The ANAIM railway crosses Boké Urban Commune, passing through the district of Correrah, Madina. This railway line is currently being used by CBG and is to be also used by the GAC project in the future.

The commune of Boké is more densely populated than its neighbours. The most recent population census was carried out in 2014, but the definitive results have not been published. Therefore, they are not available. The commune has some infrastructure and a number of services, mostly related to education and health. For example, there is a vocational training centre and a National School of Mines and Geology.

CBG supplies a certain volume of electricity to the public company Electricité de Guinée (EDG) for the commune at a preferential rate. EDG is responsible for marketing this in the city. In addition, CBG distributes water via a water network in the town centre and boreholes have also been drilled in some areas. Retention basins have been built to supply water to the rest of the town (through an African Development Bank project).

The Urban Commune of Boké receives 90 million GNF in turnover tax from CBG. This is a fixed amount, established in the 1990s as for Rural Commune of Sangarédi.

8.5.4 Commune of Kolaboui

Overall, the Rural Commune of Kolaboui is very similar to that of Tanéné in that the railway passes through it and the only investment has come from CBG. In this Rural Commune, the main investments related to development are made by the State and by CBG Project.

As a matter of illustration, the Urban Community of Kolaboui receives annually GNF 25 million (US \$ 3 500 approximately) CBG in tax revenues for community development purposes. This is a fixed amount, as in other cities, determined in the 1990s.

8.5.5 Commune of Kamsar

The Rural Commune of Kamsar is in the same position as its Sub-Prefecture as it receives many positive benefits from CBG, but has to deal with disparities between its rural and urban areas and between the CBG housing development and the town.

Kamsar is one of four communes that receives a disbursement of 50 million GNF from turnover tax paid by CBG and which has been receiving community investment for more than 40 years.

The public services provided by CBG, namely water, electricity and access to ANAIM healthcare services, are a constant cause of concern (and complaint) to the ever-increasing population.

8.6 DISTRICTS AND SECTOR WITHIN THE CONCESSION AREA

The villages located within the future mining zone of the concession area are distributed among eight districts (i.e. subdivisions of rural communes). In each of this district, some sectors are directly located within the Project mining area:

- Balandougou: 3 sectors;
- Boulléré: 20 villages;
- Wossou: 3 sectors;
- Soucka: 3 sectors;
- Dambantian: 7 sectors;
- Tanéné-Centre: 1 sector;
- Kintao Daconta: 4 sectors; and
- N'Daghara: 1 sector.

The existence of sectors is not mentioned in the Local Collectivités Code (Local Government Code, 15 May 2006). The area is a territorial unit which groups most often a village and its hamlets.

Local people usually give greater legitimacy in terms of representation, to their chief sector rather than to their chief district president. At the micro-local level, Village Leaders-Elders and Village Chiefs, usually from the founding families, for their part, have a strong social legitimacy.

In fact, the potentially impacted communities have largely insisted that the information on the Project, and any form of assistance (support for projects, financial, compensation, etc.) are managed at the sector level and Heads of village. The participation of district presidents, Communes and Sub-prefectures is encouraged to guarantee smooth operations.

As mentioned above, the village leaders/chiefs and the elders, usually from the founding families have a strong social legitimacy. From a cultural perspective, it is often important to engage with the villages primarily through these leaders/elders. Engagement should not exclude other residents of the villages; however, some degree of respect, deference and priority needs to be placed on these culturally recognised people.

8.7 CIVIL SOCIETY ORGANISATIONS

There are a large number of civil society organisations in the region of Boké. There is also official civil society representation within each Sub-prefecture, which is itself represented at prefectural level through prefectural and sub-prefectoral committees for civil societies. These officeholders are usually invited to attend large public debates and may also mediate in conflict resolution processes.

8.8 NGOS

There are several NGOs working within the footprint of the Project. One of the main organisations is the Centre du Commerce International pour le Développement (CECIDE) as it works in the mining sector, on Corporate Social Responsibility (CSR) and on protecting people's interests.

CECIDE's main areas of activity include advocacy, providing advice, and local authority and public capacity-building on governance and transparency. It also acts as a civic watchdog on governance and transparency and is active in lobbying on this issue. It receives funding through calls for proposals or from partners working on the same issues, thus enabling it to remain entirely independent of the mining operators.

In the Sangarédi area, CECIDE has conducted awareness-raising activities and works with three paralegals, who specialise in the areas listed above, defending the local people's interests. They have some knowledge of the Mining Law and of the provisions relating to resettlement and compensation.

Another NGO working in the area is the Centre for International Studies and Cooperation (CECI: Centre d'études en Coopération internationale) based in Montreal, Canada, which has offices in Conakry. CECI's mission is to build the development capacities of disadvantaged communities. For a number of years now it has been working with the devolved (i.e. prefectural and sub-prefectoral) and decentralised (Rural Communes and districts at within rural localities, Urban Commune and neighbourhoods within urban localities) authorities' technical departments in the region of Boké on the Local Development Plans and Annual Investment Plans.

Representatives of the Sangarédi branch of Initiatives et Actions pour l'Amélioration de la Santé des Populations (INAASPO) were consulted. This NGO has already worked with GAC on an HIV/AIDS awareness-raising and survey programme that was implemented in the Project area in 2008-2010 (the 20 villages in the north of the concession, along the railway and the port). At that time, the HIV/AIDS prevalence rate stood at 4.5%, far higher than the national average, which can be explained by the fact that the mining areas tend to attract jobseekers, but also that the presence of Project personnel and increased in-migration tends to increase the occurrence of prostitution. This NGO also works with the NGOs "Faisons Ensemble" (2011/2013) and "Stop Palu" to combat malaria.

In the town of Boké, the NGO CADI (Cellule d'appui au développement intégré) is made up of several dozen professionals working to provide support to local authorities. CADI fulfils an important mediation and crisis resolution role within the Préfecture of Boké, often being called upon by the authorities and local people to mediate in disputes. The 25 executive board members are based in Boké, but each of the Sub-prefectures is represented on this board. CADI has already worked with the GAC project on environmental, road safety and health issues.

Lastly, there is also the NGO CEFACAM (Centre d'encadrement et de formation Ami Camara), which specialises in community communication and working with women. This NGO has also already worked with the GAC project.

International Conservation/Environmental NGO's such as World Conservation Society, WCF, especially the one related to conventions and treaties signed/ratified by GAC.

A list of NGOs and associations identified in the Boke Prefecture to be working within the mine area is provided in APPENDIX 2. Associations and Cooperatives

Numerous local associations have been formed in the three project areas. The majority of these have a fairly limited scope of action and resources, but good knowledge of the situation on the ground.

There are groups of mainly farming associations in each of the three regions. The Sub-Prefect of Kamsar reported there are 488 groups in the town of Kamsar alone. These are individual associations that work together and help each other with revenue-generating activities, such as market gardening, craft trades, agricultural processing, etc. These cooperatives are always on the lookout for new sources of funding and technical support.

However, it is important to note that the local community's expectations with regards to the Project are extremely varied, and are likely to exceed the reasonable commitments that GAC may envisage for local community development. Managing people's expectations is therefore key, and requires thorough control of Project communications on the possible benefits related to the Project or goodwill community support actions that GAC may wish to undertake.

8.8.1 Youth

Youth organisations are a traditional occurrence in Guinean society; they represent a wide age range, from adolescence to the beginning of old age; they are mainly composed of men and benefit from a high legitimacy and a strong influence on society.

They play a fundamental role in the communication between the project companies, authorities and communities. They are often the main organizations carrier of social claims and demands.

8.8.2 Women

There are numerous women's organisations in the area, most of which are involved in market gardening or small-scale agricultural processing activities.

Women's associations are located in the cities of Sangarédi, Boke Kamsar and are well-structured organizations. However, they always lack of funds. They bring together many adherents and enjoy a strong legitimacy and social influence.

8.8.3 Livestock breeders

Livestock breeders are form clusters at District level, Unions at Sub-prefectures level, all under a Herders Association at the prefectural level. Only the latter now seems operational, with a mandate covering conflict resolution, prevention of theft, health and transhumance corridors management.

8.8.4 Fishermen

Kamsar is one of the biggest fishing ports in Guinea after Boulbinet in Conakry. The main port is Port Néné and a number of landing stage/jetty- namely Fory, Daprass etc. Each fishman belongs to one and other of these facilities. These fishing facilities are managed by "Comite de gestion", members are fishermen, These committees have the mandate to manage the comings and goings from the fishing facilities, the maritime fishermen traffic, conflicts and any other matters that concern the fishmen and their activity.

8.9 OTHER STAKEHOLDERS

8.9.1 Religious Authorities

The Council of the Mosque plays an essential part of influence since Islam is the main religion. Because of its charge of guiding the population, it has the ability to influence the village opinion and broadly influence the opinion of the local authorities.

8.9.2 Local Entrepreneurs

Local entrepreneurs will have an interest in the Project and potential opportunities for them to do business with GAC and GAC's contractors. Although they have limited ability to influence the Project, they will have a reasonable level of interest.

8.9.3 Contractors

GAC's contractors will potentially have the ability to influence the Project, especially from a cost and schedule perspective. Keeping contractors informed and properly engaged, especially on issues related to industrial and employee relations will be important. They will also be the stakeholders physically working in the project areas and appropriate engagement on social and environmental issues will be imperative to avoid and mitigate issues. This will be largely achieved through training and awareness, though regular updates may be required.

8.9.4 Media

Although not a stakeholder with high influence or interest in the Project, local and national media including print and on-line newspapers and radio/television broadcasters have the ability to reach many people. The media will be a useful tool in widely disseminating Project information for the general public. It is also highly beneficial in maintaining awareness of the Project and projecting a positive corporate image.

9. STAKEHOLDER MAPPING

9.1 METHODOLOGY

Stakeholder mapping is supported by a process of research, analysis and discussion drawing from multiple perspectives to determine a key list of stakeholders across the entire stakeholder spectrum.

Mapping realized for the GAC project can be broken down into four phases:

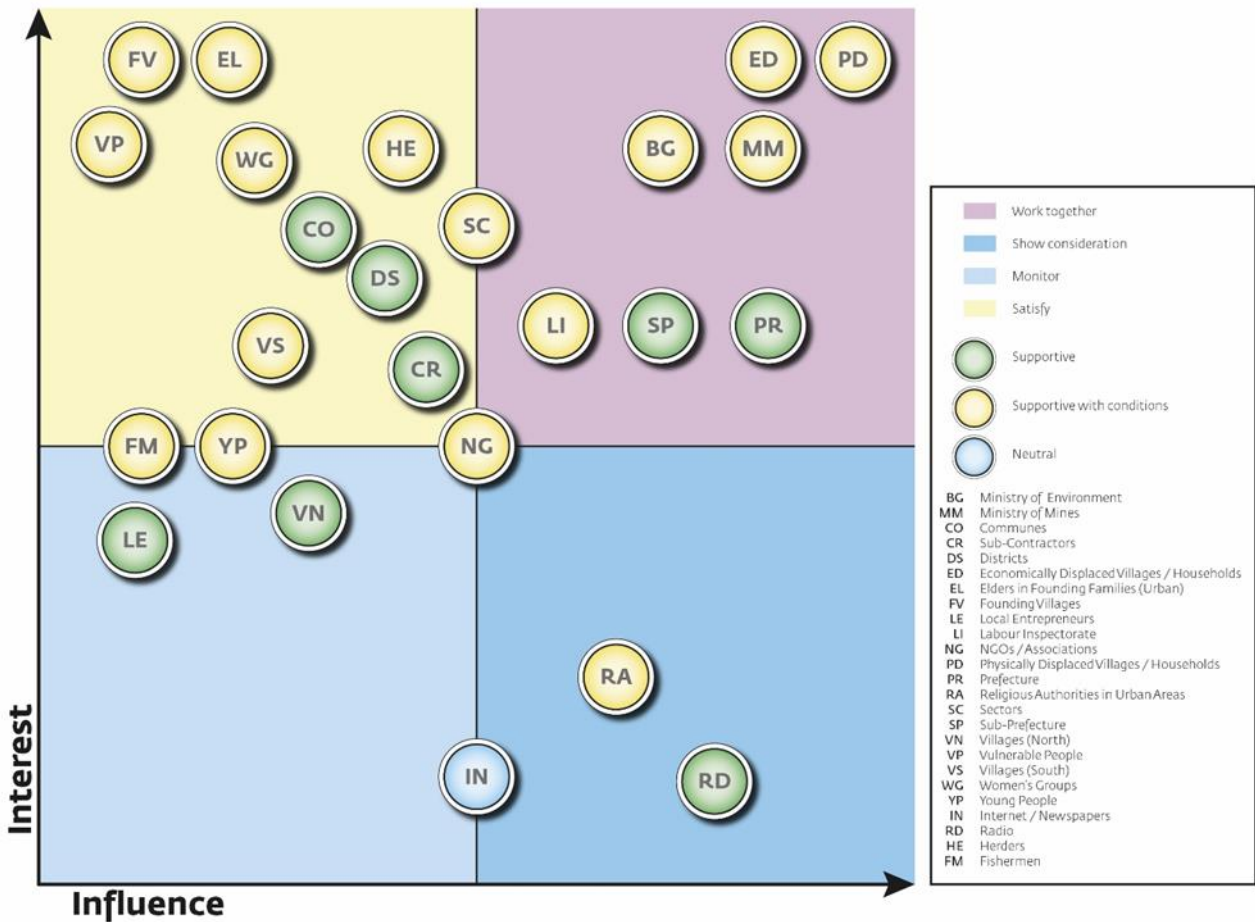
1. Identifying: listing relevant groups, organizations, and people (see Section 8)
2. Analyzing: understanding stakeholder perspectives and interests (see Section 8)
3. Mapping: visualizing relationships to objectives and other stakeholders (see Figure 9.1)
4. Prioritizing: ranking stakeholder relevance and identifying issues (see Figure 9.1)

In the process of mapping, a useful exercise is to graphically illustrate the position of each group of stakeholders with regards to its influence on the Project (i.e. to what extent the stakeholder group may contribute to shaping the Project and its implementation) and its interest in the Project (i.e. to what extent the Stakeholder has expressed an interest in the Project being developed).

9.2 OVERVIEW RESULTS

The figure hereafter shows the general results of this mapping process for the GAC Project. It represents all persons, groups of persons and institutions in Guinea that can interact with the Project, according to their level of interest in the project, their influence and support. Through the development of the specific SEP (Communaute, RAP etc...), those identified group of stakeholders are analysed in more details, specific engagement activities are planned accordingly.

Figure 9.1 General Stakeholders mapping for the GAC Project



9.3 ENGAGEMENT METHODS

In general, engagement is directly proportional to impact and influence, and as the extent of impact of a project on a stakeholder group increases, or the extent of influence of a particular stakeholder on a project increases, engagement with that particular stakeholder group should intensify and deepen in terms of the frequency and the intensity of the engagement method used.

All engagement should proceed on the basis of what are culturally acceptable and appropriate methods for each of the different stakeholder groups. For example, when consulting government officials formal presentations are the preferred consultation method, while communities prefer public meetings, and informal focus group discussions facilitated by posters, non-technical pamphlets and other visual presentation aids including models and videos.

There is a variety of engagement methods used to build relationships with stakeholders, gather information from stakeholders, consult with stakeholders, and disseminate project information to stakeholders. When selecting an appropriate consultation method, culturally appropriate engagement, and the purpose for engaging with a stakeholder group should be considered. Table 9.1 provides a list of different engagement methods, and suggests the most appropriate application of these methods.

Table 9.1 Engagement Methods

Engagement Method	Most Appropriate Application of Method
Correspondence by email/letter	<ul style="list-style-type: none"> • Distribute project information to government officials, organisations, agencies and companies • Invite stakeholders to meetings
Print media / web media / social media	<ul style="list-style-type: none"> • Disseminate project information to large audiences, and literate stakeholders • Inform stakeholders about employment opportunities, grievance procedures, community development projects, and consultation meetings
Noticeboards	<ul style="list-style-type: none"> • Disseminate project information to large audiences, and literate stakeholders • Inform stakeholders about employment opportunities, community development projects, and consultation meetings
Community radio	<ul style="list-style-type: none"> • Disseminate project information to large audiences, and illiterate stakeholders • Inform stakeholders about project activities including community development projects and public consultation meetings • Solicit views, opinions and grievances
One-on-one interviews	<ul style="list-style-type: none"> • Solicit views and opinions • Enable stakeholders to speak freely and confidentially about controversial and sensitive issues • Build personal relations with stakeholders • Recording of interviews
Formal meetings	<ul style="list-style-type: none"> • Present project information to a group of stakeholders • Allow the group of stakeholders to provide their views and opinions • Build impersonal relations with high level stakeholders • Distribute technical documents • Facilitate meetings using PowerPoint presentations • Record discussions, comments/questions raised and responses
Public meetings / forums	<ul style="list-style-type: none"> • Present project information to a large audience of stakeholders, and in particular communities • Allow stakeholders to provide their views and opinions • Build relationships with neighbouring communities • Distribute non-technical project information • Facilitate meetings using PowerPoint presentations, posters, models, videos and pamphlets or project information documents, depending on the audience • Record discussions, comments/questions raised and responses

Engagement Method	Most Appropriate Application of Method
Workshops	<ul style="list-style-type: none"> • Present project information to a group of stakeholders • Allow the group of stakeholders to provide their views and opinions • Use participatory exercises to facilitate group discussions, brainstorm issues, analyse information, and develop recommendations and strategies • Recording of responses
Focus group meetings	<ul style="list-style-type: none"> • Allow a smaller group of between 8 and 15 people to provide their views and opinions of targeted baseline information • Build relationships with neighbouring communities • Use a focus group interview guideline to facilitate discussions • Record responses
Surveys	<ul style="list-style-type: none"> • Gather opinions and views from individual stakeholders • Gather baseline data • Record data • Develop a baseline database for monitoring impacts

10. STAKEHOLDER ENGAGEMENT PROGRAMME

The objectives of GAC's Stakeholder Engagement Plan are described in Section 3.1. The following stakeholder engagement programme will aim to achieve this. It is important to recognise that as the Project moves from one phase to the next (e.g. construction, operations, closure, rehabilitation), the stakeholder analysis will need to be revisited and the programme adjusted to meet the specific requirements of the various phases. There is also a need to monitor the effectiveness of stakeholder engagement and adapt the programme to ensure that the desired outcomes are achieved, namely, maintaining a "social licence" to operate through the development of mutual trust, respect and transparent communication between GAC and its stakeholders.

10.1 BOREALIS INFORMATION SYSTEM

GAC uses a proprietary software package called Borealis for managing community engagement. All stakeholder engagement activities described in this SEP will be captured in Borealis. The system allows GAC to plan and monitor engagement activities, register stakeholders, manage grievances and commitments and track consultations.

10.2 STAKEHOLDER ENGAGEMENT MATRIX

The level of interest and influence of each stakeholder has been considered by GAC's Community management. The results are presented in section 9 above.

10.3 STAKEHOLDER ENGAGEMENT PROGRAMME DETAILS

APPENDIX 1 presents the stakeholder engagement activities planned for the pre-construction and early works phase of the project. The stakeholder engagement analysis will be reviewed after financial notice to proceed and before full construction begins, and again prior to the operations phase. The activities presented will be updated accordingly. All activities presented in APPENDIX 1 will be captured, planned, managed and recorded in Borealis.

11. TIMETABLE

Full disclosure to the lenders consortium of all key social and environmental documents is scheduled for 2017. Initial consultations with key stakeholders were initiated throughout the Social Baseline Study and the Social and Environmental Impact Assessment. A summary of these is included below. APPENDIX 1 provides the Program of the key engagement activities by group of stakeholders and frequency of engagement.

11.1 SEIA ADDENDUM CONSULTATIONS

Scoping phase: July-August 2014

- Formal recruitment of surveyors from local community through GAC's local employment procedure to support the GAC-Consultant team throughout SEIA study.
- Engagement with local authorities: district, commune, sub-prefecture, prefecture
- Engagement with BGEEE
- Engagement with village elders in preparation for subsequent consultations
- Engagement with key local civil society groups (women, youth in particular).

Baseline study phase: August 2014-December 2014

- Engagement with local authorities: district, commune, sub-prefecture, prefecture
- Engagement with village elders in preparation for subsequent consultations.
- Direct engagement with approximately 15% of households in the GAC concession (386 households) as part of quantitative socio-economic baseline survey.
- Direct engagement with community member and civil society groups as part of qualitative social baseline survey: cultural heritage, ecosystem services in particular.

Impact assessment phase: November 2014-April 2015

- Engagement with local authorities: district, commune, sub-prefecture, prefecture
- Engagement with village elders in preparation for subsequent consultations.
- Direct engagement with community member and civil society groups as part of qualitative social baseline survey: cultural heritage, ecosystem services in particular.
- Engagement with BGEEE

Public hearing at Sangarédi and Conakry (under supervision of BGEEE): January 2016

- Open "Town hall" meeting at Sangarédi presided by the Prefect of Boké, organised by BGEEE, involving representatives of all levels of local government (district, commune, sub-prefecture, prefecture), village elders, civil society groups, as well as individual participants. Minutes of meetings provided in APPENDIX 4

11.2 DAM SEIA CONSULTATIONS

Scoping / baseline phase: November 2015 and February 2016

- As for main SEIA update study, centred on villages in the area of influence of the dam project.

Impact assessment phase: February 2016.

- As part of the different surveys undertaken, stakeholders were informed on the project and the SEIA process while opinions on the project and its impacts were gathered to inform the impact assessment. When conducting the study, all the stakeholders and more specifically the populations in the 8 villages within the study area were widely sensitized to the SEIA activities to ensure:
 - good understanding of the overall SEIA process and objectives and methodology of the social baseline study;
 - easier access to the territory and information/data; and
 - as much information as possible could be gathered within a relatively short timeframe (12 days fieldwork)
- A total of 384 individuals were directly engaged in the development of Dam study, through one-on-one interviews and/or focus groups.

All relations with authorities and planned activities will be entered in Borealis database to ensure effective and timely execution. Borealis will also be used to capture the details of engagements (date, time, content, attendees/recipients). High level country wide relations with medias and Ministry will also be captured in Borealis database for timely action and engagement.

12. RESOURCES, RESPONSIBILITIES AND COORDINATION

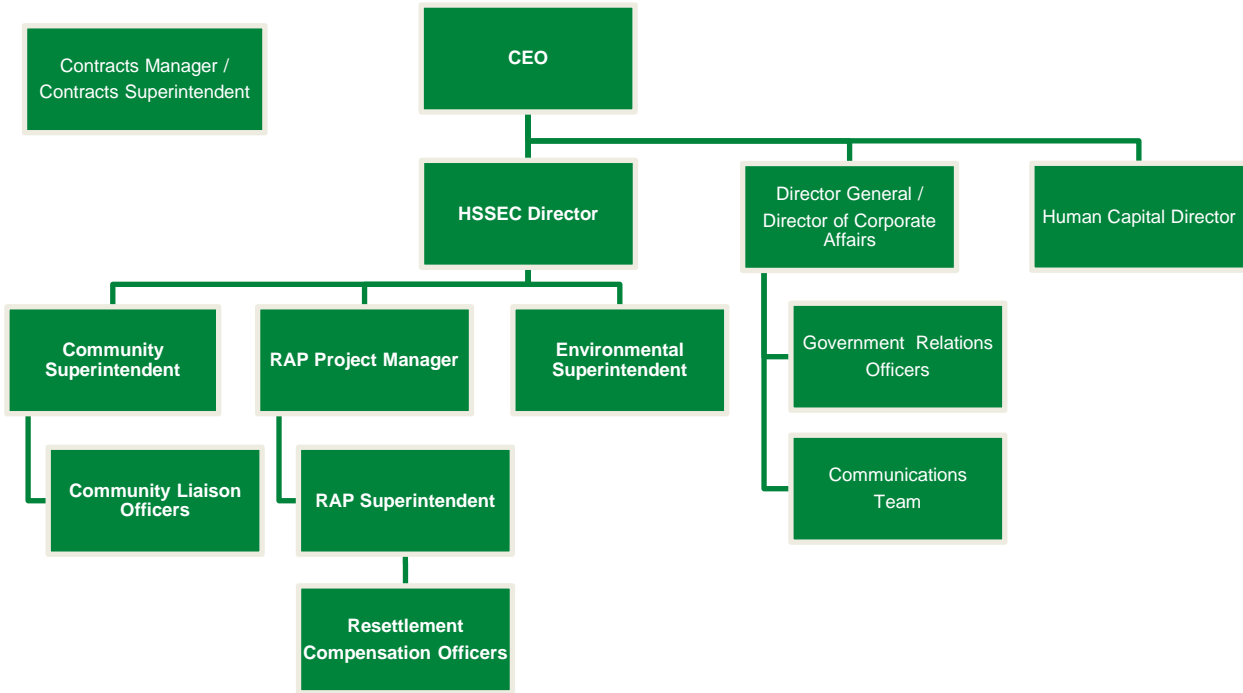
12.1 ORGANISATIONAL STRUCTURE

The GAC Organisation Structure, as it pertains to stakeholder engagement is presented in Figure 12.1. This is not the full organogram for GAC. The full organogram is maintained by the Human Capital Manager and is regularly updated (approximately every 6 months).

12.2 COORDINATION

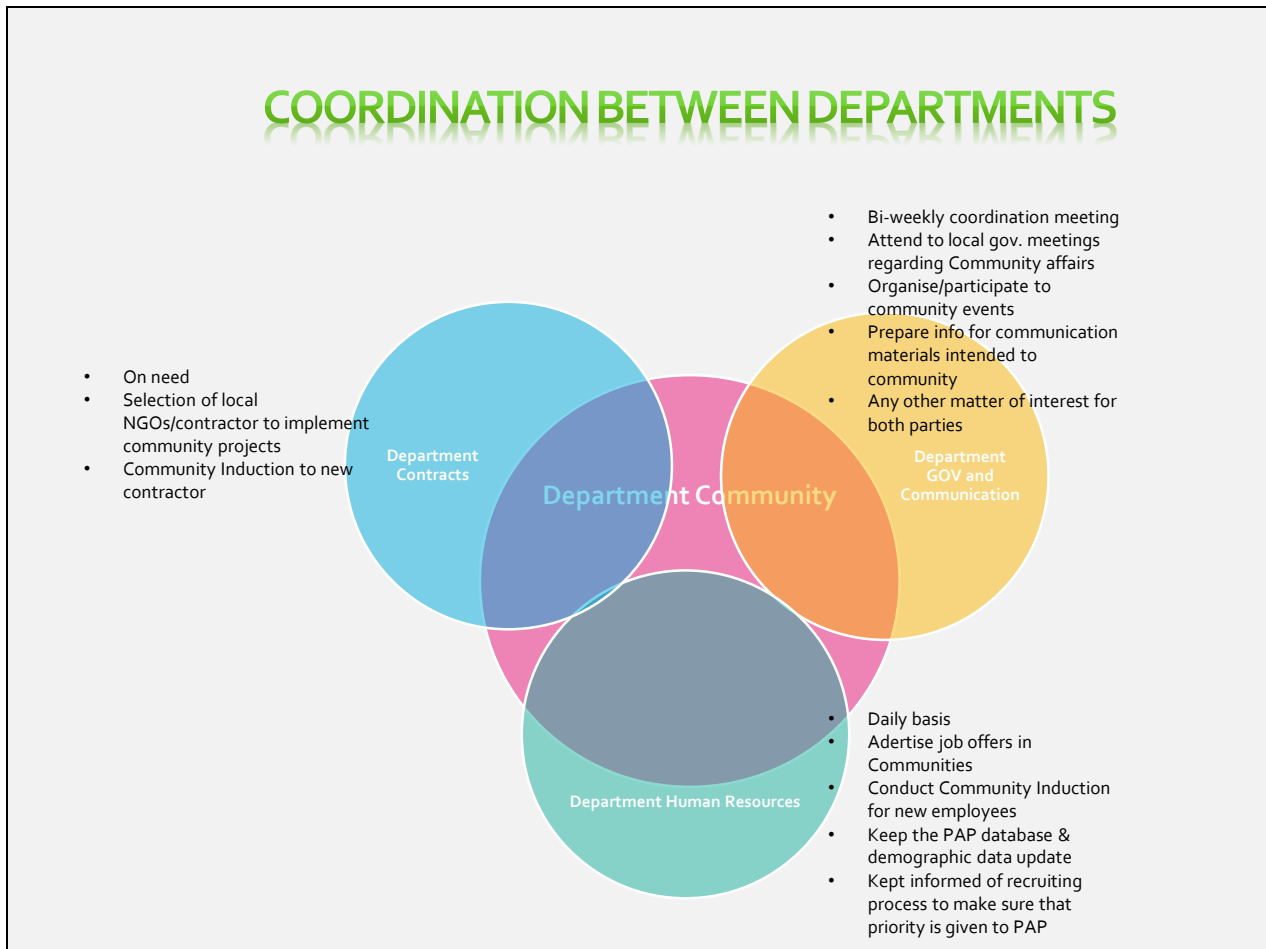
To ensure proper and timely engagements, various means of communications are put in place among departments. The system in place includes bi-weekly formal meetings and day to day interactions with employees of other department. The coordination structure is presented in Figure 12.2 below.

Figure 12.1 Stakeholder Engagement Reporting Structure



<p>Responsible for:</p> <ul style="list-style-type: none"> • Communities • Social NGOs • Commune Mayors • District President • Sector Chiefs • Founding Villages • Elders • Religious Authorities • Vulnerable • Women's Groups • Young 	<p>Responsible for RAP related engagement with:</p> <ul style="list-style-type: none"> • Affected Communities • Affected village/sector chiefs • Affected District Presidents • Resettlement committees 	<p>Responsible for environmental related engagement with:</p> <ul style="list-style-type: none"> • BGEEE • Environmental NGOs 	<p>Responsible for:</p> <ul style="list-style-type: none"> • MEEF • BGEEE • Prefecture/Prefect • Sous-préfecture/Sous-Prefect • Other ministries/national government bodies • Media/Social Media 	<p>Responsible for :</p> <ul style="list-style-type: none"> • Labour Inspectorate • Employee Representation
---	--	--	---	--

Figure 12.2 Coordination between GAC’s Departments



13. GRIEVANCE MECHANISM

GAC has a well-established grievance mechanism, as detailed in the GAC procedure ‘Managing Community Complaints’ (9000-C-CPD-00015). The scope of this document includes as ‘complainants’ “individuals and communities directly affected by the work of GAC or GAC contractors. It can also be any other GAC identified stakeholder in the SEP.” This procedure is aligned with the IFC Performance Standards and AfDB Operational Safeguards. All complaints are captured and tracked in the database management system (Borealis).

The mechanism is in place since 2006. As the Project evolves, new stakeholders are identified. Pamphlets that explain the procedure are distributed annually as “ a refresher” information mechanism. and information campaigns are programmed (SEP-Community) and disseminated among stakeholders.

The Perception survey covers the Grievance mechanism aspect. Questions around awareness/knowledge and appreciation on the mechanism are asked to the stakeholders. GAC is able to monitor are effectivtly the mechanism is, and is able to oriente the annual information activities accordingly.

All communication (complaints, ‘doleances”, concerns, suggestions, demands etc..) are recorded in the Borealis system enabling GAC to monitor and respond on a timely manner to the stakeholders. The information pamphlet is covering all external communication to GAC.

14. MONITORING AND REPORTING

14.1 MONITORING

GAC will maintain a database (Borealis) detailing all public consultation, engagement, disclosure information and grievances collected throughout the project. Such information will be available for stakeholder review upon request.

Stakeholder engagement will also be periodically and formally evaluated by senior management, led by the Director HSSEC and assisted by the Director General, GAC Communications/Government Relations team and the HSSEC leadership team. Such formal review shall be undertaken at least annually, and prior to a significant change in project phase (e.g. construction to operations).

14.2 REPORTING

Reports shall be generated by Borealis and other relevant data including the following:

14.3 MONTHLY REPORTS

A monthly dashboard report shall be published by the Community team with the following:

- Number of consultations with communities, monthly
- Number of visitors to the Project Information Centres, monthly;
- Number of grievances raised, monthly with a 12-month trending history;
- Unresolved grievances, monthly;
- Register of concerns, monthly with details; and
- Environmental Incidents reported

14.4 QUARTERLY REPORTS

A quarterly report shall be published by the Community team with input from the GAC Communication/Government Relations team with the following:

- Planned engagements planned versus actual engagements, quarterly;
- Number of visitors to the Project Information Centres, quarterly;
- Number of grievances raised, monthly with a 12-month trending history;
- Unresolved grievances, quarterly; and
- Register of concerns, quarterly with details.

14.5 ANNUAL REPORTS

An annual report shall be prepared and presented by the Communications/Government Relations team to GAC Executive Management Committee and the GAC Board in high level dashboard format, with supporting details. The format of the detailed report shall be submitted to the Lenders consortium for review.

14.6 COMMUNITY SURVEY

At every two years, the Community Department shall conduct a perception survey in the local communities (concession villages and Kamsar urban communities) and among local authorities' representatives. This tool will be used to assess needs, answer questions, solve problems, establish baselines, analyze trends, and

select goals that will help to orientate the Community Investment Strategy and Implementation Plan. It is also a mean to get feedback on past/current social performance and to obtain information for future direction.

15. MANAGEMENT FUNCTIONS

15.1 MANAGEMENT RESPONSIBILITY

Management oversight of the Stakeholder Engagement Plan rests with the HSSEC Director. However much of the engagement with the national and regional government authorities will be managed through the Government Relations and Communications team, therefore the Director General also has an integral role.

15.2 STAFFING AND REPORTING LINES

Due to the long history of the GAC project, all of the necessary staff for stakeholder engagement are already part of the organisation and the staff planning. This includes the Government Relations team, the Communication team, the Community team and Compensation/Resettlement team. Specific stakeholder engagement activities as described in this SEP are also undertaken by the HR Director, the Contracts Superintendent and the Environmental Superintendent. Figure 12.1 describes the organisational structure and staffing to support stakeholder engagement activities. Through regular monitoring of stakeholder engagement as described in Section 14, staffing will be adjusted to ensure that stakeholder engagement is effective and timely.

15.3 EXTERNAL COMMUNICATION OF STAKEHOLDER ENGAGEMENT

15.4 ROLE OF THE COMMUNITY DEPARTMENT

The Community Department is primarily responsible for the continuous and systematic engagement with relevant stakeholders and communities. Annually, the Community Department is updating the “Plan de dialogue avec les parties prenantes-Communautes”. The annual plan reflects the engagements activities that are needed to be implemented based of Project planning and internal analysis of stakeholders feedbacks. As the Project evolves, it happens that hadoc specific engagement activities have to be integrated. As such, the annual plan is a living document.

15.5 ROLE OF THE GOVERNMENT RELATIONS FUNCTION/COMMUNICATIONS

Within the Organisation Chart, the Government Relations function sites under “Corporate”. They are two levels of government relations: National Level and Regional Level. The National Level is leaded by the Direction Nationale and its team in the capital of the Guinea. The primarily responsibility of the first level is to engage with high level government bodies in the capital and lead the communication team in order to dessiminate information related to Project evolution. The second level works closely with the Community Department in engagement with the Regional authorities in the Boke Prefecture.

15.6 INTERNAL COMMUNICATION OF STAKEHOLDER ENGAGEMENT

The Community Superintendent, with assistance from the Communications, Government Relations and Resettlement teams, is responsible for preparing the necessary training material to allow the Human Resources training team to deliver the necessary information to all project personnel (GAC and contractors).

15.7 CONTRACTORS

As described in Section 8.9.3, all contractor personnel will be provided awareness training, including cultural awareness training for expatriates. This will be delivered through the project general induction on commencing employment on the project.

Contractor organisations will also be provided with (as part of the exhibits to the contract):

- the GAC and EGA Code of Conduct;
- the Supplier Code of Conduct;
- the Local Hiring Procedure (giving preference to communities affected by the project activities);
- where appropriate, the project Industrial Relations Policy and Management Plan; and
- GAC health, safety and environmental policies and procedures.

The contract end-user will be responsible for ensuring the contractors understanding of the aforementioned requirements and for monitoring their compliance. When uncertain, the contract end-user shall consult with the appropriate responsible person within GAC (e.g. Community Superintendent, Environmental Superintendent, Government Relations Officer, HSSEC Director or Human Capital Director).

In general, contractors will be discouraged from direct engagement with the local communities and government agencies. All communication, with the exception of that required for recruitment will be through the appropriate GAC representative.

Appendix 1. STAKEHOLDER ENGAGEMENT PROGRAMME

Stakeholder	Main contacts	Preferred engagement method	Frequency	Action / (Responsibility)
Government				
Ministre de l'Environnement, Eaux et des Forêts (MEEF)	Direction of BGEED	<ul style="list-style-type: none"> Formal meetings organised regularly and exceptionally when necessary 	<ul style="list-style-type: none"> Every 6 months 	Implement consultation programme with GAC Government Relations team (Gen Manager)
Ministre des Mines	Direction of Mine	<ul style="list-style-type: none"> Formal meetings organised regularly and exceptionally when necessary 	<ul style="list-style-type: none"> Every 6 months 	Implement consultation programme with GAC Government Relations team (Gen Manager)
Prefecture	Prefect and Local Authorities' Secretary General, technical services and CPD (Boké)	<ul style="list-style-type: none"> One-on-one interviews Public forums 	<ul style="list-style-type: none"> Quarterly Disclosure 	Develop a framework for consultation (agenda, terms, topics, followed by measures adopted) (HSSEC Manager)
Labour Inspectorate (Kamsar & Sangarédi)	Labour Inspectors in Kamsar & Sangarédi (Sub-prefectoral level)	<ul style="list-style-type: none"> One-on-one interviews/meetings Public forums regarding the recruitment process (GAC and contractors) 	<ul style="list-style-type: none"> As needed Disclosure 	Establish policy and procedure for hiring on the GAC project (HR Manager)

Stakeholder	Main contacts	Preferred engagement method	Frequency	Action / (Responsibility)
Sub-prefectures	Sub-Prefects	<ul style="list-style-type: none"> One-on-one interviews Public forums 	<ul style="list-style-type: none"> Regularly (as needed) during construction, minimum quarterly Disclosure 	Develop a framework for consultation (agenda, terms, topics, followed by measures adopted) (General manager through Government Liaison Officer)
Communes	Mayors and Commune Councils	<ul style="list-style-type: none"> One-on-one interviews Public forums 	<ul style="list-style-type: none"> Regularly (as needed) during construction, minimum quarterly Disclosure 	Create inter-communal committees (Boké, Sangarédi, Kamsar) to act as focal points for stakeholder communication and consultation (Communication Superintendent)

Stakeholder	Main contacts	Preferred engagement method	Frequency	Action / (Responsibility)
Districts	Presidents and committee members	<ul style="list-style-type: none"> • One-on-one interviews with District Presidents • Committee meetings • Public forums 	<ul style="list-style-type: none"> • Regularly (as needed) during construction, minimum quarterly • Disclosure 	<p>Introduce GAC teams to all districts affected by the Project (prioritising districts in the concession area) by organising introductory and follow-up meetings with village authorities & village elders across the Project area (with a focus on the southern part of the concession, which has been, much less proactively consulted than villages in the northern part of the concession over the past 10 years.</p> <p>Advertise the creation of inter-communal committees to district-level authorities to allow for district representatives to report to inter-communal committees.</p> <p>(Communication Superintendent)</p>
Sectors	Sector Chiefs and committee members	<ul style="list-style-type: none"> • One-on-one interviews with Sector Chiefs • Committee meetings • Public forums 	<ul style="list-style-type: none"> • Regularly during preparation phase, construction and quarterly and as needed • Disclosure 	<p>Organize a formal consultation framework between districts and member to ensure the transmission of information at the local level</p> <p>(Communication Superintendent)</p>

Stakeholder	Main contacts	Preferred engagement method	Frequency	Action / (Responsibility)
Founding Villages	Representatives of founding families, elders, religious authorities, natural leaders	<ul style="list-style-type: none"> Formal focus groups 	<ul style="list-style-type: none"> As needed during preparation phase, construction and then quarterly 	Visit regularly the founding villages to make sure that their information level is sufficient and to take their suggestion into account (Communication Superintendent)
Villages in the South of the Concession Area	Representatives of founding families, elders, religious authorities, natural leaders	<ul style="list-style-type: none"> Distribution of the Community Information Bulletin Village level consultation 	<ul style="list-style-type: none"> Regularly during preparation phase, construction and quarterly and as needed Disclosure 	GAC teams to visit all villages that may be affected by the bauxite export Project in order to introduce itself as “new occupant” of the land. GAC team will multiply contacts with villages located south of the concession (courtesy visit, information, consultation). (Communication Superintendent)
Villages in the North of the Concession Area (20 villages)	Representatives of founding families, elders, religious authorities, natural leaders	<ul style="list-style-type: none"> Distribution of the Community Information Bulletin Village level consultation and disclosure 	<ul style="list-style-type: none"> Quarterly during preparation phase, construction and as needed Disclosure 	Develop a communication plan for villages in the north of the concession area explaining the "expansion of the GAC project" towards the south of the concession area and its impacts for the village in the north (Communication Superintendent)

Stakeholder	Main contacts	Preferred engagement method	Frequency	Action / (Responsibility)
Affected villages/households	Resettlement Consultation Committees / Villagers	<ul style="list-style-type: none"> Committee meetings Public forums Surveys 	<ul style="list-style-type: none"> Monthly during consultations, prior to relocation. Quarterly for 2 years after relocation, or until close out. 	<p>Information and consultation committees.</p> <p>Regular monitoring per Resettlement Action Plan specific SEP's.</p> <p>(RAP Superintendent)</p>
Affected villages, other concession villages and Kamsar general population	All members of communities	<ul style="list-style-type: none"> Establishment of <i>Project Information Centres</i> Perception Survey 	<ul style="list-style-type: none"> Centres to be regularly manned, at least 20 hours per week Annual Perception Survey 	<p>Establish centres in Kamsar and on concession (GAC Community House near Pioneer Camp). Implement manning roster.</p> <p>Perception Survey.</p> <p>(Communication Superintendent)</p>
Elders in Founding families in Urban Areas	Committee of Elders	<ul style="list-style-type: none"> Focus groups 	<ul style="list-style-type: none"> As needed 	<p>Information and consultation committees</p> <p>(Communication Superintendent)</p>
Religious Authorities in Urban Areas	Islamic League Councils, representatives of the Catholic Church	<ul style="list-style-type: none"> Focus groups 	<ul style="list-style-type: none"> As needed 	<p>Information and consultation committees</p> <p>(Communication Superintendent)</p>

Stakeholder	Main contacts	Preferred engagement method	Frequency	Action / (Responsibility)
NGOs/Associations	Civil Society Representative for the Sub-Prefecture, Association Directors	<ul style="list-style-type: none"> Focus groups 	<ul style="list-style-type: none"> As needed 	<p>Consider sub-contracting to certain local NGOs and involving them in community projects in the project area</p> <p>Recognize the existence of inter-village organizations (local civil society) that could be created in the project area and recognize them as interlocutors if they are recognized by the local authorities.</p> <p>(Communication Superintendent)</p>
Women's Groups	Women's representative in the Sub-Prefectures	<ul style="list-style-type: none"> Focus groups 	<ul style="list-style-type: none"> As needed 	<p>Consider funding certain women's groups' activities in rural and urban areas</p> <p>(Communication Superintendent)</p>
Young People	Sub-Prefectural Youth Associations	<ul style="list-style-type: none"> Focus groups 	<ul style="list-style-type: none"> As needed 	<p>Organise regular consultation and information-sharing meetings with youth representatives</p> <p>(Communication Superintendent)</p>

Stakeholder	Main contacts	Preferred engagement method	Frequency	Action / (Responsibility)
Local Entrepreneurs	Directors of the companies concerned, Sub-Prefectural Craft Trade Organisations	<ul style="list-style-type: none"> Email 	<ul style="list-style-type: none"> As needed 	Anticipate the adoption of more stringent Health & Safety standards by informing local GAC sub-contractors to ensure they remain eligible for certain contracts with GAC (Contracts Superintendent)
Contractors	Directors of the companies concerned/Employee Representation	<ul style="list-style-type: none"> Email 	<ul style="list-style-type: none"> As needed 	Impose Code of Conduct standards towards communities (signed in contracts), induction to employees, the prioritising Affected Community policy, Health & Safety standards, etc. and regularly monitor their implementation in the field, implement corrective actions if necessary. (Contracts Superintendent – Companies) (HC Manager – Employee Representation) (Contract End User – All)
Employee Representation	Personnel representatives Health and safety committee	<ul style="list-style-type: none"> Formal meetings 	<ul style="list-style-type: none"> Periodically as per labour regulations (at a minimum) – 	As above Also ensure that GAC internal policies are effectively implemented including non

Stakeholder	Main contacts	Preferred engagement method	Frequency	Action / (Responsibility)
			ideally every 3 months.	discrimination & equal opportunity, anti-bribery; working age. Ensure that appropriate labour conditions are provided at GAC workplace. Discuss concerns & expectations / discuss a process to address and solve conflict if any
Herders	Herders Association represented by: President Prefectural President Sous-prefecture de Tanéné President Sous-prefecture de Sangarédi	Association meetings	As needed	Organise regular consultation and information-sharing meetings with Herdersmen representatives as the Project Activities evolves. (Community Relations Supervisor))
Media	Representatives of the main media organisations	<ul style="list-style-type: none"> Press release 	<ul style="list-style-type: none"> Regularly during preparation phase, construction and quarterly and as needed Disclosure 	Communication plan with local, regional and national media (General Manager through Communication teams)
Lenders	Lenders' Consortium Representative	<ul style="list-style-type: none"> Annual report of stakeholder activities (See Section 14.5) 	<ul style="list-style-type: none"> Annually (may include request for 	Prepare format for review and endorsement.

Stakeholder	Main contacts	Preferred engagement method	Frequency	Action / (Responsibility)
			quarterly or monthly reports as well).	Prepare reports annually and as requested. (General Manager through Communication teams)
Internal stakeholders	GAC Community, Communication, Government Relations personnel All project personnel	<ul style="list-style-type: none"> • Specific training and awareness of SEP and inclusion in KPIs and performance reviews • General awareness training 	<ul style="list-style-type: none"> • Prior to construction, semi-annual performance reviews, change in project phase. • General Induction and refreshed every two years 	Prepare training and awareness packages (Communication Superintendent) Deliver training (Human Resources Director) Performance reviews (Team Leaders)
Fishermen through Management Committee of fishing facilities	Community Relation Officer (s) and RAP Unit Team	<ul style="list-style-type: none"> • Formal meeting • Consult through Perception Surveys 	<ul style="list-style-type: none"> • As the Project activities evolves • Every 2-years for perception survey 	Organise regular consultation and information-sharing meetings with fishermen committees (Community relations Supervisor)

Appendix 2. LIST OF ASSOCIATIONS/NGOS AND COMPANIES IN THE PROJECT AREA

Name	Active	Area of activity	Town	Contact details
SANGARÉDI				
NGO				
INAASPO	X	Vulnerable people / health	Sangarédi	Houdy Bah 664 06 06 56
CONAG	X	Guinean national coalition for women rights and citizenship	Sangarédi	Feminine promotion Miss Aïssata Traoré 631 832 786
WCF (Wild Chimpanzee Foundation)	X	Environment	Sangarédi	Virginie Vergnes Directrice par intérim of the Guinean representation 623 61 63 70
CADES GUINEE	X		Sangarédi	666 33 00 37
CAD		Support centre for development	Sangarédi	Kourouma
AJACIE	X		Sangarédi	Diakité 622 18 88 04
PSI	X	Awareness raising on HIV/AIDS and prostitution	Occasional interventions	No local points of contact
AIDE ET ACTION	X	School construction	Occasional interventions	No local points of contact
CECIDE	X	Human rights (CBG collaboration)	Sangarédi	Mamadou Houdiba 622 17 72 85
UNCEF through CPE (children centre)	X	Children protection	Occasional interventions	Eladj Aboubacar Fofana 620 47 77 42
SAVE THE CHILDREN	X	Children protection	Occasional interventions	No local points of contact
ADIS (association for the integrated development of Sangarédi)	X	Development and awareness raising on mine sector training	Sangarédi	Souleymane Bah 666 68 02 77
FENTEDJI	X	Public sanitation	Sangarédi	Hawa Camara 631 83 33 05
ACOSOF Guinée	X	Support to vulnerable groups	Sangarédi	Joseph Pepe Tohonamou 666 08 69 68
Guinée Challenge	X	Support to vulnerable groups – Installation of school libraries	Sangarédi	Aguibou Barry 621 91 68 68

Name	Active	Area of activity	Town	Contact details
ABDC Centre ABDC Nord ABDC Sud (association for the development of de Bowé centre)	X	Construction of health centres, schools, community development in collaboration with GAC	Mobhi	Amadou Oury Diallo 620 18 80 65 Baïlo Diallo Mouminy Bah
Croix Rouge (Red Cross)	X	Health – Urgence care	Sangarédi	Nestor Leno 628 68 22 27
ASSOCIATIONS				
AGPS (Guinean association of health professionals)	X	Health care	Occasionally with Sangarédi's Health Centre	No local points of contact
ADD (association for sustainable development)	X	Environment and socio-economic activities	Sangarédi	Mamadou Saliou Baldé 622 78 9015
SPF	X	Multisectorial development	Sangarédi	Morlaye Soumah 628 10 84 43
OJPURSS	X	Exchange and support with youth	Sangarédi	Diallo Moustafa Mamadou 628 05 77 60
UJESC	X	Environment and development	Sangarédi	Ibrahima Sadou Diallo 622 73 14 30
AJUDHD	X	Multisectorial	Sangarédi	Amadou Bella Diallo 666 08 69 68
AVDG (association of volunteers for the development of Guinea)	X	Environmental protection and farming	Sangarédi	Amadou Diouldé Diallo 623 16 72 13
Mow Sanga City (youth association for the movement of Sangarédi town)	X	Leisure, sport and project setting	Sangarédi	Mamadou Alliou Baldé 622 99 53 91
ASDS (association of welders)	X	Welders, professional association	Sangarédi	Moustafa Barry 622 80 02 98
AJDH	X	Youth association for the development of Hamdalaye	Sangarédi	Salloui Sadio Bah 666 27 09 27
AAS	X	Association of Sangarédi artists - Arts and culture	Sangarédi	Mahomed Diabaté 628 32 58 88
AJDD	X	Youth association for sustainable development. Environnement/ Conflicts prevention	Sangarédi	Fidèle Yombouno 631 83 33 90

Name	Active	Area of activity	Town	Contact details
ADAPEG	X	Association for agropastoral development	Sangarédi	Mohamed Bangoura 631 24 61 30
AJS	X	Youth association of Sangarédi (support to illiterate women's spousal life)	Sangarédi	Jean Keletigui Camara 666 89 28 40
Association of herders	X	Herders passing through the area	Sangarédi Tanéné	Mamadou Oury Diallo 621 17 98 40 Amadou Diallo 623271222 Mamadou Aliou Tela 621-91-7049
PRIVATE COMPANIES				
TOMBA	X	Security	Sangarédi	Kaman Souomou 622 16 31 71
Laguipress	X	Security	Sangarédi	Alexandre Dartigalongue 621 88 63 00
BCEIP	X	Security (training)	Sangarédi	Moussa Gadiri Soumah 631 35 03 88
BECOP	X	Security (training)	Sangarédi	Mamadou Aliou Bobo Bah 622 30 50 30
EGB	X	Security	Sangarédi	Mamadi Kaba 628 06 25 67
MES	X	Mechanic contractor (CBG)	Sangarédi	
ESS	X	Mechanical contractor (CBG)	Sangarédi	
NitroKemine	X	Mining contractor (CBG)	Sangarédi	
Toumnyne	X	Mining contractor (CBG)	Sangarédi	
Géoprospect	X	Mining contractor (CBG)	Sangarédi	See CBG
Total	X	Fuel	Sangarédi	Nassirou Sow 628 68 69 14
ICC	X	Fuel	Sangarédi	See CBG
BMSC	X	Fuel	Sangarédi	See CBG
BNT	X	Fuel	Sangarédi	Fatoumata Diakité 662 96 09 88
TMI	X	Fuel	Sangarédi	Daouda Barry 622 50 12 41

Name	Active	Area of activity	Town	Contact details
Batipro	X	Construction contractor	Sangarédi	Amadou Oury Diallo 623 23 25 41
Félicio	X	Construction contractor	Sangarédi	Yokor Anany 628 64 50 60
Alpha BTP	X	Construction contractor	Sangarédi	Momentanément absent
Sorécom	X	Construction contractor	Sangarédi	Lansana Bangoura 655 36 27 45
Sorémine	X	Construction contractor	Sangarédi	Abdoul Karim Barry 631 73 16 73
EMAD	X	Construction contractor	Sangarédi	Abdoulaye Bah 657 31 88 47
EMD	X	Construction contractor	Sangarédi	Abdoulaye Thierno Bah 664 90 90 46
Socamess BTP	X	Construction contractor	Sangarédi	Ibrahima Diallo 622 18 42 21
Nimba Construction	X	Construction contractor	Sangarédi	Djiba Kamano 657 48 63 21
ECPF	X	Construction contractor	Sangarédi	Marcel Loi 666 18 33 74
COMAB	X	Construction contractor	Sangarédi	Soriba Koumbassa 657 77 36 01
ECOG		Construction contractor		Mamadou Sampou 623 19 29 46
GPS		Construction contractor		
ECOMO		Construction contractor		Touré Fodé Mory 628 43 45 00
ENKOCA		Construction contractor		Mamadou Saliou Camara 664 19 26 81
EGCRK-SARL		Construction contractor		Tamba David Leno 622 46 71 25
Employee Representations				
ONSL	X	National organization of free unions	Sangarédi (CBG)	See CBG
CNTG	X	National confederation of Guinean workers	Sangarédi (CBG)	See CBG
BOKE				

Name	Active	Area of activity	Town	Contact details
NGO				
CADI BOKE	X	Mediation/information/training	Boké	
AGUIFEDI	X	Guinean association of women for development	Boké	
FNUAP	X	United Nations fond for populations	Occasional interventions	
FIDA	X	International fond for agricultural development	Boké Collaboration with PADER programme	
CADES GUINEE	X	Training	Boké	
AIME (Mother child association)	X	Children education	Boké	
CNTG (National confederation of Guinean workers)	X	Employee Representation	Boké	
APES	X	Association for environment and health protection	Boké	
CEFACAM	X	Training and supervision Amie Camara	Boké	
COC-PAIX	X	Orientation circle for peace strengthening. Conflict mediation and resolution	Boké	
AJDD	X	Youth association for sustainable development	Boké	
GFFEB Association	X	Women association for sanitation of Boké	Boké	
CEO	X	Orientation and listening centre	Boké	
STOPPALU	X	USAID-financed programme	Boké	
Club des amis du Monde (Friends of the world Club)	X	Development NGO	Boké	

Appendix 3. HERDERS ENGAGEMENT PLAN

1. BACKGROUND INFORMATION

In the mine area, pastoralism is a traditional activity, and cattle breeding is widespread. According to the household surveys⁹, approximately 21% of households own cattle, including small owners who are not livestock breeders. Households own on average 5.5 cattle heads. It should be noted that more households own cattle in the Sangarédi Sub-Prefecture compared with those in the Tanéné Sub-Prefecture (41.2% against 11.3%) and their herds are also larger (9.7 against 3.3 heads). The Sangarédi Sub-Prefecture is mainly populated with Fula people who are traditionally involved in cattle breeding while few Landouma households are involved in this activity.

Only 16% of cattle-breeding households conduct this activity as their primary one.

The GAC concession offers good potential in terms of pastures and has become an area favored by transhumant herders. Livestock and pastures are present everywhere irrespective of the season. The Tinguilinta River is not an obstacle to transhumance. Herds cross it through the bridge between Doubhi and Tinguilinta.

Two types of transhumance may be observed:

- Short-distance transhumance consisting of moving village herds according to the growing season (to avoid large crops during rainy season and market gardening areas during the dry season). It takes place between neighboring village territories. For example, the pastures in Wossou or the area extending from Dogoyombe to Missidé Hore Wendou may be mentioned.
- Long-distance transhumance involves men with large herds, whether they come from the Concession or not. It takes place during the dry season. In the Concession, long-distance transhumance takes two forms. Some herdsmen may cover long distance (e.g. between the Télimélé and Boffa areas) and only cross the Concession. On the other hand, some others, often from neighboring regions, settle in the Concession throughout the rainy season. Although their presence is temporary, they come back every year. Six temporary settlements were geotagged in the Tanéné Sub-Prefecture. Conversely, some herdsmen from the Concession such as in Dogoyombe, leave the Concession to go to the south of the Boké Prefecture or toward Boffa.

During transhumance, small breeders (2 to 4 cattle heads) leave their animals to large breeders (for whom it is their primary activity) who will be in charge of the watching of graze. Small breeders may therefore dedicate themselves to their primary activity (farming mainly) and do not have to manage their animal.

During both short and long-distance movement of cattle, the cattle are systematically penned at night. Penning areas however differ depending on the time of year:

- Sedhougol during the dry season. Cattle are penned on n'dantari, wet bottom lands, usually close to watercourse; and

⁹ Source: SEIA 2015-Volume 2: Social Studies

- Roumougol during the rainy season. Since n'dantaris are too wet, cattle are penned on higher areas called doghol. A wood structure is generally built.

Irrespective of this, the penning area and settlement are always called wouro in Fula language. Before settling, non-natives turn to the officials of the villages owning the land to obtain their authorization.

Conflict between herdsman and farmers

Authorization to settle in an area is not subject to any compensation; however, it prevents potential conflicts with local farmers. For example, in the village of Pompo Missidé, herdsmen are no longer allowed to settle on the land, following many problems in the past and in order to protect their croplands and plantations.

There are indeed conflicts between farmers and herdsmen in the concession. They arise both during the dry season because of market gardening plots and during the rainy season regarding large annual crops. In most cases, when a crop is damaged by cattle, its owner must pay some significant fines. Given the regular lack of management committees in villages, conflicts are managed by local officials (heads of sectors, heads of districts and elders) or are referred to the department in charge of development issues at the Sub-Prefecture level when no agreement is reached. It should be noted that cattle theft is widespread in the area.

Breeders are responsible for caring for their animals since technical departments have not performed vaccination campaigns for several years now. When animals are sick, breeders treat them by buying in private veterinary clinics (in Boké or Conakry).

The inhabitants of locations of Bowal Danssouba and C. Abdoulaye (sector Kantomba, District N'Dahara) and C. Mouctar Diop (sector Damba Dian Centre, District Dambadian) are herdsmen who travel to better pasture land (in Kolaboui) during the dry season (from Nov-Dec to May-June).

GAC Community Team engaged with herdsmen during May-June 2016:

- ✓ Years ago a project financed by IFAD (UN organization for Investment in Agriculture), GAC worked with herders to create associations:
 - At the Prefectoral level: *Association des éleveurs de la Préfecture de Boké*
 - At the Sub-prefectoral Level: *Union de groupements des éleveurs*
 - At the District Level: *Groupement d'éleveurs*: Each sector has a representative in the district group.
- ✓ Responsibilities of the Prefectoral Association are:
 - Resolve conflicts between breeders and farmers
 - Handle the theft of livestock
 - Handle epidemic livestock disease
 - Establish corridors for the transhumance (for outsiders)
- ✓ The Sub-prefectoral Union and District Groups are not operational.
- ✓ It was possible to meet some of the herdsmen from the south-east concession. The majority of herdsmen are taking the cattle to the north part of the concession, or towards Boffa over the south

limit of the concession and to Sangarédi over the east limit of the concession. (see figure 7.2 in the main document)

- ✓ No herdsmen from the south-west concession attended our meeting. A normal situation since, the sub-prefecture of Tanéné is predominantly populated by Landouma people compared to the sub-prefecture of Sangarédi predominantly populated by Fula people, and the Landouma are mostly farmers, not herders.
- ✓ The Project development will focus on the south-west concession, therefore it's unlikely that herdsmen will be disturbed by the mining operations during the first time mining horizon of 5 – 7 years.
- ✓ A general agreement agreed by all attendees at the meeting is to keep informed the Prefectoral Association about the mining plan and discuss mitigation measures if any disturbance.

2. CONSULTATION PLANS

The following plans will be developed as often as necessary according to the mining schedule:

1. Consultation with herdsmen in the area to be affected by the Project activities
2. Consultation with the transhumand herders with the coordination of the Boke Prefectoral Association of Cattle Breeders.
3. Consultation with the Prefectoral Association to establish communications channels with the transhumance herdsmen.
4. Communication to Operations Department to ensure proper agreed measures are considered upfront before starting the activities.

3. MITIGATION OF ECONOMIC DISPLACEMENT IMPACTS ON HERDERS

Once the new location is finalized for the herders' plan:

- ✓ Infrastructure construction in the new area: roads, tracks;
- ✓ Work with a local NGO for establishing alternate water sheds/ pasture areas for water source & food supply for cattle;
- ✓ Covering any transaction cost associated with formal agreements for the new area suggested for herders;
- ✓ Look into opportunity to support animal husbandry improvements for the affected herders through technical assistance, through discussions with herders as part of the Agricultural Development Strategy.
- ✓ Follow instructions & guidance in IFC PS 5, AfDB OS 2, LACRF where applicable

5. DURING THE PROJECT LIFE

This SEP will evolve as the Project moves forward. Consultation and mitigation measures will be reviewed as often as necessary in order to respect this specific group of stakeholders.

Appendix 4. MINUTES OF MEETINGS: PUBLIC HEARING SEIA – ADDENDUM



AUDIENCE PUBLIQUE DU COMITE TECHNIQUE D'ANALYSE ENVIRONNEMENTALE (CTAE)

RÉPUBLIQUE DE GUINÉE

.....
Travail-Justice-Solidarité

PROCÈS-VERBAL DE DÉLIBÉRATION Session N°002/BGEEEE/EGA/GAC/Conakry du 11 février 2016

L'an deux mille seize et le 11 février, les membres du Comité Technique d'Analyse Environnementale se sont réunies à l'Hôtel Palm Camayenne de 09h00 à 16h00 sur invitation du Bureau Guinéen d'Etudes et d'Evaluation Environnementale (BGEEEE) du Ministère de l'Environnement, des Eaux et Forêts. La rencontre avait pour objet, l'examen et approbation du contenu du rapport de l'étude d'impact environnemental et social du projet d'exportation de bauxite par la société Emirates Global Aluminium (EGA/GAC).

La session de la présente audience du CTAE a été présidée par Monsieur Fassama KOUROUMA de la Direction Générale des Projets Miniers qui a ouvert la séance après la présentation du contexte du processus d'approbation des rapports d'EIES.

Le Représentant de la société EGA/GAC a fait un aperçu général sur le projet.

Les points techniques suivants étaient inscrits à l'ordre du jour :

1. Présentation de l'objet de l'Audience publique ;
2. Interventions des représentants de la société EGA/GAC ;
3. Lecture du Procès verbal de la consultation publique tenue à Sangarédi
4. Présentation du résumé des rapports d'EIES ;
5. Réponses aux questions, commentaires et discussions ;
6. Finalisation du Procès-verbal
7. Adoption du Procès-verbal et délibération ;

Étaient présents :***Pour le Ministère de l'Environnement des Eaux et Forêts (MEEF) :***

Les représentants de la Direction Générale du BGEEE, de la Direction Nationale des Eaux et Forêts, de la Direction Nationale de l'Environnement, du Centre de Protection du Milieu Marin et des Zones Côtières ;

Pour le Ministère des Mines et Géologie (MMG) :

Les représentants de la Direction Générale des Projets Miniers et de la Direction Nationale des Mines ;

Pour le Ministère de l'Administration du Territoire et de la Décentralisation (MATD) :

Le représentant de la Direction Nationale de l'Administration du Territoire,

Pour le Ministère de l'Enseignement Supérieur et de la Recherche Scientifique (MESRS) :

Les représentants du Centre d'Etude et de Recherche en Environnement (CERE) et du Centre de Recherche Scientifique Conakry Rogbané (CERESCOR) ;

Pour le Ministère de l'Elevage et des Productions Animales (MEPA) :

Le représentant de la Direction Nationale Alimentation Animale et Hydraulique Pastorale (AAHP).

Pour le Ministère de la Santé et de l'Hygiène Publique (MSHP) :

Le représentant de la Coordination des Etablissements Sanitaires, Industriels et Miniers (ESIM) ;

Le Ministère de la Ville et de l'Aménagement du Territoire (MVAT) :

Le représentant de la Direction Nationale de l'Aménagement du Territoire de l'Urbanisme ; des Voiries et Infrastructures (DATUVI) ;

Pour le Ministère des Travaux Publics (MTP) :

Le représentant de la Direction Nationale des Infrastructures ;

Pour le Ministère de l'Agriculture (MA) :

Le représentant du Bureau de Stratégie et de Développement ;

Pour le Ministère de la Pêche et de l'Economie Maritime (MPEM):

Le représentant du Centre National des Sciences Halieutiques de Boussoura (CNSHB).

Pour l'administration de EGA/GAC et le Cabinet ERM

Les représentants de la Société EGA/GAC, du Cabinet ERM/INSUCO et de l'ONG Guinée Ecologie.

Les principaux thèmes présentés par les Consultants ERM

La vue générale de la concession, les objectifs de l'addendum, les exigences des réglementations nationales et internationales en matière d'évaluation environnementale, la Consultation et études de terrain, la description du projet, le calendrier de production du gisement, le plan minier progressif étendu sur 20 ans, les infrastructures nécessaires à la mine, la configuration du projet au port, l'agencement des installations du port, l'élargissement du chenal existant, les aspects sociaux et sanitaires à savoir les opportunités socio-économiques, les emplois et les opportunités indirectes, l'utilisation des terres, les enjeux liés à la migration des populations, la santé et les infrastructures sanitaires, la sécurité et le patrimoine culturel.

Sur le plan environnemental, l'évitement des zones sensibles comme les galeries forestières, les eaux souterraines et des cours d'eau, la conservation de la biodiversité en général, la réduction des poussières, la modélisation du bruit et de la qualité de l'air, la réhabilitation progressive des zones dégradées par la construction des infrastructures et la modification des paysages, la gestion des déchets par le recyclage ou le traitement sécurisé et le plan de gestion environnementale et sociale.

Les principaux avis et préoccupations formulées par les membres du CTAE

La session, constatant que les préoccupations soulevées sur la question de la gestion des impacts environnementaux et sociaux ont été répondues avec satisfaction, a adopté les résolutions suivantes :

RÉSOLUTIONS

Sur la forme du document

Prendre en compte toutes les critiques et suggestions relatives à la forme du rapport notamment l'harmonisation des acronymes, des tableaux, des références des textes juridiques, des noms d'espèces identifiées puis la traduction de certains passages du document en langue française.

Sur la réglementation

Tenir compte dans le cadre juridique de la convention de Stockholm et de Rotterdam sur les produits chimiques, de la convention de Maputo sur la conservation de la nature adoptée le 20 novembre 2003 et du décret 201 portant sur la protection et préservation des milieux marins et zones côtières et.

Sur les impacts environnementaux

Déterminer suivant la monographie nationale, le niveau de la vulnérabilité des espèces menacées, inventoriées dans le rapport de l'EIES notamment les poissons et crustacés dans le tableau 6.49 (Vol 1) et préciser dans un tableau les noms vernaculaires et commerciaux des espèces inventoriées par l'étude.

Sur les impacts sociaux

Réaliser le Plan d'Action de Réinstallation et de Compensation (PARC) des personnes affectées par le projet et des biens expropriés.

Sur le PGES

Ressortir la responsabilité du BGEEE et le rôle du Comité Préfectoral de Suivi Environnemental et Social de Boké (CPSES) dans le processus du contrôle du suivi du PGES ; traiter dans le tableau consacré au PGES, une colonne intitulée **Moyens de vérification** ; proposer des mesures de compensation pour les impacts résiduels considérés majeurs ; traiter dans le PGES les autres phases du projet à savoir la pré construction et la fermeture du projet ; proposer un plan d'urgence pour les cas de pollution sur les sites du projet ; proposer les mesures de gestion et de suivi des ressources halieutiques à valeur de conservation.

Conclusion

Le Comité Technique d'Analyse Environnementale, après examen des documents soumis à son approbation, déclare adopter le rapport d'Etude d'impact environnemental et social du projet d'exportation de bauxite par la société EGA/GAC, sous réserve de la prise en compte effective des observations formulées.

Une commission restreinte placée sous la coordination du BGEEE s'assurera de l'intégration de ces observations dans le rapport final.



REPUBLICQUE DE GUINEE
Travail-Justice-Solidarité
MINISTÈRE DE L'ENVIRONNEMENT, DES EAUX ET FORÊTS
Bureau Guinéen d'Études et d'Évaluation Environnementale
DIRECTION GENERALE

BP : 761 CONAKRY E-mail : bgeenv@gmail.com

Fiche d'émargement des membres du CTAE pour l'examen et la validation de l'Étude d'Impact Environnemental et Social (EIES) du projet d'exploitation de bauxite dans la préfecture de Boké. (GAC)

No	Prénoms et Noms	Services invités	Statut au comité	Contacts	Emargement
1	Mme Hawa DIALLO	Conseillère juridique du Ministre de l'Environnement des eaux et Forêts	Présidente	628125297	P.O.
2	Fassama KOUROUMA	Direction Générale des mines et Géologie	1 ^{er} Assesseur	622251813	
3	Sekou CAMARA	Ministère Habitat et des villes (Coleah)	membre	664538571	
4*	Dr Seydou Bari SIDIBE	Direction Générale du BGEEE	Rapporteur		
5	Aliou CAMARA	D.N.E.F / MEEF	Membre		
6	Bangaly DIOUMESSY	D N de l'Environnement	Membre	62844025	
7	BGEEE	DEPMC-BGEEE	Membre	628718021	
8*	Sékou CAMARA	Centre de Recherche Halieutique de Bousoura	Membre		
9	BGEEE	DEPII/BGEEE	Membre	624333651	
10	BGEEE	DSERC/BGEEE	Membre	622388959	
11	BGEEE	DEPDR/BGEEE	Membre	628526398	
12*	BGEEE	Direction Générale/BGEEE	Membre	623448066	
13	Sékou Gaoussou SYLLA	BSP/MEEF	Membre	62869464	
14	DN des mines <i>Soubou Diatta</i>		Membre	62272222	

Ministère de l'Environnement Des Eaux et Forêts

REPUBLICQUE DE GUINEE
Travail-Justice-Solidarité
MINISTÈRE DE L'ENVIRONNEMENT, DES EAUX ET FORÊTS
Bureau Guinéen d'Études et d'Évaluation Environnementale
DIRECTION GENERALE

BP : 761 CONAKRY E-mail : bgeenv@gmail.com

15	Dr Mohamed CISSOKO	MSP/Cord Nie de la Santé dans les mines et industries	Membre	621206728	
16	Younoussa SOUMATE <i>Lansana Conde'</i>	Ministère de l'Agriculture	Membre	622903944	
17*	Lansana DIAWARA	DNI-Min Travaux Publics	Membre	-	
18	Lansana Kalas CAMARA	Direction Nationale de l'Alimentation Animale et de l'Hydraulique Pastorale	Membre	664583632	P.O. <i>Prof. Kalas</i>
19	Mamadou Bobo BAH	Ministère de l'Administration du Territoire	Membre	622343609	<i>Prof. BAH</i>
20*	Sékou DRAME	Direction Nationale de l'Hydraulique	Membre		
21*	DR Ibrahima BAYO	Centre Océanographique de Rogbanet	Membre	623058902	
22	Fatoumata Sombily DIALLO	CERE / UGANC	Membre	622363704	
23	THEOPHILE Richard	CPMZYC/MEEF	Membre	622692125	

Conakry, le 01 février 2016

Ministère de l'Environnement Des Eaux et Forêts



RÉPUBLIQUE DE GUINÉE

.....
Travail Justice Solidarité

**CONSULTATION PUBLIQUE
 DES COMMUNAUTÉS
 RIVERAINES DU PROJET
 D'EXPLOITATION DE BAUXITE
 DE GAC A SANGAREDI**

PROCÈS-VERBAL DE DÉLIBÉRATION
 Session N°002/BGEEE/EGA/GAC/SANGAREDI du 08 février 2016

L'an deux mille seize et le 08 février, les communautés riveraines du projet d'exportation de bauxite par la société EGA/GAC se sont réunies autour des autorités locales et préfectorales au Centre culturel de Sangarédi de 08h00 à 16h30 sur invitation du Bureau Guinéen d'Etudes et d'Evaluation Environnementale (BGEEE) du Ministère de l'Environnement, des Eaux et Forêts. La rencontre avait pour objet, la consultation des communautés riveraines aux sites d'extraction du gisement de bauxite en vue de recueillir leurs avis et préoccupations par rapport aux impacts environnementaux et sociaux identifiés par l'étude d'impact environnemental et social du projet.

La session de consultation publique a été présidée par le Préfet de Boké, Monsieur Mohamed Lamine DOUMBOUYA qui a ouvert la séance après la présentation de l'objet de la consultation publique faite par le Directeur Général du BGEEE, l'allocution de bienvenue de Monsieur le Maire de la Commune Rurale de Sangarédi et celle du représentant de GAC.

Les points techniques suivants étaient inscrits à l'ordre du jour :

1. Présentation de l'objet de la consultation publique ;
2. Présentation du résumé des rapports d'EIES ;
3. Interventions des représentants des communautés riveraines ;
4. Réponses aux préoccupations formulées par les communautés riveraines ;
5. Finalisation et adoption du Procès-verbal de la consultation publique.

Étaient présents :

Pour les collectivités locales et communautés riveraines

Les Maires, les Présidents de Districts, les Chefs secteurs, les représentants des jeunes et des femmes de Sangarédi et de Tanènè.

Pour l'administration préfectorale de Boké et des sous-préfectures de Sangarédi et de Tanènè

Les Directeurs préfectoraux en charge de l'environnement, des mines, de l'agriculture, de l'élevage, de la santé, de l'hydraulique, des affaires sociales, les représentants de la sécurité et de la presse.

Les Sous-préfets de Sangarédi et de Tanènè ainsi que les responsables des services techniques des deux Sous-préfectures.

Pour le Ministère de l'Environnement

Le Directeur général du Bureau Guinéen d'Etudes et d'Evaluation Environnementale et le Chef de département Evaluation des projets des Mines et Carrières dudit bureau.

Pour l'administration de EGA/GAC et le Cabinet ERM

Le Directeur Exécutif Environnement et Communauté EGA, le Responsable des Communautés EGA, le Directeur de l'étude/ERM et le Directeur INSUCO.

Les principaux thèmes présentés par les Consultants ERM

L'évolution du projet depuis 2004, la nouvelle configuration actuelle du projet, les raisons de la mise à jour des données techniques des études d'impact environnemental et social des différentes composantes du projet antérieurement approuvées, les inventaires de l'état initial de la biodiversité de la zone, les exigences des réglementations nationales et internationales en matière d'évaluation environnementale, le processus d'exportation du gisement de bauxite, le calendrier de production du gisement, les infrastructures nécessaires à la mine, les aspects sociaux et sanitaires à savoir les opportunités socio-économiques, les emplois et les opportunités indirectes, l'utilisation des terres, les enjeux liés à la migration des populations, la santé et les infrastructures sanitaires, la sécurité et le patrimoine culturel.

Sur le plan environnemental, les mesures prises concernent entre autres l'évitement des zones sensibles comme les galeries forestières, les eaux souterraines et des cours d'eau, la conservation de la biodiversité en général, la réduction des poussières, la réhabilitation progressive des zones dégradées par la construction des infrastructures et la modification des paysages, la gestion des déchets par le recyclage ou le traitement sécurisé et la réinstallation des populations déplacées.

Les principaux avis et préoccupations formulées par les communautés et responsables

La session, constatant que les préoccupations soulevées sur la question de la gestion des impacts environnementaux et sociaux ont été répondues avec satisfaction, a adopté les résolutions suivantes :

RÉSOLUTIONS

Sur les impacts environnementaux

L'utilisation des essences forestières locales dans le cadre de la réhabilitation des zones dégradées ; la protection des ressources naturelles ; se référer aux services techniques de l'Hydraulique pour l'utilisation des eaux dans la zone du projet.

Sur les impacts sociaux

La création d'emplois notamment pour les jeunes des localités impactés par le projet ; la protection des zones de pâturage ; l'appui à la construction d'un centre de formation ; la contribution de la société au développement du sport par l'aménagement d'infrastructures sportives en faveur de la jeunesse de la zone du projet ; la contribution aux projets retenus

dans les Plans Annuels d'Investissement (PAI) des localités concernées par le projet ; le respect de la législation nationale et internationale en matière d'environnement et de communautés, gage certain d'une cohabitation apaisée dans la zone du projet ; l'implication des communautés dans le processus de protection des sites culturels ; le paiement de toutes les taxes prévues par la législation guinéenne notamment le Code minier ; la construction de logements décents dans le cadre de la relocalisation des populations déplacées ; l'aménagement des terres cultivables en faveur des populations affectées par le projet ; l'élaboration d'une convention de base entre la société et les communautés aux fins de leur implication dans les prises de décision.

Le Président de la séance de Consultation publique, Monsieur le Secrétaire Général chargé des Collectivités Décentralisées a, au nom de Monsieur le Préfet de Boké, remercié les représentants des communautés venus des différentes localités riveraines, les délégués du Ministère de l'Environnement, des Eaux et Forêts, les responsables des différents services techniques de la préfecture et les responsables de EGA/GAC pour leur contribution à l'amélioration du rapport d'étude d'impact environnemental et social de cet important projet.

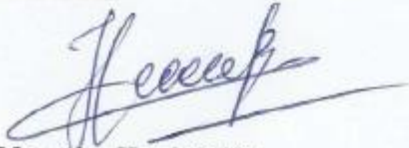
Au demeurant, Monsieur le Secrétaire Général chargé des Collectivités Décentralisées invite les responsables de EGA/GAC à tous les niveaux de prendre en compte toutes les observations et suggestions adoptées par la présente séance de consultation publique pendant la mise en œuvre des activités du projet.

Ont signé

Pour la Préfecture de Boké
Mr le Secrétaire Général chargé des
Collectivités Décentralisées

**Jean BEAVOGUI**

Pour la Commune Rurale de Sangaredi
Mr le Maire

**Mamadou Houdy BAH**

Pour la Commune Rurale de Tanènè
Mr le Maire

**Samba Oumar CAMARA**

Pour la Société EGA/GAC
Mr le Directeur Exécutif Environnement et
Communautés

**John FULTON**

Pour le Cabinet d'Etudes /ERM
Mr le Directeur des EIES

**Camille MACLET**

Pour le Ministère de l'Environnement, Eaux et Forêts
Le Directeur Général BGEEE/
Rapporteur

**Dr Seydou Bari SIDIBE**

CONSULTATION PUBLIQUE SUR L'EIES DU PROJET D'EXPORTATION DE BAUXITE EGA/GAC
SANGARÉDI, LE 8 FÉVRIER 2016

N°	Prénom et nom	Localité	Service	Fonction	Signature
1	Gana CAMARA	Sangarédi	Retraité	-	625763816
2	Fatou DIALLO	Sangarédi	Ménagère	Ménagère	628261766
3	Mamadou Lamarana BAH	Wassou	-	cultivateur	628628028
4	Alcény BAH	Wassou	-	cultivateur	622737714
5	Mamadou Sarigu BAH	Boulé	Président de club		625073342
6	Sulyman Coumba	Lavage		Musicien	620322869
7	Bamba Coumba	5 PDS		Ingénieur	622782639
8	Samba Kouadio Coumba	Thiakoumay		Président de club	621900226
9	Moustou BAH	Boulé		Chef secteur	620426359
10	Moussa Drey Diello	BAPAchépé		Président de club	623372204
11	Bah Mamadou Bahiou	Lavage		Coiffeur	621231014
12	Moussa Sidiou Diello	BAPAchépé		Chef secteur	620243351
13	Alcény Baingou	-11-		-11-	628050626
14	Abdou Hattimou BAH	Wassou		Journaliste	623921610
15	Mamadou Kouadio Diello	Boloungou		Vice-président	622782804

5

CONSULTATION PUBLIQUE SUR L'EIES DU PROJET D'EXPORTATION DE BAUXITE EGA/GAC
SANGARÉDI, LE 8 FÉVRIER 2016

N°	Prénom et nom	Localité	Service	Fonction	Signature
16	Moussa Lamine BAH	BAPAchépé		Chef secteur	621416192
17	Sulymane BAH	Lavage		chef -11-	628059079
18	Sulymane BAH	Wassou		ouvrier	622785510
19	Amadou Dey Diello	BAPAchépé		chef secteur	628709999
20	Moussa Kouadio Coumba	Sil'data		Humain	621917015
21	Alcény Diello	Lavage		Musicien	628100563
22	Fallé Kouadio Coumba	Lavage		Service privé	621404186
23	Yoro BAH	-11-		Éleveur	621817145
24	Mamadou Bahiou Diello	-11-		-11-	620895599
25	Hamadou BAH	BAPAchépé		retraité cba	622179631
26	Aboubakar Sane	Tamé		Président club	622082329
27	Sadio Diello	tingiluta		chef secteur	621713508
28	Abdoulaye Sane	Tamé		sous préfet	622171091
29	Aboubakar BAH	Boke		journaliste	624231496
30	Spirel Diello	Boke		-11-	622348835

**CONSULTATION PUBLIQUE SUR L'EIES DU PROJET D'EXPORTATION DE BAUXITE EGA/GAC
SANGARÉDI, LE 8 FÉVRIER 2016**

N°	Prénom et nom	Localité	Service	Fonction	Signature
46	Elhadj M ^{ou} Samba BAH	Lavage	Retraite	P. Soles Sgd	
47	Alpha Oumar BAH	Thiankounaye		Quartier	
48	Yaya Bangoura	bagga-segout	-	V/P Quartier	
49	Mohamed Lamine BAH	Bonkers	-	commerçant	
50	Aminata Diawara	Thiankounaye		coûtrice	
51	Binta BALDE	Hodina II	-	reçoivante	
52	Satata Diello	Wassou	-	commerçant	
53	Kozohima Diaby	Thiankounaye	-	Chauffeur	666 40 59 24 DW
54	Younoussa Diello	Aye-Koye	-	Agent commu- municipal	
55	Aïssatou Diello	Aye-Koye	-	Commerçante	625 09 96 42
56	Samba Oumar Camara	Tanana	CR	P. de la CR	620 90 91 20
57	Salifou Camara	N'dagara	district	P. du district	629 14 02 87
58	Hamadou BAH	Kintouou Dakouta	district	Président	623 17 20 59
59	Hamadou Kita	N'dagara	-	chef section	621 88 76 92
60	Hadja Aïssata TRAORE	Cité	CBE	directrice P. moton feminine	622 89 27 90

8

**CONSULTATION PUBLIQUE SUR L'EIES DU PROJET D'EXPORTATION DE BAUXITE EGA/GAC
SANGARÉDI, LE 8 FÉVRIER 2016**

N°	Prénom et nom	Localité	Service	Fonction	Signature
31	Harima Ball	Bagga-chegout		chef section	620 26 59 26
32	Alpha Diaby Barry	Balandafora		chef -II-	620 26 44 10
33	Hamadou Bobo Barry	-II-		membre	621 77 12 92
34	Youssef Kalion Diello	Lavage		membre	625 00 50 00
35	Thierno pathe Camara	Thiankounaye		chef section	620 26 53 50
36	Khalou Salimou Camara	-II-		membre	620 29 52 89
37	Ousmane Diello	Balandafora		relais	620 60 85 18
38	Moussa Coulibaly	Bagga-chegout		Ingénieur	622 01 11 52
39	Fara Xesta Diello			Inspecteur	629 21 22 97
40	Hamadou Diou Diello	Balandafora		Chauffeur	621 03 50 00
41	Hamadou Diou Diello	Balandafora		membre	621 92 30 55
42	Babacon Ball	Wassou		Chauffeur	-
43	Hamadou Diou Diello	Balandafora		fondateur	622 93 72 89
44	Babacon Diello	-II-		Ingénieur	621 99 03 23
45	Beuvogui Bousygora	Chy		Chauffeur	622 28 29 62

7

CONSULTATION PUBLIQUE SUR L'EIES DU PROJET D'EXPORTATION DE BAUXITE EGA/GAC
SANGARÉDI, LE 8 FÉVRIER 2016

N°	Prénom et nom	Localité	Service	Fonction	Signature
61	M ^{me} Yero Tama	Lavage	District	Membre	6219125228
62	Galle Camara	Tantoulouman	Tanche	Planteur	622548827
63	Mamadou Alou BATH	Lavage	District	Secrétaire administratif	622048894
64	Sékou Oumar Diop	Sydi-centre	Sous-Préfecture	Sous-Préfet	622080566
65	Karamcho Diissé	Lavage	contrôle qualité de la sous-préfecture	chef de poste	622314403
66	Abdoul Karim Diatta	Rally-Kindy	-	Rechercheur	621923890
67	Sandaly Mansare	cité CBC	contrôle de Travail	chef de bureau	622094235
68	Mamadou BATH	Rally-saint	Société civile	charge des comptes	624728821
69	Oury Tenio BATH	Madina Médina	-	commerçant	623446857
70	Mamadou Calhou Diatta	Rally-saint	OSEF	Adjoint	623621167
71	Mamadou Oury BATH	Piwe	District	Agent de développement	623709287
72	Capitaine Roger	Silidara	Militaire	Capitaine	657575950
73	Simbe Tama	Lavage	District	Citoyen	622289972
74	Fanta Djakaby	Sanakoy	PNUD	Assistant Financier	622403925
75	Boubacar BATH	Silidara	CR-Sydi	Consulter	621903610

9

CONSULTATION PUBLIQUE SUR L'EIES DU PROJET D'EXPORTATION DE BAUXITE EGA/GAC
SANGARÉDI, LE 8 FÉVRIER 2016

N°	Prénom et nom	Localité	Service	Fonction	Signature
76	Amadou Diatta				
77	Amadou Diatta	Ai'koye	AC	-	
78	Alpha Oumar Camara	-11-	AC	-	
79	Oumar Bhoji Kabi Bath	Wossou	chef secteur	Eleveur	
80	Aguibou Bath	Bappa-Sarsou	Maçon	Maçon	
81	Mamadou Oury Camara	-11-	Soucou-Assougu	Mécanicien	620895136
82	Mamadou Oury Diatta	Ai'koye	ATS	ATS	
83	Abdoulatmane Bath	Barrière	Muséin	Marchand	
84	Amadou Tidiame Camara	Samagabie	Menuisier	Menuisier	622265263
85	Mamadou Saliou Diatta	Minel	Maçon	Maçon	
86	Hawawou Diatta	Ai'koye	Marchande	Marchande	622348862
87	Aboubacar Koumbassa	DambouTham	Maire	Maire	620240027
88	Alpha Oumar Bath	W/gyou	-11-	-11-	621908271
89	Gualé Camara	Tantoulouman	chef secteur	Planteur	622348857
90	Mamadou Jaya Bath	Wossou	-11-	-11-	620240083

10

**CONSULTATION PUBLIQUE SUR L'EIES DU PROJET D'EXPORTATION DE BAUXITE EGA/GAC
SANGARÉDI, LE 8 FÉVRIER 2016**

N°	Prénom et nom	Localité	Service	Fonction	Signature
91	Ajouma Diallo	secteur Parawad	Planteur	Planteur	
92	Mamadou Eroude Bah	Mobti	Relais COMM	Relais	620240013
93	Thierno Patrié Camara	Bhoumbouwa	Membre du Bureau	Mbr du Bureau	620265350
94	Mamadou Salieu Camara	-11-	chef de genese	-11-	620895689
95	Mamadou Lamarano NDiaye	Bappa-Sarsa	Technicien	Technicien	622176841
96	Mama Nouma Bah	Farengueyo	Membre Conseiller	-	624371333
97	Mamadou Bhoumbouwa Diallo	Minel	chef- secteur	-	628681522
98	Aboubacar Traoré	Conakry	chef C M G	chauffeur	628845337
99	Néné Fatoumata Bah	Cité C44	Santier de santé	Biologiste	628360852
100	Mamadou Marouf Diallo	Silidara	Agent de LAGUI	-	621404147

(1)

**CONSULTATION PUBLIQUE SUR L'EIES DU PROJET D'EXPORTATION DE BAUXITE EGA/GAC
SANGARÉDI, LE 8 FÉVRIER 2016**

N°	Prénom et nom	Localité	Service	Fonction	Signature
1	Damba Saaba BAH	Thionkromp	-	Soudeur	623195517
2	Haimouna BAH	Thionkromp	CR	conseillère	623345113
3	Diallo Karima	Rappa	Environem	chef de service	623507410
4	Kamara N'Dou	Rappa	-	Electricien	625068283
5	Kéno Randy Gamomy	Boko	Habitat	Directeur	622675362
6	Hou Alpha Oga	Soukha	district	citoyen	628065649
7	Amadou Jany Diallo	Lavage	CR	conseiller	620188065
8	Ibrahim BAH	Silidara	-	Menuisier	621917167
9	Diallo N'Dou Billa	Lavage	-	chauffeur	628908406
10	Touba Baita Camara	Rappa	CR	conseiller	628046497
11	Abdou Karim Ndiaye	Soukha	-	Opérateur	623598305
12	Narcisse Sou	Sglt. centre	Impôt	Administration CIVIL	62084982
13	Cherif Souané	Sglt. centre	Impôt	Administration CIVIL	622989135
14	Yaya BARRY	Thionkromp	Entrepreneur	Entrepreneur	620240755
15	Noummy BAH	Lavage	CECI-Guiné	Conseiller Technique	621360262

12

3

Suite (II)

CONSULTATION PUBLIQUE SUR L'EIES DU PROJET D'EXPORTATION DE BAUXITE EGA/GAC
SANGARÉDI, LE 8 FÉVRIER 2016

N°	Prénom et nom	Localité	Service	Fonction	Signature
21	Houlaye Diatta	Baako		Président	628 879 169
22	Alpha Fay Bangaly	-/-		4/procédure	622 50 33 51
23	Abdoulaye Kouba Sira	-/-		SPA	623 44 07 46
24	Mouctar Diatta	Bappa sergent		maître CR	628 31 24 15
25	Fy Lemias Tolmo	Goudakarmeri		Agent	620 46 29 49
26	Abdoulaye N'Diaye	-/-		-/-	623 51 11 90
27	Mamadouba Coumba	Goudakarmeri		grandatme	622 57 27 00
28	Aminata Camara	Cité	CBG	Trésorière	629 92 16 72
29	Agéimbo N'Diaye	Thiamboung		Menuisier	620 82 94 45
30	Abdul Ghaffar Ba	Bappa sergent		CAT/SEP	621 28 29 25
31	Selma Oumar Bangaly		Police	Agent	657 76 24 20
32	Souleymane Bauba	Bappa sergent		Indeun	621 30 98 68
33	Oumar Camara	Silidara		Robuste CBG	621 98 16 84
34	Boubacar Diatta	Salsoungor		Membrer	628 04 30 20
35	Salimata Diatta	Lavage		Menuisier	-

14

Suite

CONSULTATION PUBLIQUE SUR L'EIES DU PROJET D'EXPORTATION DE BAUXITE EGA/GAC
SANGARÉDI, LE 8 FÉVRIER 2016

N°	Prénom et nom	Localité	Service	Fonction	Signature
46	Gawron Camara	Lavage	-	Electricien	666 17 12 51
47	Hawa Alyse Diatta	Bappa sergent	-	Cocture	629 22 02
48	Oumar Balla Cra	Thiamboung	Police	Commandant Adjoint	621 91 72 59
49	Mamadou Oury Diatta	Bappa-Sergent	CRADL		628 92 47 29
50	Mamadou Ojan Diatta	Thiamboung	Police		621 56 10 31
51	EL. Aboubacar Fofana	Silidara	Vice Président du district		624 89 17 83
52	Samba Dombouya	Bappa-Sergent	Minieur retraité	-	621 91 72 72
53	Mamadou Ojan Camara	Cité D15	CBG	Electricien	628 35 76 19
54	Jabrissa Mané	Cité CBG	CBG	Electricien	621 40 33 26
55	Aboubacar N'konté	Bappa sergent	Menuisier	-	620 52 25 82
56	Mouctar Diatta	Silidara	EGB	Agent	628 85 48 37
57	Alpha Oumar II Barry	PLV	Diplômé	-	620 26 59 53
58	Thierno Amadou Seck	Lavage	Grip		622 78 73 53
59	Jacuda N'Diaye	Bappa-sergent	Police	-	-
60	Abdoul Kader Touré	-/-	EGB	Agent	-

15

Suite 5

CONSULTATION PUBLIQUE SUR L'EIES DU PROJET D'EXPORTATION DE BAUXITE EGA/GAC
SANGARÉDI, LE 8 FÉVRIER 2016

N°	Prénom et nom	Localité	Service	Fonction	Signature
61	Thierno Madjou Sira Diallo	Sangarédi Cité	Ing. Mines	Président de com. états	620 18 89 08
62	Salimataou Bah	Barrière	Vendeuse		624 89 15 63
63	Mamadou Toucou Diallo	Sifidara	BAOBAB-DAPU	Président de com. états	624 68 87 92
64	Aboubacar Coumbassa	DambanThamp	Relais	Relais	623 40 77 55
65	Alpha Sompou	-1-	Relais	Relais	623 33 34 60
66	Ibrahima Sory Camara	Sifidara	L'AGDI PRESS	Agent	628 64 12 83
67	Yagouba Diallo	Ai Kouye	-	Marabout	628 68 12 88
68	Bimba Yataba	Cité D31	G B Ca	Administrat	628 89 57 15
69	Sékou Oumar Ly	Mine	-	Enseignant	628 79 61 04
70	BAT Mamadou Goro	Sangarédi	Société Civile	Enseignant	634 78 88 81
71					
72					
73					
74					
75					

16

N°2

CONSULTATION PUBLIQUE SUR L'EIES DU PROJET D'EXPORTATION DE BAUXITE EGA/GAC
SANGARÉDI, LE 8 FÉVRIER 2016

N°	Prénom et nom	Localité	Service	Fonction	Signature
16	Mamadouba Cissé	Boté	DMP	S.P.D - Boté	628 22 15 00
17	Mamadouba Koumbassa	Boté	Hydraulique	Directeur regio	664 88 35 25
18	Mamadouba Soumah	Boté	Environnement	Inspecteur chef des E/R - Bédou	622 94 83 57
19	Naby Camara	-1-	D P M	représentant du directeur	669 53 48 32
20	Mouctar Bémy Diallo	Bappa-sargent	Gendarmerie	Gendarme	623 14 49 77
21	Aissatou Diallo	DFAB	Marchande	-	626 73 37 13
22	Alpha Amadou Barry	Boté	Chauffeur	-	623 49 27 60
23	BIG Naby Sylla	Bappa-sargent	Police	Agent de sécurité	624 83 48 81
24	Lakimataou Sompou	-1-	Service impo		669 29 33 84
25	Mamadou Lamine Camara	-1-	M. de quartier		621 47 47 22
26	Abdoul Guadiry Sow	Cité DFAB	Gendarmerie	Commandant adjoint	628 79 33 22
27	Ibrahima Sory Sylla	-1-	Police	Commissaire	620 18 74 23
28	Ousmane Dramboya	Mine	Briqueterie	-	623 17 28 44
29	EL Mamadou Djoulé Bak	Bappa-sargent	Vico - Mais		623 73 15 12
30	Mamadou Samba Barry	Thankoumaye	ex conseiller		623 78 93 33

13

Appendix 5. MBS PROJECT- ENGAGEMENT PLAN

1. BACKGROUND INFORMATION

In order for GAC to improve the investment case for the Guinea Bauxite Export Project, a bauxite mining project in the Boké Prefecture of the Republic of Guinea, GAC is seeking approval to address marketing risk for the main Bauxite Export project by developing a solution to mine, prepare and transport bulk samples into the International market. Engagement with potential Chinese customers has identified the need for multiple +50,000 t samples in order for the potential customers to enter into longer term contracts required to support project implementation. This has been titled “GAC Marketing Bauxite Samples” (MBS) initiative.

To maximize the probability of securing the above-mentioned long-term off-take agreements GAC is expediting this initiative and is targeting export of first bauxite over the KCT by Q3 2016 and it envisaged that these samples will be shipped to potential customers for 2-3 years, unless offtake agreements are secured earlier. Upon which export of these samples will cease as GAC do not expect to cover their capital and operating costs of this ore due to the non-commercial quantities of bauxite being exported.

GAC have engaged Environmental Resources Management (ERM) to produce a Social and Environmental Impact Assessment (SEIA) specific to the MBS initiative. This considerable body of work has commenced.

The SEIA will include a Stakeholder Engagement Plan (SEP) developed as part of the initial stage of Social and Environmental Impact Assessment (SEIA) Addendum studies. The SEP is intended to serve as a guidance document to manage and record interactions between the Project and stakeholders at different stages of a project’s design and execution.

GAC also commits to return the National Highway, N22, to its current state prior to the MBS trucking operation. GAC has commissioned a Road Condition Survey of the haul path from Tinguilinta to Kamsar and will appoint a contractor responsible for road repairs.

3. CONSULTATION PLANS

The following plans are updated as often as necessary according to the Project’s schedule:

- 6. Consultations with the communities in the area to be affected by the Project activities- On the concession and along the corridor Sangarédi-Kamsar- list of communities provided in annex*
- 7. Consultation with the “ Commune” Sub-prefectoral and Prefectoral authorities*
- 8. Public hearings*
- 9. Communication with Operations Department to ensure proper agreed measures are considered upfront starting the activities.*

4. IMPLEMENTATION

a. Consultations/information to the communities

The below table shows all of the recorded engagements with the communities affected by the MBS Project specifically.

As the blasting activities started, the surrounding communities (plateau 20) have been informed on the safety aspects and the GAC community team is in the field when such activities are happening to ensure that the buffer zone is free of human being and animals.

Road safety: A series of meetings were held with the Presidents of Districts and mayors in the "Commune Rurale"-CR along the corridor (Tanéné, Boké, Kolaboui and Kamsar). During the meetings discussions around road safety (both pedestrians and drivers) help the various group to not only be aware of the Project's road safety impact but also to adopt safety behaviors along and on the road.

Refer below for this program being implemented till end of 2016.

Planning d'information et de formation des parties prenantes sur la sécurité routière et les procédures des plaintes																							
No	Parties Prenantes	Activites planifiees	Lieux de réalisation	Résultats attendus	Responsables	Periode																	
						Septembre 2016				Octobre 2016				Nvembre2016									
						S1	S2	S3	S4	S1	S2	S3	S4	S1	S2	S3	S4						
1	Presidents des districts de Tanéné,Dambanchan, chef quartier de Kolaboui , Boké centre et Kamsar	Planification des differentes rencontres (contact et depot de lettres)	Tanéé,Dambanchan, Kolaboui , Boké centre, Kamsar	5 réunions tenues;	Equipe relations communautaires- Equipe santé sécurité Relation gouvernementale	X	X	X															
2	Les sections de la police sous prefectorale et prefectorale	Recherche des statistiques des differents accidents enregistrés dans les differentes sous prefectures traversees par le passage de la bauxite de GAC	Sangaredi, Tanene, Boke , Kolaboui et Kamsar	5 consultation realiees	Equipe relations communautaires- Equipe santé sécurité		X	X															
3	Presidents des districts de Tanéné,Dambanchan, Kolaboui , Boké centre, Kamsar	Information et sensibilisation sur le projet MBS et de la sécurité routiere , les procedures de plainte.	Tanéé,Dambanchan, Kolaboui , Boké centre, Kamsar	10 reunions tenues soient 8 dans la concession et 2 à Kamsar	Equipe relations communautaires- Equipe santé sécurité		X	X	X														
4	Les chefs secteurs de districts et leaders	Information et sensibilisation sur le projet MBS et de la sécurité routiere , les procedures de plainte de Tingulinta a Kamsar	Dambanchiam, Tanene, Boke centre , Kolaboui et Kamsar	6 reunions tenues	Equipe relations communautaires- Equipe santé sécurité					X	X												
5	Presidents des districts, les chefs secteurs, les notables les chefs quartiers, la DPJ.	Information et sensibilisation sur le projet MBS et de la sécurité routiere , les procedures de plainte de Tingulinta a Kamsar	Dans les villages du corridor de Dambanchiam à Kamsar	10 reunions tenues	Equipe relations communautaires- Equipe santé sécurité Relation gouvernementale							X											
6	Les syndicats de transporteurs-les usagers de la route et la section de la securite routiere de boke et ses antennes.	Information et sensibilisation sur le projet MBS et de la sécurité routiere , les procedures de plainte de Tingulinta a Kamsar	Sangaredi, Tanene, Boke centre , Kolaboui et Kamsar	18 reunions tenues	Equipe relations communautaires- Equipe santé sécurité Relation gouvernementale								X	X	X								
7	Les Directeurs des écoles, les DSEE et les élèves	Organiser des seances de sensibilisation sur la sécurité routiere dans les ecoles des villages riverains le long du corridor de passage de la bauxite de GAC	Sangaredi, Tanene, Boke centre , Kolaboui et Kamsar	10 seances de sensibilisation realisees dans les ecoles	Equipe de relation communautaire et celle de la sante sécurité Relation gouvernementale								X	X	X	X	X						
8	Radio CBG, Radio rurale de Boké, Radio Espace	Information et sensibilisation des communautés a travers des spots radio, des dépliants, Tsirts, couverture mediatique	Boke centre et Kamsar	population largement informées et sensibilisées	Cellule de communication de GAC			X	X	X	X	X	X	X	X	X	X	X	X	X	X	X	X
9	Districts de dambanchiam, Tanene, Boke centre, Kolaboui et Kamsar	Organiser un tournoi de football entre les villages riverains le long du corridor de passage de la bauxite de GAC	Tanene, Boke, Kolaboui et kamsar	Un tournoi de quatre (4) trophées réalisé	Equipe de relation communautaire et celle de la sante sécurité- Cellule communication, Relation gouvernementale										X	X	X	X					

Public hearing: As part of the Guinea permitting process, public hearings were held in the “Commune” of Sangarédi, Boké and Conakry. Minutes of meeting in annex 3. Prefect, sub-prefects, mayors and representative of civil society attended.

Additional information campaign-MBS Project: Recommended by the CTAE (Comité Technique d'Analyse Environnementale) the BGEEE (Bureau Guinéen d'Etudes et Evaluations Environnementales), institution responsible to deliver permit, along with Representatives of various Ministries, will conduct a series of meetings for all CR along the corridor. Schedule is presented below. The purpose of this series of meeting

is to reinforce the information around the MBS Project objectives/activities, health and safety measures for communities. 59 towns and villages to be invited (at least 225 villages' representatives)

Planning of MBS additional Information campaign¹⁰			
N	Période	Activités	Obs.
1	Jour 1 09/10/2016	<ul style="list-style-type: none"> ➤ Voyage Conakry-Boké ➤ Entretien avec les autorités territoriales de Boké 	
2	Jour 2 10/10/2016	<ul style="list-style-type: none"> ➤ Rencontre d'échanges entre les services centraux et déconcentrés ; ➤ Voyage sur Sangarédi 	
3	Jour 3 11/10/2016	<ul style="list-style-type: none"> ➤ Séance de sensibilisation à Sangarédi ; ➤ Retour à Boké. 	20 Villages'rep
4	Jour 4 12/10/2016	<ul style="list-style-type: none"> ➤ Séance de sensibilisation à Tanènè ; 	62 villages' rep
5	Jour 5 13/10/2016	<ul style="list-style-type: none"> ➤ Séance de sensibilisation à Boké ; 	61 villages'rep
6	Jour 6 14/10/2016	<ul style="list-style-type: none"> ➤ Séance de sensibilisation à Kolaboui; 	42 villages'rep
7	Jour 7 15/10/2016	<ul style="list-style-type: none"> ➤ Séance de sensibilisation à Kamsar; 	40 villages'rep
8	Jour 8 16/10/2016	<ul style="list-style-type: none"> ➤ Voyage Kamsar- Conakry 	

A full report of this campaign is available, and the major concerns are addressed:

¹⁰ List of villages annex 2 :

Abstracts from the BGEEE Report¹¹:

A l'issue de cette campagne de sensibilisation des usagers de la route, les recommandations suivantes ont été formulées :

- confier la sécurisation des convois à la police et à la gendarmerie ;*
- réaliser la contournante pour réduire considérablement les risques d'accidents ;*
- observer strictement les horaires de passage des convois de camions conformément aux mentions de l'étude d'impact environnemental et social du projet ;*
- prioriser le recrutement et la formation de la main d'œuvre locale, principalement les jeunes des localités couvertes par le projet pour assurer la sécurité le long de la voie routière ;*
- démultiplier et pérenniser les acquis de la campagne de sensibilisation ;*
- contribuer à la réalisation de nouvelles infrastructures pour la délocalisation de la gare-routière de Kolaboui.*

¹¹ Rapport de mission-Sensibilisation des populations sur le transport par la voie routière des échantillons de bauxite de Guinée Alumina Corporation (GAC) dans la Commune Urbaine de Boke, et les Communes Rurales de Sangaredi, Tanene, Kolaboui, Kamsar- Octobre 2016

Each of the concerns has been addressed where possible and described in the following section.

b. Community engagement/collaboration

Part of transport management plan, The MBS Project has recruited 50 youth from the CR along the corridor (Tanènè, Boké, Kolaboui and Kamsar). By this engagement in the communities affected along the corridor, it is expected that the risk to community safety will be minimize during the night transport. The role of the youth is to inform the responsible of the convoy of any potential disturbance on the road, improve visibility and overall road safety.

A traffic management plan for this specific project is in place and communicated to the communities during the Road Safety Campaigns. Convoys are escorted by a security company and schedule to transport the bauxite at night time is respected.

Part of the extraction of the bauxite, youth from the communities surrounding the plateau have been recruited to monitor both the cattle and the villagers, especially during blasting period.

Part of the Port activities: Information sessions will be held with the local authorities of Kamsar and associations of fishermen impacted by the Project activities. Some fishermen will be hired to monitor the area of activities in order to prevent safety risks.

All of these hired youth benefit of basic health and safety trainings sessions and learn GAC's health and safety procedures. The ultimate goal is that through these trainings a culture of health security will be spread in communities

5. Grievance Mechanism

The current grievance mechanism is applied for the MBS Project.

10. DURING THE PROJECT LIFE

This SEP will evolve as the Project moves forward. Consultation and mitigation measures will be reviewed as often as necessary.

Annex 1: List of engagement from June to September

MBS (SC-00008) (Communications)						
No. de réf.	Date	Titre	Objectifs	Partie prenante	Localisation	Lieu
C-00232	16-06-2016	Information et sensibilisation sur le niveau d'avancement du projet GAC à l'intention des chefs secteurs des villages couverts par les activités de la société dans le district de Balandougou	Informier et sensibiliser les chefs secteurs des villages couverts par les activités de la société sur le niveau d'avancement du projet GAC	Voir PV attaché (I-05567) (Les communautés sont les parties prenantes)		Sindiaré, Balandougou, Sangarédi, Boké, Guinée Maritime,
C-00228	17-06-2016	Information et sensibilisation sur le niveau d'avancement du projet GAC à l'intention des chefs secteurs du district de Sindiaré	Informier et sensibiliser les chefs secteurs des villages couverts par les activités de la société sur le niveau d'avancement du projet GAC	Voir PV (I-05567) (Les communautés sont les parties prenantes)	Soucka Centre, Sangarédi, Boké, Guinée Maritime, Guinée (District)	Soucka Centre, Sangarédi, Boké, Guinée Maritime, Guinée (District)
C-00234	17-06-2016	Information et sensibilisation sur le niveau d'avancement du projet GAC à l'intention des chefs secteurs du district de Soucka	Informier et sensibiliser les chefs secteurs des villages couverts par les activités de la société sur le niveau d'avancement du Projet GAC.	Voir PV attaché (I-05567) (Les communautés sont les parties prenantes)	Soucka Centre, Sangarédi, Boké, Guinée Maritime, Guinée (District)	Soucka Centre, Sangarédi, Boké, Guinée Maritime, Guinée (District)
C-00233	28-06-2016	Information et sensibilisation sur le niveau d'avancement du projet GAC à l'intention des chefs secteurs du district de N'dangara	Informier et sensibiliser les chefs secteurs des villages couverts par les activités de la	Voir PV attaché (I-05567) (Les communautés sont les parties prenantes)		Gbaglon

			société sur le niveau d'avancement du Projet GAC.			
C-00231	30-06-2016	Information et sensibilisation sur le niveau d'avancement du projet GAC à l'intention des chefs secteurs du district de Boulléré	Informier et sensibiliser les chefs secteurs des villages couverts par les activités de société sur le niveau d'avancement du projet GAC	Voir PV attaché (I-05567) (Les communautés sont les parties prenantes)	Boulléré, Boulléré, Sangarédi, Boké, Guinée Maritime, Guinée (Secteur)	Boulléré, Boulléré, Sangarédi, Boké, Guinée Maritime, Guinée (Secteur)
C-00242	30-06-2016	Information sur le MBS	Présenter le projet MBS, l'EISE et les engagements de GAC	Voir PV attaché (I-05567) (Les autorités et la communauté sont les parties prenantes)	Kamsar, Boké, Guinée Maritime, Guinée (Sous-préfecture)	Kamsar, Boké, Guinée Maritime, Guinée (Sous-préfecture)
C-00243	30-06-2016	Information sur le MBS	Présenter le projet MBS, l'EISE et les engagements de GAC	Voir PV attaché (I-05567) (Les autorités et la communauté sont les parties prenantes)	Kamsar, Boké, Guinée Maritime, Guinée (Sous-préfecture)	Kamsar, Boké, Guinée Maritime, Guinée (Sous-préfecture)
C-00235	1/7/2016	Information et sensibilisation sur le niveau d'avancement du projet GAC à l'intention des chefs secteurs du district de Wossou	Informier et sensibiliser les chefs secteurs des villages couverts par les activités de la société sur le niveau d'avancement du Projet GAC.	Voir PV attaché (I-05567) (Les communautés sont les parties prenantes)	Wossou Centre, Sangarédi, Boké, Guinée Maritime, Guinée (District)	Wossou Centre, Sangarédi, Boké, Guinée Maritime, Guinée (District)

C-00256	27-07-2016	Tenue d'une d'information et de sensibilisation à Kolaboui, a la commune urbaine de Boké et à Sangarédi sur le niveau d'avancement du projet MBS à l'intention des différents syndicats de transporteurs et de Taxi motos, de l'union des transporteurs, les chefs quartiers de la commune urbaine de Boké, le Maire de la commune urbaine et ses conseillers	Informier et sensibiliser l'ensemble des usagers de la route sur le trajet Sangarédi-Kamsar sur le niveau d'avancement du projet MBS	Voir PV attaché (I-05567) (Les communautés sont les parties prenantes)	Boké, Guinée Maritime, Guinée	Salle de deliberation
C-00274	27-07-2016	Tenue d'une réunion d'information et de sensibilisation à Kolaboui, a la commune urbaine de Boké et à Sangarédi sur le niveau d'avancement du projet MBS à l'intention des différents syndicats de transporteurs et de Taxi motos, de l'union des transporteurs, les chefs quartiers de la commune urbaine de Boké, le Maire de la commune urbaine et ses conseillers	Informier et sensibiliser l'ensemble des usagers de la route sur le trajet Sangarédi-Kamsar sur le niveau d'avancement du projet MBS	Voir PV attaché (I-05567) (Les communautés sont les parties prenantes)	Boké, Guinée (Ville)	- salle de délibération de la commune rurale de Kolaboui, - Salle de réunion de la commune urbaine de Boké, - Salle de délibération de la commune rurale de Sangarédi

C-00260	27-07-2016	Réunion d'information et de sensibilisation des populations des villages (Horé wendou, Tantouloumane Bowé Tantouloumany Missidé, Sinthiourou Madina2, Djarabaka et Guidaly carriere, Guidaly) riverains au plateau 20 et sur l'axe du plateau 20 à Tanéné centre au tour des activités du projet MBS pour la prévention des risques d'incidents ou accident en collaboration avec le département de santé sécurité.	Informier et sensibiliser les communautés pour la prévention des risques d'incidents ou d'accidents au tour des activités du projet MBS	Voir PV attaché (I-05567) (Les communautés sont les parties prenantes)	Boké, Guinée Maritime, Guinée	Boké, Guinée Maritime, Guinée
C-00273	27-07-2016	Réunion d'information et de sensibilisation des populations des villages (Horé wendou, Tantoulmane Bowé Tantoulmany Missidé, Sinthiourou Madina2, Djarabaka et Guidaly) riverains au plateau 20 et sur l'axe du plateau 20 a Tanéné centre au tour des activités du projet MBS pour la prévention des risques d'incidents ou accident en collaboration avec le département de santé sécurité.	Informier et sensibiliser les communautés pour la prévention des risques d'incidents ou d'accidents au tour des activités du projet MBS	Voir PV attaché (I-05567) (Les communautés sont les parties prenantes)	Boké, Guinée (Ville)	Chez le sage de village de Hore wendou centre, Gallé Camara, chef secteur, Tantoulmane Mosqué

C-00271	2/8/2016	Information sur le projet MBS	Présenter le projet MBS, l'EISE et les engagements de GAC	Voir PV attaché (I-05567) (Les communautés sont les parties prenantes)	Kamsar, Boké, Guinée (Sous-préfecture)	Kamsar, Boké, Guinée (Sous-préfecture)
C-00270	10/8/2016	Réunion d'information et de sensibilisation des populations des villages de (Bhoundou Lingué et Bely kindy) au tour des activités du projet MBS sur le plateau 20 pour la prévention des risques d'incidents ou accidents éventuels en collaboration avec le département de santé sécurité.	Informier et sensibiliser les communautés pour la prévention des risques d'incidents ou d'accidents éventuels au tour des activités du projets MBS.	Voir PV (I-05567) (Les communautés sont les parties prenantes)	Bhoundou Lingué, Beli Kindy, Dambantian, Tanéné, Boké, Guinée Maritime, Guinée (Village)	Bhoundou Lingué, Beli Kindy, Dambantian, Tanéné, Boké, Guinée Maritime, Guinée (Village)
C-00276	6/9/2016	Restitution des résultats d'études d'impact environnemental et social du projet MBS	En date du jeudi, 06 septembre 2016, les communautés riveraines du projet EGA/GAC se sont réunies autour des autorités locales et préfectorales au centre culturel de Kamsar de 10h59 a 15h00 sur invitation du bureau Guinéen d'études et d'évaluation environnementale (BGEEE) du ministère de l'Environnement, des Eaux et Forêts.	Voir PV (I-05567)	Kamsar, Boké, Guinée Maritime, Guinée (Sous-préfecture)	Centre Culturel de Kamsar

	14/09/2016	Audience Publique sur l'étude d'impact Environnemental et Social du projet MBS	L'an deux milles seize et le mercredi 14 septembre, les membres du comité technique d'analyse environnementale (CTAE) se sont réunis dans la salle de réunion de l'hôtel PALM Camayenne de 9h10mn a 13h30mn, autour du rapport d'étude d'impact environnemental et social (EIES) du projet d'exportation d'échantillons de bauxite par Guinea Alumina Corporation (GAC), dans la préfecture de Boké.	Voir PV pour les détails	Conakry	Conakry
--	------------	--	--	--------------------------	---------	---------

Annex 2: List of communities affected by MBS in addition of the communities around Plateau 20

N	Localité Tanene	Localité Boké	Localité Kolaboui	Localité Kamsar
1	Tanéné Centre	Boké Centre	Kolaboui Centre	Kamsar Centre
2	Hamdanlaye	Tambankoumbaya	Mansalia	Quartier Kamsar Bagataye
3	Tchinguibalè	Tamaransy	Kereki	Kassongony 1
4	Dawaf	Missira	Fodecontea	Kassongony 2
5	Taibata Landouma	Kassef	Kataba Landouma	Filima
6	Taibata Foulbhè	Quatre cent batiments	Denken	Madina Borobof
7	Djarabaka	Yomboya	Kakoumba Tambandoriah	Kassitri
8	Nassouroulaye	Lambayi	Diassia	Kamakouloun
9	Guidali	Goreye	Dannaya	Toumbetaye
10	Madina Sintchourou	Dibia	Kyaye	
11	Madina Tchiouraye	Kougnewade 1	Madina Kantou	
12	Worè Wéndou	Kougnewade 2	Madian Toubataye	
13	Bingale	Koulinfanya		
14	Tantou Landouma	Baralande		
15	Boundou Léngué	Tamakenen		
16	Béli Timbi Cité	Dar Es-Salam		
17	Gobirè			
18	Lobhè			
19	Tinguilinta			

Annex 3: Minutes of Meetings- Public Hearings-MBS

RÉPUBLIQUE DE GUINÉE
Travail-Justice-Solidarité

AUDIENCE PUBLIQUE SUR
L'ETUDE D'IMPACT
ENVIRONNEMENTAL ET SOCIAL
DU PROJET D'EXPORTATION
D'ECHANTILLONS DE BAUXITE
PAR LA SOCIETE GUINEA
ALUMINA CORPORATION
(GAC) (PREFECTURE DE BOKE)

PROCÈS-VERBAL DE DÉLIBÉRATION

Session N° 011 / BGEEE /CTAE/DG/CONAKRY du 14 septembre 2016

L'an deux mil seize et le mercredi 14 septembre, les membres du Comité Technique d'Analyse Environnementale (CTAE) se sont réunis dans la salle de réunion de l'hôtel PALM Camayenne de 9h10 mn à 13h30 mn, autour du rapport d'étude d'impact environnemental et social (EIES) du projet d'exportation d'échantillons de bauxite par Guinea Alumina Corporation (GAC), dans la préfecture de Boké.

La rencontre avait pour objet, l'examen et la validation du contenu technique et scientifique du rapport d'EIES du projet d'exportation d'échantillons de bauxite.

La session d'audience publique a été présidée par Monsieur Fassama KOUROUMA, Ministère des Mines et de la Géologie qui a introduit la séance par la présentation de l'ordre du jour, le rappel du contexte de l'étude et des composantes du projet. Cette intervention a été précédée par un tour de table qui a permis aux membres du CTAE de se présenter.

Les points suivants étaient inscrits à l'ordre du jour :

1. Présentation de l'objet de l'audience publique ;
2. Présentation des résultats de l'EIES ;
3. Questions, commentaires et observations des membres du CTAE ;
4. Réponses du Consultant aux questions et observations formulées par les membres du CTAE ;
5. Finalisation et adoption du Procès-verbal de l'audience publique.

Étaient présents :

Pour le Ministère de l'Environnement, des Eaux et Forêts (MEEF)

1

Le Conseiller chargé de l'Environnement, les représentants de la Direction Générale du BGEEE, le représentant de la Direction Nationale des Eaux et Forêts.

Pour le Ministère des Mines et de la Géologie

Le représentant de la Direction Nationale des Mines, le Directeur Général Adjoint du Service National de Coordination des Projets Miniers, le représentant du Projet d'Usine d'Alumine de Sangaredi (PUAS) et le représentant du Secrétariat Permanent/Guichet Unique.

Pour le Ministère de l'Energie et de l'hydraulique

Le représentant de la Direction Nationale de l'Hydraulique.

Pour le Ministère de l'Administration du Territoire et de la Décentralisation

Le représentant de la Direction Nationale de l'Administration du Territoire.

Pour le Ministère de la Sécurité

Le représentant de la Direction Générale de la police Nationale.

Pour le Ministère des transports

Le Conseiller Economique du Ministre des Transports.

Pour le Ministère des Travaux publics

Le Directeur Général Adjoint du Bureau de Stratégie et de Développement.

Pour Guinea Alumina Corporation (GAC)

Madame la Directrice Générale de GAC, le Responsable des Etudes et le Responsable des Relations Gouvernementales

Pour les Cabinets d'étude ERM et INSUCO

Le Chef du projet ERM et la Directrice Technique INSUCO.

Cf : Liste des participants en annexe.

Le Conseiller chargé de l'Environnement, du Ministère de l'Environnement, des Eaux et Forêts, a transmis le soutien de Madame le Ministre de l'Environnement, des Eaux et Forêts à la présente audience, avant de remercier les consultants pour la pertinence des données contenues dans le rapport.

Le Directeur Général du BGEEE, Dr Seydou Bari SIDIBE, a remercié l'ensemble des invités et membres du CTAE pour avoir accepté de prendre part à cette audience en contribuant à l'amélioration du contenu du rapport d'EIES de ce projet d'exportation d'échantillons de bauxite.

Poursuivant son intervention, il a défini la procédure d'évaluation environnementale en vigueur pour les membres du CTAE qui sont à leur toute première session.

Le Directeur du BGEEE a indiqué deux étapes de validation, à savoir la séance de consultation publique précédée d'enquêtes publiques dans les localités concernées par le projet, et la séance d'audience publique du CTAE.

2

En outre, il a rappelé les différents enjeux liés à ce projet d'exportation d'échantillons de bauxite et formulé des interrogations dont entre autres, comment la cohabitation serait-elle possible sur cette voie, entre les gros camions transportant le minerai de bauxite et les autres usagers du transport en commun, surtout lorsqu'il s'agit d'une route nationale reliant des pays voisins ; les normes appropriées et la fiabilité des mesures de sécurité indiquées dans le rapport sur les personnes, les animaux et l'état de la voie routière.

Concernant la sensibilisation, le Directeur Général du BGEEE a informé que la société GAC a organisé une séance de consultation publique à Kamsar le 06 septembre dernier qui n'a pas été précédée d'enquêtes publiques conformément à la procédure en vigueur. En conséquence, il a noté que les préoccupations et avis recueillis auprès des communautés restent vraisemblablement très limités.

Enfin, le Directeur Général du BGEEE a demandé aux consultants de fournir des exemples de transport de minerai à travers le monde cohabitant sur un même réseau routier avec le transport en commun, afin de permettre aux services techniques centraux et territoriaux de l'Administration, chargés du contrôle de la mise en œuvre du plan de gestion environnementale et sociale de s'en inspirer.

A la suite, le Directeur National des Mines a tenu à informer les membres du CTAE sur les contributions importantes de la société GAC dans le développement du pays, notamment la réalisation du pont de Tamarassy. Il a évoqué aussi, les difficultés liées à l'aménagement d'une voie de contournement de la ville de Boké à cette phase du projet. Enfin, il a exhorté les membres du CTAE à soutenir la réalisation du présent projet d'exportation d'échantillons de bauxite par Guinea Alumina Corporation, dans la préfecture de Boké dans l'intérêt des parties prenantes.

Les principaux thèmes présentés par le Consultant sont les suivants :

- L'historique du projet global et présentation du projet Market Bauxite Samples (MBS);
- La description générale du projet ;
- Les principes du projet MBS ;
- La localisation des ressources ;
- Les infrastructures nécessaires à la mine ;
- Le calendrier prévisionnel ;
- Le complément d'étude à l'EIES ;
- La sécurité routière ;
- Les études de circulation ;
- Les bruits ;
- Les forêts et habitats naturels ;
- Le Plan de Gestion Environnementale et Sociale ;
- Les engagements de GAC.

Les principaux avis et préoccupations formulés par les membres du CTAE :

▪ ***Sur la forme du document***

Annexer les termes de référence (TdR) aux rapports.



3

▪ Sur le projet

- Le respect de la charge à l'essieu suivant la norme CEDEAO variant de 11,5 à 13 tonnes ;
- La construction des installations ferroviaires parallèlement au transport du minerai par voie routière afin de passer du transport routier au transport ferroviaire.

▪ Sur le cadre juridique

Au niveau du cadre réglementaire international, remplacer « Acquisition des terres et réinstallation volontaire » par « Acquisition des terres et réinstallation involontaire » dans la phrase relative au titre de la norme 5 de la SFI.

▪ Sur le PGES

- Faire un plan de gestion des risques et dangers prévoyant l'implantation des panneaux de signalisation liés au projet sur le long du réseau routier;
- limiter les vitesses de 30 à 40 Km/h dans les agglomérations et à 60 Km/h au maximum en rase campagne ;
- Matérialiser les points de croisement ;
- Entreprendre dans les meilleurs délais sous la coordination du Bureau Guinéen d'Etudes et d'Evaluation Environnementale des consultations publiques à la charge de GAC, impliquant tous les départements sectoriels concernés, afin de donner d'amples informations aux communautés vivant à proximité de la voie routière, sur les conditions d'organisation de ce transport, cela pour pallier à toutes formes de riposte ;
- Impliquer les Ministères en charge de la sécurité et des transports dans la mise en place d'un plan de gestion globale du trafic routier avant toute activité ;
- Impliquer le service technique en charge de l'entretien routier du Ministère des Travaux publics pour l'entretien du réseau.

CONCLUSION

Aux termes des débats contradictoires sur les réponses et remarques des consultants ERM et INSUCO, les membres du Comité Technique d'Analyse Environnementale (CTAE) ont décidé ce qui suit :

L'approbation du rapport d'étude d'impact environnemental et social du projet d'exportation d'échantillons de bauxite de Guinea Alumina Corporation en Guinée sous réserve de la prise en compte des observations formulées au cours de la présente audience publique, notamment la sensibilisation des communautés riveraines et le renforcement des mesures générales de sécurité tout au long de la voie routière (Sangaredi-Boké-Kolaboui-Kamsar).

Ainsi, sur la base de cette conclusion du Comité Technique d'Analyse Environnementale (CTAE), Guinea Alumina Corporation est en droit de solliciter auprès du Guichet Unique/Secrétariat Permanent, tous permis et autorisations pour lesquels la réalisation et la validation de d'étude d'impact environnemental et social du projet d'exportation d'échantillons de bauxite sont requises.



ONT SIGNÉ

Président de séance
Ministère des Mines et de la Géologie



Fassama KOUROUMA

1^{er} Assesseur

Conseiller Ministre Environnement



Lansana CONTE

2^{eme} Assesseur

Conseiller Ministre des Transports



Dr Younoussa KOÏTA

Pour le Représentant de GAC
Le Responsable Relations Gouvernementales



René MOREL

Pour Représentant du Bureau d'Etudes ERM
Le Consultant Principal



Bernard VANLIEFERINGHEN

Rapporteur
Le Directeur Général BGEE



Dr Seydou Bari SIDIBE



REPUBLIQUE DE GUINEE
Travail-Justice-Solidarité
MINISTÈRE DE L'ENVIRONNEMENT, DES EAUX ET FORÊTS
Bureau Guinéen d'Etudes et d'Evaluation Environnementale
DIRECTION GENERALE



BP : 761 CONAKRY

E-mail : bgeenv@gmail.com

Fiche d'Emargement des Membres du CTAE pour l'Examen et la Validation de l'Étude d'Impact Environnemental et Social (EIES) du Projet d'Exploitation de Bauxite par la Société GUINEA ALUMINA CORPORATION (GAC) dans la Préfecture de Boké.

No	Prénoms et Noms	Services invités	Statut au comité	Contacts	Emargements
1	Lansana CONTE	Conseiller à l'Environnement	1 ^{er} Assesneur	622-59-39-68	<i>Conte</i>
2	Fassama KOUROUMA	Direction Générale Projets des Miners	Président	628-251-813	<i>Skou</i>
3	Fodé MAGASSOUBA	Direction Nationale des Mines	Membre	628-49-24-53	<i>M</i>
4	Dr Seydou Bari SIDIBE	Direction Générale du BGEED	2 ^{eme} Assesneur	628-72-44-92	<i>Sidibe</i>
5	Cécé Jérôme KPOGHOMOU	Direction Générale du BGEED	Rapporteur	62 571 80 21	<i>Kpogh</i>
6	Aliou CAMARA	D.N.E.F / MEEF	Membre	622-27-53-13	<i>Aliou</i>
7	Fodé BERETE	DN des Mines/MMG	Membre	622-91-27-91	<i>Berete</i>

Ministère de l'Environnement Des Eaux et Forêts



REPUBLIQUE DE GUINEE
Travail-Justice-Solidarité
MINISTÈRE DE L'ENVIRONNEMENT, DES EAUX ET FORÊTS
Bureau Guinéen d'Etudes et d'Evaluation Environnementale
DIRECTION GENERALE



BP : 761 CONAKRY

E-mail : bgeenv@gmail.com

8	Bangaly DIOUMESSY	DN de l'Environnement	Membre	622-44-02-55	<i>Dioumessy</i>
9	Vaféré KOULIBALY	DNA des Mines/MMG	Membre	664-78-86-73	<i>Koulibaly</i>
10	Abdourahimi BARRY	Direction Générale/BGEED	Membre	628-66-45	<i>Barry</i>
11	Aboubacar SYLLA	DEPMC-BGEED	Membre	621-09-88-88	<i>Sylla</i>
12	Ibrahima Kalil KOUROUMA	BSD/Ministère des Travaux Publics	Membre	622-32-48-20	<i>Kourouma</i>
13	Mamadou Saidou Bimbiriko BARRY	DGA/DGSPM/ MMG	Membre	628-84-32-85	<i>Barry</i>
14	Abdoulaye SANOH	BGEED	Membre	620-58-97-65	<i>Sanoh</i>
15	Ibrahima Sory CAMARA	Direction Nationale de l'Hydraulique	Membre	628-28-53-00	<i>Camara</i>
16	Dr Youssoussa KOITA	Conseiller du Ministre des Transports	Membre	622 201084	<i>Koita</i>
17	Mamadou Bobo BAH	Direction Nationale Décentralisation	Membre	622-34-36-64	<i>Bah</i>
18	Mamadou CAMARA	Direction Centrale Sécurité Publique/MS	Membre	664-35-30-06/622-21-92-60	<i>Camara</i>
19	Bafodé DOUKOURE	PUAS/MMG	Membre	657-40-16-94	<i>Doukoure</i>

Conakry , le 14 Septembre 2016