

**Emirates Global Aluminium (EGA) Mining and Refining  
Guinea Alumina Corporation (GAC)**

**TIOULADIWOL RIVER DAM  
Resettlement Action Plan**

September 2017

**Revision 2**





# TIOULADIWOL RIVER DAM

## Resettlement Action Plan

### TABLE OF CONTENTS

TABLE OF CONTENTS .....	i
List of Figures .....	ii
List of Tables .....	ii
ACRONYMS.....	v
CONTRIBUTORS.....	vii
1.    INTRODUCTION.....	1
1.1    Scope and Purpose .....	1
2.    LEGAL AND INSTITUTIONAL BACKGROUND .....	1
2.1    Overall Project Legal Framework .....	1
2.2    Institutional Framework and Current Practice .....	2
3.    PROJECT IMPACTS .....	3
3.1    Overview .....	3
3.2    Impacts and Minimisation.....	4
4.    SOCIO-ECONOMIC BASELINE .....	9
4.1    General Area.....	9
4.2    Resettlement Area.....	10
4.3    Livelihoods .....	10
5.    COMPENSATION STRATEGY AND ENTITLEMENTS .....	14
5.1    Key Principles .....	14
5.2    Eligibility & Entitlements .....	15
5.3    Entitlement Matrix.....	16
5.4    Compensation .....	18
5.4.1    Agricultural Land for Annual Crops .....	18
5.4.2    Agricultural Land for Perennial Crops .....	19
5.4.3    Community Compensation .....	22
5.4.4    Temporary Employment.....	23
6.    LIVELIHOOD RESTORATION SUPPORT .....	24
6.1    Livelihood restoration programs.....	24

6.2	Livelihood restoration monitoring and evaluation .....	25
7.	VULNERABLE PEOPLE .....	25
8.	RESETTLEMENT PROCESS AND ENGAGEMENT .....	26
8.1	Introduction.....	26
8.2	Resettlement Engagement and Survey Activities .....	26
8.3	Grievance Management.....	27
9.	IMPLEMENTATION .....	27
9.1	Delivery Arrangements .....	27
9.2	Organisational Arrangements, Roles and Responsibilities.....	28
9.3	Budget .....	29
10.	IMPLEMENTATION SCHEDULE .....	31
	ANNEX 1. CONSULTATION RECORDS.....	33
	ANNEX 2 - REGISTER OF CONSULTATIONS.....	48

*LIST OF FIGURES*

Figure 1.	Project Footprint .....	3
Figure 2.	Location of Affected Villages Relative to the Dam.....	4
Figure 3.	Inundation Zone and Construction Limit - Sinthiourou Tiouladi.....	5
Figure 4.	A View of the Footprint .....	6
Figure 5.	Distribution of Household Income by Sector .....	11
Figure 6.	Project Footprint and Location of Replacement Land .....	18
Figure 7.	RAP Implementation Schedule.....	32

*LIST OF TABLES*

Table 1.	Changes in Tiouladiwol Dam Characteristics 2006 vs 2016.....	4
Table 2.	Totals of Affected Land and PAHs.....	7
Table 3.	Summary of Impacts and Proposed Mitigation Measures.....	8
Table 4.	Breakdown of PAHs/PAPs by Village .....	10
Table 5.	Gender Division of Labor.....	14

Table 6. Entitlement Matrix .....	16
Table 7. Establishment of Replacement Oil Palm Plantations .....	21
Table 8. Compensation Rates – Perennial Crops .....	22
Table 9. Average Cost per Hectare of Existing Palm Plantation Project (3 years).....	23
Table 10. Cash Compensation for Loss of Palm Oil Production.....	23
Table 11. RAP Budget <sup>11</sup> .....	30



## ACRONYMS

Terminology used in this document is defined where it is first used. The following list will assist readers who may choose to review only portions of the document.

<b>GAC</b>	Guinea Alumina Corporation
<b>GIS</b>	Geographic Information System
<b>GNF</b>	Guinean Franc
<b>IFC</b>	International Finance Corporation
<b>LACRF</b>	Land Acquisition, Compensation and Resettlement Framework
<b>NTFP</b>	Non-Timber Forest Product
<b>PAP</b>	Project-Affected Person
<b>PAH</b>	Project-Affected Household
<b>PMF</b>	Probable Maximum Flood
<b>PV</b>	Procès-Verbal (minutes)
<b>RAP</b>	Resettlement Action Plan
<b>SEIA</b>	Social and Environmental Impact Assessment
<b>USD</b>	United States Dollar



## CONTRIBUTORS

ERM: Fredrik Lindblom (resettlement planning, engagement and implementation), Olivier Paquet (surveys, compensation and livelihood restoration), Jonathan Lachnit (supplementary inputs) and Chris Johnstone (review and support).

GAC representatives: Mohammed Talhaoui (Director Health, Safety, Security, Environment and Community), Tony Kneuker (Resettlement Manager) and Leah Hibbin (Resettlement Superintendent). It was revised in August and September 2017 by Basile Grosdidier (Resettlement Superintendent).

The exchange rate considered in this RAP is GNF 7,500 to USD 1.



# 1. INTRODUCTION

## 1.1 SCOPE AND PURPOSE

1. This document is the site specific (or abbreviated) Resettlement Action Plan (RAP) for the Tiouladiwol River Dam of the Guinea Alumina Corporation (GAC) Project. It addresses the land acquisition and displacement impacts related to an area along the Tiouladiwol River needed for the dam (31.9 ha) and the risk of inundation in the event of a worst-case dam failure, at the adjacent village of Sinthiourou Tiouladi. The Project footprint is situated in the locality of Parawi, (Guinea, Boké Préfecture, Sangarédi Sous-Préfecture/Commune Rurale, Boulléré District and Parawi Sector).
2. This RAP is based on the Land Acquisition, Compensation and Resettlement Framework (LACRF) prepared as a policy document by GAC and available in the public domain as part of the Social and Environmental Impact Assessment (SEIA) of the Project.
3. The LACRF sets out the principles, procedures, entitlements, eligibility criteria, and organizational arrangements that govern GAC's compensation for impacts to land. The LACRF is a part of GAC's overall commitment to plan and carry out mine construction, operations, and closure in accordance with Guinean law: the International Finance Corporation (IFC) Performance Standards on Social and Environmental Sustainability; as well as the African Developments Bank's Operational Safeguards.
4. This document therefore describes those affected by the current project, the impacts on assets and livelihoods, proposed compensation and costs, as well as the implementation schedule. Reference is made to the Dam SEIA Update (2016) and LACRF (Rev1 2016) regarding social baseline and Project context in general, and resettlement policy rules, entitlements, grievance mechanism, etc. in particular. To ensure consistency, it also draws directly from GAC's most current Resettlement Action Plan, the *Mining Infrastructure Component of the Project in Béli Kindy* RAP, which was prepared in November 2016.

## 2. LEGAL AND INSTITUTIONAL BACKGROUND

5. This section provides a summary of the relevant legal and institutional framework guiding the land acquisition process. Please refer to LACRF 2. LEGAL, REGULATORY AND INSTITUTIONAL FRAMEWORK for additional detail.

### 2.1 OVERALL PROJECT LEGAL FRAMEWORK

6. As detailed in the LACRF, the legal framework for the Project is relatively complex due to its long history. It is mainly governed by the Basic Agreement (2004) and its amendments, annexes and attachments. It recognizes that GAC will carry out land acquisition and resettlement in conformance with international best practice and establishes an obligation

upon the State to facilitate the land acquisition and resettlement process, in addition to stepping in should GAC have trouble in securing land.

## 2.2 INSTITUTIONAL FRAMEWORK AND CURRENT PRACTICE

7. Applicable Guinean legislation does not appear to allocate the responsibility for compensation and/or resettlement to a specific institution. In fact, the Land Code seems to suggest that the beneficiary of the Declaration of Public Interest, whether the State or a public or private entity, may carry out most of the expropriation process itself, as long as the Government involvement is fulfilled. A Presidential Decree issued on 19 September 2014 suspended activities of the main government entities concerned with resettlement issues at the *Préfecture* level, the Land Commission ("*commission foncière et domaniale*").
8. Resettlement planning and implementation is therefore to be managed in coordination with the Resettlement Steering Committee of the Boké *Préfecture*. However, as this committee is still in the process of being created, current practice is that the Governor of the Boké region, as well as the *Préfet* of Boké, are informed about resettlement activities. Implementation work is then coordinated with the heads of the lower levels of local government, the *Sous-Préfecture*, *Commune Rurale*, *District*, and specifically with the lowest level of state administration, the *Secteur*. Customary authorities are fully respected throughout the resettlement process and in all consultation meetings with impacted communities.
9. It should be noted that there is no physical displacement or resettlement that will be triggered by construction of the Tiouladiwol Dam and associated structures – including the Tiouladiwol Dam Water Pipeline and Access Road which is the subject of a separate abbreviated RAP. The Dam SEIA Update (July 2016) interpreted existing photo imagery to conduct a desk-top analysis modeling a dam breach to delineate the low-, medium-, and high-risk zones of a PMF (Probable Maximum Flood). The analysis concluded that 14 houses in the village of Sinthiourou Tiouladi would need to be relocated because they fell within the “high” and/or “medium” Risk Zone of a PMF.
10. However, subsequent in-the-field ground-truthing to validate these results showed that the desk-top interpretation of the location of the 14 houses relative to the limits of the PMF were slightly off. The final conclusion is that no structures in Sinthiourou Tiouladi – residential or otherwise – need to be relocated. (see Figure 2, below).

### 3. PROJECT IMPACTS

#### 3.1 OVERVIEW

11. The affected area (reservoir and dam wall construction clearance) comprises 31.9 hectares of mostly fallow and bush land equally divided between upland slopes (15.9 ha of *djolol* land) and fertile bottomland (16 ha of *n'dantari* land); as well as wild palm trees located along the Tiouladiwol River between the villages of Parawi to the north west, Sinthiourou Tiouladi to the south west, and Mobhi Kansihi to the east in the District of Boulléré, Sous-Préfecture of Sangarédi. In addition, the village of Sinthiourou Tiouladi is impacted by virtue of its location on the edge of the probable maximum flood (PMF) zone and the resulting restrictions on new construction on one side of the community.

**Figure 1. Project Footprint**

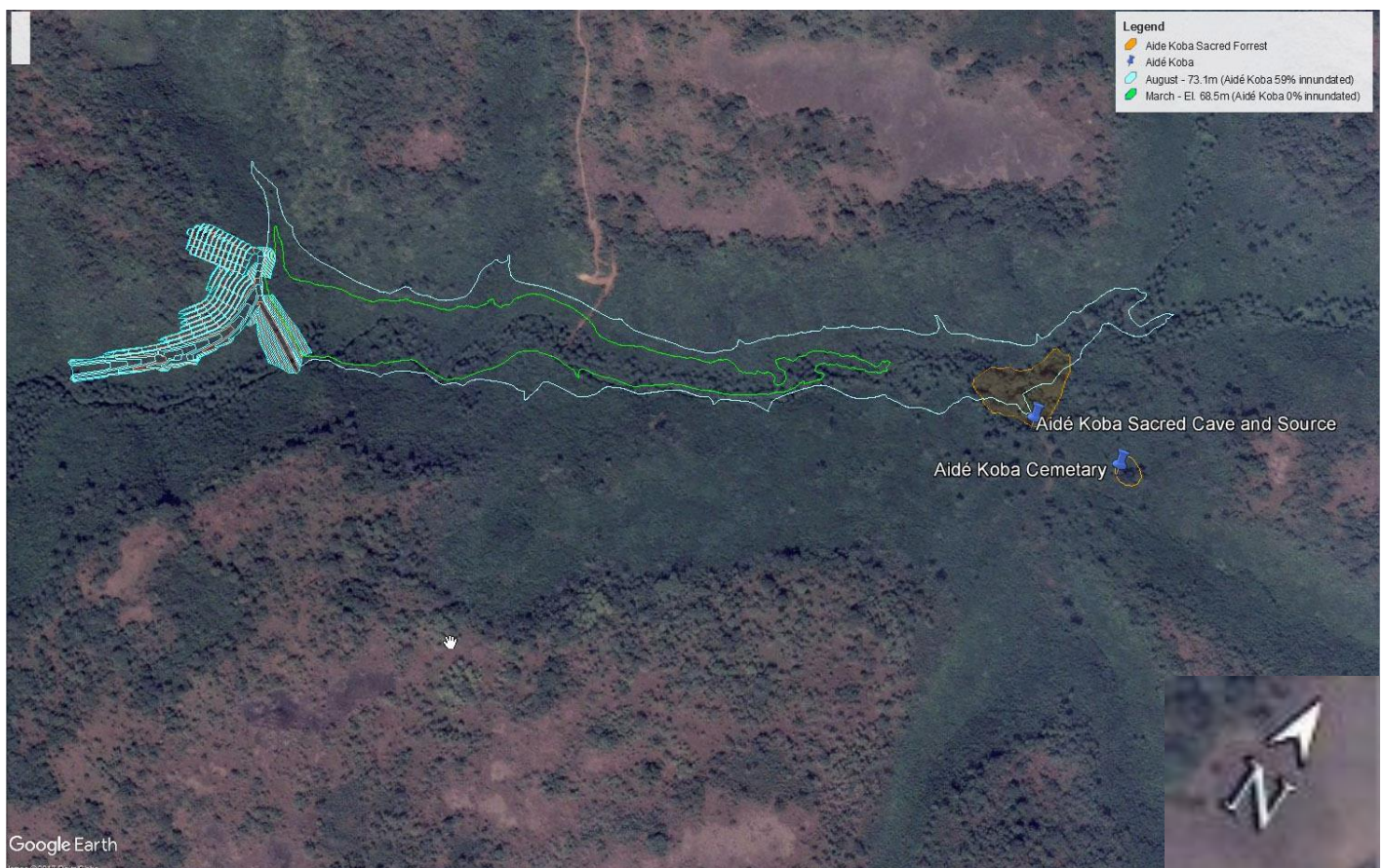
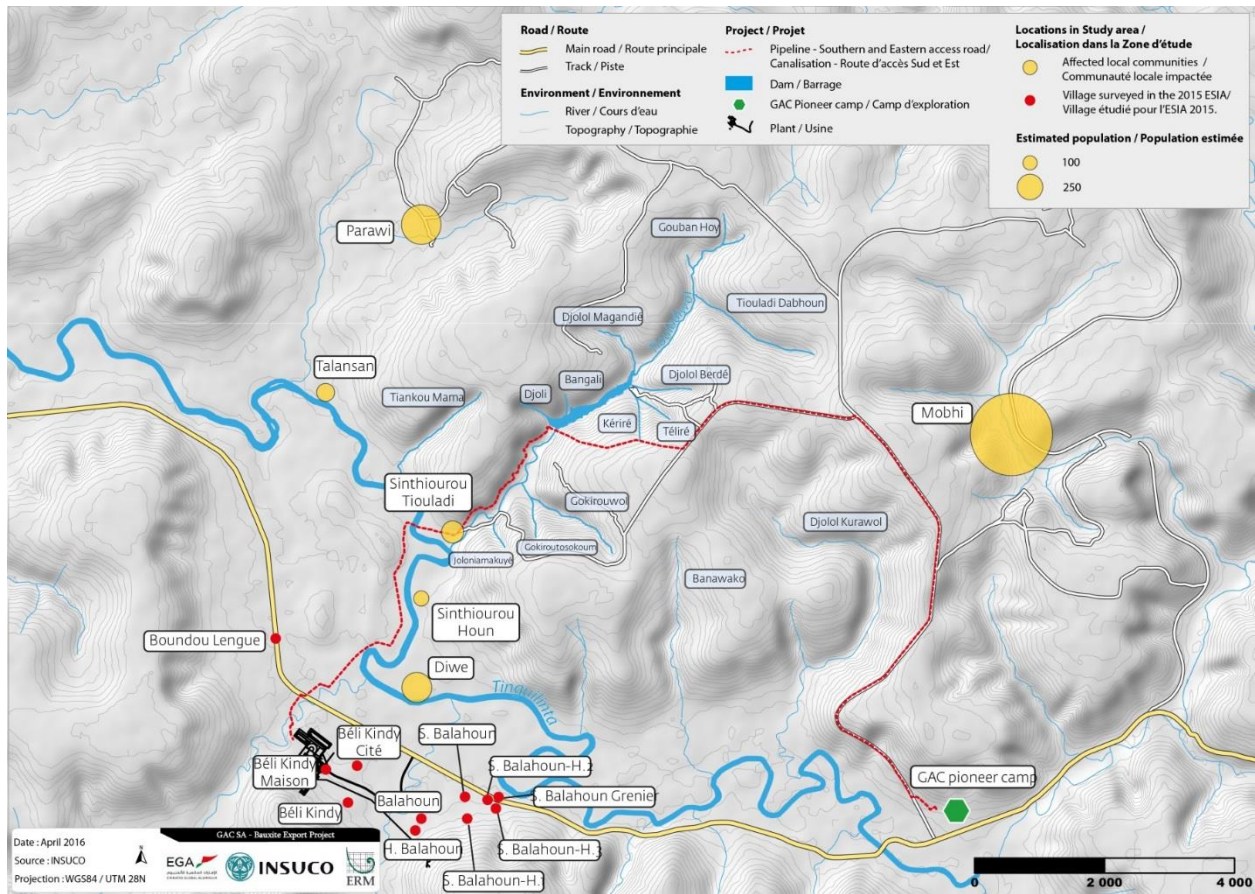


Figure 2. Location of Affected Villages Relative to the Dam



### 3.2 IMPACTS AND MINIMISATION

12. The dam and reservoir were initially studied by GAC and authorized for construction by the Guinean Ministries in 2006, which required resettlement of the village of Sinthiourou Tiouladi. The location of the dam on the Tiouladiwol River has not changed but the projected size of the associated water reservoir (water height and footprint of the reservoir) has been significantly downsized and thus impact minimized.

Table 1. Changes in Tiouladiwol Dam Characteristics 2006 vs 2016

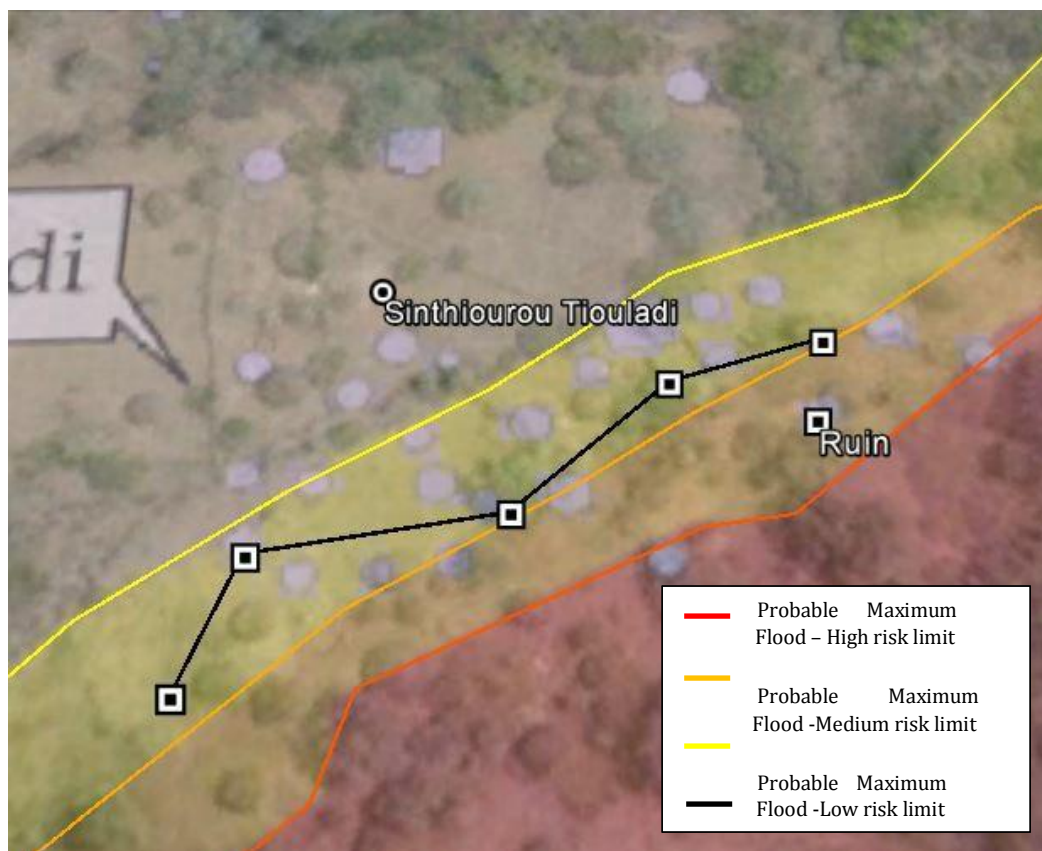
Characteristics	2006	2016
Dam height (m)	40	14
Reservoir area (ha)	739	20
Reservoir capacity (m <sup>3</sup> )	5,000,000	750,000

13. Nevertheless, the PMF restricts expansion of the village of Sinthiourou Tiouladi located 3 km downstream. Although this will not result in physical displacement (all current dwellings are

outside the medium to high risk area), no future dwellings may be constructed in the area between the current village and the river. As all economic activities can continue in the area, no further impacts are foreseen. As will be discussed later, the village of Sinthiourou Tiouladi was consulted on the type of communal compensation they would receive for accepting this permanent restriction on building within the High and Medium Risk Zones of a PMF.

14. Figure 3 shows the line of dwelling and household structures closest to the river. The only structure within the PMF medium (orange) to high (red) risk area, is a ruin. The risk of new constructions being built within the PMF is assessed to be very small. Indeed, during latter consultations, the villagers of Sinthiourou Thiouladji explained that they had renounced to build additional structures closest to the Tiouladiwol or Tinguilinta rivers since the large floodings of 2004.
15. The mitigation of risk of dam failure and flooding will be managed by an alarm system being installed at the dam site. The dam operators will activate the alarm if any risk of failure is assessed. The villagers of Sinthiourou Thiouladji will receive a specific training about the flooding risk and its mitigation measures by the Health and Safety Department of GAC. A refresh training will be organised every 6 months.

**Figure 3. Inundation Zone and Construction Limit - Sinthiourou Tiouladi**



16. With regard to the dam footprint (reservoir and dam wall construction clearance area), there are no settlements or social infrastructure. However, in the river basin within the footprint, there are a large number of wild palm trees (*Elaes guinensis*) and a smaller number of fruit trees (mango, guava and cashew). On the slopes on the sides of the river, there is bush and fallow land (part of the overall rotation system) with no specific assets except for scattered palm and fruit trees. No other assets are located within the footprint except a small number of old and partly ruined rudimentary troughs located along tracks that have been used to mix food and water for cattle.
17. During the 2016 Dam SEIA Update, a sacred forest (*Aidé Koba*) at risk of being partially inundated during several months of the year was identified. This forest also includes a spring and cave important for the communities, and there is a cemetery in close proximity. The spring, the cave and the cemetery are outside of the reservoir area and will not be inundated at any time. Agreement was reached with the communities for the proper sacrifice to do for the loss of a part of the sacred forest. No other issues were detected during the 2016 field surveys, notably related to biodiversity. Therefore, contracts were awarded for construction of the dam and access roads during the first quarter of 2017.

Figure 4 below provides an indication of the topography and characteristic of the footprint.

**Figure 4. A view of the footprint**



18. One hundred and thirty-three Project Affected Households (PAH) from the villages of Parawi, Sinthiourou Tiouladi and Mobhi Kansihi are economically displaced as they own and /or derive part of their livelihoods from affected assets in the footprint of the dam and the reservoir. Two traditional landholders and three private owners of fruit trees are directly impacted. PAHs from the mentioned three communities are also impacted with regards to the use of agricultural land, the use of wild palm trees for the extraction/selling of oil, use of other fruit trees, as well as to a very limited degree the extraction of other NTFP, hunting and grazing.

19. Although considered as high value agricultural land (*"djolol"*), no land in the river basin or on the slopes along the river is currently being cultivated, and thus is not currently allocated to any specific customary land users. It is laying fallow. However, as part of the land rotation system, the fallow land would have been allocated to community members for planting when it was considered ready to produce. Fruit trees are either privately or community owned, while all palm trees (which are wild, not planted) are considered community property and are used by groups of women from the above mentioned three communities.
20. Transhumant herders occasionally use parts of the land for grazing, and community members use the area to a limited extent for hunting or to extract other resources. The impact of these activities is considered insignificant as such activities can continue unhindered in other adjacent unaffected areas.
21. Table 2 summarizes key indicators of Project displacement impacts on land, assets and households.

**Table 2. Totals of Affected Land and PAHs**

<i>"Djolo!"</i> (upland slopes) affected:	15.9 ha	
<i>"N'dantari"</i> (heavily forested bottom lands) affected:	16 ha	
<b>TOTAL LAND AREA AFFECTED:</b>	31.9 ha	
Economically Displaced PAHs: Owners	3	[1]
Economically Displaced PAHs: Users - Agriculture	63	[2]
Economically Displaced PAHs: Users - Oil Palms (and other fruit trees)	133	[3]
Total of Economically Displaced PAHs	133	[4]
Number of Affected Wild Palm Trees	2,534	
Number of Other Affected Fruit Trees (mango, guava, cashew)	103	

<sup>1</sup> Those 3 PAH are owners of fruit trees planted on Community land.

<sup>2</sup> Estimate from 2016 SEIA and 2005 RAP data and surveys (i.e. All HH from Parawi + 20 HH from Mobhi Kansihi). Those are farmers using the Community land to grow rain fed staples.

<sup>3</sup> All households of Parawi, Sinthiourou Tiouladi and Mobhi Kansihi are economically impacted by the loss of palm trees because wild palm trees ("trees of god") are a communal resource.

<sup>4</sup> Agriculture and palm oil are different impacts on the same households. In other words, the 63 HHs affected as Agricultural "Users" and the 3 "Owners" are a subset of the 133 HHs affected as Oil Palm "Users".

**Table 3. Summary of Impacts and Proposed Mitigation Measures**

IMPACT				PROPOSED LIVELIHOOD RESTORATION ACTIVITY	RISKS AND CONSTRAINTS
ECONOMIC DISPLACEMENT					
Type of Land	Affected Activity or Crop	Level of Impact	Affected Persons		
N'dantari Low-land (Bas-fonds)	2534 wild palm trees		All women in the 3 affected villages	Replacement palm tree plantations (long term subsistence and income):  <i>Phase 1 started - 10 ha of replacement plantations planted</i>	No major risks identified - requires community cohesion  GAC has successful experience in the area to draw upon
	<i>subsistence and cash crop</i>	+++	133 PAHs who are "Users"	Garden intercropping in palm plantations (short term subsistence and income):  <i>Started</i>	No major risks identified
				Identification of mid- and long-term Income Generating Activities (IGA)  to be implemented through Economic Interest Groupings (EIG)  <i>To date 6 EIGs are active</i>	<ul style="list-style-type: none"> <li>No major risks identified during support by GAC</li> <li>Major challenge is to ensure long-term sustainability of the activity</li> </ul>
	small scale gardening	+	Relatively small number of women (exact number to be determined)	Market gardening (linked with IGA above, to limit number of programs and groupings)  <i>To date 6 EIGs are active</i>	<ul style="list-style-type: none"> <li>Identify and secure suitable land</li> <li>Deal with risks faced by all ag. projects: (pests, weather hazards, etc.)</li> <li>Access to markets</li> </ul>
"Djolol" Rain-fed Upland Slopes	rainfed rice on a slash and burn rotation system	++	See table with the gender division of labour  (63 PAHs)	Agroforestry - surveys and then programs to improve productivity of hillsides without using traditional "slash and burn" practices:  <i>Feasibility study to be launched</i>	<ul style="list-style-type: none"> <li>Feasibility/availability of knowledge in Guinea to implement such survey and programs Acceptance by PAPs</li> <li>Adoption of radically different techniques</li> </ul>

IMPACT				PROPOSED LIVELIHOOD RESTORATION ACTIVITY	RISKS AND CONSTRAINTS
ECONOMIC DISPLACEMENT					
Type of Land	Affected Activity or Crop	Level of Impact	Affected Persons		
				Irrigated rice in <i>n'dantari</i> areas (Pétel Kiendi if available):  <i>Land lords and former users have been contacted</i>	<ul style="list-style-type: none"> <li>• Availability of suitable land</li> <li>• Access to the identified land of Pétel Kiendi</li> <li>• Adoption by farmers of new farming practices (irrigation)</li> </ul>
	hunting subsistence	-	Relatively small number of men; declining activity	None. PAPs in affected communities have access to other lands for hunting	NA
	wood collection subsistence and cash	-	women	IGA (see above)	NA
	charcoal cash	-	young men	other above activities (agroforestry and irrigated rice)	NA
	fishing subsistence	-	Practiced by few men and women  Small contribution to livelihoods	Complete a Study on feasibility of fish farming in the reservoir  <i>Feasibility study to be implemented</i>	<ul style="list-style-type: none"> <li>• Feasibility</li> <li>• Adoption of fish farming techniques</li> </ul>

## 4. SOCIO-ECONOMIC BASELINE

### 4.1 GENERAL AREA

22. Comprehensive socio-economic baseline data for the area, including the villages of Mobhi Kansihi, Parawi (and nearby hamlets) and Sinthiourou Tiouladi which are the object of this RAP, as well as five additional villages in the greater area (Talansan, Sinthiourou Houn, Diwé, Mobhi Gnouthioun and Mobhi N'Dantari), is presented in detail in the Dam SEIA Update: 9 SOCIAL IMPACTS ASSESSMENT. However, some relevant details from that study will be presented in this RAP to highlight the socio-economic and cultural context in which the Tiouladiwol Dam will be constructed; and to justify the proposed livelihood restoration approach presented.

## 4.2 RESETTLEMENT AREA

23. The total of 133 households (HHs) will be economically displaced as a result of the dam. The following table shows the breakdown of where these PAHs are located:

**Table 4. Breakdown of PAHs/PAPs by Village**

VILLAGE	PAHs	PAPs
Sinthiourou Tiouladi <sup>1</sup>	20	96
Parawi <sup>2</sup>	43	299
Mobhi Kansihi <sup>3</sup>	70	490
<b>TOTAL</b>	<b>133</b>	<b>885</b>

<sup>1</sup> Census done in the field 16<sup>th</sup> of December 2016

<sup>2</sup> Estimated from population census of Parawi (299 ind.) - Ref. SEIA section 7.4.1.2

<sup>3</sup> Estimated from population census of Mobhi Kansihi (490 ind.) - Ref. SEIA section 7.4.1.2

24. The major impact to these PAHs is loss of access to communal assets, with wild oil palms having far and away the most significant impact on livelihoods. In addition, 3 households are impacted by the loss of privately owned productive assets, namely fruit trees.
25. All of these households belong to the Peul ethnic group – or other ethnic groups who have adopted the Peul language, customs, and culture over the preceding 300 years. Village territories are composed of the village itself and croplands localized outside the village, which are property of the villages’ founding lineages. Apart from the inhabitants of Sinthiourou Tiouladi and Diwé who are relatively new settlers, more than 90% of PAHs are descended from the original ancestors who moved into this area in the early 18<sup>th</sup> century from the theocratic Imamate of the Fouta Djallon centred around Timbo in the Guinean Highlands. The other 10% have moved into the area within the last 10 years. The land in the footprint is owned by 2 lineages: half the land by a lineage from the village of Mobhi Kansihi and the other half by lineage from the village of Parawi (which traditionally was settled by families from Mobhi Kansihi). While three members of the Parawi community own some fruit trees (planted by them), the majority of fruit trees and all palm trees are considered communal assets by the communities and their customary authorities (including mentioned landowners).

## 4.3 LIVELIHOODS

26. Overall, according to the Dam SEIA Update (July 2017) people in the Study Area on average live on a Purchasing Power Parity of 1.51 USD/day/per person. That is below the Poverty Line of PPP 1.90 USD/day/per person established by the World Bank. Overall, ¾ of the households live on less than 15,000,000 GNF/yr./HH – or 1,965 USD/yr./HH at an exchange rate of 1 USD = 7,634 GNF. Less than 5% of HHs have an annual income that exceeds 30,000,000 GNF.
27. The main livelihood activities of PAHs in the affected villages are slash and burn subsistence agriculture on the slopes (with rotation cycles varying in length between 5 – 7 years according to soil quality); market gardening; and exploitation of perennial crops – both planted and wild - in the valley bottomlands (oil palms) and small pockets of flat, fertile land on the bauxite

plateau (cashews). Palm oil production is seasonal and carried out by women; some natural resource gathering (mainly fruit, roots and charcoal); small-scale livestock farming; and cashew tree production is a growing income source. Male and female community members practice fishing – albeit in different seasons - in the Tinguilinta River and its tributaries, as well as in the smaller Tiouladiwol River to a much lesser extent. Fishing is a small piece of the livelihood puzzle that does not make a significant contribution to the livelihoods of PAHs.

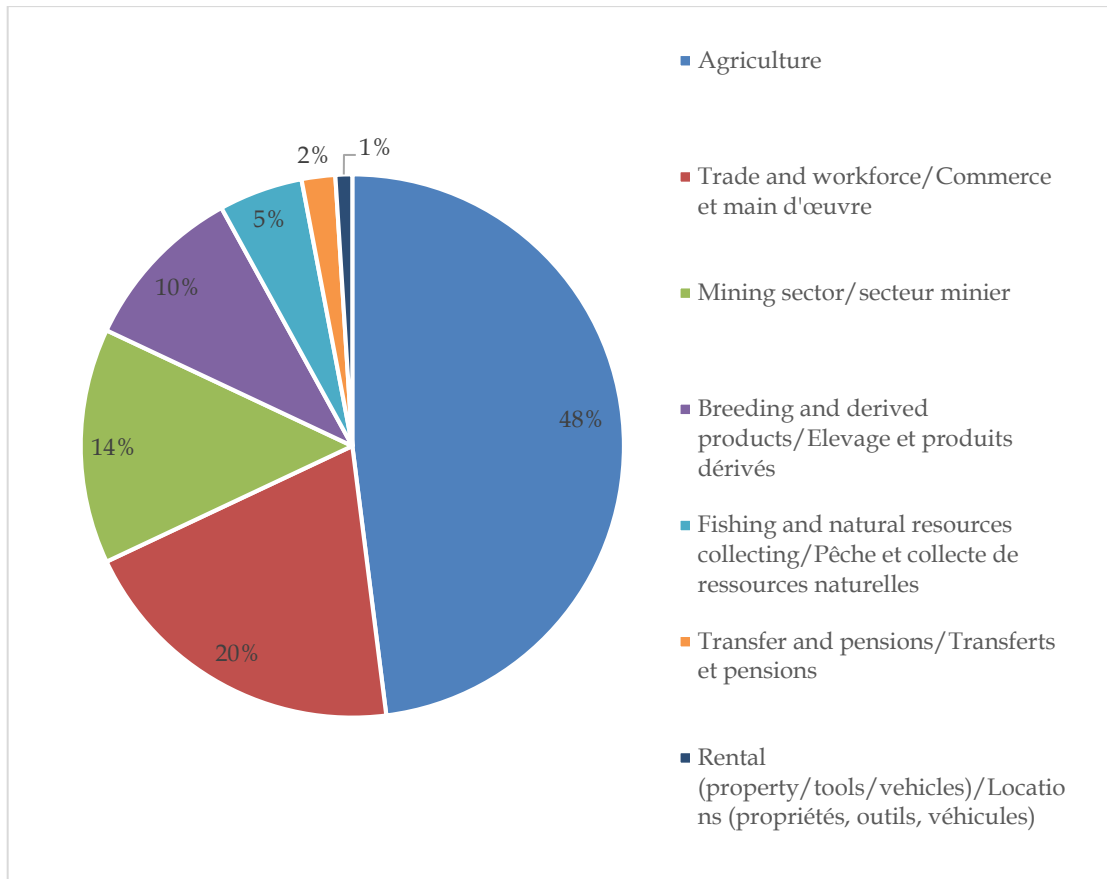
28. Hunting, while still occurring, has been a declining source of protein and income for years as the number of animal's decline, and legal restrictions - though largely ignored - are imposed on the hunting of specific animals. The cutting of timber is highly regulated in the area, and is no longer harvested. The collection of NTFP makes only a relatively small contribution to livelihoods.
29. In general, access to grazing lands should not be impacted, or only slightly affected. While a definitive study has not been done, anecdotal evidence shows that cattle and ruminants are generally not grazed on *djolol* land (upland slopes) or *n'dantari* land (bottomland), which is the overwhelming types of land affected by the Dam. Animals are grazed mainly on *hunsiré* land (small flat, fertile surfaces on the bauxite plateaux, or hilltops) and the *bowé*<sup>1</sup> (rocky outcrops on the bauxite plateaux). Occasionally animals might be opportunistically grazed on *djolol* land that is fallow, or after the harvest has been collected. During the second quarter of 2018<sup>2</sup>, GAC will conduct some focus group consultations to better understand the impact Dam construction – and the attendant loss of *djolol* and *n'dantari* land - will have on grazing patterns in the area.

---

<sup>1</sup> *Bowé* is the plural of *bowal*. This rocky plateau formation is so characteristic of the geological system where bauxite is found that the area is known in Guinea as the *bowé* region.

<sup>2</sup> Those focus groups cannot be held during the first quarter of 2018 since herders are very mobile during the height of the dry season.

**Figure 5. Distribution of Household Income by Sector**



30. Over 58% of PAHs report “agriculture” as their primary activity, and as can be seen in Figure 5, above, agriculture generates fully 48% of total household income, with 60% of that coming from perennial crops. The production, consumption and sale of palm oil brings in 12% of total household agricultural income, behind other fruits (14%), and cashews (19% and growing) in terms of perennial crops; and behind rice (17%), and vegetables (15%), and about even with grains and tubers (12%) and peanuts and groundnuts (12%).
31. Income generated from trade, commerce, and/or selling labor comes in a distance second at 20%; followed by mining sector at 14%; animal husbandry at 10%; and income generated from fishing and collection of other natural resources, including NTFP, at only 5%. This makes sense as no PAH reported “fishing” as either their primary, secondary, or tertiary source of income.
32. Formal employment remains of little significance with less than 2% of PAPs surveyed having a salaried job, even though “mining” generates on average 14% of household income. This is due to the outsize salary received relative to income from agricultural activities. GAC and its contractors provide temporary work opportunities and all unskilled positions are occupied by PAPs while they are given priority for skilled labour, when skills are equal. Nevertheless, the expectations in terms of employment are always much more important than the jobs available.
33. The Dam SEIA Update says the land impacted by the dam is about equally split between *djolol* (upland slopes), which is the most important type of land for annual crops (rain-fed rice;

groundnuts; grains); and *n'dantari* (valley bottomlands) where dense vegetation of palm trees and other fruit trees grow. However, the current breakdown is closer to 1/3 *n'dantari* and 2/3 *djolol*. Part of the slopes are rocky (named *donghol*) and not suitable for agriculture. These areas are used by livestock during the rainy season and to some extent for the collection of non-timber forest products (NTFP).

34. The normal farming cycle includes clearing natural vegetation and sowing upland rainfed rice, fonio, or groundnuts. Rice is dominant. According to the 2016 SEIA, farmers in the area work the land with fallow period of 5 to 7 years and thus require 5 to 7 times more total land area than what is actually farmed in any given year. Farmers tend to value the size of the *djolol* land, more than the fertility of the soil. The duration of the fallow period tends to decrease as the population density increases.
35. Both men and women are involved in household livelihoods with well-defined gender roles and responsibilities (see Table 5, below). Women tend, however, to be marginalized in terms of land access, so GAC will pay specific attention to ensure fair distribution of entitlements during both the payment of in-cash compensation, and implementation of in-kind livelihood restoration activities.
36. While not yet a written document, GAC is implementing a *de facto* gender strategy of empowering woman through implementation of livelihood restoration activities, and the Economic Interest Groupings (EIG). Since women are disproportionately impacted, they are also disproportionately the focus of livelihood restoration efforts, comprising 99% of the members of the Community Palm Plantation Grouping. Women are also expected to predominate in other Economic Interest Groupings as they are identified. Never-the-less, GAC is committed to developing a written Gender Strategy.
37. Project land acquisition will reduce the land available for some livelihood activities discussed above, but in many cases only slightly compared to areas that remain unaffected by GAC activities where these livelihood activities can still be carried out. Where land acquisition will have a greater impact – such as the loss of high-value upland slopes and fertile bottomlands - community based compensation and livelihood restoration efforts will focus on recreating the lucrative palm oil plantations (already begun with the first oil palms planted on 10 ha of new plantations in July, 2017); developing land at *Pétel Kiendi* for more intensive irrigated agriculture; undertake a study to identify and introduce new agricultural and agro-forestry practices to improve yields on a sustainable basis to enhance food security; and study the possibility of introducing fish farming in the dam lake, as well as exploring other possibilities for “monetizing” the reservoir while protecting and restoring the environment.

**Table 5. Gender Division of Labor**

Crops	Activities	Female (%)	Male (%)	Children
Rice	Clearing and burning		100%	
	Plow	20%	80%	
	Sowing	80%	20%	
	Weeding	90%	10%	
	Guarding		10%	90%
	Harvest	50%	50%	
	Selling Rice	80%	20%	
Market Gardening	Clearing and burning		100%	
	Plow	80%	20%	
	Sowing	80%	20%	
	Weeding	80%	20%	
	Guarding	20%	10%	70%
	Selling produce from Gardening	100%		
Exploiting Palm Trees Plantations	Clearing and burning	20%	80%	
	Measurement and picketing	20%	80%	
	Digging		100%	
	Planting	20%	80%	
	Weeding	80%	20%	
	Guarding	10%	80%	10%
	Harvest	80%	10%	10%
	Picking	50%	40%	10%
	Extracting Palm oil	100%		
	Selling Palm Oil	100%		
	Selling oil palm nuts		100%	

## 5. COMPENSATION STRATEGY AND ENTITLEMENTS

### 5.1 KEY PRINCIPLES

38. Project specific key principles include the following:

- As rural land is considered property of the State of Guinea, individual customary landowners cannot be compensated in cash. However, as customary land rights are taken into account, customary landowners are eligible for in-kind compensation, including GAC facilitating working with the lineages to identify potential replacement land for agricultural-based livelihood restoration support.
- Lineages are the eligible entities entitled for in-kind land replacement. Due to the complexity and overlapping levels of customary land ownership (i.e. families and extended lineages), the

recognition of lineage land rights to land will ensure that the pre- Project land tenure situation is preserved. This is also the case for impacted usage rights, which will be restored on the replacement land, ensuring that land users can restore livelihoods.

39. Other key principles that GAC is committed to with regard to resettlement and compensation are listed in the LACRF 3. LAND ACCESS AND RESETTLEMENT PROCESS.

## 5.2 ELIGIBILITY & ENTITLEMENTS

40. An eligibility and entitlement cut-off date was set in the community meeting in Parawi; 15th of December 2016. Minutes of this meeting are presented in Annex 1.
41. GAC will support the identification and the development of replacement agricultural land to the benefit of both customary landowners and land users. Lineage will continue to allow users to farm the land and will thus uphold current customary practices on the replacement land.
42. Compensation for the loss of use of resources on lineage owned land, such as wild oil palm and fruit trees, cultivation of annual crops, timber or NTFP, fishing, hunting and grazing, will be provided to the community in general through a number of community projects.
43. In-kind compensation for the loss of wild palm and fruit trees will be provided through the creation of new plantations downstream from the dam in an area owned by the same lineages (first 10 ha of new plantations planted in July 2017 on a total objective of 17.8 ha). In-cash compensation will be provided to female oil palm producers for loss of revenue until the new plantations becomes productive (approx. 3 years after the oil palm seedlings are planted). In-cash compensation for privately owned fruit trees that are impacted will also be paid to owners of the asset. It should also be noted that the impact from the loss of access to communal oil palm trees will not be felt until 2018 when the reservoir begins to fill.
44. Land in *Pétel Kiendi* will be studied to ascertain if it can be developed for intensive irrigated agriculture – especially rice cultivation where the yields are expected to be double those achieved on the upland rain-fed slopes (1800 kg/ha vs 900 kg/ha).
45. Several additional Economic Interest Groupings will be formed and supported by GAC once feasible income generating activities have been identified and studied.
46. Compensation for restrictions on new construction in the “high” and “medium” risk zones of the PMF in Sinthiourou Tiouladi will be compensated through a community project identified by the village. Following consultations with the community, it was agreed that the in-kind compensation directly related to the new building restrictions is guaranteed usage of the Tiouladiwol Dam Pipeline maintenance road and a permanent access road connecting to it. Since the community is relatively isolated, they felt this agreement was in the community’s overall, long-term best interest as access to markets and health care, among other things, is significantly improved. It should also be noted that the village can still expand outward in other directions, just not towards the river.

### 5.3 ENTITLEMENT MATRIX

**Table 6. Entitlement Matrix**

#	Affected Asset	Affected Entity	Eligibility Conditions	Entitlements
1	Agricultural land (including fallow agricultural land)	Lineage (customary ownership)	Consensus on boundaries of lineage rights (i.e. communities of Parawi, Mobhi Kansihi and Sinthiourou Tiouladi)	<b><u>IN-KIND: Support the development of new agricultural land of equal total potential.</u></b> In this case approx. 70 ha of land in <i>Pétel Kiendi</i> that will be improved. The large number of ha to be improved will provide replacement ag. land for several components of the GAC project, and not just to compensate for the loss of land due to construction of the Dam.
		Community (customary usufruct)	Consensus on boundaries of community rights (See above)	<b><u>IN-KIND: Livelihood Restoration Support</u></b> through participation in technical assistance programs to improve agricultural skills AND Access to replacement land identified in consultation with the lineage (see above)
2	Bush land - Savannah (Pasture, hunting & fishing grounds, timber and NTFP products)	Community (customary usufruct)	Consensus on boundaries of community rights (See above)	<b><u>IN-KIND: Community compensation</u></b> discussed with Council of Elders and community
3	Perennial crops (fruit trees, and palm trees)	Owner of perennial crop (individual)	Be found at the time of the survey to own an affected perennial crop	<b><u>IN-CASH: Compensation at replacement value</u></b> total loss of income over the whole period required to re-establish the tree to the same level of production
		Community (customary ownership)	Consensus within lineages that affected asset is communal	<b><u>IN-KIND: Community compensation</u></b> discussed with Council of Elders and community. In this case compensated through creation of 18 ha of new replacement palm tree plantations on land identified by the lineage downstream of the dam. This will compensate for loss of access to palm trees from the Dam and the Pipeline.
		Women exploiting community wild palm trees for producing red oil (customary usufruct)	Consensus within affected lineages, communities and women associations on the users entitled for compensation (entitled women may come from other villages)	<b><u>IN-CASH:</u></b> In addition to the right to use the above mentioned new replacement palm tree plantations, <b><u>Cash compensation</u></b> equivalent to loss of revenue during the period required before the replacement oil palm trees become productive (approx. 3 years)

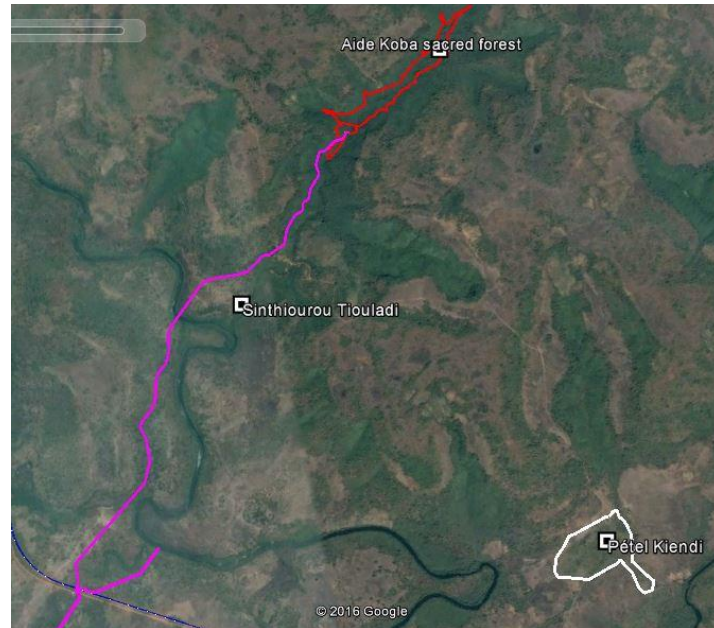
#	Affected Asset	Affected Entity	Eligibility Conditions	Entitlements
4	Access to fishing and fishing based livelihoods (during construction)	Community (customary usufruct)	Consensus on boundaries of community rights (with confirmation from adjacent villages where relevant)	<b>IN-KIND: Livelihood Restoration Support</b> through participation in technical assistance program to improve agricultural skills. Gains in other enhanced livelihood activities (irrigated rice production, monetization of the dam reservoir, improved oil palm extraction/production, etc.) will off-set losses in other areas (fishing in the Tiouladiwol River, collection of NTFP, etc.). This will be closely monitored.
5	Restriction on constructing dwellings between village and river	Community of Sinthiourou Tiouladi	Be found at the time of the survey to be a member of Sinthiourou Tiouladji community	<b>IN-KIND: Community compensation</b> discussed with Council of Elders and community. In this case compensated through right of usage of future pipeline maintenance road and a permanent access road connecting to it as negotiated with the community.
6	<i>Aidé Koba</i> Sacred Forest	Community of Parawi	Customary authorities of Parawi, Community of Parawi	<b>IN-KIND<sup>7</sup> : Community compensation</b> discussed with Council of Elders and community.  Consult with anthropologists for proper rituals and compensation for disturbance of sacred site (see 2016 SEIA for INSUCO analysis). These consultations have been held, and agreement was reached on details of the ceremonies that needed to be held.

<sup>7</sup> Although Parawi’s Imam might be entitled to receive cash compensation, as it is usually the custom in case of disturbance of sacred sites.

## 5.4 COMPENSATION

### 5.4.1 Agricultural Land for Annual Crops

47. Compensation for replacement agricultural land takes into account the high value agricultural land (“*djolo*” and/or “*n’dantari*”) which constitutes the vast majority of impacted land. The loss of this area is a significant impact on the livelihoods of 133 PAHs from the 3 affected communities.
48. Replacement land strategies for the loss of the land were studied in 2005 when the Project to build a dam on Tiouladiwol River was first initiated. The chosen strategy was the development of 115 ha at *Pétel Kiendi* (see Figure 6 below) - flat land situated 5 km south of the reservoir. In 2005, the cost of the pre-feasibility and feasibility studies for this project was 150,000 USD, and cost of construction was based on an average cost of 7,000 USD/ ha<sup>8</sup>. In order to estimate the total cost, the rate/ha has been slightly increased to include certain loss of value (estimated at 10%), while the Project itself has been reduced to 70 ha. It should be noted that the development of 70 ha of irrigated land in *Pétel Kiendi* is to serve as replacement agricultural land for several components of the overall GAC project, and not just to mitigate the loss of agricultural land due to construction of the Tiouladiwol River Dam.
49. *Pétel Kiendi* is a fertile agricultural domain in a *n’dantari* land, near the Tinguilinta river. It is a former FAPA (Guinean kolkhoz from the time of Sékou Touré) and reaches over 115 ha. An agricultural grouping supported by GAC during the previous work for the implementation of the 2008 *Refinery RAP* previously used it. Since 2012, the land was left fallow but the grouping still owns the traditional lease until the end of 2018. The access to the domain for PAPs affected by the dam and pipelines would require the approval of both the owner family and the grouping owning the lease. The GAC livelihood restoration team has started the consultations with the different stakeholders and the Resettlement Committee will play an increasing role in the matter.

**Figure 6. Project Footprint and Location of Replacement Land**

#### 5.4.2 Agricultural Land for Perennial Crops

50. In-Kind Compensation: Working thru the affected lineages, GAC facilitated the identification of land appropriate for planting new oil palm plantations to compensate the communities of Sinthiourou Tiouladi, Parawi, and Mobhi Kansihi. These plantations are in close proximity to the affected communities, and will be created over a period of 4 years, starting in 2017. This year, more than 1,400 palm trees were planted on 10 ha of land divided into 4 separate plantations. In 2018, an additional 850 palm trees will be planted on an additional 6 ha. A total of nearly 18 ha will have been planted by the time the Project is completed. These 18 ha will compensate for the loss of not only the trees lost to construction of the Tiouladiwol Dam, but also to construction of the Dam Water Pipeline – the subject of a separate RAP. (see Table 7, below)
51. The replacement plantation land was negotiated by the affected Communities directly with their own traditional landowners: the Bah family of Mobhi granted the farmlands of *Mobhi Fétoré*, *Djolol Kouradjé* and *Sinthiourou Thiouladji* and the customary chief of the Diallo family granted the farmland of Parawi. The first three domains were old fallow assessed to be around 10 years old (used in a slash and burn rotation system) while the domain of Parawi was rather a 5 years old fallow. It should be noted that the negotiation for the palm plantation of Sinthiourou Thiouladji required the intervention of GAC Livelihood Restoration team since the inhabitants of this village are relatively new comers in the area (Dam SEIA, 2016) and as such, do not have traditional links to the landowner families. The Communities considered that nobody was affected by the development of the new plantations. Following the process of identification and validation of the parcels by the different stakeholders, a letter of agreement was signed between the landowner, the village authorities and the women groups,

authorizing the realization of the plantations and the freedom of access to each woman of the Community.

52. In-Cash Compensation: Calculation of full replacement value requires consideration of not only the product of the crop over one year, but also the cost of re-establishing the crop (seedlings, soil preparation, fertilizers, others), as well as the income lost during the period needed to re-establish the crop. Owners of privately owned individual trees will receive cash compensation for the tree as well as the value of lost production. Users of community owned trees are entitled to cash compensation equal to the lost value of production. When possible, the compensation will be paid in several instalments to enhance livelihood restoration and minimize the risks of cash misuse. The experience from compensation in Béli Kiendi Sector (Béli Kiendi RAP) shows that PAPs usually refuse instalments in spite of GAC's compensation team advices. Although several instalments will always be favoured, the final decision will be taken by the PAP. Compensation rates for perennial trees<sup>9</sup> is presented below in Table 8.
53. The compensation rate is based on the theoretical production of all impacted wild palm trees in the reservoir footprint. Young productive palm tree produces an average of 6 litres per year and adult palm tree produces an average of 10 litres per year. The average price per litre of oil (12,000 GNF) is based on market studies done in Sangarédi in 2016. The total cost refers to the price of oil multiplied by the number of years necessary for the newly planted oil palm to begin production (3 years).
54. In keeping with the principle that compensation will be paid directly to the Owner/User of an affected asset, cash compensation for palm oil will be paid directly to women involved in palm oil production, and not to the head of household. Consultations will be made with community women organized in palm oil production associations to identify women actively producing palm oil in the impacted area. All women that were previously harvesting palm tree nuts from wild palms will receive cash payments equal to their loss of revenues. These women mainly come from Parawi but also including women from Sinthiourou Tiouladi and Mobhi Kansihi. Cash compensation payments will be spread out over three years and paid in three instalments.

---

<sup>8</sup> *Sangarédi Alumina Refinery Resettlement Action Plan, Section 7.2.5.4 - Agricultural recovery*

<sup>9</sup> *EGA Concession RAP 2016, Section 5.4.4.1*

**Table 7. Establishment of Replacement Oil Palm Plantations**

Communities	Plantation Field	Women Members Group	Phase 1 2017 (Planted)		Phase 2 2018 (Planned)		Phase 3 2019 (Planned)		Phase 4 2020 (Planned)	Distance from the village	Total ha	Total Trees
			Ha	Trees	Ha	Trees	Ha	Trees	Replanting of dead trees			
Parawi	Didèrè Nöra	43	2.8	400	3	429	0.89	127	143	200 m	6.69	1099
Mobhi	Mobhi Fitare	70	1.5	215	0	0	0	0	32	2 km	4.2	691
	Djolol Kouradjé		2.7	386					58	6 km		
Sinthiourou Tiouladi - Diwé	Thiankoun Mama	20	3	430	3	429	0.89	127	148	1.30 km	6.89	1134
Total	4	133	10	1431	6	850	1.78	254	381		17.78	2924

**Table 8. Compensation Rates – Perennial Crops**

COMPENSATION RATE: CULTURES PERENNES / PERENNIAL CROPS (CONCESSION)							
Variety (French)		Variety (English)		Compensation Rates Per Tree: 2017 in GNF			
				Seedling (less than 1 yr)	Young Non-Productive	Young Productive	Adult
Anacardier		Cashew		15.000	90.000	495.000	561.000
Ananas		Pineapple		7.000	22.000	38.833	38.833
Arbre médicinal		Medicinal tree		12.000	102.000	175.329	178.662
Avocat		Avocado		12.000	49.500	487.000	567.000
Bambou (Prix de l'unité)		Bambou (Prix de l'unité)		12.000	30.000	133.500	141.000
Banane		Banana		7.000	82.000	269.500	292.000
Calebassier (arbre)		Calabash tree		12.000	62.000	1.095.000	1.207.000
Citronnier		Lime		12.000	97.714	874.500	987.000
Cocotier ordinaire (nombre de noix)		Coco (not selected)		35.000	136.667	2.007.500	2.130.000
Colatier		Cola tree		20.000	82.000	1.962.000	2.362.000
Corossolle (Sop-sop)		Corossol		12.000	27.000	1.279.500	1.527.000
Fromager (kiri - Ceiba pentandra)		Kapok Tree (Ceiba pentandra)		12.000	87.000	189.500	197.000
Goyavier		Guyava tree		12.000	87.000	912.000	1.062.000
Mandariner		Mandarine tree		12.000	105.750	1.283.250	1.429.500
Manguier greffé		Mango tree (grafted)		12.000	97.714	542.048	602.055
Manguier non greffé		Mango tree (not grafted)		12.000	87.000	499.500	567.000
Méko (Dialium Guineense)		Méko (Dialium Guineense)		12.000	40.378	307.000	382.000
Néré (Parkia biglobosa)		Néré (Parkia biglobosa)		12.000	12.000	1.429.500	2.037.000
Oranger		Orange tree		12.000	97.714	716.278	803.795
Palmier naturel		Palm (wild)		12.000	64.500	145.125	150.750
Palmier sélectionné		Palm (selected)		20.000	70.000	410.000	445.000
Pamplemoussier		Pomelo tree		12.000	112.000	516.375	555.750
Papayer		Pawpaw		12.000	19.500	120.750	139.500
Tamarinier (djabhè)		Tamarind (djabhè)		12.000	112.000	612.000	662.000

### 5.4.3 Community Compensation

55. Community compensation is exclusively in-kind in the form of permanent improvements or upgrades to communal infrastructures. Consultations will be carried out with the councils of elders and all community members of impacted villages to agree on community projects. For the impact on bush land (i.e. loss of usufruct of other resources in the impacted area - hunting, grazing timer and NTFP), community compensation costs are estimated following examples of other resettlement projects in Guinea for the same scale of impact.

56. Following consultation with the village of Sinthiourou Tiouladi regarding community compensation for restriction on the construction of dwellings between the village and the river, the community asked for, and was given, the right of use the dam pipeline maintenance road and a spur to be built to connect the community with it. The distance between maintenance road and built area of the village is approximately 100 m.
57. Community compensation for the loss of wild palm trees (as well as a lesser number of wild fruit trees) will be made through the reestablishment of the new plantations on land identified and owned by the affected lineages. The costs include seedlings, land clearing, preparations, planting and security. To date, 10 ha of land has been identified, cleared, and planted. These plantations will be expanded for the next 2 years. Budgeting, planning and implementation is based on compensatory palm plantation projects recently undertaken by GAC with great success.
58. See table below for the average cost per hectare of the existing compensatory palm plantation project, that is an average of 4,343 USD/ha plus 10% contingency fund. Considering 150 palm tree per hectare, approximately 18 hectares are thus needed for the new plantation project (replacement for loss of the approx. 2,500 trees).

**Table 9. Average Cost per Hectare of Existing Palm Plantation Project (3 years)**

Compensatory palm tree plantation	Area (Ha)	Fencing and dev of palm stand (USD/Ha)	Warden (USD/Ha)	Land clearing - 3 times per year (USD/Ha)
Tiouldé	2.7	660\$	1 260\$	1 800\$
Pétoun Djiga	1,8	810\$	1 800\$	1 800\$
Filo Bowal	1,6	1 000\$	2 100\$	1 800\$
<b>Average (USD/Ha)</b>	-	823\$	1 720\$	1 800\$
<b>Total cost (USD/Ha)</b>				<b>4 343\$</b>

**Table 10. Cash Compensation for Loss of Palm Oil Production**

Cash compensation for loss of palm oil production (3 years)					
Tree categories	Impacted trees	Production (L/year)	Average cost (GNF/L)	TOTAL (GNF) 3 years	TOTAL (USD) 3 years
Young productive	1195	6	12,000	258,120,000	34,416
Adult	664	10	12,000	239,040,000	31,872
<b>TOTAL</b>				<b>497,160,000</b>	<b>66,288</b>

#### 5.4.4 Temporary Employment

59. Community members will be employed in community compensation and livelihood restoration activities such as tree planting and the preparation of land and implementation of irrigation systems. Community members will also be given priority in employment in dam related construction works, as explicitly requested in consultation meetings.

60. Even though work is only temporary, any remunerated work opportunity is highly valued by PAH. Contractors are obliged in writing (included in the Contract) to only hire workers outside the three communities when required skills are not available within the impacted communities. These principles are stated in GAC's Recruitment Procedure.

## 6. LIVELIHOOD RESTORATION SUPPORT

### 6.1 LIVELIHOOD RESTORATION PROGRAMS

61. The greatest impact on livelihoods is related to the loss of upland agricultural land where rice and grains are grown; and bottomlands affecting palm oil production. Rice and palm oil, in addition to vegetables from market gardens, and cashews are the most important crops grown in the affected area. The impact from the loss of bottomland and the impact on wild palm trees and other perennial crops that grow there is compensated in-kind through the creation of new oil palm plantations - with interim in-cash payments for 3 years to compensate for loss of production. The impact from the loss of agricultural land for annual crops will also be compensated in-kind through an agricultural-based livelihood restoration program focused on introducing improved agricultural/agro-forestry practices designed to increase yields. Specifically, the program will facilitate the development of high yield irrigated crops on the replacement lands at Pétel Kiendi. If the feasibility studies show potential development, agroforestry and agro-ecological practices will also be introduced in unaffected upland areas (*djolol*). It is anticipated that the increase in agricultural yields will offset the relatively minor impact resulting from loss of fishing in the Tiouladiwol River during dam construction; and the loss of a relatively small area where hunting occurs. It should also be noted that GAC can only facilitate the identification of potential replacement agricultural land of similar characteristics and under a similar tenure regime in consultation with Village Elders and Lineage authorities. GAC has no land itself to distribute, and is in fact barred from buying/selling land by Guinean Law.
62. Pressure on land in the dam project area, mainly due to rapid demographic increase, mining activities and the expansion of cashew plantation (land privatization), poses a significant challenge to traditional agriculture (slash and burn fallow system on *djolol* land). Household food security depends on this system, but it may not be sustainable in the long term given the limited availability of hillside land.
63. GAC is establishing a long-term global agricultural enhancement strategy (development of land potential, assessment of new crops and techniques, assessment of gender impacts, integration of agriculture and animal husbandry, etc.). Although the scope of the Livelihood Restoration Program for this site specific RAP is to target PAH through the agricultural intensification project of *Pétel Kiendi*, it will follow the GAC global agricultural strategy to ensure sustainability.
64. Phase 1 of the creation of replacement oil palm plantations has been completed with the identification of replacement land in 4 areas, and the planting of approximately 1,430 new palm seedlings completed in July, 2017. Expansion of these new plantations will continue for

the next 2 years. Oil palm seedlings that have died during the first 3 years of this activity will be replaced in year 4 (2020).

65. The land on which the replacement oil palm plantations were planted was identified in consultation with the affected communities, and comes from the affected “lineage” existing land-bank. As such, it is assumed there are no long-term social impacts associated with the use of this land for this purpose.

## 6.2 LIVELIHOOD RESTORATION MONITORING AND EVALUATION

66. The monitoring of the restoration of the livelihoods of all affected persons will be implemented through several channels. First, an individual livelihood baseline set of data will be built for all affected households, meaning all households of the three affected villages. Since almost all impacts are on communal resources, each household will be deemed having the same average impact, at least for the main resources affected: wild palm trees and *djolol* land for cereal cultivation (see table 3). The impact will be assessed in kind (kilograms of paddy or liter of oil) and translated in cash.
67. The programs developed by GAC and detailed above will ensure the restoration of the livelihoods. For each program, the production will be monitored and each participant recorded. Each program will also be monitored more specifically through the objectively verifiable indicators of the logical framework (yet to be finalised). The outcome will be the individual production and the individual income received by each participant to the program. It will be collected every year and registered in the Livelihood Restoration Module of Boréal data management software.
68. The livelihoods of a household will be considered restored if the income obtained through the programs is higher than the income registered as the household livelihood baseline. To assess the sustainability of the restoration, the average income of a 5 years period will be considered. Five years after the impact or 2 years after the end of the livelihood restoration programs, an independent evaluation will assess if livelihoods of affected households have been sustainably restored.
69. For impacts of a lesser extent due to their extensive nature, like grazing or hunting, the baseline, the impact and the livelihood restoration linked to those specific activities will be assessed via focus groups.

## 7. VULNERABLE PEOPLE

70. Vulnerable people are people who by virtue of gender, ethnicity, age, physical or mental disability, economic disadvantage or social status may be more adversely affected by resettlement than others and who may be limited in their ability to claim or take advantage of resettlement assistance and related development benefits.
71. No vulnerable people have been identified in the three directly impacted households (owners of fruit trees) that will receive cash compensation. However, GAC will use implementation of

livelihood restoration activities, and work with the 3 Village Resettlement Committees to identify any vulnerable members of the 133 PAHs. Once this data has been collected, a Vulnerable Assistance Program will be developed to ensure that PAHs with vulnerable members are fully integrated into the consultation/information disclosure process; and can benefit fully from all of GAC's activities.

## 8. RESETTLEMENT PROCESS AND ENGAGEMENT

### 8.1 INTRODUCTION

72. GAC fully recognizes the traditional customary authorities and the importance of including the active participation of women and youth in the engagement and consultation process. The resettlement process documented in this site-specific RAP further benefits from the positive relations established between GAC and the communities through previous successful engagement and community development projects. It also recognizes the expectations created in the area through the initial resettlement planning for the much larger dam (included in the GA RAP Volume 5, 2005) as well as clearly explaining the reason behind the community based compensation approach, throughout the engagement process.

### 8.2 RESETTLEMENT ENGAGEMENT AND SURVEY ACTIVITIES

73. The following consultation and survey activities were implemented during the RAP preparation process (see Annex for detailed consultation records):

- Governmental stakeholders:
  - Meetings at *Préfecture* (Boké) and *Sous-préfecture* (Sangarédi) levels in the second half of 2016 to present the project;
- Affected people – during the survey and census phase from November to December 2016:
  - Pre-census carried out in the footprint together with land and individual asset owners;
  - Community meeting in Parawi with local authorities' representatives (*Chef de secteur* of Parawi and Sinthiourou Tiouladi), elders and lineage as well as community members from the three villages of Parawi, Sinthiourou Tiouladi and Mobhi Kansihi to inform about the Project, explain the resettlement process, including the cut-off date (15th December 2016) and grievance system as well as answering questions;
  - Census and inventory of affected assets, including detailed information on all assets in the footprint was carried out as well as a socio-economic survey for individually affected households.
  - Community meeting in Sinthiourou Tiouladi to consult the village regarding community compensation options to offset the impact of construction restrictions between the village and the river;

- Community meeting in Parawi (including representatives from Sinthiourou Tiouladi and Mobhi Kansihi) to present survey results and constitute a community resettlement committee;
  - Hand-over of all asset survey sheets with sign-off and collection of any grievances potentially requiring a correction to the asset records.
74. During resettlement implementation beginning in early 2017, engagement with affected people included:
- Community meeting in Parawi (including representatives from Sinthiourou Tiouladi and Mobhi Kansihi) to explain entitlements and the compensation system in addition to consult regarding the loss of palm oil potential (replanting downstream) and proposed livelihood restoration support (mainly the preparation of replacement lands).
  - Delivery of in-cash compensation entitlements (fruit trees) and initiate community based compensation and livelihood restoration support.
  - The first meeting to explain the entitlement matrix was hold on 14/02/2017 and gathered 122 persons of the 3 villages, including 48 women. The part of the matrix about the specific impact on palm oil production and the specific restoration measures were then explained in detail to the women groups during the meetings launching the palm plantation program.
75. While ongoing community engagement will be carried out through open community meetings, the 3 community resettlement committees will liaise with GAC and represent the affected village population in all matters regarding the resettlement process. It is composed of: landowners (lineage), individually impacted asset owners, other community members, women and youth, who are remunerated for their participation. No host communities are implicated in this resettlement process.

### **8.3 GRIEVANCE MANAGEMENT**

76. The RAP grievance management system is part of the GAC-wide grievance management system. Although the active consultation process is designed to directly address and resolve most queries and grievances throughout the process the possibility to formally register complaints is reiterated during the resettlement process.
77. For more details, see LACRF 5. GRIEVANCE MANAGEMENT.

## **9. IMPLEMENTATION**

### **9.1 DELIVERY ARRANGEMENTS**

78. GAC will seek to reach amicable agreements with impacted communities and all PAPs through the robust engagement process mentioned above. It is therefore not anticipated that compulsory procedures will be used. Implementation arrangements will include the following:

- Hand-over to PAPs of asset inventory details, for verification, processing of any mistakes or grievances, and sign-off;
- Establish community based compensation and livelihood restoration support through community consultations, including the following:
  - Replacement of lineage (and community used) agricultural land and its preparation according to customary rules – to compensate for the loss of land;
  - Replacement of wild palm trees (as well as community wild fruit trees) in the form of new plantations of the same size planted and maintained to productive age by community women – to compensate for impact on palm oil production and fruit trees;
  - Support for livelihood restoration in the form of assistance to improve agriculture practices (agro forestry and agro-ecological techniques), linked to the preparation of replacement land – to compensate for the impact on livelihoods (agricultural as well as grazing, fishing, hunting, timber and non-timber forest products);
  - Delivery of community compensation to the village of Sinthiourou Tiouladi (road connection to and right to use the pipeline maintenance road) – to compensate for the restriction on house construction between the village and the river;
- Hand-over household- or individual-level compensation agreement, based on the presented compensation calculations and rates sheet (agreement on community based compensation and livelihood restoration support is documented in signed community meeting minutes);
- Initiate delivery of in-kind and community based compensation as well as livelihood restoration support);
- Pay in-cash compensation for individually owned fruit trees and for loss of palm oil production. The principles and provisions applicable to payment of cash compensation in the LACRF will be followed, i.e. compensation is paid in Guinean Francs (GNF) before impacts, directly to the Owner/User of the affected asset (no proxies and larger amounts paid in several instalments to encourage better household management of significant amounts of cash); and
- Provide money-management awareness training together with the bank when accounts are opened and in-cash compensation payments are made.

79. Finally, affected communities will be prioritized for future community development projects.

## 9.2 ORGANISATIONAL ARRANGEMENTS, ROLES AND RESPONSIBILITIES

80. GAC will implement the RAP and will take full responsibility for its funding and implementation. In order to ensure transparency and to minimize risks of opposition against the Project, community consultations will continue throughout the resettlement process through community meetings and meetings and contacts with the resettlement committee. Government stakeholders such as the *Préfecture* of Boké and *Sous-Préfecture/Commune Rurale* of Sangarédi will be informed about key phases of the process while local authorities on *Secteur* level are invited to participate in the community meetings.

81. Resettlement activities at GAC are placed under the responsibility of the Resettlement Superintendent, who is reporting to Community Manager, reporting to the “Stakeholder

Engagement” Director, who in turn reports to the GAC Chief Executive Officer. The resettlement team is divided in three teams, each lead by an experienced local professional. Those three teams are the Compensation, Physical Resettlement and Livelihood Restoration teams. The Resettlement team is being strengthened by the recruitment of additional staff including supervisors, data management and GIS staff. The latter is key to be able to ensure precise measurement of impact and exact compensation calculations.

82. Three different Economic Resettlement Committees will be created – one in each affected community. It is anticipated that they will be operational by the end of 2017. Each Committee will have 7 members representing different segments of the affected population, including:
- Community Palm Oil Project Representative
  - Economic Interest Grouping Representative (x2?)
  - Farming Group Representative
  - Youth Representative
  - Lineage (Property Owners) Representative
  - District Chief
83. Each separate Resettlement Committee will meet at least once per month; and all 3 will meet together once per quarter. The issues that the Resettlement Committees will discuss and have decision-making authority over include:
- Identify and negotiate the access to the agricultural replacement land were to implement the programs (palm plantation, rice and market gardening programs).
  - Identify the beneficiaries of the different programs and insure that all members of the Community can access them.
  - Be the main interlocutor of GAC for all concerns about Economic Resettlement and as such, promote GAC’s Grievance Management procedures in the Community.
84. GAC will provide the following support and training to the Resettlement Committees, and the Economic Interest Groups:
- Roles, composition and responsibilities of the Committee / Group (several trainings)
  - What is Livelihood Restoration and what is GAC’s Livelihood Restoration Strategy
  - Basic Accounting and how to plan the development of a program
  - Technical trainings specific to the activity in question

### **9.3 BUDGET**

85. The budget for the RAP is shown in Table 11 below.

**Table 11. RAP Budget<sup>11</sup>**

#	Item	Unit	Quantity	Unit price (USD)	Total Price (USD)
<b>1</b>	<b>CASH COMPENSATION</b>				
1.1	<i>Palm oil production (loss of income)</i>				
1.1.1	Young productive palm tree (3 years)	Unit	1	34,416	34,416
1.1.2	Adult palm trees (3 years)	Unit	1	31,872	31,872
1.2	<i>Trees</i>				
1.2.1	Cashew (seedling)	Unit	9	0.90	8
1.2.2	Mango Tree (seedling)	Unit	17	0.90	15
1.2.3	Mango Tree (young non-productive)	Unit	12	11.89	143
1.2.4	Guyava Tree (seedling)	Unit	18	0.90	16
1.2.5	Guyava Tree (young non-productive)	Unit	7	10.51	74
1.2.6	Guyava Tree (young productive)	Unit	1	116.28	116
	<b>Sub-Total 1 - Cash compensation</b>				<b>66,660</b>
<b>2</b>	<b>REPLACEMENT LAND</b>				
2.1	<i>Development of Pétel Kiendi area</i>				
2.1.1	Pre-feasibility and feasibility studies	Unit	1	35,000	35,000
2.1.2	Construction and irrigation work	Unit	1	185,000	185,000
	<b>Sub-Total 2 - Replacement land</b>				<b>220,000</b>
<b>3</b>	<b>COMMUNITY COMPENSATION</b>				
3.1	<i>Communities in-kind compensation</i>				
3.1.1	Community project in Parawi	Unit	1	10,000	10,000
3.1.2	Community project Mobhi Kanhisi	Unit	1	10,000	10,000
3.1.3	Community project Sinthiourou Tiouladi	Unit	1	10,000	10,000
3.2	<i>Palm tree plantation</i>				
3.2.1	Development of palm stand and planting	Unit	1	83,200	83,200
	<b>Sub-Total 3 - Community compensation</b>				<b>113,200</b>
<b>4</b>	<b>LIVELIHOOD RESTORATION</b>				
4.1	<i>Agricultural Technical assistance</i>	Year	2	22,000	44,000
4.2	<i>Feasibility study and agro-forestry program</i>	lump sum	1	215,054	215,054
4.3	<i>Feasibility study and fish farming program</i>	lump sum	1	16,130	16,130
	<b>Sub-Total 4 - Livelihood restoration</b>				<b>275,184</b>
<b>5</b>	<b>ASSISTANCE TO VULNERABLE PEOPLE</b>				
5.1	<i>General allocation for assistance to potentially vulnerable people - if needed</i>	Unit	1	5,000	5,000
	<b>Sub-Total 5- Assistance to vulnerable people</b>				<b>5,000</b>
<b>6</b>	<b>IMPLEMENTATION</b>				
6.1	<i>Resettlement support</i>				
6.1.1	Completion and quality control of surveys	Month	0.5	25,000	12,500
6.1.2	Assistance to RAP implementation	Month	1	25,000	25,000
6.1.3	Assistance to information management	Month	0.5	25,000	12,500

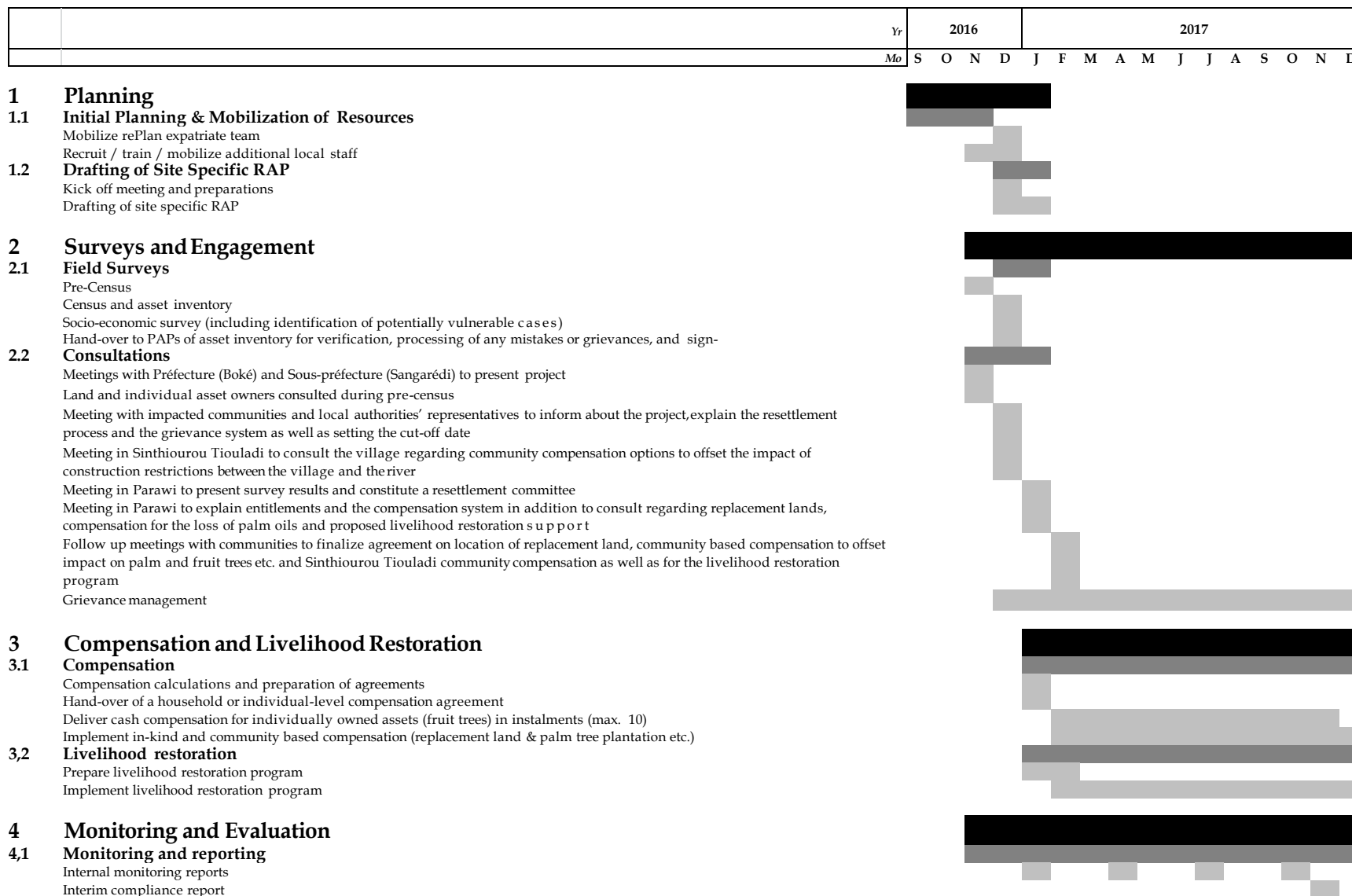
#	Item	Unit	Quantity	Unit price (USD)	Total Price (USD)
6.2.	<i>External monitoring</i>				
6.2.1	External compliance review	Month	0.5	25,000	12,500
6.2.2	Completion audit	Month	1	25,000	25,000
<b>Sub-Total 6 - Implementation</b>					<b>87,500</b>
7	<b>CONTINGENCIES</b>				
7.1	Contingencies 10%				70,088
<b>Sub-Total 7 - Contingencies</b>					<b>70,088</b>
<b>GRAND TOTAL</b>					<b>837,632</b>

<sup>11</sup> Implementation costs are based on the RAP for Mining Infrastructure Component of the Project in Béli Kiendi. GAC operating costs (staff, vehicles etc.) are not included in the budget.

## 10. IMPLEMENTATION SCHEDULE

86. The implementation schedule is presented in Figure 7.

Figure 7. RAP Implementation Schedule



## ANNEX 1. CONSULTATION RECORDS

### Visit to Sinthiourou Tiouladi and physical impact analysis, 14 December, 2016

INFORMATION GENERALE					
<b>Date:</b>	14/12/216	<b>Heure Début :</b> <i>Start Time</i>	14H00	<b>Heure Fin:</b> <i>End Time</i>	15H30
<b>Titre de la Réunion:</b> <i>Title of the Meeting:</i>	Visite exploratoire à Sinthiourou Tioulagui en prélude de la mise en œuvre du du muni plan d'action de réinstallation. (Barrage)				
<b>Type de reunion:</b> <i>Type of meeting</i>	<input checked="" type="checkbox"/> Consultation <input type="checkbox"/> Sensibilisation <input type="checkbox"/> Forum <input type="checkbox"/> Négociation <input checked="" type="checkbox"/> Information				
<b>Localisation</b> <i>Location:</i>	<i>lieu de rencontre</i>				
	<i>Ville/ Village</i>	<i>District</i>	<i>Sous-Prefecture</i>	<i>Prefecture</i>	
	Sinthiourou Tiouladi	Boulléré	Tanènè	Boké	
<b>Catégories de Sujet:</b> <i>Subject categories:</i>	<input checked="" type="checkbox"/> Affaire Communautaire <input type="checkbox"/> Projets de Développements <input type="checkbox"/> Emploi <input type="checkbox"/> Suivi des plaintes <input checked="" type="checkbox"/> Compensation <input type="checkbox"/> Clarification de projet <input type="checkbox"/> GAC Informations procédures <input type="checkbox"/> GAC Evaluation Projet <input type="checkbox"/> Information Planification <input type="checkbox"/> Projet				
<b>Objectif de la Réunion:</b> <i>Reason for Meeting:</i>	Rencontrer l'autorité locale du village pour une visite de la localité afin de cerner tous les aspects liés à la réinstallation économique des				
Agenda / Messages Clés	<ul style="list-style-type: none"> <li>• répresentation de la mission</li> <li>• Raisons de la mission à Tiouladi.</li> </ul>				
<b>Nombre de participant</b> (liste de présence scannée)		<b>Type de projet</b>	Mine	Port	Chemin de fer
<b>Identifier la partie prenante : populations locales de Sinthiourou Tiouladi</b>					
<b>Atmosphère générale</b>	Très Bon <input type="checkbox"/> enthousiaste	Satisfaisant <input type="checkbox"/> Négatif	Peu <input type="checkbox"/> eutre	<input type="checkbox"/>	<input type="checkbox"/>

<b>Name :</b>	<b>Département :</b>	<b>Date :</b>	<b>Signature :</b>
NABE Mandiou	RAP/REINSTALLATION	14/12/16	
<b>Visite de terrain à Sinthiourou Tiouladi 14/12/2016</b>			
<b>Frédéric Lindblom</b>	<b>Consultant</b>	<b>Sangaredi</b>	
<b>Olivier</b>	<b>Consultant</b>	<b>Sangaredi</b>	<b>621 986 952</b>
<b>Aly Bondabon Cisse</b>	<b>Consultant</b>	<b>Kamsar</b>	<b>620 240 027</b>
<b>Mandiou Nabe</b>	<b>Officier Réinstallation</b>	<b>Sangaredi</b>	
<b>Quelques photos de la réunion</b>			



COMMUNITY MEETING IN PARAWI , SURVEY AND COMPENSATION PROCESS, 15 DECEMBER, 2016

INFORMATION GENERALE					
<b>Date:</b>	15/12/2016	<b>Heure Début :</b> <i>Start</i>	<b>13h40</b>	<b>Heure Fin :</b> <i>End Time</i>	<b>15h40</b>
<b>Titre de la Reunion:</b> <i>Title of the Meeting:</i>	Assemblée villageoise à Parawi concernant les processus de recensement des biens et de compensation dans le cadre de la construction du barrage et du canal d'évacuation d'eau de Tiouladi à Beli Kindy.				
<b>Type de reunion:</b> <i>Type of meeting</i>	Consultation Forum <input type="checkbox"/> Information <input checked="" type="checkbox"/>	Sensibilisation Négociation			
<b>Localisation Location:</b>	<i>lieu de rencontre</i>				
	<i>Ville/ Village</i>	<i>District</i>	<i>Sous-Prefecture</i>	<i>Prefecture</i>	
	Parawi	Boulléré	Sangaredi	Boké	
<b>Catégories de Sujet:</b> <i>Subject catégories:</i>	Affaire Communautaire <input checked="" type="checkbox"/> Développements <input type="checkbox"/> Emploi <input checked="" type="checkbox"/> Compensation <input type="checkbox"/> GAC <input type="checkbox"/>	Projets de Suivi des plaintes Clarification de projet			
<b>Objectif de la Réunion:</b> <i>Reason for Meeting:</i>					
<b>Agenda / Messages Clés</b>	1. Brève présentation du projet EGA/GAC ; 2. Communication du consultant sur les démarches et approches de la réalisation du barrage et de la conduite d'eau				
	3. Procédure de gestion et de traitement des plaintes ; 4. Questions.				
<b>Nombre de participant</b> (liste de présence scannée attachée)		<b>Type de projet</b>	<b>Mine</b>	Port	Chemin de fer
<b>Identifier la partie prenante : les populations locales des villages situés à proximité du barrage</b>					
<b>Atmosphère générale</b>	Très Bon	Satisfaisant	Peu enthousiaste	Negatif	
	<input checked="" type="checkbox"/>	<input type="checkbox"/>	<input type="checkbox"/>	<input type="checkbox"/>	
	Neutre				

## Sommaire d'information transmis aux Parties Prenantes : Introduction

Une importante réunion de concertation au sujet de la réalisation du barrage et la conduite d'eau s'est tenue dans le secteur de Parawi, district de Boulléré, commune rural de Sangaredi. Cette rencontre a regroupé les habitants des villages (Sinthiourou Tiouladi, Mobhi, Diwe, Parawi) vivants à proximité du futur barrage. Objectif : informer, sensibiliser et discuter sur les méthodes de la mise en place du barrage, les impacts qui affecteront les populations, les méthodes de recensement des biens et les stratégies de compensation.

Etaient présents à cette rencontre, les différents groupes sociaux professionnels des villages cités un peu plus haut (Agriculteurs, Eleveurs, ménagères...), Mamadou Lama Diallo (Coordinateur Compensation), les consultants

M. Frédéric Lindblom, M. Olivier Paquet, M. Alhassane Sakho (officier compensation), M. Mandiou Nabe (Officier de réinstallation), M., M. Mamadou Moussa Bah (Consultant Boréal).

### 1. Brève présentation du projet EGA/GAC

Le coordinateur de la compensation prenant la parole, a tout d'abord remercié les sages, toutes les couches sociales présentes pour la mobilisation avant de procéder à une brève présentation des cadres composant la mission.

Poursuivant son intervention, il a fait un bref rappel des différentes phases, que le projet a connu de 2004 à nos jours. Le projet a connu plusieurs actionnaires. Avec le retrait de deux actionnaires majeurs en l'occurrence Global et BHP Billiton, GAC devient une propriété exclusive du groupe d'EGA (Dubal, Mubudala), un géant mondial dans la transformation de la bauxite en aluminium. Pour le coordinateur de la compensation, ce petit rappel des faits est important à connaître et à comprendre pour les communautés avoisinantes.

### **Communication du consultant sur les démarches et approches de la réalisation du barrage et de la conduite d'eau.**

Le consultant dans sa communication a remercié les populations pour la forte mobilisation et l'intérêt accordé à ces différentes rencontres. Avant d'indiquer que, précédemment GAC voulait construire un grand barrage qui aurait certainement de grandes répercussions sur la vie des communautés avoisinantes. En raison des exigences du moment, GAC envisage dans sa la planification d'un barrage beaucoup plus petit que celui initialement programmé.

Les impacts directs de la construction du barrage sont les suivants : création d'un réservoir d'eau douce de 24 hectares sur le territoire de Parawi, une conduite d'eau ainsi qu'une route d'accès de 6 Km de Tiouladi jusqu'à Beli Kindy. Également, création d'une « zone de sécurité » en aval du barrage, sur le territoire de SinthiourouTiouladi ; les habitants de ce village ne pourront pas construire de maisons près de la rivière, ceci pour des raisons de sécurité dans le cas très improbable d'un bris de barrage. Aussi, après vérification, aucune structure résidentielle de Sinthiourou Tiouladi ne devra être déplacée, puisque toutes les structures résidentielles de ce village sont déjà hors des zones de danger en cas de bris de barrage. Il n'y aura donc pas de réinstallation physique, plutôt une réinstallation économique.

GAC a déjà engagé une société pour les travaux liés à la réalisation du barrage. Ces travaux ne commenceront pas dans le Djolol Tiouladi avant le recensement et la compensation des biens qui se trouvent dans l'emprise de ces travaux. À ce jour, le recensement à l'intérieur du réservoir est achevé, certainement ce lundi (19/12/2016) les travaux de recensement des biens situés dans l'emprise de la conduite d'eau / route d'accès vont commencer. Si tout se déroule bien les travaux du barrage devraient commencer l'année prochaine.

Les principaux biens relevés dans l'emprise du réservoir par les équipes de recensement sont des arbres fruitiers avec propriétaires privés, des palmiers communautaires et des petites infrastructures telles que des abreuvoirs pour le bétail. Dans l'empreinte de la route d'accès il y aura fort probablement des cultures et des arbres fruitiers impactés.

Fredrik Lindblom explique que la date de la réunion d'aujourd'hui est la date butoir. C'est donc dire que tous les biens, cultures, activités agricoles, habitations etc. qui seraient mis en place après aujourd'hui ne seront pas recensés et compensés par GAC.

Fredrik Lindblom explique aux habitants de Sinthiourou Tiouladi de s'abstenir de construire des cases et maisons vers le cours d'eau, pour des raisons de sécurité, d'autant plus que le chef secteur nous confiait hier que cette localité dans un passé récent (2004) a connu de grandes inondations. Dans les prochaines semaines, il y aura des consultations avec cette communauté pour déterminer la meilleure manière de compenser le village pour cet impact (perte d'accès pour des constructions résidentielles).

Les prochaines activités prévues dans le cadre du processus d'acquisition des terres pour la construction du barrage sont les suivantes:

- Finalisation du recensement (conduite + route d'accès) ;
- Présentation des données issues du recensement et de l'éligibilité pour la compensation
- Méthodes de rémunération ;
- Recueillir la perception des communautés sur les impactés liés au processus de réinstallation économique ;
- Compensation des personnes affectées par le projet AVANT le démarrage des travaux.

Par ailleurs, note Fredrik Lindblom, le but recherché à travers ces multiples consultations et prises de contacts est de s'assurer de la transparence dans le processus, indispensable à la réussite du projet. C'est pourquoi l'officier en charge à la réinstallation prendra la parole pour vous expliquer la politique de GAC en matière de gestion et de résolution des plaintes vis-à-vis des communautés impactées.

### **3. Procédure de gestion des plaintes**

GAC a élaboré une politique de gestion et de traitement des plaintes qui prend en compte, les préoccupations des communautés en cas de désaccord suite à un recensement. En cas de différends, il suffit de rédiger soi-même par une autre personne tierce une plainte adressée au coordinateur de la compensation en indiquant l'objet de votre plainte. Dans les 30 jours qui suivent le dépôt de la plainte, celle-ci doit être traitée et fermée. Si le plaignant est d'accord sur la méthode, surtout de la réponse donnée à la requête, la plainte doit être fermée. Si la personne affectée par le projet estime que la plainte n'est pas résolue, en ce moment elle peut saisir les juridictions compétentes en la matière.

#### 4. Questions

Une partie des questions des personnes affectées par le projet portait sur l'information à temps des différentes réunions dans les villages. Nous souhaiterons être informé à temps pour une large diffusion auprès des populations qui doivent se déplacer. Le message est passé depuis trois jours, cependant l'équipe RAP et les consultants ont pris bonnes notes.

Les représentants de la communauté mentionnent qu'ils souhaiteraient que les jeunes soient engagés pour des emplois salariés, d'ailleurs il y a une liste qui circule dans la communauté pour engager de la main d'œuvre non qualifiée ? La population demande si cela est le processus normal?

Agent Rel communautaires : S'il y a une liste qui circule dans la communauté, ce n'est pas de GAC, ce n'est pas le processus, néanmoins des responsables du projet seront informés de cet état de fait. De par son expérience en Réinstallation dans les projets miniers, Fredrik Lindblom précise qu'il y a toujours du travail, mais pas pour tout le monde. Ensuite, il y a les projets communautaires, mais pas tout le temps. Aussi, la réinstallation ne concerne qu'une minorité.

Les représentants de la communauté insistent sur la question de l'emploi local et menacent de bloquer les travaux si la moitié des travailleurs non qualifiés ne viennent pas de Parawi. Après tout c'est Parawi qui est le plus lourdement impacté par la construction du barrage.

Lama Diallo mentionne que cela n'est pas un bon processus. Il ne faut pas faire de menaces. Il faut discuter et travailler ensemble. Le projet comprend très bien les demandes de la population pour l'emploi local et fera le suivi nécessaire. La population de Parawi sera consultée et avisée du processus mis en place pour l'emploi local.

Egalement, en raison du fait que la question d'emploi ait été le point de préoccupation au cœur de la rencontre, Fredrik Lindblom indique qu'il le discuterait avec les responsables au niveau management de GAC afin que les emplois non qualifiés qui seront créés puissent bénéficier aux populations directement impactées par le projet.

Un jeune de la communauté demande s'il peut construire une maison près de la rivière à Sinthiourou Tiouladi, s'il n'a pas d'autres endroits ou construire sa maison?

Fredrik Lindblom répond que non, il ne peut pas construire dans la zone de restriction. C'est une restriction et GAC prépare un plan pour mitiger l'impact et il y aura des consultations de la communauté à cet effet. Un ancien du village mentionne que celui qui a posé la question est son fils et il dit que tout le monde au village sait déjà qu'il ne faut pas construire proche de la rivière, ceci depuis les grandes crues de 2004.

Les représentants de la communauté mentionnent : Est-ce que vous savez que l'ensemble des populations tirent leur subsistance du djolol? La communauté insiste sur l'importance du Djolol dans le cadre de leurs moyens de subsistances et de leurs activités agricoles.

Un agriculteur demande si les gens peuvent continuer à cultiver dans le Djolol en aval du barrage. Fredrik Lindblom répond que oui.

Le consultant précise que le recensement effectué dans le Djolol était une date butoire pour la réalisation de toute activité lucrative sur les lieux. Aucun recensement ne sera effectué à la suite de celui-ci et par conséquent les différents travaux ne seraient pas pris en compte.

### Conclusion

La réunion s'est terminée dans une atmosphère de joie et de parfaite compréhension, entre les différentes parties. Un focus groupe sera organisé ce vendredi 16 décembre 2016 à Sinthiourou Tiouladi pour la suite des activités liées au processus de réinstallation.

### Actions à mener dans les cours, moyennes et longs termes par le projet :

- Renforcer l'information, la communication sur les différentes étapes liées au

**Matériaux Livrés aux Parties Prenants (si pertinentes) :** *Materials given to Stakeholders (if applicable)*

**Compte Redue Produit Par :** *(Minutes produced by)*

Name :	Département :	Date :	Signature :
NABE Mandiou	RAP/REINSTALLATION	27/04/16	
<b>L'EQUIPE RAP ET LES CONSULTANTS A PARAWI DU 15 DECEMBRE 2016</b>			
Mamadou Lama Diallo	Coordinateur/Compensation	Sangaredi/Kamsar	626 238 033
Mandiou Nabe	Officier/Réinstallation	Sangaredi	625 251 145
Alhassane Sakho	Officier/Compensation	Kamsar	622 628 760
Olivier Paquet	Consultant	Sangaredi	
Frederic Lindblom	Consultant	Sangaredi	
Mamadou Moussa Bah	Consultant	Kamsar	622 798 393

### Quelques photos de la réunion



### 3. COMMUNITY MEETING WITH LAND OWNERS, 15 DECEMBER, 2016

INFORMATION GENERALE					
<b>Date:</b>	15/12/2016	<b>Heure Début :</b> <i>Start</i>	14h45	<b>Heure Fin :</b> <i>End Time</i>	15h30
<b>Titre de la Réunion:</b>	Entretien avec les autorités locales et propriétaires coutumiers sur les compensations individuelles et communautaires dans la zone				
<i>Title of the Meeting:</i>	réservoir				
<b>Type de reunion:</b>	Consultation Forum Information		Sensibilisation Négociation		
<i>Type of meeting:</i>					
<b>Localisation Location:</b>	<i>lieu de rencontre</i>				
	<i>Ville/ Village</i>	<input checked="" type="checkbox"/> <i>District</i>	<i>Sous-Prefecture</i>	<input type="checkbox"/> <i>Prefecture</i>	
	<i>Parawi</i>	Boulléré	<i>Sangaredi</i>	<input type="checkbox"/> Boké	
<b>Catégories de Sujet:</b> <i>Subject catégories:</i>	Affaire Communautaire Développements Emploi Compensation projet GAC		Projets de Suivi des plaintes Clarification de procédures GAC Evaluation		
<b>Objectif de la Réunion:</b> <i>Reason for Meeting:</i>	Trouver une approche acceptable pour la compensation des palmiers communautaires et autres arbres naturels dans le				
<b>Agenda / Messages Clés</b>	<ul style="list-style-type: none"> <li>• <b>Situation des compensations dans le Djolol Tiouladi ;</b></li> <li>• <b>Entretien avec les autorités locales et les propriétaires coutumiers.</b></li> </ul>				
<b>Nombre de participant</b> (liste de présence scannée attachée)	Une soixan	<b>Type de projet</b>	Mine	Port	Chemin de fer

Identifier la partie prenante : Autorités locales de Parawi et propriétaires coutumiers.					
<b>Atmosphère générale</b>	Très Bon	Satisfaisant	Peu		
	enthousiaste	Negatif	Neutre		
	<input type="checkbox"/>	<input type="checkbox"/>	<input type="checkbox"/>	<input type="checkbox"/>	<input type="checkbox"/>

**Sommaire d'information transmis aux Parties****Prenantes : Introduction**

En marge de la grande réunion à Parawi, le consultant en charge de l'élaboration du RAP a eu un entretien avec les autorités locales et les propriétaires coutumiers. La place publique de la mosquée a servi de cadre pour cette rencontre. Le but de cet entretien est de faire le point avec les personnes concernées par les compensations individuelles et ensuite discuter le cas des palmiers naturels qui devront faire l'objet de projet communautaire pour les populations à l'image de Touldé et de petoundjiga.

**1. Situation des compensations dans le Djolol Tiouladi**

Dans le réservoir du barrage, trois personnes affectées par le projet ont été recensées. Chacun de ces individus a reçu une fiche de recensement. Toute action individuelle sur ce site au-delà de la date butoir ne sera pas prise en compte. Les compensations seront calculées, sur la base des enquêtes prix de 2016 validés par le projet et les autorités en charge du développement rural.

**2. Entretien avec les autorités locales et les propriétaires coutumiers.**

Il a été question des palmiers naturels communautaires. Ces palmiers ont poussé sans l'aide et le travail de personnes. Sur la base du rapport de recensement, ils sont de 2247 pieds et le village y tire profit. Il y aura des consultations dans le futur avec les communautés concernées pour élaborer les stratégies de compensations communautaires.

Pour certains le bénéfice des palmiers naturels doit revenir aux propriétaires terriens, par contre pour d'autres la compensation des palmiers naturels doit bénéficier à toute la communauté. Après discussions les propriétaires acceptent que les palmiers soient enregistrés comme biens communautaires. Il n'y aura pas de compensation individuelle des propriétaires terriens pour ces arbres.

Le responsable de la compensation indique que dans la démarche habituelle du projet, est de projeter un projet communautaire pour le bien de la population. Il précise en substance, qu'une terre propice au développement d'une plantation de palmiers sera trouvée par le projet. Les palmiers seront plantés, entretenus, jusqu'à la maturité et au bénéfice exclusif de toute la communauté. Cette solution semble faire l'unanimité des personnes affectées par le projet.

**Conclusion**

Le plan d'action de réinstallation envisagera toutes les alternatives possibles afin de restaurer les moyens de subsistance des personnes affectées par le projet conformément à la procédure de GAC en matière de compensation. C'est un processus inclusif et participatif qui fera avec les personnes affectées par le projet de manière à les faire participer aux différentes étapes du processus.

**Action à mener**

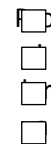
- Renforcer l'information, la communication sur les différentes étapes liées au processus de réinstallation ;
  - La réception, la gestion et la résolution des cas des plaintes liées au processus de réinstallation
- Liste des engagements pris lors de la réunion (si pertinent) : Au nombre des engagements pris durant la rencontre, on peut noter :

A ce stade du processus de réinstallation, aucun engagement n'est pas encore pris, ceci est la phase de discussion, de dialogue, d'échange d'idées et d'informations

No:	Description:	Quantité:	Observations :
<b>Compte Redue Produit Par : (Minutes produced by)</b>			
<b>Name :</b>	<b>Département :</b>	<b>Date :</b>	<b>Signature :</b>
NABE Mandiou	RAP/REINSTALLATION	15/12/16	
<b>L'EQUIPE RAP ET LES CONSULTANTS A PARAWI DU 15 DECEMBRE 2016</b>			
Mamadou Lama Diallo	Coordinateur/Compensation	Sangaredi/Kamsar	626 238 033
Mandiou Nabe	Officier/Réinstallation	Sangaredi	625 251 145
Alhassane Sakho	Officier/Compensation	Kamsar	622 628 760
Olivier Paquet	Consultant	Sangaredi	
Frederic Lindblom	Consultant	Sangaredi	
Mamadou Moussa Bah	Consultant	Kamsar	622 798 393
<b>Quelques photos de la réunion</b>			

COMMUNITY MEETING IN SINTHIYOUROU TIOULADI REGARDING COMMUNITY COMPENSATION, 16 DECEMBER, 2016

INFORMATION GENERALE					
<b>Date:</b>	<b>16/12/2016</b>	<b>Heure Début : Start</b>	<b>8h30</b>	<b>Heure Fin : End Time</b>	<b>11h00</b>
<b>Titre de la Reunion: Title of the Meeting:</b>	Profil socioéconomique de Sinthiourou Touladi et consultation pour la compensation communautaire				
<b>Type de reunion: Type of meeting</b>	Consultation Forum Information		Sensibilisation Négociation		
<b>Localisation Location:</b>	<i>lieu de rencontre</i>				
	<i>Ville/ Village</i>	<i>District</i>	<i>Sous-</i>	<i>Prefecture</i>	
	<i>Sinthiourou Tiouladi</i>	Boulléré	<i>Sangaredi</i>	Boké	
<b>Catégories de Sujet: Subject catégories:</b>	Affaire Communautaire Développements Emploi Compensation projet GAC Informations procédures		jets de S vi des plaintes C ification de GAC E luation Projet		
<b>Objectif de la Réunion: Reason for Meeting:</b>	Entretien avec le chef de secteur, les anciens et autres représentants des différentes couches sociales pour un profil SE du village et consultation sur les stratégies de compensation communautaires				
<b>Agenda / Messages Clés</b>	<ul style="list-style-type: none"> <li><input checked="" type="checkbox"/> • Informations sur l'histoire et le système foncier du village</li> <li><input type="checkbox"/> • Information sur les principales activités socio-économiques</li> <li><input type="checkbox"/> • Consultation sur les stratégies de compensation communautaire</li> </ul>				



<b>Nombre de participant</b> (liste de présence scannée)	Une soixante	<b>Type de projet</b>	Mine	Port	Chemin de fer
-------------------------------------------------------------	--------------	-----------------------	------	------	---------------

Identifier la partie prenante : Autorités locales de Parawi et propriétaires coutumiers.					
<b>Atmosphère générale</b>	Très Bon	atisfaisant e	u enthousiaste	N atif	Ne
	<input checked="" type="checkbox"/>	<input type="checkbox"/> p	<input type="checkbox"/> g	<input type="checkbox"/> utr	<input type="checkbox"/>

**Sommaire d’information transmis aux Parties Prenantes : Introduction**

Le consultant remercie le chef secteur et la population de recevoir la délégation et de prendre le temps de répondre aux questions, spécialement le vendredi matin. Le consultant s’excuse si les questions qu’il va poser ont déjà été posés préalablement par d’autres intervenants de GAC. Le consultant mentionne que la raison de la réunion est que, suite à la grande réunion d’hier à Parawi, même s’il est maintenant clair que le village de Sinthiourou Tiouladi ne sera pas déplacé, qu’il n’y aura pas d’impacts physiques, malgré tout il y a une restriction d’accès pour construire des maisons près de la rivière. Ainsi GAC et le village de Sinthiourou Tiouladi sont impliqués conjointement dans le projet de barrage et pour une bonne collaboration pour le futur il est important que GAC comprenne bien les réalités des habitants du village. Ainsi donc le consultant mentionne que l’équipe va poser des questions pour bien comprendre l’historique, les activités socio-économiques et la gestion des terres par les habitants du village.

**Focus Group historique du village, système foncier et activités socio-économiques**

L’équipe effectue un rapide recensement du village avec l’aide d’un vieux qui connaît tous les ménages. Le village comporte 20 ménages. La population totale est de 142 individus.

Le village a été fondé il y a 37 ans. Les fondateurs du village étaient initialement installés plus au nord, dans le secteur situé entre le concasseur et le village de Parawi. Les fondateurs se sont déplacés vers le site actuel du village parce qu’il était plus attrayant, avec un accès à l’eau et de bonnes terres agricoles. Il y a 3 lignages fondateurs ; Diallo, Bah et Diallo. Un des

lignages Diallo était anciennement déjà dans la contrée, l'autre lignage Diallo et le lignage Bah viennent du Fouta. Un autre lignage s'est ensuite ajouté au village, lignage Bah originaire de Télimélé.

Les relations entre Sinthiourou Tiouladi et le village voisin de Parawi sont des relations de voisinage, cas sociaux, liens matrimoniaux et activités agricoles. Malgré tout le village de Parawi est plus ancestral que celui de Sinthiourou Tiouladi. Les premiers habitants de Sinthiourou Tiouladi se sont initialement installés sous la tutelle de Parawi. Le chef secteur insiste pour dire que maintenant les terres leur appartiennent entièrement. Ils peuvent planter des arbres, vendre la terre, cultiver ou bon leur semble sans demander de permission aux lignages de Parawi. Depuis récemment, en fait approximativement depuis l'arrivée de GAC dans la zone, le village de Sinthiourou Tiouladi a d'ailleurs vendu quelques parcelles de terres à des particuliers. Les acheteurs sont habituellement des gens qui veulent créer des plantations d'anacardier. Les acheteurs ont tous les droits requis pour exploiter la terre comme bon leur semble (planter des arbres etc.). Le village a vendu quelques parcelles de coteaux mais aucune parcelle de « Djolol ». Le djolol est la terre avec la plus grande valeur agricole et cette terre n'est pas à vendre. Les acheteurs viennent principalement de Mobhi et Parawi.

Il existe un système coutumier pour l'accès à la terre. Des étrangers ou des parents d'autres localités peuvent accéder à la terre sur le territoire de Sinthiourou Tiouladi en échange de quelques noix de colas et de la permission du lignage fondateur. Le droit obtenu ainsi est simplement un droit d'usage temporaire.

Les plantations d'anacardier sont un phénomène relativement nouveau sur le territoire de Sinthiourou Tiouladi (5 à 6 ans). Avant l'anacardier était considéré comme un arbre « néfaste », mais maintenant la population a constaté la rentabilité de ce type de plantation et c'est une activité qui prend de plus en plus d'importance. Certaines variétés d'anacardier peuvent donner jusqu'à 3 récoltes par année. Un anacardier pleinement mature peut donner 4 à 6 sacs de 50kg lors d'une récolte. Les récoltes sont vendues à des acheteurs chinois ou indiens. Le prix de vente varie de 10000GNF/kg à 15000/kg. L'entretien d'une plantation d'anacardier est très simple puisque ces arbres ne nécessitent pas beaucoup d'humidité.

Les principales activités socio-économiques du village sont des activités agricoles. La principale culture vivrière est le riz, qui est cultivé dans les djolols en association avec d'autres cultures (maïs, sorgho, gombo, haricot etc.). Ils pratiquent aussi le maraichage dans les tapades à l'intérieur des concessions. Les autres activités sont l'élevage de grand et de petits ruminants. La cueillette et l'extraction d'huile de palme, la chasse et la pêche, la cueillette de bois de chauffe et la production de charbon. La pêche est aussi une activité importante, pratiquée par les hommes et les femmes du village. La chasse est pratiquée dans une moindre mesure. Une partie de la production agricole est vendue pour financer l'achat de médicaments, les cérémonies, l'habillement, les soins, les projets de construction etc. Il y a une période d'insécurité alimentaire mois d'août, septembre.

GAC a mis en place différents projets pour la communauté de Sinthiourou Tiouladi au cours des dernières années. Notamment une clôture en fer pour protéger les cultures du bétail lors de la période d'attache. Aussi une maison des jeunes avec vidéoclub et panneau solaire et un forage. GAC fait aussi la pulvérisation dans les cours d'eau et différentes initiatives pour contrer le paludisme. Les agents de GAC relations communautaires ont aussi fait un diagnostic au village pour d'autres projets de développement communautaire ; lorsque consulté la population du village a mentionné la construction d'une route, la construction d'une école, d'un poste de santé et d'une mosquée.

Le poste de santé le plus près est celui de Tinguilinta (4hrs de marche). Les principaux problèmes de santé sont le paludisme et le rhume. L'état fait parfois des campagnes de vaccination.

Aucun des jeunes qui vivent au village ne fréquente l'école. Par contre certains des jeunes sont confiés à des membres de leurs familles qui vivent dans les centres urbains (Sangaredi, Tinguilinta) ce qui leur permet de suivre un cheminement scolaire. Approximativement 10 enfants du village suivent ainsi présentement un cursus scolaire.

Il y a plusieurs associations d'entraide agricole au village de Sinthiourou Tiouladi (association des planteurs, association des maraichers, groupement des femmes etc.) Toutes les femmes font aussi des tontines comme stratégies de petites épargnes.

### **Commentaires et question de la population**

Le chef secteur manifeste son inquiétude du fait que leurs zones de culture sont en aval du barrage, Est-ce qu'ils peuvent continuer à travailler en aval du barrage ? Est dangereux? Aussi est ce que le débit de la rivière sera modifié par la construction du barrage ? Cela risquerait d'affecter grandement leurs activités agricoles.

Le consultant mentionne qu'ils peuvent continuer à travailler la terre en aval du barrage. Toutes les études requises ont été effectuées pour permettre la construction d'un barrage moderne et selon les plus hauts standards actuels de la technologie et de la sécurité. Le risque de bris de barrage est extrêmement minime. Aussi selon les études, les conditions hydrologiques de la rivière en aval du barrage ne devraient pas être modifiées lors de la mise en exploitation du barrage. Les ingénieurs peuvent contrôler le débit de la rivière à partir du réservoir. Si les communautés locales observent des impacts négatifs sur l'écosystème aquatique suite à la construction du barrage, ils devront faire une plainte en utilisant le processus de plainte et le cas échéant toutes les mesures seront prises pour corriger la situation et compenser les populations si requis.

Le chef secteur demande la localisation du tracé du pipeline et demande si la route d'accès pourrait être utilisée par la communauté pour un accès plus rapide à Béli Kindy ?

Le consultant mentionne que la route passera à l'extérieur des limites du milieu bâti du village mais tout de même à proximité. Il faudra valider avec GAC de la possibilité que la population du village utilise la route puisqu'il s'agit d'une route d'entretien et il risque d'y avoir des dangers associés au trafic de camions et autres véhicules. Le consultant prend bonne note des demandes de la population et va discuter avec GAC de la possibilité d'autoriser l'accès à la route.

Un vieux prend la parole et remercie très sincèrement l'équipe pour la rencontre d'aujourd'hui qu'il a trouvée très pertinente. Il demande que GAC continue à s'impliquer et à travailler avec le village de Sinthiourou Tiouladi dans le futur.

No:	Description:	Quantité:	Observations :
<b>Compte Redue Produit Par : (Minutes produced by)</b>			
<b>Name :</b>	<b>Département :</b>	<b>Date :</b>	<b>Signature :</b>
PAQUET Olivier	RAP/REINSTALLATION	16/12/16	
<b>L'EQUIPE RAP ET LES CONSULTANTS A PARAWI DU 15 DECEMBRE 2016</b>			
Olivier Paquet	Consultant	n.a.	n.a.
Abdhouramane Sow			
Dialo			
Bailo			

**Quelques photos de la réunion**

## ANNEX 2 – REGISTER OF CONSULTATIONS

No. réf. Boréalis	Thèmes abordés ou activités	Date	Localisation	Description	Participants
C-01266	Consultation des communautés de la zone du barrage sur le processus de compensation, de remplacement de terres, d'indemnisation pour la perte de palmiers et les activités restauration des moyens d'existence	2/14/2017	Parawi, Sounthiourou Thiouladji, Mobhi	Echanger avec la communauté sur le processus de réinstallation/ compensation et sur le programme de restauration des moyens de subsistance : <ul style="list-style-type: none"> <li>• Présentation des nouveaux membres de l'équipe RAP</li> <li>• Compensation des palmiers communautaires impactés par les travaux du barrage et de la conduite d'eau ;</li> <li>• Présentation du programme de restauration des moyens de subsistance</li> <li>• Processus d'identification de domaine communautaire pour replanter les palmiers impactés</li> </ul>	122
C-00739	Signature de l'Entente Communautaire par les 3 villages pour le remplacement des palmiers naturels impactés au barrage (réalisation de 4 palmeraies)	5/4/2017	Parawi, Sounthiourou Thiouladji, Mobhi	Présentation et signature de l'Entente communautaire aux autorités locales de Sangarédi et des villages concernées par la réalisation des palmeraies de palmiers améliorés dans les villages de Parawi, Mobhi et Thiouladji.	43
C-00502	Mesurage à Parawi d'un domaine agricole pour le remplacement des palmiers naturels impactés au niveau du barrage	4/12/2017	Parawi, Sounthiourou Thiouladji, Mobhi	Délimiter et mesurer le domaine de remplacement des palmiers communautaires impactés au niveau du barrage	32
C-00958	Réception de 120 bottes de boutures de manioc Tokoumbo livrées par APEK - Agriculture	6/16/2017	Camp Pionner, Doubhi,	Réception de 120 bottes de manioc de variétés Tokoumbo livrées par APEK - Agriculture. Ces bottes sont destinées aux 4 Groupements de Palmeraies Communautaires des villages de Mobhi, Parawi et Shiounthourou Thiouladji - Diwé. Elles seront plantées comme cultures intercalaires pour la réalisation des palmeraies communautaires. Chaque Groupement aura 30 bottes de manioc.	47

No. réf. Boréalis	Thèmes abordés ou activités	Date	Localisation	Description	Participants
C-00479	Identification à Tian Alé d'un domaine agricole communautaire pour le remplacement des palmiers communautaires impactés au niveau du barrage	4/4/2017	Mobhi Kansihi (Village)	Accompagner le représentant de la communauté de Mobhi Mr Salia Bah dans l'identification du domaine communautaire pour remplacer les palmiers communautaires impactés au niveau du barrage.	2
C-00477	Consultation communautaire à Parawi pour le choix du site de remplacement des palmiers communautaires impactés au barrage	3/30/2017	Parawi	Rencontrer les communautés et les femmes bénéficiaires afin de discuter du mode de remplacement des palmiers communautaires impactés dans la zone du barrage et la réalisation d'une plantation communautaire. Les points inscrits à l'ordre du jour étaient les suivants: <ul style="list-style-type: none"> <li>• Mise à jour des activités du projet GAC</li> <li>• Processus de mise en œuvre des activités de restauration des moyens d'existence</li> <li>• Diffusion des messages clés et épreuve de questions réponses</li> <li>• Identification du site de remplacement des palmiers communautaire</li> </ul>	28
C-01256	Présentation des encadreurs agricoles aux Groupements de Palmeraies Communautaires et aux autorités villageoises	7/24/2017	Mobhy Kansihy, Sounthiourou Thiouladji et Parawi	Les 3 encadreurs agricoles en charge du suivi de l'aménagement des palmeraies et placés sous la supervision de l'agronome de GAC ont été présentés aux Groupements et aux chefs secteurs des villages de Mobhi Kanshi, Sounthiourou Thiouladji et Parawi. Un accès particulier a été mis sur la bonne collaboration afin de mener à bien les travaux.	22
C-01253	Démarrage des travaux de Mensuration et de Piquetage dans les palmeraies communautaires	7/25/2017	Mobhy Kansihy, Sounthiourou Thiouladji et Parawi	Avec le soutien des encadreurs agricoles et la supervision de l'agronome de GAC, assurer le démarrage des travaux de réalisation des palmeraies communautaires par la mensuration et le piquetage. Les domaines sont les suivants: <ol style="list-style-type: none"> <li>1- Mobhi (Mobhi Centre, Djolol Kouradji)</li> <li>2- Parawi (Didere Nora)</li> </ol>	1

No. réf. Boréalis	Thèmes abordés ou activités	Date	Localisation	Description	Participants
				3- Sounthiourou Thiouladji (Thiankoun Mama)	
C-01248	Mise à disposition des EPI et Matériels Agricoles aux Groupements de Palmeraie Communautaire de Mobhi, Parawi et Thiouladji	7/24/2017	Parawi, Sounthiourou Thiouladji, Mobhi	Mettre les Equipements matériels agricoles à la disposition des 3 Groupements de Palmeraies Communautaires dans les villages de Mobhi, Parawi et Sounthiourou Thiouladji.	37
C-01162	Suivi du défrichement des domaines de plantation de Parawi, Sounthiourou Thiouladji, Mobhi	7/13/2017	Parawi, Sounthiourou Thiouladji, Mobhi	Echanger avec le chef secteur de Sounthiourou Thiouladji sur le consensus trouvé qui selon lui a connu la présence des propriétaires coutumiers et toutes les parties concernées se sont mis d'accord sur ce nouveau site dénommé Thiankoun Mama <ul style="list-style-type: none"> <li>• Rendre visite aux ouvriers et faire une reconnaissance du site</li> <li>• Prodiguer des conseils en matière de santé et de sécurité dans le cadre de ce travail avec le principe de zéro blessure</li> </ul>	40
C-01160	Prise de contact avec BECOP au sujet du processus de recrutement des 3 encadreurs agricoles	7/11/2017	Sangaredi	Echanger sur les contenus du bon de commande définissant les services demandés à BECOP à savoir le paiement des 3 encadreurs agricoles pendant 3 mois. Ils seront postés à Mobhi Centre, Djolol Kouradje et Parawi.	3
C-01161	Présentation des candidats aux postes d'encadreurs agricoles à BECOP pour les visites médicales	7/12/2017	Tinguilinta	Mettre en contact les différents candidats au bureau BECOP pour les examens médicaux	5
C-01127	Assemblée Générale Constitutive du Groupement de Palmeraie Communautaire de Parawi	7/10/2017	Parawi	<ul style="list-style-type: none"> <li>• Présentation et validation des statuts et règlement intérieur du Groupement</li> <li>• Présentation des rôles et responsabilités des membres du Bureau Exécutif</li> <li>• Election des membres du BE</li> <li>• Choix des membres du comité de contrôle</li> <li>• Choix des signataires du compte bancaire</li> </ul>	40

No. réf. Boréalais	Thèmes abordés ou activités	Date	Localisation	Description	Participants
				<ul style="list-style-type: none"> <li>Informations générales sur les activités de plantation</li> </ul>	
C-01093	Poursuite des négociations avec les coutumiers de Mobhi et de Parawi pour l'octroi du domaine de plantation à Thiouladji et à Diwé	7/6/2017	Mobhy Kansihy, Parawi	<ul style="list-style-type: none"> <li>Prendre contact avec le représentant de la famille Bah de Mobhi, propriétaire coutumier des domaines de Thiouladji</li> <li>Relancer les discussions en vue d'aboutir à une entente permettant à la famille Bah de céder un domaine pour la réalisation des palmeraies communautaires en faveur des communautés de SounthiourouThiouladji et de Diwé</li> <li>Garder les méthodes traditionnelles d'acquisition des terres par les communautés riveraines et ne pas s'engager dans la notion d'achat des terres par GAC car GAC n'achète pas la terre</li> </ul>	4
C-01121	Délimitation du domaine de Thiankoun Mama pour la réalisation de la palmeraie communautaire à Thiouladji et à Diwé	7/10/2017	Sinthiourou Tiouladi,	<p>Suite au résultat obtenu lors de la négociation avec le coutumier Mr Salia Bah, nous avons procédé comme suit:</p> <ul style="list-style-type: none"> <li>Visite du site retenue</li> <li>Délimitation du domaine</li> <li>Organisation du travail pour le défrichage de la zone</li> </ul>	3
C-01094	Information pour la tenue de l'AG du Groupement de Palmeraie Communautaire de Parawi	7/7/2017	Parawi,	Prendre contact avec le représentant des femmes de Parawi et le doyen de la localité afin de s'excuser pour le rendez-vous manqué du jeudi prévue pour la tenue de l'assemblée générale de mise en place du Groupement de Palmeraie Communautaire de Parawi	2
C-01090	Assemblée Générale Constitutive du Groupement de Palmeraie Communautaire de Mobhi	7/5/2017	Mobhy Kansihy,	<ul style="list-style-type: none"> <li>Présentation et validation des statuts et règlement intérieur du Groupement</li> <li>Présentation des rôles et responsabilités des membres du Bureau Exécutif</li> <li>Election des membres du Bureau Exécutif</li> <li>Choix des membres du comité de contrôle</li> <li>Choix des signataires du compte bancaire</li> </ul>	72

No. réf. Boréalis	Thèmes abordés ou activités	Date	Localisation	Description	Participants
				<ul style="list-style-type: none"> <li>Informations générales sur les activités de plantation</li> </ul>	
C-00997	Distribution des bottes de manioc et identification du domaine de la palmeraie communautaire de Thiouladji et Diwè	6/19/2017	Sinthiourou Thiouladi, Parawi, Mobhi	<p>La visite de l'équipe a Sinthiourou Thiouladji a permis de rencontrer le Chef secteur ainsi les représentants des familles Kanté, Cissé et deux (2) autres personnes. Cette visite portait sur l'acquisition d'un domaine cultivable qui servira aux groupements de femmes Sinthiourou et de Diwè à planter du manioc. Le domaine obtenu est une brousse vieille de cinq (5) ans avec des grands buissons qu'il faut défricher. Pour ça, une liste de 10 personnes a été dressée à savoir 5 par village pour le nettoyage. Aussi, un autre domaine a été choisi par eux à Sinthiourou qui servira cette année à planter les bottes de manioc.</p> <p>Une réunion a été planifiée pour le lendemain à 9h à Sinthiourou Thiouladji pour rencontrer les recrues dans le cadre du défrichage ainsi que les femmes constituées en groupement afin de leur livrer les bottes de manioc. La communauté a vivement remercié le projet GAC.</p>	13
C-00996	Suivi du planting de 120 bottes de manioc par les 4 Groupements de Palmeraies Communautaires	6/19/2017	Parawi,	<p>Suivre la distribution de 120 boutures de manioc de variétés Tokoumbo dont le rendement est estimé entre 10 et 15 tonnes à l'hectare destinées aux 3 Groupements de Palmeraies Communautaires des villages de Mobhi, Parawi et Shionthourou Thiouladji - Diwé). Elles seront plantées comme cultures intercalaires sur environ 10ha afin de lutter contre l'enherbement dans les palmeraies communautaires pour la première année de plantation. La culture de manioc va contribuer à la restauration et à la pérennisation des moyens d'existence des populations impactées par la construction du barrage. Les produits de la</p>	15

No. réf. Boréalais	Thèmes abordés ou activités	Date	Localisation	Description	Participants
				récolte et les revenus générés par la culture de manioc reviendront entièrement aux Groupements mis en place à cet effet. Les membres des Groupements bénéficieront des sessions de formation en nouvelles techniques agricoles adoptées à cette variété Tokoumbo dont les boutures vont désormais restés dans la zone pour les campagnes futures.	
C-00995	Distribution des bottes de manioc et paiement des ouvriers	6/17/2017	Mobhy centre et Djolol Kouradji	Le samedi 17/06/2017, on a procédé à la distribution des bottes de manioc dans les villages de Mobhi et de Djolol Kouradji. A Mobhi, la présidente du groupement de palmeraie communautaire a favorablement accueilli la qualité et la quantité des bottes de manioc. Elle dit que comparativement aux années précédentes, jamais elle et tous les autres membres n'avaient reçu pareilles quantité et qualité, propos confirmés par le Chef secteur de Mobhi Kansihi. Elle a été suffisamment informée sur les conditions liées à l'utilisation de ces bottes. Les bénéficiaires se sont engagés comme quoi ces bottes de manioc seront utilisées à bon escient.	26
C-00985	Distribution et suivi du planting de Manioc variétés Tokoumbo	6/17/2017	Parawi, Mobhi, Thiouladji	Ces 120 bottes de manioc de variétés Tokoumbo dont le rendement est estimé entre 10 et 15 tonnes à l'hectare sont destinées aux 4 Groupements de Palmeraies Communautaires des villages de Mobhi, Parawi et Shiounthourou Thiouladji - Diwé (130 membres). Elles seront plantées comme cultures intermédiaires sur environ 10ha afin de lutter contre l'enherbement dans les palmeraies communautaires pour la première année de plantation. Chaque Groupement aura 30 bottes de manioc.	33
C-00962	Visite de terrain dans le cadre du futur programme de polyculture +	6/16/2017	Tian Alé, Parawi,	Cette visite mixte RME et Développement Communautaire s'inscrit dans le cadre de la mise en place d'un future programme	3

No. réf. Boréalis	Thèmes abordés ou activités	Date	Localisation	Description	Participants
	Elevage à PételKiendi			de polyculture et élevage sur le domaine agricole de Pétel Kiendi. Pétel Kiendi est un domaine à haute potentialité agricole environ 70ha composé de plaine de jachère et de basfond humide par endroit. Ancien FAPA, entre 2011 et 2012 Pétel Kiendi avait été exploité pour la riziculture par le Groupement des Agriculteurs de Bowé sis à Sangarédi, qui avait obtenu un acte de cession pour un prêt de 10 ans delivé par la famille de feu Mama Ng'oro Touré du village de Filow Bowal Mangodjé. Depuis cette date ce domaine est abandonné à elle-même et la jachère a repris.	
C-00952	Information village pour la mise en place des GPC et la réception des boutures de manioc et opération de planting du manioc à Parawi, Mobhi, Djolol Kouradjé	6/13/2017	Parawi, Mobhi, Thiouladji	Informers les leaders des groupes de femmes et les responsables locaux de la mise en place du GPC (Groupement de Palmeraie Communautaire) dont 1 par village ayant la responsabilité de gérer les plantations de palmeraies communautaires. Il s'agit également de recevoir les boutures de manioc et organiser les opérations de distribution et de planting	13
C-00839	Suivi des activités de défrichement des domaines de plantations à Mobhi et à Parawi	5/30/2017	Mobhi et Parawi	Faire une visite des différents domaines de réalisation des plantations communautaires afin de s'imprégner du niveau d'avancement des travaux de défrichement. Les domaines se trouvent dans les localités suivantes: <ul style="list-style-type: none"> <li>• Mobhi : DjololKouradjé</li> <li>• Parawi : Didère Nora</li> </ul>	20
C-00777	Lancement des travaux de défrichement des domaines de plantation à Mobhi et à Parawi	5/19/2017	Parawi, et Mobhi	Informers les responsables locaux et les groupements du démarrage la semaine prochaine des activités de défrichement des domaines pour la réalisation des palmeraies communautaires. Annoncer l'engagement de 10 personnes pour la main d'œuvre afin de défricher les domaines pendant 5 jours. Dépôt de la liste des personnes	22

No. réf. Boréal	Thèmes abordés ou activités	Date	Localisation	Description	Participants
				plutard lundi et le début du suivi des activités à partir du mardi.	
C-00707	Identification des Activités Génératrices de Revenus(AGR) des femmes de Mobhi	5/12/2017	Mobhy	<ul style="list-style-type: none"> <li>Finaliser la liste des femmes du village</li> <li>Identification des AGR</li> </ul>	35
C-00633	Rencontre avec les sages et les groupements de femmes de MobhiKansihi pour la réalisation des palmeraies communautaires	5/4/2017	Mobhy Kansihi,	Prises de contact avec les sages et les membres des groupements de femmes de Mobhi Kansihi afin de les présenter les résultats de l'identification des domaines de réalisation des plantations de palmiers. Il s'agit également de valider le site de Djolol Kouradjé près de Tian Alé et expliquer le contenu de la lettre d'entente communautaire.	17